

PROJECT REFERENCE NO.	SHEET NO.
R-2915A	EC-10/CONST.10
RW SHEET NO.	
ROADWAY DESIGN ENGINEER	HYDRAULICS ENGINEER

CLEARING AND GRUBBING
EROSION CONTROL FOR
CONSTRUCTION SHEET 10

-L- HORIZONTAL CURVE DATA

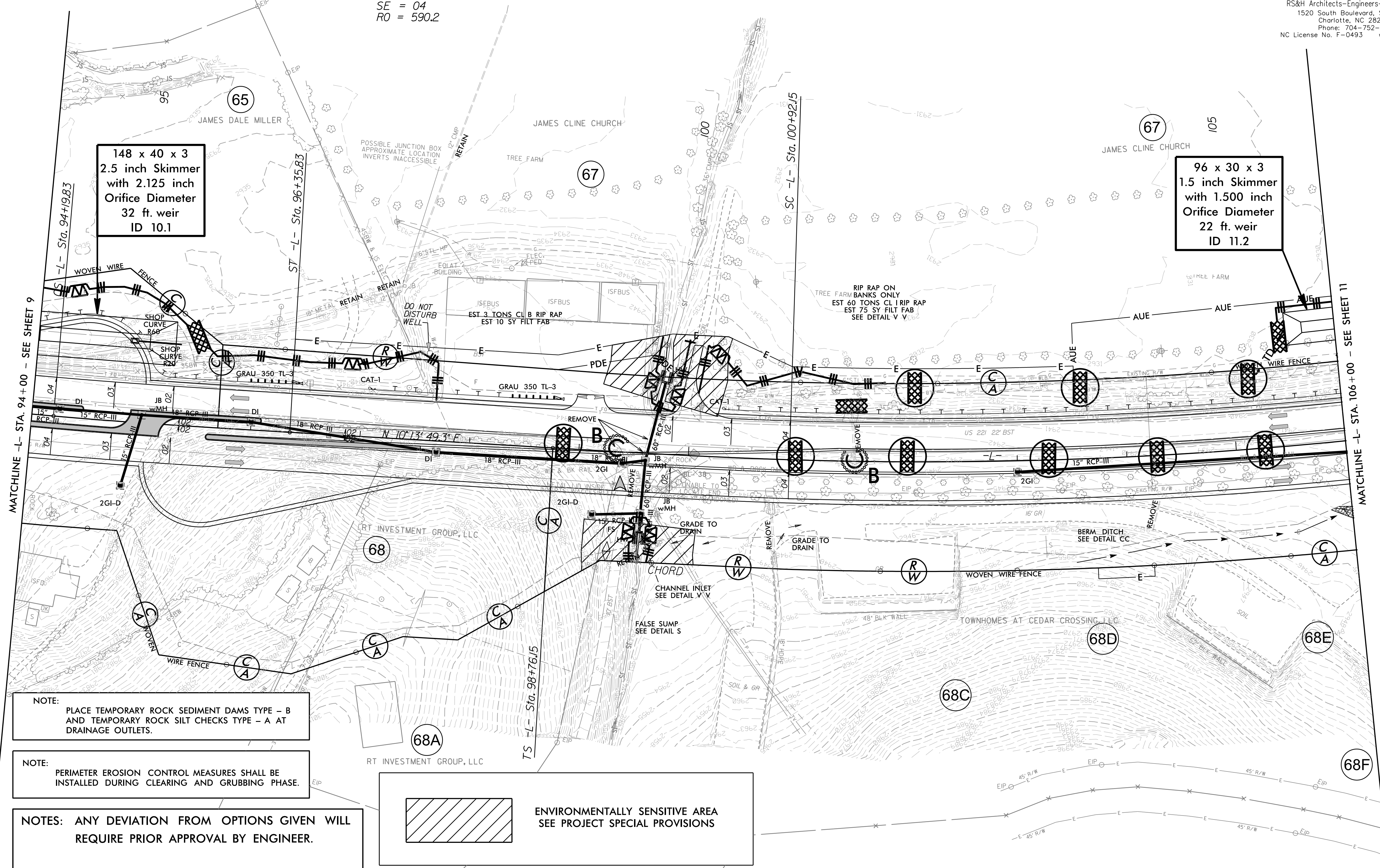
Pls Sta 81+73.03 Os = 1° 37' 26.9" Ls = 216.00' LT = 144.01' ST = 72.01'	Pls Sta 88+37.13 Δ = 17° 40' 01.4" (LT) D = 1° 30' 13.8" L = 1,174.81' T = 592.10' R = 3,810.00' SE = 04 RO = 1174.8	Pls Sta 94+91.84 Os = 1° 37' 26.9" Ls = 216.00' LT = 144.01' ST = 72.01'
--	---	--

Pls Sta 100+20.16 Os = 1° 35' 48.8" Ls = 216.00' LT = 144.01' ST = 72.01'	Pls Sta 103+87.82 Δ = 8° 43' 36.2" (LT) D = 1° 28' 43.0" L = 590.20' T = 295.67' R = 3,875.00' SE = 04 RO = 590.2	Pls Sta 107+54.36 Os = 1° 35' 48.8" Ls = 216.00' LT = 144.01' ST = 72.01'
---	--	---

NAD 83 CORS

RS&H
IMPROVING YOUR WORLD
© 2012 REYNOLDS, SMITH AND HILLS, INC.
RS&H Architects-Engineers-Planners, Inc.
1520 South Boulevard, Suite 200
Charlotte, NC 28203
Phone: 704-752-0610
99-971-9655 www.rsandh.com
NC License No. F-0493

V&M
Consulting Engineers
Asheville, NC
Norfolk, VA
Chapel Hill, NC
Durham, NC
Raleigh, NC
Wilmington, NC
Greensboro, NC
Charlotte, NC
Fayetteville, NC
Winston-Salem, NC
Renoir, NC
Spartanburg, SC
Clemson, SC
Columbia, SC
Mooresville, NC
Aronia, GA
770-427-3509
Copyright © 2006 Vaughn & Martin, Inc. All Rights Reserved.



NOTE:
PLACE TEMPORARY ROCK SEDIMENT DAMS TYPE - B
AND TEMPORARY ROCK SILT CHECKS TYPE - A AT
DRAINAGE OUTLETS.

NOTE:
PERIMETER EROSION CONTROL MEASURES SHALL BE
INSTALLED DURING CLEARING AND GRUBBING PHASE.

NOTES: ANY DEVIATION FROM OPTIONS GIVEN WILL
REQUIRE PRIOR APPROVAL BY ENGINEER.

ADDITIONAL EROSION CONTROL DEVICES MAY
NEED TO BE INSTALLED AS DIRECTED BY THE
ENGINEER.

 ENVIRONMENTALLY SENSITIVE AREA
SEE PROJECT SPECIAL PROVISIONS

INSTALL PIPE(S) IN JURISDICTIONAL AREAS WITHOUT IMPACTING STREAM UNTIL
AREA STABILIZED AND ACCORDING TO NCDOT BEST MANAGEMENT
PRACTICES FOR CONSTRUCTION AND MAINTENANCE ACTIVITIES MANUAL.

SEE SHEET 26 FOR -L- PROFILE

\$DATE\$