

CLEARING AND GRUBBING
EROSION CONTROL FOR
CONSTRUCTION SHEET 07

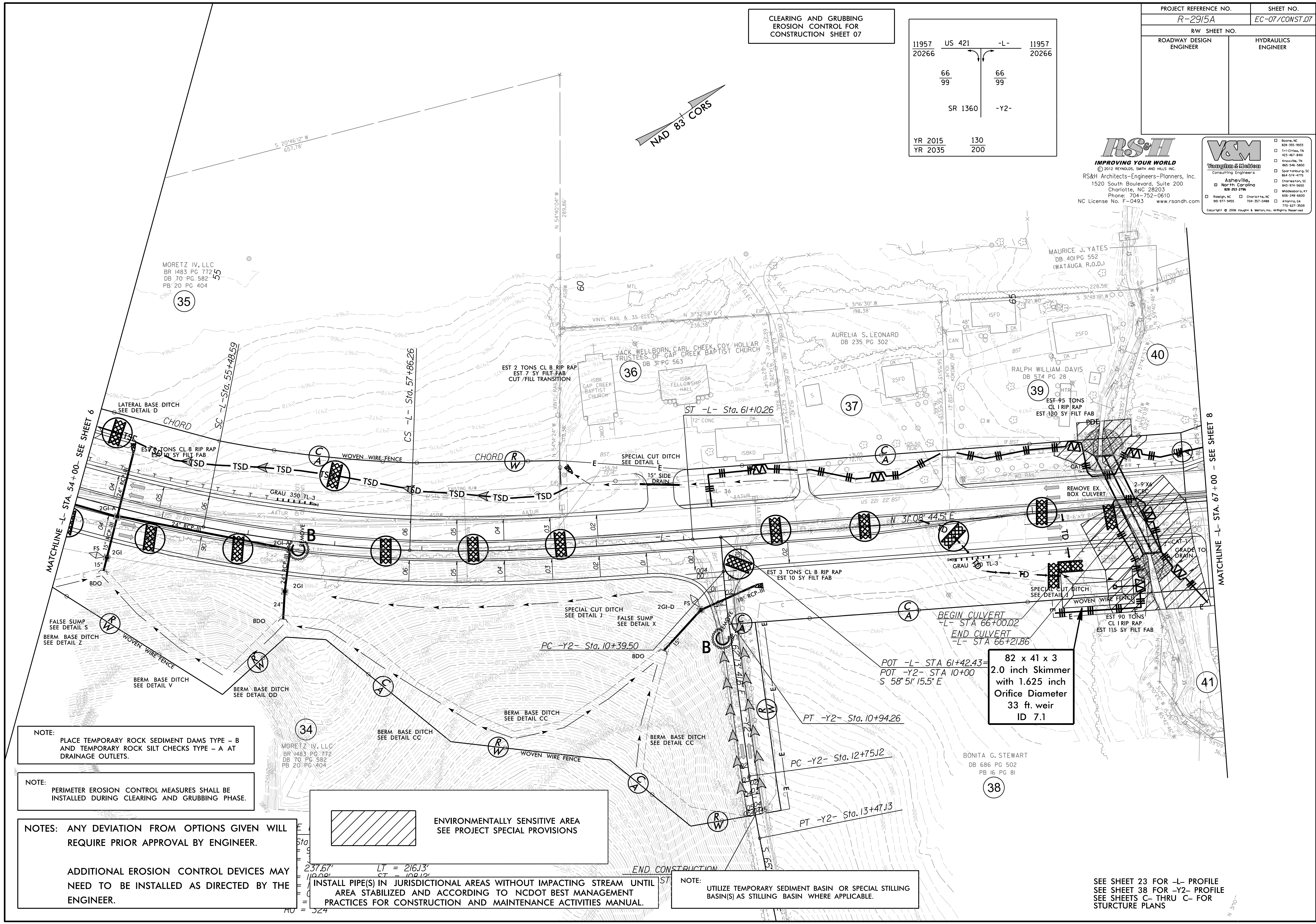
11957 20266	US 421	-L-	11957 20266
66 99			66 99
	SR 1360	-Y2-	
YR 2015	130		
YR 2035	200		

PROJECT REFERENCE NO. R-2915A	SHEET NO. EC-07/CONST.07
RW SHEET NO.	
ROADWAY DESIGN ENGINEER	HYDRAULICS ENGINEER

RS&H
IMPROVING YOUR WORLD
© 2012 REYNOLDS, SMITH AND HILLS INC.
RS&H Architects-Engineers-Planners, Inc.
1520 South Boulevard, Suite 200
Charlotte, NC 28203
Phone: 704-752-0610
NC License No. F-0493 www.rsandh.com

V&M
Consulting Engineers
Asheville, NC
828-253-2796

Boone, NC 828-355-9933
Tri-City, TN 423-467-8800
Knoxville, TN 865-546-5800
Spartanburg, SC 864-514-4775
Chapel Hill, NC 919-971-9600
Winston-Salem, NC 703-381-6600
Charlotte, NC 704-307-0488
Atlanta, GA 770-627-3509
Copyright © 2006 Vought & Mendenhall, All Rights Reserved.

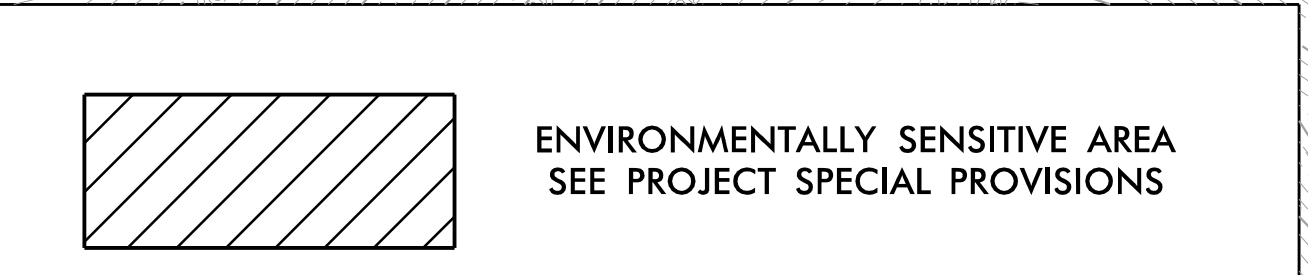


NOTE:
PLACE TEMPORARY ROCK SEDIMENT DAMS TYPE - B
AND TEMPORARY ROCK SILT CHECKS TYPE - A AT
DRAINAGE OUTLETS.

NOTE:
PERIMETER EROSION CONTROL MEASURES SHALL BE
INSTALLED DURING CLEARING AND GRUBBING PHASE.

NOTES: ANY DEVIATION FROM OPTIONS GIVEN WILL
REQUIRE PRIOR APPROVAL BY ENGINEER.

ADDITIONAL EROSION CONTROL DEVICES MAY
NEED TO BE INSTALLED AS DIRECTED BY THE
ENGINEER.



INSTALL PIPE(S) IN JURISDICTIONAL AREAS WITHOUT IMPACTING STREAM UNTIL
AREA STABILIZED AND ACCORDING TO NCDOT BEST MANAGEMENT
PRACTICES FOR CONSTRUCTION AND MAINTENANCE ACTIVITIES MANUAL.

NOTE:
UTILIZE TEMPORARY SEDIMENT BASIN OR SPECIAL STILLING
BASIN(S) AS STILLING BASIN WHERE APPLICABLE.

82 x 41 x 3
2.0 inch Skimmer
with 1.625 inch
Orifice Diameter
33 ft. weir
ID 7.1

SEE SHEET 23 FOR -L- PROFILE
SEE SHEET 38 FOR -Y2- PROFILE
SEE SHEETS C- THRU C- FOR
STRUCTURE PLANS

\$DATE\$

\$FILE\$