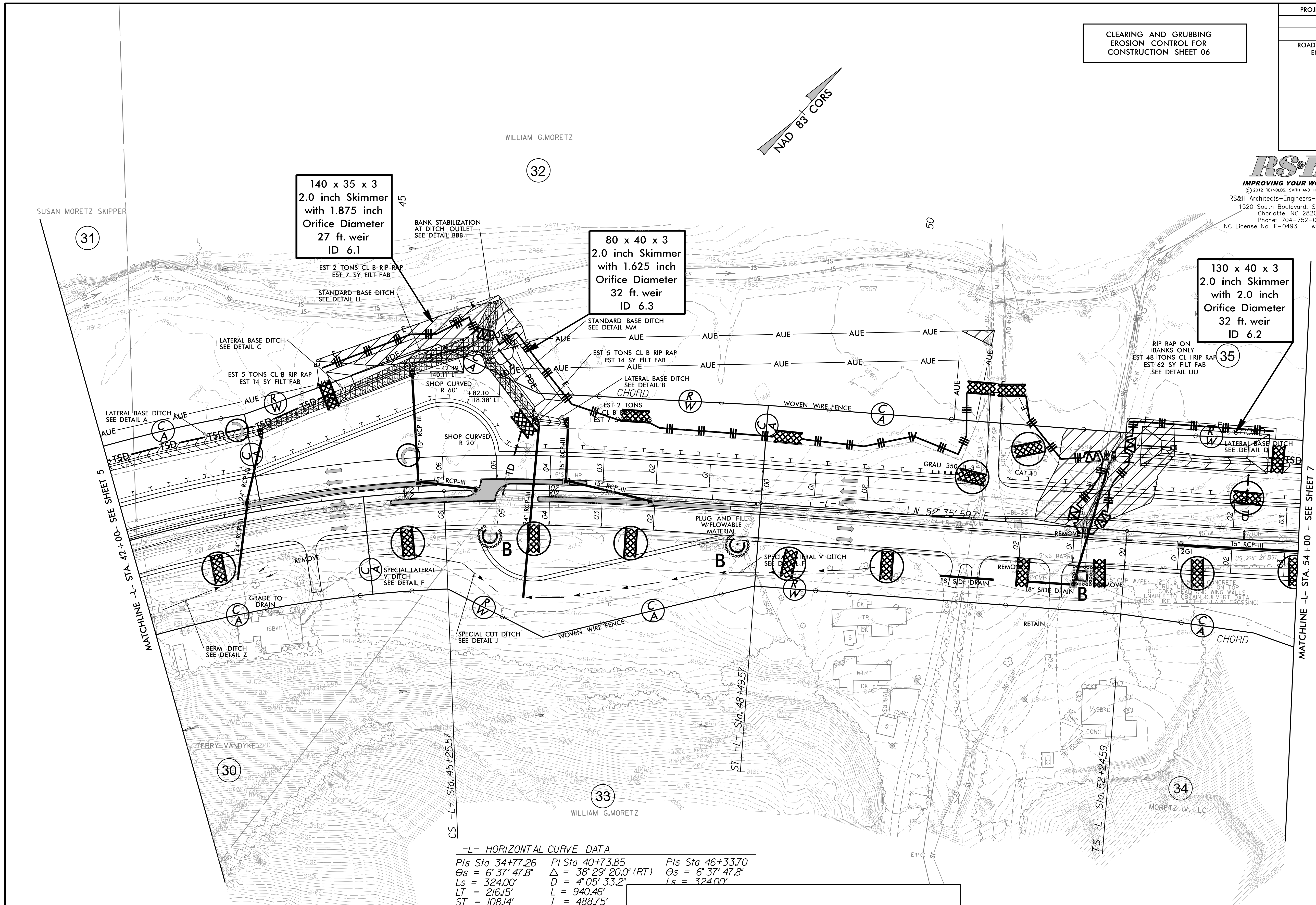


CLEARING AND GRUBBING
EROSION CONTROL FOR
CONSTRUCTION SHEET 06

RS&H
IMPROVING YOUR WORLD
© 2012 REYNOLDS, SMITH AND HILLS INC.
RS&H Architects-Engineers-Planners, Inc.
1520 South Boulevard, Suite 200
Charlotte, NC 28203
Phone: 704-752-0610
NC License No. F-0493 www.rsandh.com

V&M
Vannoy & McMillan
Consulting Engineers
Asheville, NC
North Carolina
828-253-2796

Charlotte, NC
North Carolina
Tri-Cities, TN
Tennessee
Knoxville, TN
Knoxville, TN
Middleboro, MA
Kentwood, MI
Spartanburg, SC
South Carolina
484-334-0713



-L- HORIZONTAL CURVE DATA

PIs Sta 34+77.26	PI Sta 40+73.85	PIs Sta 46+33.70
Os = 6° 37' 47.8"	Δ = 38° 29' 20.0" (RT)	Os = 6° 37' 47.8"
Ls = 324.00'	D = 4° 05' 33.2"	Ls = 324.00'
LT = 216.15'	L = 940.46'	
ST = 108.14'	T = 488.75'	
	R = 1,400.00'	
	SF = .06	

NOTES: ANY DEVIATION FROM OPTIONS GIVEN WILL REQUIRE PRIOR APPROVAL BY ENGINEER.

ADDITIONAL EROSION CONTROL DEVICES MAY NEED TO BE INSTALLED AS DIRECTED BY THE ENGINEER.

NOTE: PLACE TEMPORARY ROCK SEDIMENT DAMS TYPE - B AND TEMPORARY ROCK SILT CHECKS TYPE - A AT DRAINAGE OUTLETS.

NOTE: PERIMETER EROSION CONTROL MEASURES SHALL BE INSTALLED DURING CLEARING AND GRUBBING PHASE.

 ENVIRONMENTALLY SENSITIVE AREA SEE PROJECT SPECIAL PROVISIONS

INSTALL PIPE(S) IN JURISDICTIONAL AREAS WITHOUT IMPACTING STREAM UNTIL AREA STABILIZED AND ACCORDING TO NCDOT BEST MANAGEMENT PRACTICES FOR CONSTRUCTION AND MAINTENANCE ACTIVITIES MANUAL.