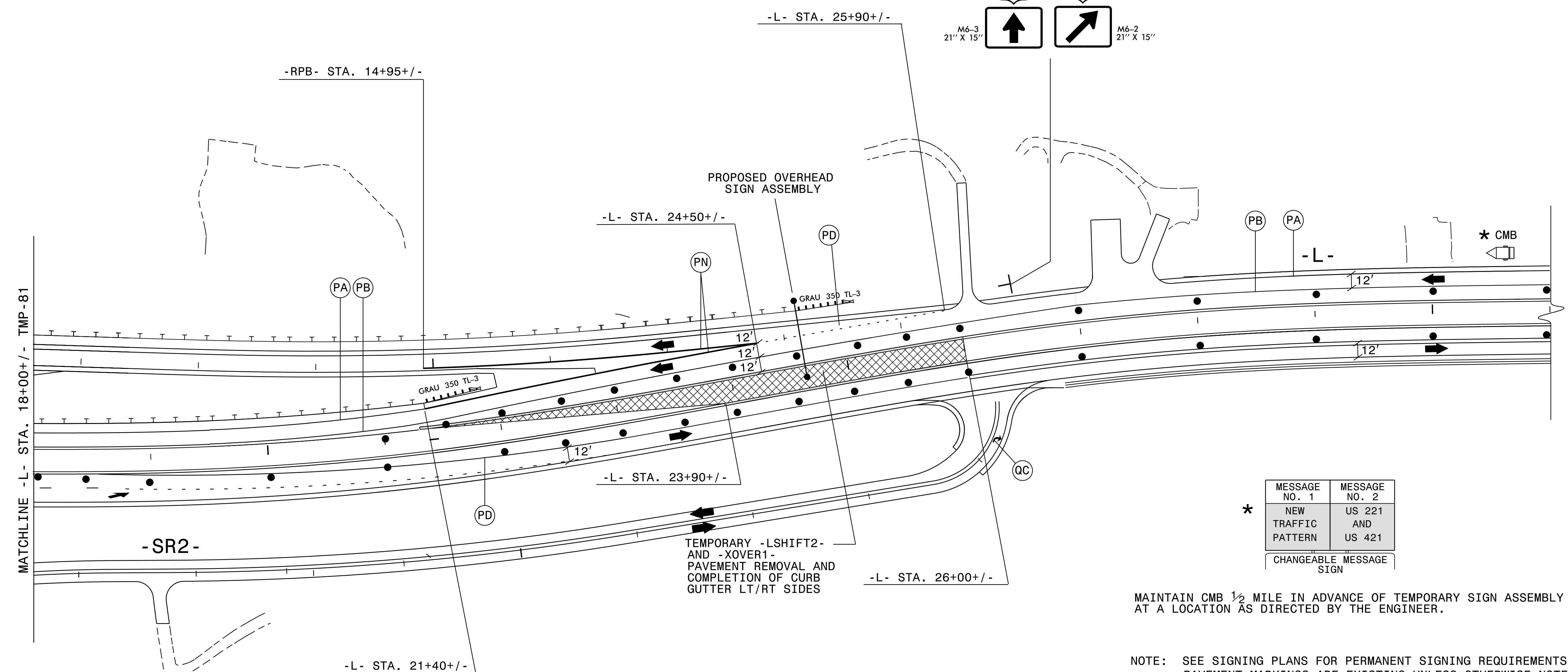
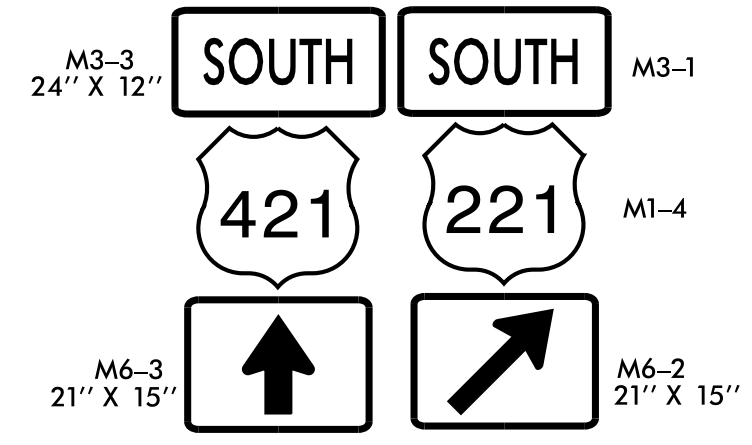




20

25

30



MESSAGE NO. 1	MESSAGE NO. 2
NEW TRAFFIC PATTERN	US 221 AND US 421
CHANGEABLE MESSAGE SIGN	

\* MAINTAIN CMB 1/2 MILE IN ADVANCE OF TEMPORARY SIGN ASSEMBLY AT A LOCATION AS DIRECTED BY THE ENGINEER.

NOTE: SEE SIGNING PLANS FOR PERMANENT SIGNING REQUIREMENTS. PAVEMENT MARKINGS ARE EXISTING UNLESS OTHERWISE NOTED. SEE TMP-1A FOR TEMPORARY PAVEMENT MARKING SCHEDULE.

(DENOTES PAVEMENT REMOVAL)

5/20/2015 9:01:42 AM P:\2012\NR-2915A\TrafficControl\TCP\NR2915A\_TC\_TCP\_PSH\_82.dgn

559 Jones Franklin Rd. Suite 164  
 Raleigh, N.C. 27606  
 License No. F-6377  
 Bus: 919 851 8077  
 Fax: 919 851 8107

TRANSPORTATION PLANNING/DESIGN - BRIDGE/STRUCTURE DESIGN  
 CIVIL/SITE DESIGN - GIS/GPS - CONSTRUCTION OBSERVATION

APPROVED: \_\_\_\_\_ DATE: \_\_\_\_\_

DIVISION OF HIGHWAYS  
 STATE OF NORTH CAROLINA  
 DEPARTMENT OF TRANSPORTATION  
 WORK ZONE TRAFFIC CONTROL

PHASE V  
 TEMPORARY TRAFFIC CONTROL DETAIL