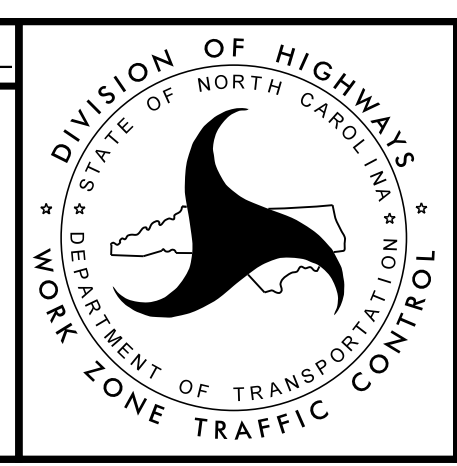
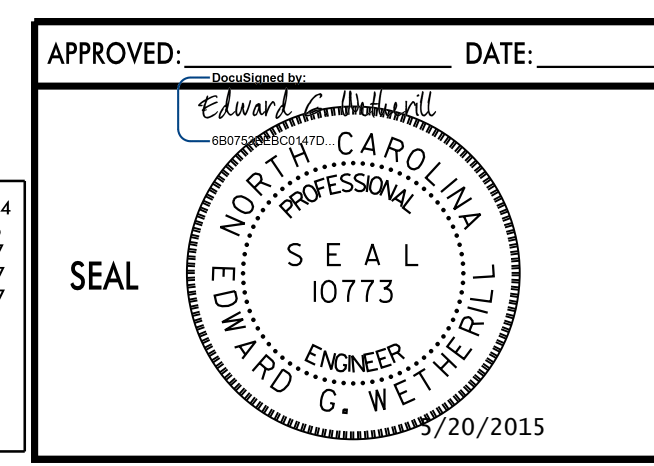
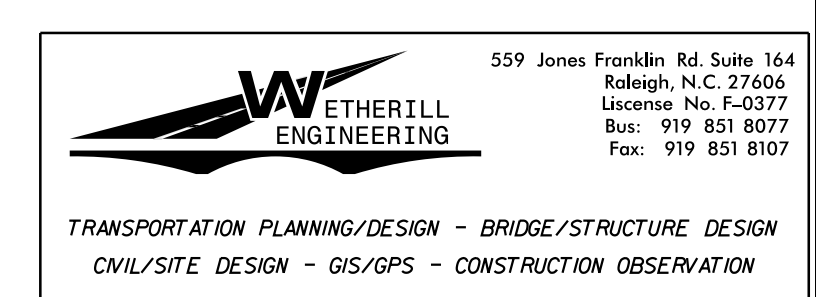


MESSAGE NO. 1	MESSAGE NO. 2
NEW TRAFFIC PATTERN	US 221 AND US 421
CHANGEABLE MESSAGE SIGN	

INSTALL CMB 1/2 MILE IN ADVANCE OF TEMPORARY SIGN ASSEMBLY AT A LOCATION AS DIRECTED BY THE ENGINEER.

NOTE: SEE ROADWAY PLANS FOR TEMPORARY ALIGNMENT ON -LSHIFT2-.
SEE TMP-1A FOR TEMPORARY PAVEMENT MARKING SCHEDULE.
PAVEMENT MARKINGS SHOWN ARE EXISTING UNLESS OTHERWISE NOTED.



**PHASE IV
TEMPORARY TRAFFIC
CONTROL DETAIL**

5/20/2015 8:55:42 AM P:\2012\2915A\TrafficControl\TCP\2915A_TC_TCP_PSH_72.dgn