

PHASE III (PART C)

STEP 1) USING ROADWAY STANDARD DRAWING NO. 1101.02, SHEET 3 OF 15, REMOVE US 421 NB/SB MEDIAN PORTABLE CONCRETE BARRIER AND CRASH CUSHIONS AND REPLACE WITH DRUMS AS FOLLOWS:

- -Y1- (US 421) SB MEDIAN FROM -Y1- STA. 12+22+/- TO STA. 32+16+/- (SEE TMP-61 THRU TMP-63).
- -Y1- (US 421) SB MEDIAN FROM -Y1- STA. 34+65+/- TO STA. 52+10+/- (SEE TMP-63 THRU TMP-65).
- -Y1- (US 421) NB FROM -Y1- STA. 33+00+/- TO STA. 52+10+/- (SEE TMP-43, AND TMP-58 AND TMP-59).

STEP 2) WORK IN A CONTINUOUS MANNER TO COMPLETE THE FOLLOWING:

A. ADJUST TEMPORARY SIGNING ON US 421 SB FOR TEMPORARY SHIFTED TWO-LANE, ONE-WAY TRAFFIC PATTERN.

- USING LAW ENFORCEMENT, MODIFY THE US 421/US 221 INTERSECTION TRAFFIC SIGNAL.
- USING ROADWAY STANDARD DRAWING NO. 1101.02, SHEET 3 OF 15, REMOVE CONFLICTING MARKINGS ON US 421 SB AND PLACE MARKINGS AND MARKERS FOR THE TEMPORARY SHIFTED MEDIAN TRAFFIC PATTERN (SEE TMP-61 THRU TMP-65).

B. SHIFT US 421 SB TRAFFIC TO THE TEMPORARY TWO-LANE, ONE-WAY SHIFTED PATTERN AND COMPLETE PLACEMENT OF REMAINING PAVEMENT MARKINGS AND MARKERS.

C. USING ROADWAY STANDARD DRAWING NO. 1101.02, SHEET 3 OF 15, REMOVE CONFLICTING MARKINGS ON US 421 NB AND PLACE MARKINGS AND MARKERS FOR THE TEMPORARY SHIFTED MEDIAN TRAFFIC PATTERN (SEE TMP-61 THRU TMP-65).

D. SHIFT US 421 NB TRAFFIC TO THE TEMPORARY TWO-LANE, ONE-WAY SHIFTED PATTERN AND COMPLETE PLACEMENT OF REMAINING PAVEMENT MARKINGS AND MARKERS.

STEP 3) USING ROADWAY STANDARD DRAWING NO. 1101.02, SHEET 3 OF 15, RESET PORTABLE CONCRETE AND TEMPORARY CRASH CUSHIONS AS NECESSARY FOR PROPOSED -LPC-/-RPC- TIE-IN CONSTRUCTION ALONG US 421 SB AND FOR PROPOSED -RPA-TIE-IN CONSTRUCTION ALONG US 421 NB AS FOLLOWS:

- -Y1- SB STA. 12+32+/- TO STA. 41+00+/- (SEE TMP-61 THRU TMP-64).
- -Y1- NB STA. 34+75+/- TO STA. 43+95+/- (SEE TMP-63 AND TMP-64).

STEP 4) COMPLETE THE FOLLOWING UP TO, BUT NOT INCLUDING, THE FINAL LAYER OF SURFACE COURSE:

- -LPC-/-RPC- AND -RPA- TIE-INS (SEE TMP-62 THRU TMP-64).
- -Y1- SB OUTSIDE SHOULDER STA. 12+22+/- TO STA. 54+00+/- (SEE TMP-61 AND TMP-65).
- -Y1- NB OUTSIDE SHOULDER STA. 37+00+/- TO STA. 54+00+/- (SEE TMP-64 AND TMP-65).

STEP 5) USING ROADWAY STANDARD DRAWING NO. 1101.02, SHEET 3 OF 15, REMOVE US 421 SB PORTABLE CONCRETE BARRIER AND TEMPORARY CRASH CUSHIONS (INSTALLED IN PHASE III, STEP 3) AND REPLACE WITH DRUMS AS FOLLOWS. INSTALL TYPE III BARRICADES TO CLOSE OFF -RPC TO TRAFFIC:

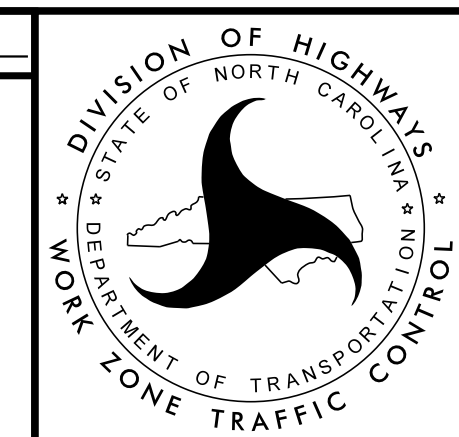
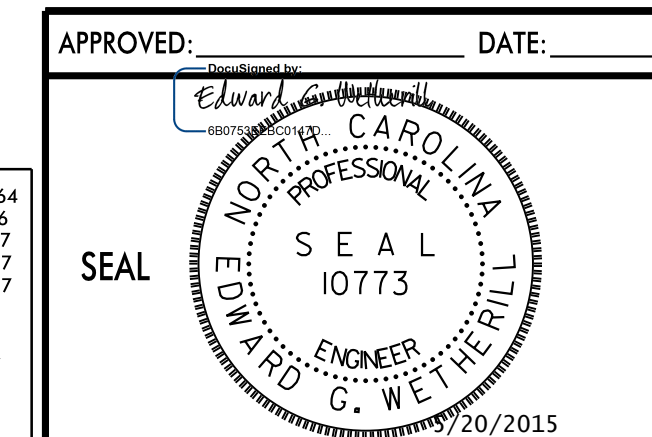
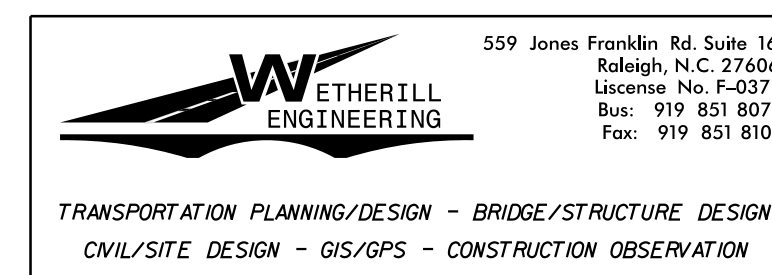
- -Y1- SB STA. 12+32+/- TO STA. 41+00+/-

USING ROADWAY STANDARD DRAWING NO. 1101.02, SHEET 3 OF 15, REMOVE US 421 NB PORTABLE CONCRETE BARRIER FROM OUTSIDE SHOULDER AND CRASH CUSHION (INSTALLED IN PHASE III - PART C, STEP 3) AND REPLACE WITH DRUMS AS FOLLOWS:

- -Y1- NB STA. 12+22+/- TO STA. 23+50+/-
- -Y1- NB STA. 34+75+/- TO STA. 43+95+/- (RESET TEMPORARY CRASH CUSHION AT STA. 34+75+/-).

SEE TMP-42 FOR PHASE III (PART A) AND PHASE III (PART B) CONSTRUCTION.

5/20/2015 8:46:10 AM F:\2012\N-2915A\TrafficControl\ICP\2915A_IC_ICP_PSH_60.dgn



**PHASE III
TEMPORARY TRAFFIC
CONTROL DETAIL**