

PHASE III (PART A)

PHASE III (PART A) MAY BE COMPLETED CONCURRENTLY WITH PHASE III (PART B) OR PHASE III (PART C)

STEP 1) USING ROADWAY STANDARD DRAWING NO. 1101.02, SHEET 1 OF 15, AND FLAGGERS AS NECESSARY, PLACE PAVEMENT MARKINGS AND MARKERS AS MUCH AS POSSIBLE FOR THE TEMPORARY TWO-LANE, TWO-WAY PATTERN ON -L- (US 221) NEW NB LANES AND ON TEMPORARY -LSHIFT1- AND -LSHIFT3- (SEE TMP-43 THRU TMP-55).

INSTALL ANCHORED PORTABLE CONCRETE BARRIER AND CRASH CUSHIONS AT THE FOLLOWING:

- -L- (US 221) SB FROM -L- STA. 64+00+/- TO -L- STA. 69+00+/- (SEE TMP-47).

INSTALL TEMPORARY SIGNING ON -L- (US 221) NB FOR PHASE III, STEP 2 TRAFFIC SHIFT (SEE TMP-43 THRU TMP-55).

WORK IN A CONTINUOUS MANNER TO COMPLETE THE FOLLOWING WORK IN PHASE III (PART A) STEP 2:

STEP 2) USING ROADWAY STANDARD DRAWING NO. 1101.02, SHEET 1 OF 15, AND WORKING IN A CONTINUOUS MANNER, SHIFT US 221 TRAFFIC TO THE NEW NB LANES IN A TWO-LANE, TWO-WAY PATTERN AND COMPLETE MARKINGS (SEE TMP-43 THRU TMP-55, AND TMP-59A FOR -Y- LINE INTERSECTION MARKING AND SIGNING ADJUSTMENTS AT -Y2-, -Y3-, -Y4-, -Y6-, -Y7-, AND -Y9-). INSTALL TYPE III BARRICADES TO CLOSE OFF SECTIONS OF EXISTING US 221 ROADWAY WHERE NECESSARY.

STEP 3) USING ROADWAY STANDARD DRAWING NO. 1101.02, SHEET 1 OF 15, AND FLAGGERS AS NECESSARY, BEGIN THE FOLLOWING:

- -L- (US 221) SB STA. 60+00+/- TO STA. 113+75+/- (INCLUDING STAGE II BOX CULVERT AT STA 66+00+/-) (SEE TMP-47 THRU TMP-51).
- -L- STA. 130+35+/- TO STA. 158+00+/- (SEE TMP-52 THRU TMP-55).

USING ROADWAY STANDARD DRAWING NO. 1101.02, SHEET 1 OF 15, BEGIN CONSTRUCTION UP TO, BUT NOT INCLUDING, THE FINAL LAYER OF SURFACE COURSE UNDER TRAFFIC USING ONE-LANE, TWO-WAY TEMPORARY PATTERNS DURING FLAGGING OPERATIONS, RESTORING TRAFFIC TO THE EXISTING PATTERN AT THE END OF EACH WORKDAY AT THE FOLLOWING:

- -Y5- SR 1100 (CRANBERRY SPRINGS RD.) (SEE TMP-51).
- -Y8- (DEEP GAP ESTATES RD.) (SEE TMP-54).

PHASE III (PART B)

STEP 1) INSTALL/COVER TEMPORARY SIGNING ON US 421 SB AND NB FOR TEMPORARY SHIFTED FOUR-LANE, TWO-WAY TRAFFIC (SEE TMP-56 THRU TMP-59, AND TMP-43).

WORK IN A CONTINUOUS MANNER TO COMPLETE THE FOLLOWING WORK IN PHASE III (PART B) STEPS 2 AND 3:

STEP 2) USING ROADWAY STANDARD DRAWING NO. 1101.02, SHEET 3 OF 15, AND LAW ENFORCEMENT, MODIFY THE EXISTING US 221/US 421 TRAFFIC SIGNAL (SEE TMP-43 AND SIGNAL PLANS).

USING ROADWAY STANDARD DRAWING NO. 1101.02, SHEET 3 OF 15, REMOVE CONFLICTING MARKINGS ON US 421 SB AND PLACE PAVEMENT MARKINGS AND MARKERS FOR THE TEMPORARY -Y1- (US 421) SB SHIFTED TRAFFIC PATTERN (SEE TMP-56 THRU TMP-59, AND TMP-43).

SHIFT US 421 SB TRAFFIC TO THE TEMPORARY TWO-LANE, ONE-WAY SHIFTED PATTERN (SEE TMP-56 THRU TMP-59, AND TMP-43). INSTALL DRUMS ALONG US 421 SB MEDIAN UNTIL PORTABLE CONCRETE MEDIAN CAN BE INSTALLED.

STEP 3) USING ROADWAY STANDARD DRAWING NO. 1101.02, SHEET 3 OF 15, REMOVE CONFLICTING MARKINGS ON US 421 NB AND PLACE PAVEMENT MARKINGS AND MARKERS FOR THE TEMPORARY -Y1- (US 421) NB SHIFTED TRAFFIC PATTERN (SEE TMP-56 THRU TMP-59, AND TMP-43).

SHIFT US 421 NB TRAFFIC TO THE TEMPORARY TWO-LANE, ONE-WAY SHIFTED PATTERN. INSTALL DRUMS ALONG THE NB MEDIAN UNTIL PORTABLE CONCRETE MEDIAN CAN BE INSTALLED.

STEP 4) USING ROADWAY STANDARD DRAWING NO. 1101.02, SHEET 3 OF 15, REMOVE/RESET AND INSTALL ADDITIONAL PORTABLE CONCRETE BARRIER AND CRASH CUSHIONS AS NECESSARY FOR PROPOSED MEDIAN CONSTRUCTION ALONG US 421 SB AND NB.

STEP 5) BEHIND BARRIER, CONSTRUCT PROPOSED -Y1- (US 421) MEDIAN AS FOLLOWS:

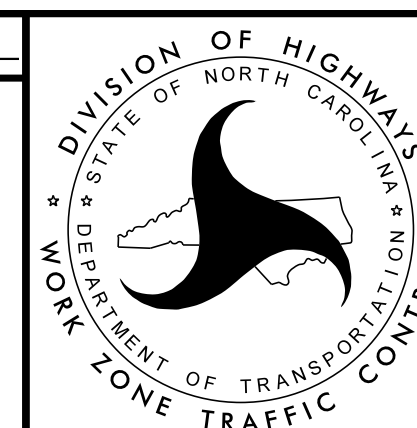
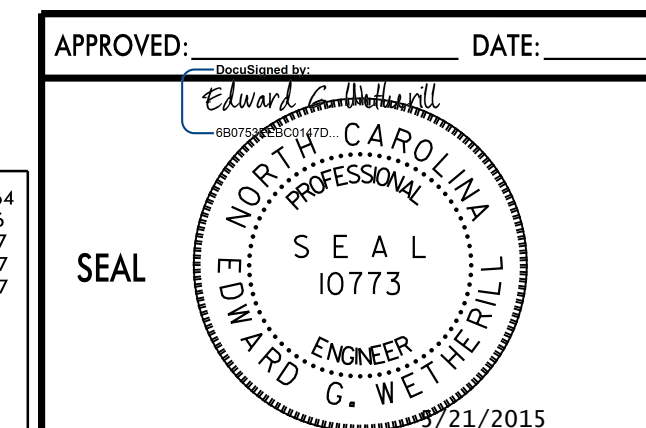
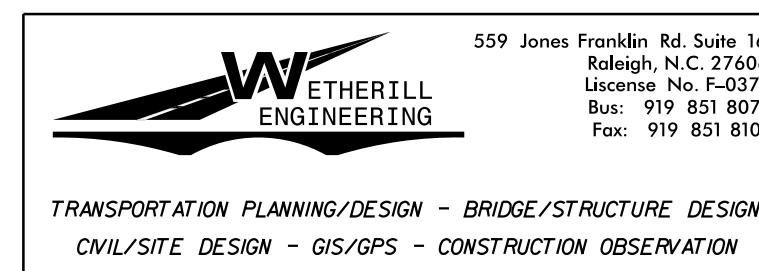
- -Y1- (US 421) STA. 12+22+/- TO STA. 23+50+/- (PERMANENT MEDIAN PAVEMENT INCLUDING PERMANENT MEDIAN BARRIER) (SEE TMP-56 AND TMP-57). CONSTRUCT UP TO, BUT NOT INCLUDING, THE FINAL LAYER OF SURFACE COURSE.
- -Y1- (US 421) STA. 23+50+/- TO STA. 32+16+/- (TEMPORARY WEDGED PERMANENT MEDIAN PAVEMENT EXCLUDING PERMANENT MEDIAN BARRIER) (SEE TMP-57 AND TMP-43, AND ROADWAY PLANS).
- -Y1- (US 421) STA. 33+00+/- TO STRUCTURE INTERIOR BENT (PERMANENT MEDIAN PAVEMENT EXCLUDING PERMANENT MEDIAN BARRIER) (SEE TMP-43).
- -Y1- (US 421) STA. 33+50+/- (INTERIOR BRIDGE BENT) TO STA. 52+10+/- (PERMANENT MEDIAN PAVEMENT INCLUDING PERMANENT MEDIAN BARRIER) (SEE TMP-57 AND TMP-43). CONSTRUCT UP TO, BUT NOT INCLUDING, THE FINAL LAYER OF SURFACE COURSE.

USING ROADWAY STANDARD DRAWING NO. 1101.02, SHEET 3 OF 15, CONSTRUCT PROPOSED MEDIAN AREAS ON US 421 NB AND SB THAT ARE NOT BEHIND BARRIER AS FOLLOWS:

- -Y1- (US 421) STA. 11+85+/- TO STA. 12+22+/- (SEE TMP-56).

SEE TMP-60 FOR PHASE III (PART C) CONSTRUCTION.

5/20/2015 8:34:36 AM P:\2012\AR-2915A\TrafficControl\TrafficControl\TCP\AR2915A_TC_TCP_PSH_42.dgn



**PHASE III
TEMPORARY TRAFFIC
CONTROL DETAIL**