

ROADWAY DESIGN ENGINEER  
 PROFESSIONAL SEAL 26960  
 REYNOLDS, SMITH AND HILLS

HYDRAULICS ENGINEER  
 PROFESSIONAL SEAL 036188  
 WILL WEATHERS

8/10/2015

**RS&H**  
 IMPROVING YOUR WORLD

RS&H Architects-Engineers-Planners, Inc.  
 1520 South Boulevard, Suite 200  
 Charlotte, NC 28203  
 Phone: 704-752-0610  
 www.rsandh.com

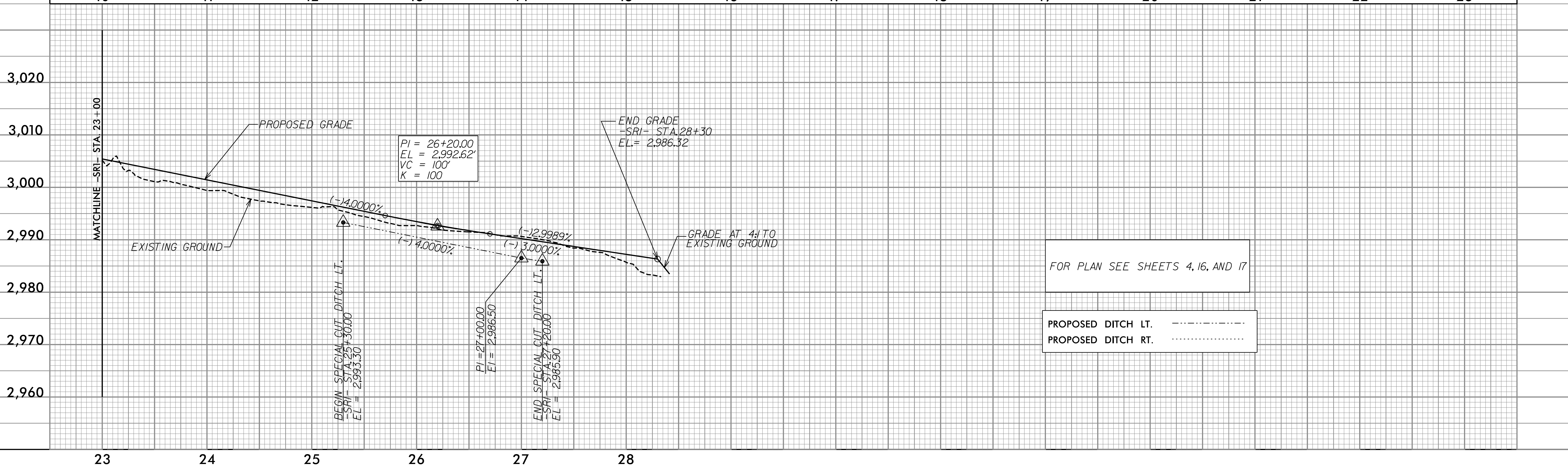
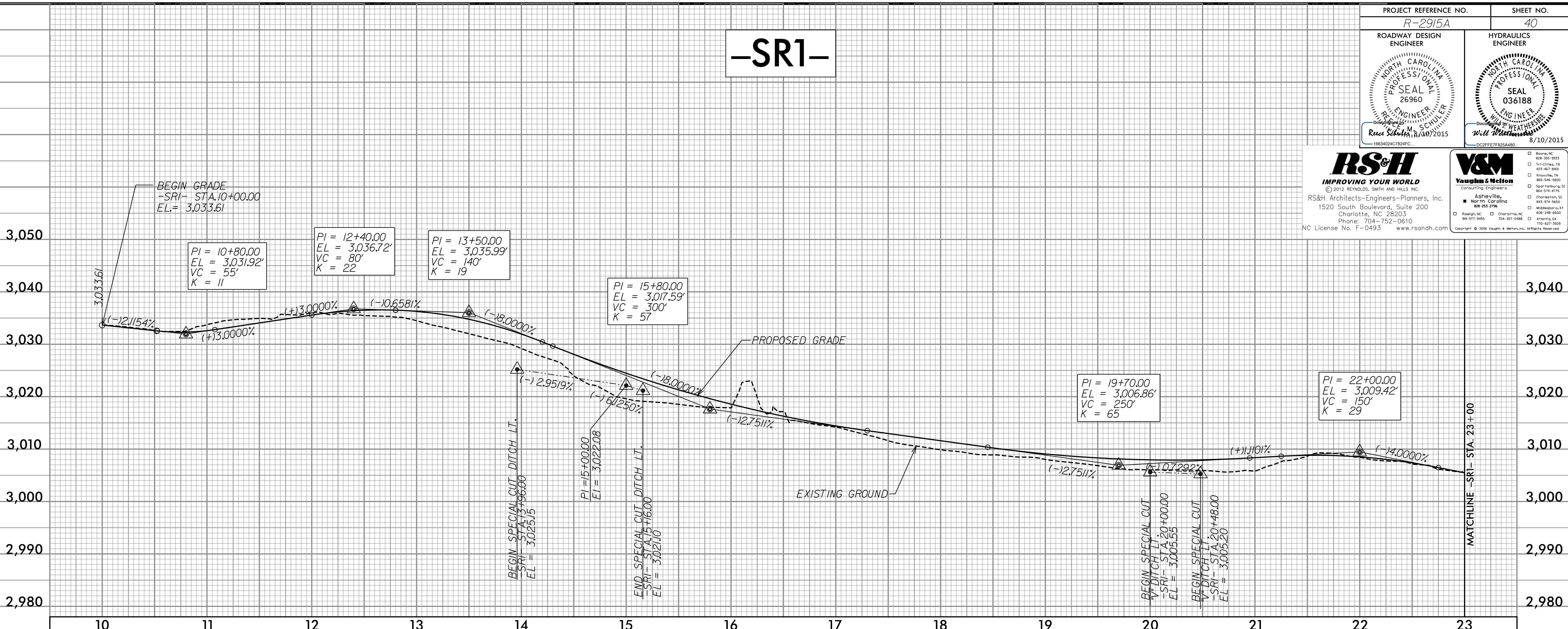
**V&M**  
 Vaughan & Melton  
 Consulting Engineers

Asheville, NC  
 Raleigh, NC  
 Charlotte, NC  
 919-977-9455

Winston-Salem, NC  
 Durham, NC  
 Mooresville, NC  
 704-298-1600

NC License No. F-0493

# -SR1-



FOR PLAN SEE SHEETS 4, 16, AND 17

PROPOSED DITCH LT. -----

PROPOSED DITCH RT. ....

5/14/99

MATCHLINE -SR1- STA. 10+00

MATCHLINE -SR1- STA. 23+00

MATCHLINE -SR1- STA. 23+00

MATCHLINE -SR1- STA. 28+30