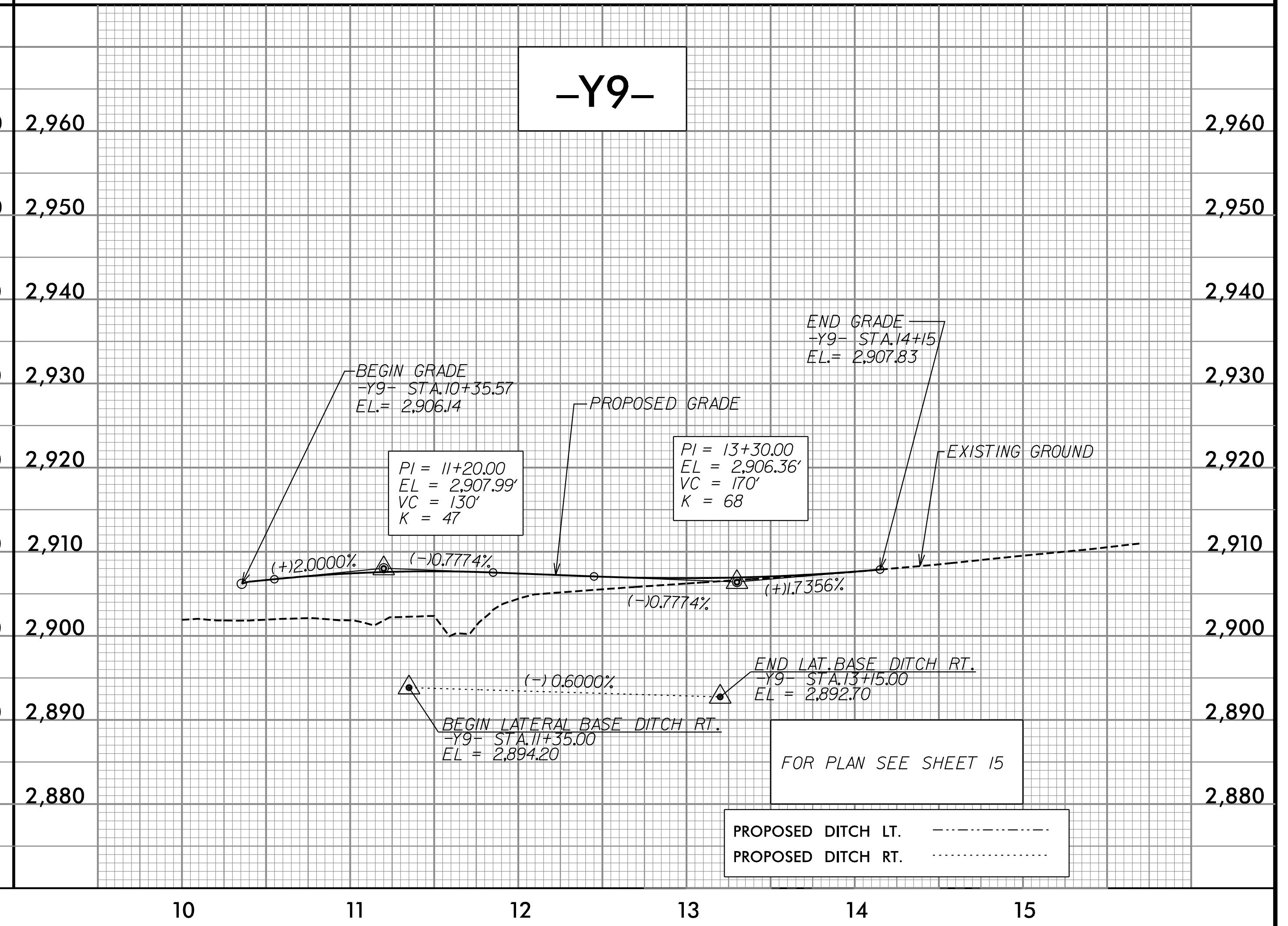
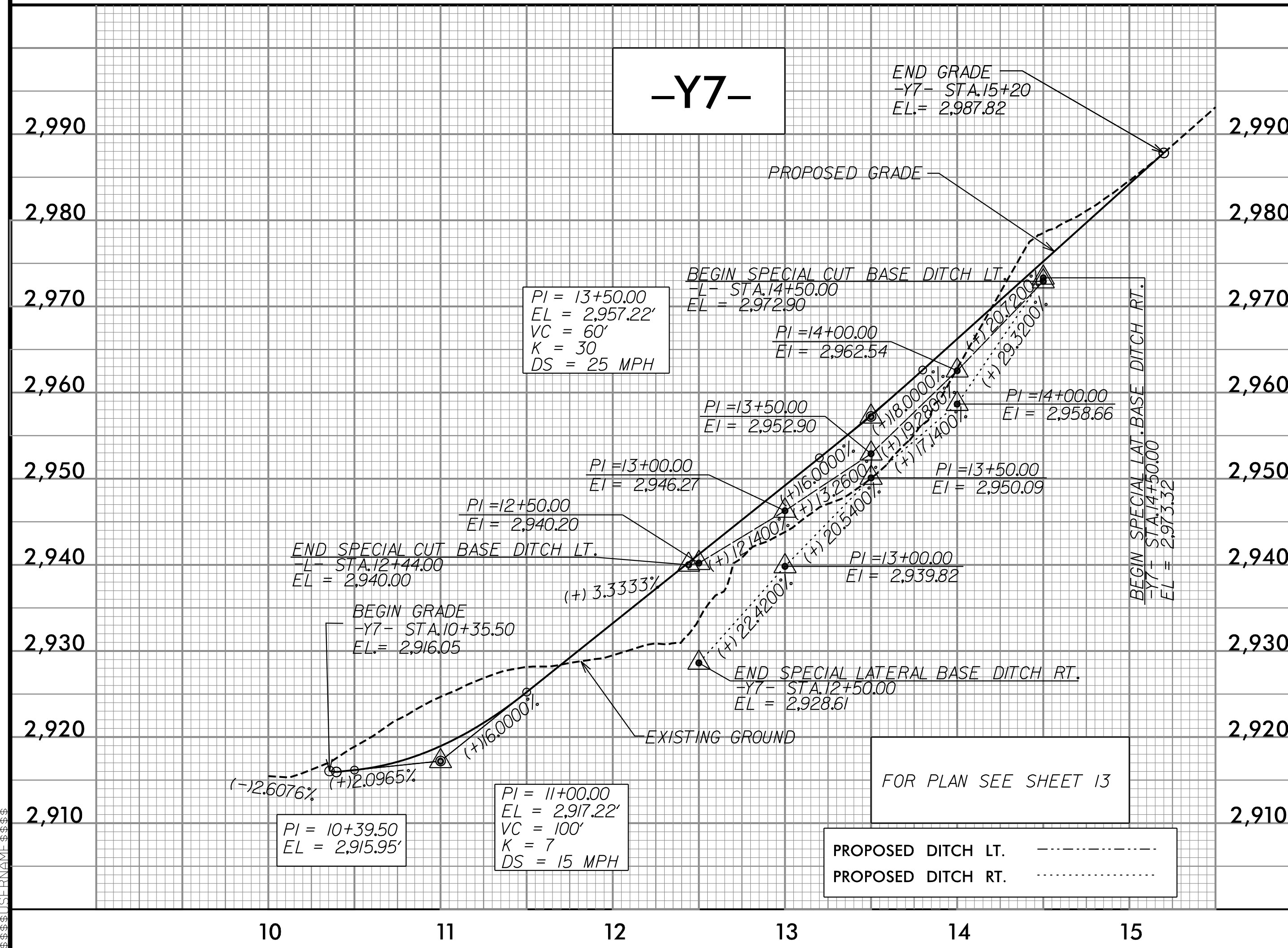
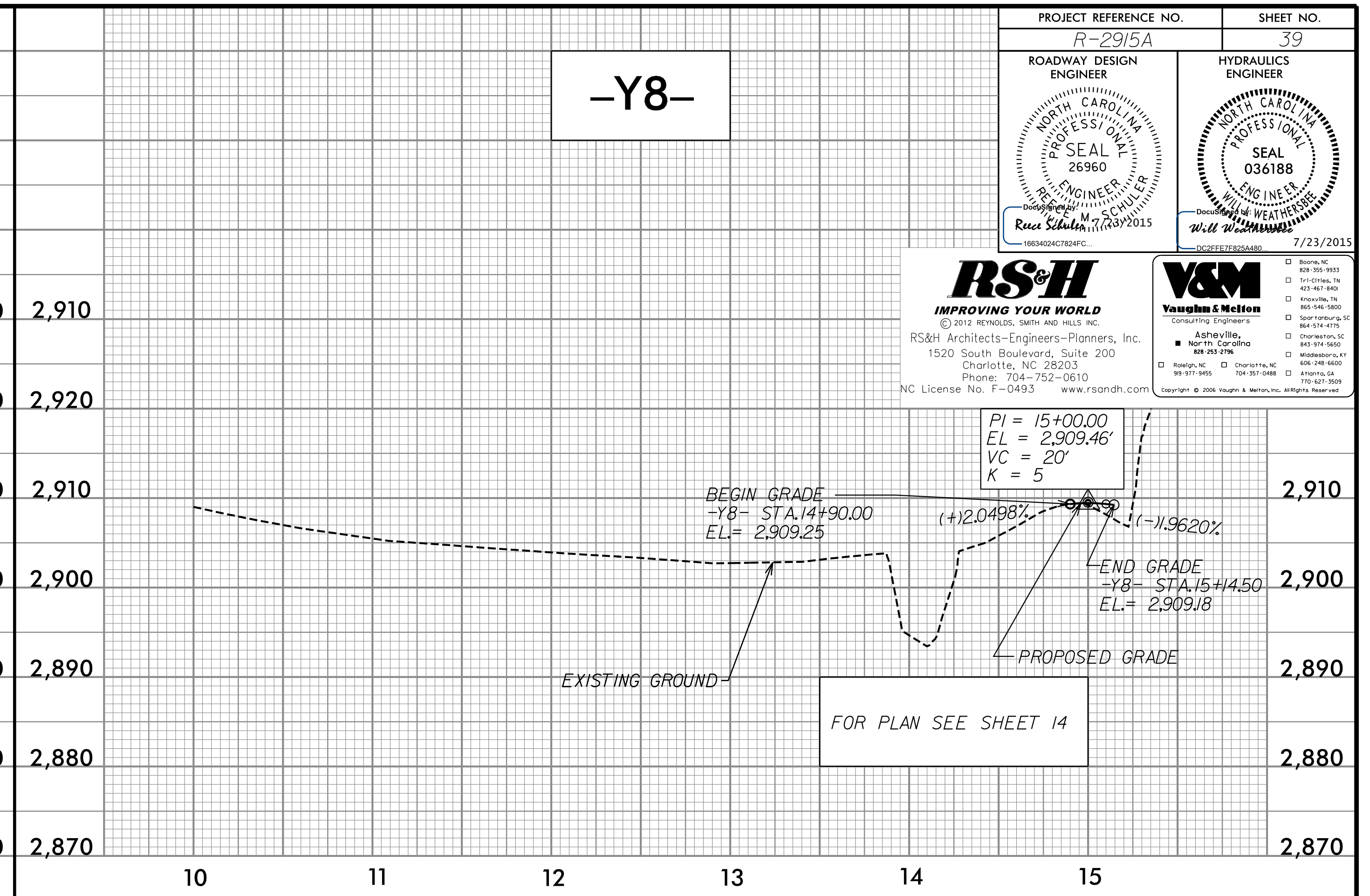
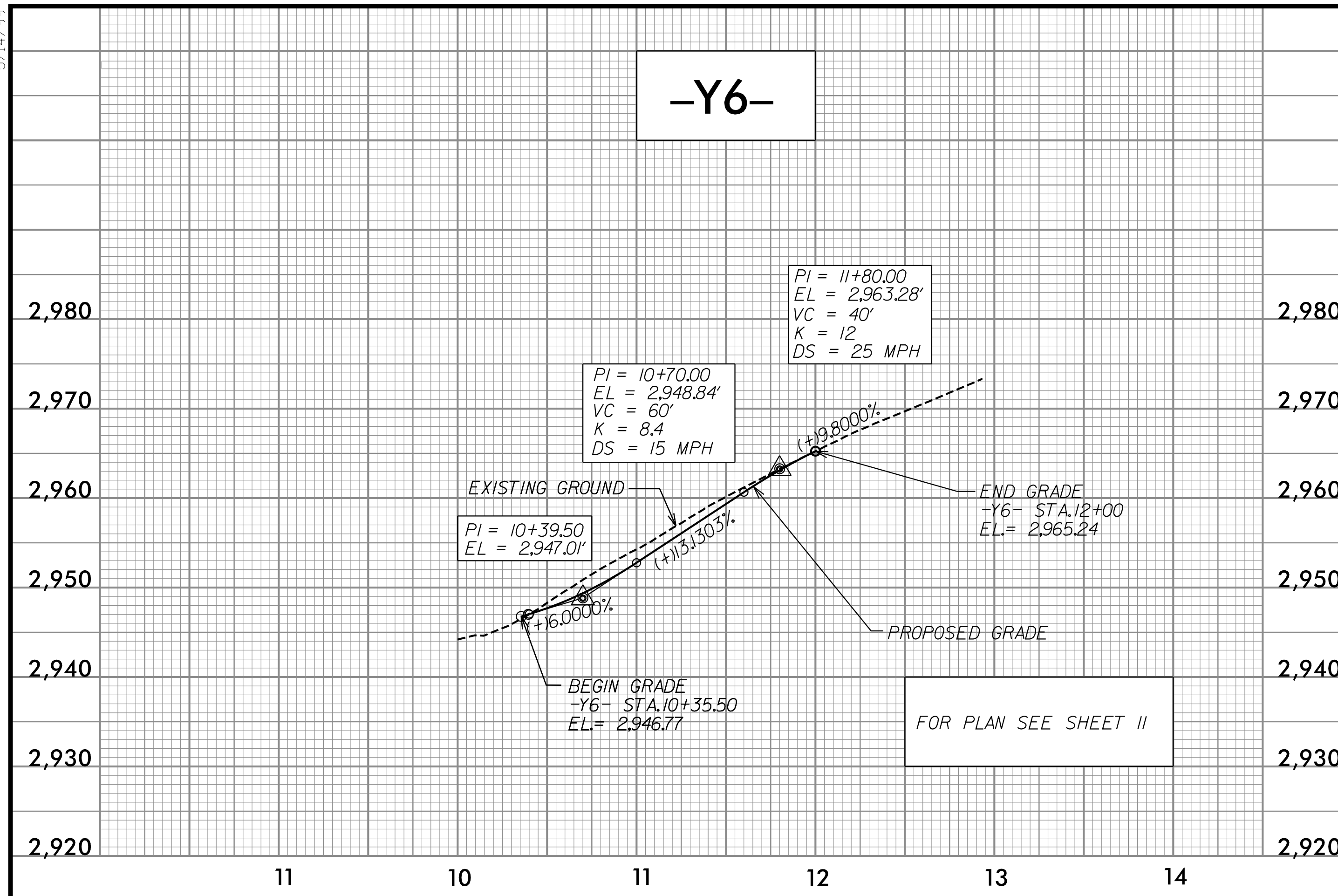


5/14/99

PROJECT REFERENCE NO. R-2915A	SHEET NO. 39
ROADWAY DESIGN ENGINEER Russ Schuler Professional Seal SEAL 26960 Professional Engineer No. 7239 7/23/2015	HYDRAULICS ENGINEER Will Woodhouse Professional Seal SEAL 036188 Professional Engineer No. 1031 7/23/2015

RS&H
IMPROVING YOUR WORLD
© 2012 REYNOLDS, SMITH AND HILLS, INC.
RS&H Architects-Engineers-Planners, Inc.
1520 South Boulevard, Suite 200
Charlotte, NC 28203
Phone: 704-752-0610
NC License No. F-0493 www.rsandh.com

V&M
Vaughan & Melton
Consulting Engineers
Asheville, NC
North Carolina
988-977-9455 704-357-0488
4400-1000
Copyright © 2006 Vaughan & Melton, Inc. All Rights Reserved.



5/14/99