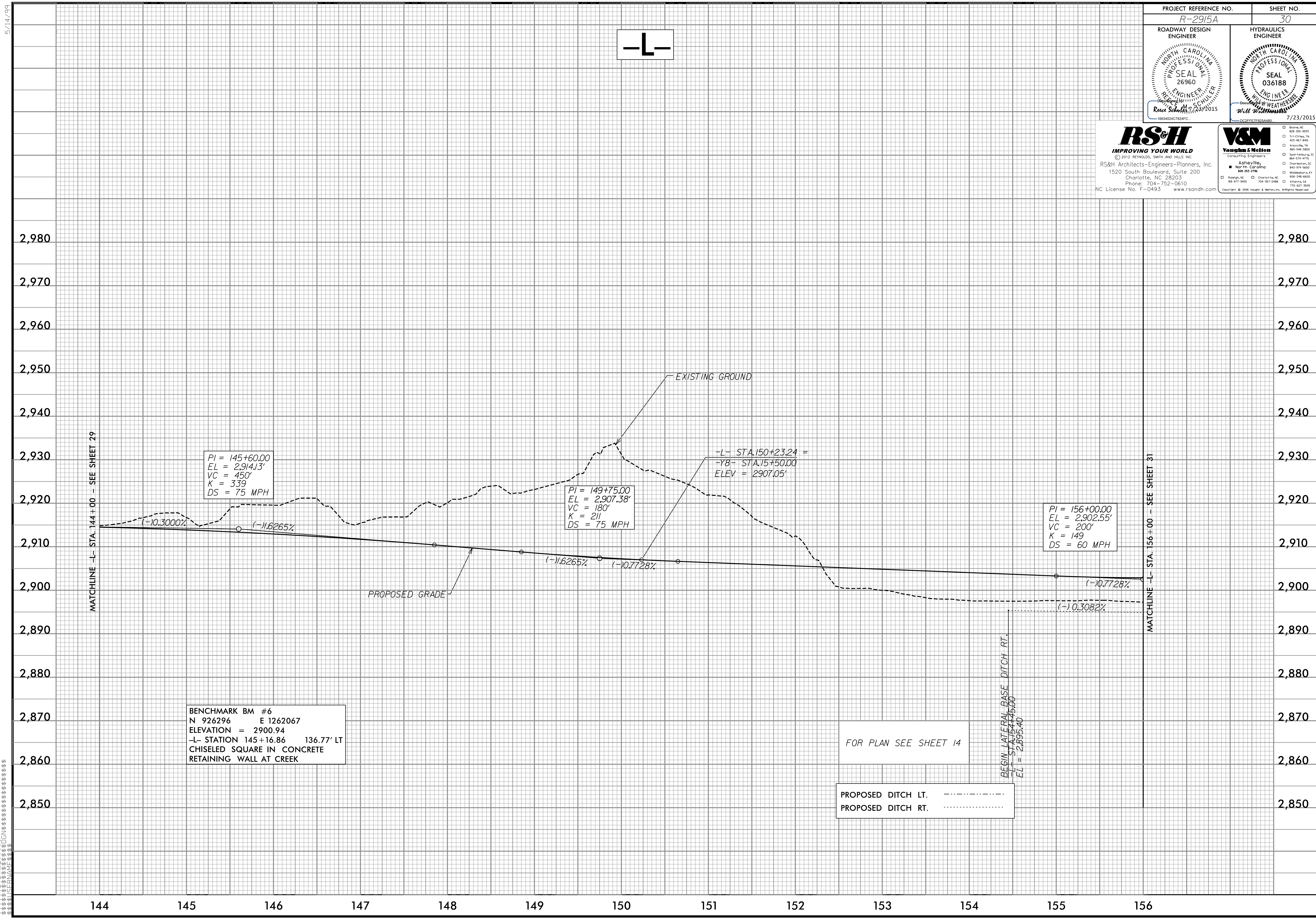


PROJECT REFERENCE NO. R-2915A	SHEET NO. 30
ROADWAY DESIGN ENGINEER RECE SCHULTE Professional Seal 26960	HYDRAULICS ENGINEER WILL WEATHERS Professional Seal 036188
7/23/2015	

RS&H
IMPROVING YOUR WORLD
© 2012 REYNOLDS, SMITH AND HILLS, INC.
RS&H Architects-Engineers-Planners, Inc.
1520 South Boulevard, Suite 200
Charlotte, NC 28203
Phone: 704-752-0610
NC License No. F-0493 www.rsandh.com

V&M
Vaughan & Melton
Consulting Engineers
Asheville, North Carolina
919-977-9455 704-357-0488
Copyright © 2006 Vaughan & Melton, Inc. All Rights Reserved.



PI = 145+60.00
EL = 2,914.13'
VC = 450'
K = 339
DS = 75 MPH

PI = 149+75.00
EL = 2,907.38'
VC = 180'
K = 211
DS = 75 MPH

PI = 156+00.00
EL = 2,902.55'
VC = 200'
K = 149
DS = 60 MPH

BENCHMARK BM #6
N 926296 E 1262067
ELEVATION = 2900.94
-L- STATION 145+16.86 136.77' LT
CHISELED SQUARE IN CONCRETE
RETAINING WALL AT CREEK

FOR PLAN SEE SHEET 14

PROPOSED DITCH LT. - - - - -
PROPOSED DITCH RT.

BEGIN LATERAL BASE DITCH RT.
-L- STA. 15+45.00
EL = 2,895.40

5/14/99