

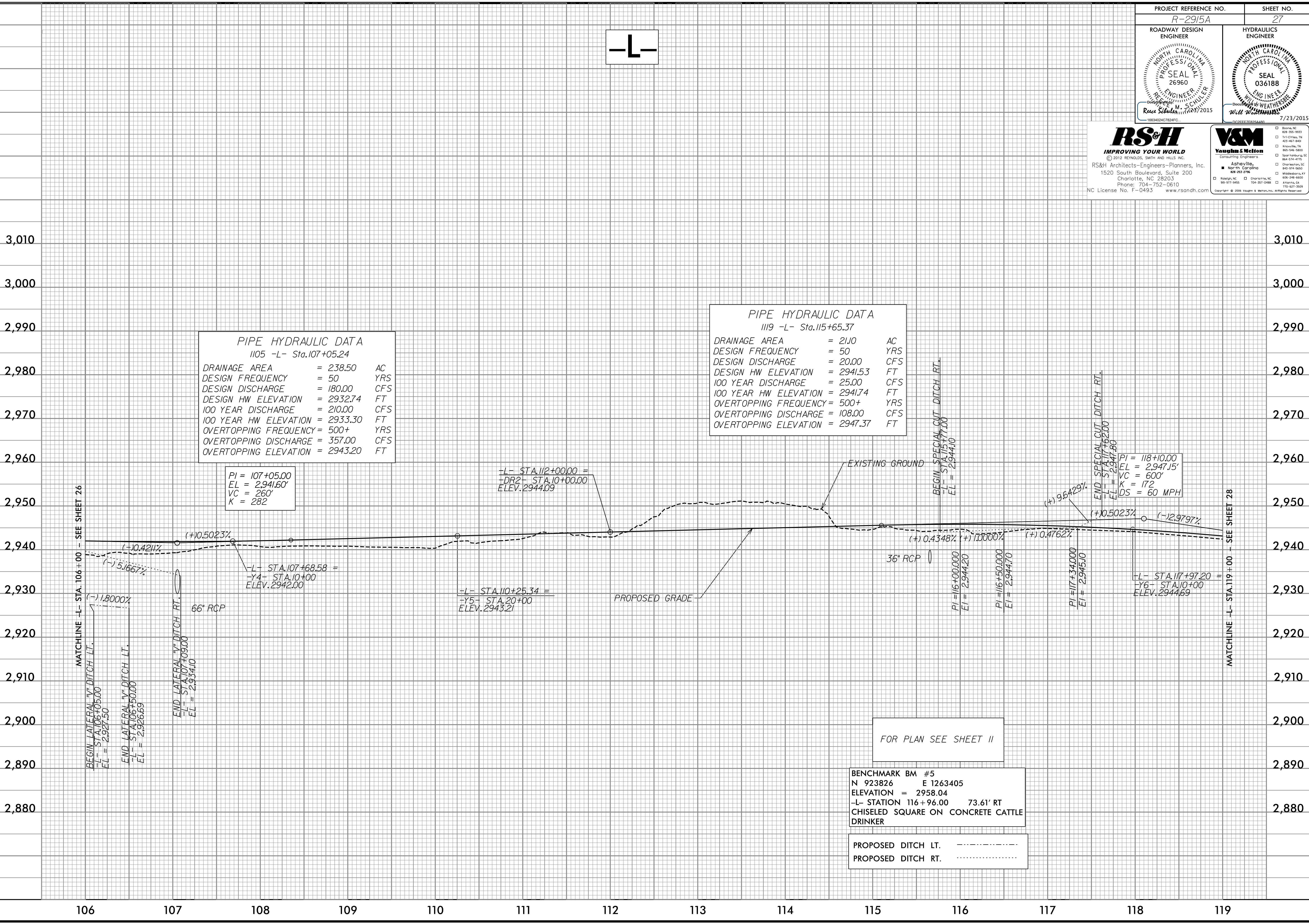
PROJECT REFERENCE NO. R-2915A	SHEET NO. 27
ROADWAY DESIGN ENGINEER RUSS SCHULTE Professional Seal 26960 Date: 07/23/2015	HYDRAULICS ENGINEER WILL WEATHERS Professional Seal 036188 Date: 07/23/2015

RS&H
IMPROVING YOUR WORLD
© 2012 REYNOLDS, SMITH AND HILLS, INC.
RS&H Architects-Engineers-Planners, Inc.
1520 South Boulevard, Suite 200
Charlotte, NC 28203
Phone: 704-752-0610
NC License No. F-0493 www.rsandh.com

V&M
Vaughan & Melton
Consulting Engineers
Asheville, North Carolina
919-977-9455 704-357-0488
Copyright © 2006 Vaughan & Melton, Inc. All Rights Reserved

5/14/99

-L-



PIPE HYDRAULIC DATA
1105 -L- Sta.107+05.24

DRAINAGE AREA	= 238.50	AC
DESIGN FREQUENCY	= 50	YRS
DESIGN DISCHARGE	= 180.00	CFS
DESIGN HW ELEVATION	= 2932.74	FT
100 YEAR DISCHARGE	= 210.00	CFS
100 YEAR HW ELEVATION	= 2933.30	FT
OVERTOPPING FREQUENCY	= 500+	YRS
OVERTOPPING DISCHARGE	= 357.00	CFS
OVERTOPPING ELEVATION	= 2943.20	FT

PIPE HYDRAULIC DATA
1119 -L- Sta.115+65.37

DRAINAGE AREA	= 2110	AC
DESIGN FREQUENCY	= 50	YRS
DESIGN DISCHARGE	= 20.00	CFS
DESIGN HW ELEVATION	= 2941.53	FT
100 YEAR DISCHARGE	= 25.00	CFS
100 YEAR HW ELEVATION	= 2941.74	FT
OVERTOPPING FREQUENCY	= 500+	YRS
OVERTOPPING DISCHARGE	= 108.00	CFS
OVERTOPPING ELEVATION	= 2947.37	FT

PI = 107+05.00
EL = 2,941.60'
VC = 260'
K = 282

+L- STA.112+00.00 =
+DR2- STA.10+00.00
ELEV. 2944.09

-L- STA.107+68.58 =
-Y4- STA.10+00
ELEV. 2942.00

-L- STA.110+25.34 =
-Y5- STA.20+00
ELEV. 2943.21

PI = 118+10.00
EL = 2,947.15'
VC = 600'
K = 172
DS = 60 MPH

+L- STA.117+97.20 =
+Y6- STA.10+00
ELEV. 2944.69

FOR PLAN SEE SHEET 11

BENCHMARK BM #5
N 923826 E 1263405
ELEVATION = 2958.04
-L- STATION 116+96.00 73.61' RT
CHISELED SQUARE ON CONCRETE CATTLE
DRINKER

PROPOSED DITCH LT. -----
PROPOSED DITCH RT.