

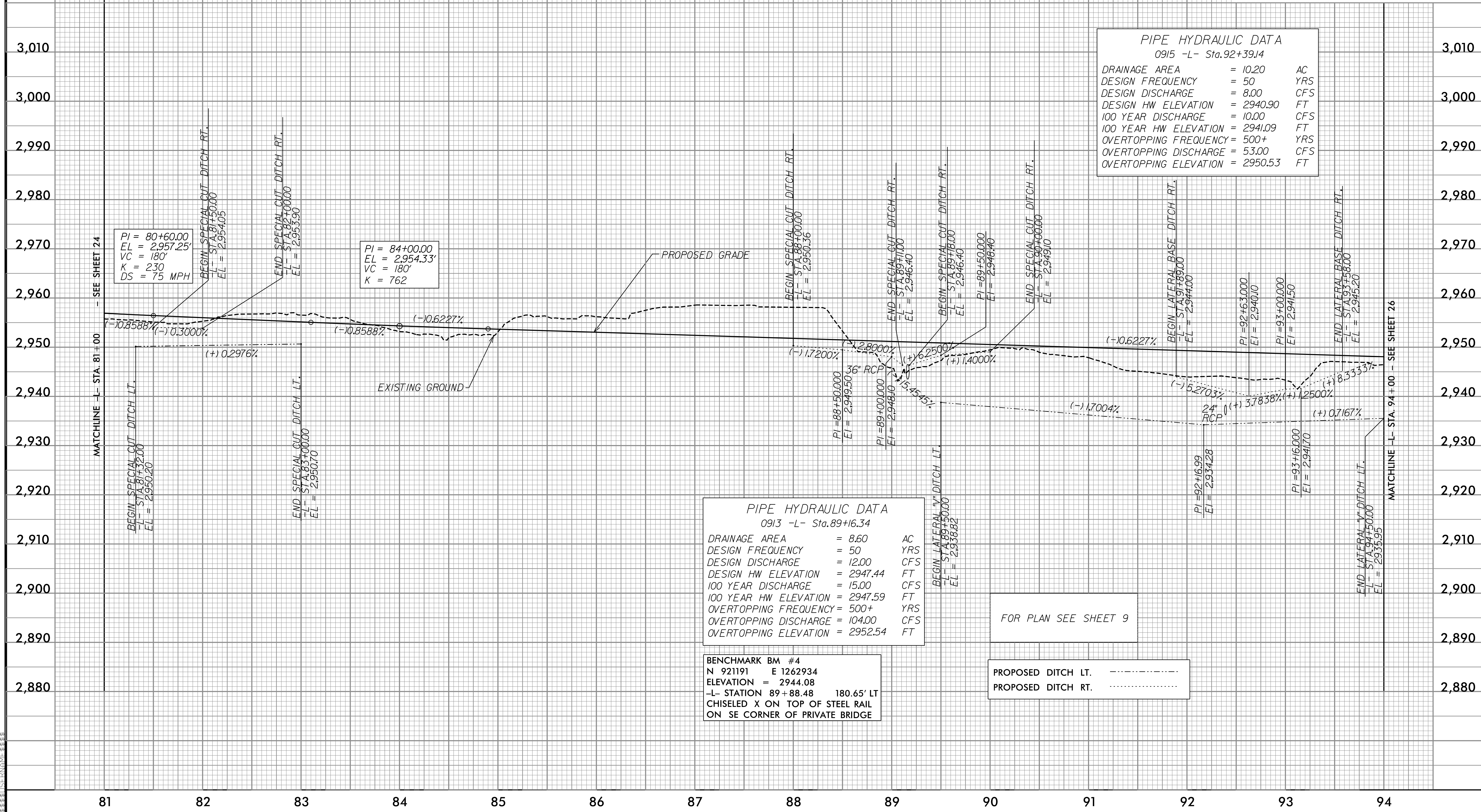
PROJECT REFERENCE NO. R-2915A	SHEET NO. 25
ROADWAY DESIGN ENGINEER Reese Schuler Professional Seal SEAL 26960 7/23/2015	HYDRAULICS ENGINEER Will Weathers Professional Seal SEAL 036188 7/23/2015

RS&H
IMPROVING YOUR WORLD
© 2012 REYNOLDS, SMITH AND HILLS INC.
RS&H Architects-Engineers-Planners, Inc.
1520 South Boulevard, Suite 200
Charlotte, NC 28203
Phone: 704-752-0610
www.rsandh.com

V&M
Vaughan & Melton
Consulting Engineers
Asheville, North Carolina
919-977-9455 704-357-0488
4400 S. W. 10th St., Ft. Lauderdale, FL 33309
Copyright © 2006 Vaughan & Melton, Inc. All Rights Reserved.

5/14/99

-L-



PIPE HYDRAULIC DATA	
0915 -L- Sta.92+39J4	
DRAINAGE AREA	= 10.20 AC
DESIGN FREQUENCY	= 50 YRS
DESIGN DISCHARGE	= 8.00 CFS
DESIGN HW ELEVATION	= 2940.90 FT
100 YEAR DISCHARGE	= 10.00 CFS
100 YEAR HW ELEVATION	= 2941.09 FT
OVERTOPPING FREQUENCY	= 500+ YRS
OVERTOPPING DISCHARGE	= 53.00 CFS
OVERTOPPING ELEVATION	= 2950.53 FT

PIPE HYDRAULIC DATA	
0913 -L- Sta.89+16.34	
DRAINAGE AREA	= 8.60 AC
DESIGN FREQUENCY	= 50 YRS
DESIGN DISCHARGE	= 12.00 CFS
DESIGN HW ELEVATION	= 2947.44 FT
100 YEAR DISCHARGE	= 15.00 CFS
100 YEAR HW ELEVATION	= 2947.59 FT
OVERTOPPING FREQUENCY	= 500+ YRS
OVERTOPPING DISCHARGE	= 104.00 CFS
OVERTOPPING ELEVATION	= 2952.54 FT

BENCHMARK BM #4
N 921191 E 1262934
ELEVATION = 2944.08
-L- STATION 89+88.48 180.65' LT
CHISELED X ON TOP OF STEEL RAIL
ON SE CORNER OF PRIVATE BRIDGE

FOR PLAN SEE SHEET 9

PROPOSED DITCH LT. - - - - -
PROPOSED DITCH RT.

C:\Users\T.McCormick\Documents\Projects\2015\2915A\2915A.dwg