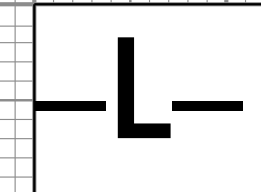


PROJECT REFERENCE NO. <b>R-2915A</b>	SHEET NO. <b>24</b>
ROADWAY DESIGN ENGINEER	HYDRAULICS ENGINEER

**RS&H**  
IMPROVING YOUR WORLD  
© 2012 REYNOLDS, SMITH AND HILLS, INC.  
RS&H Architects-Engineers-Planners, Inc.  
1520 South Boulevard, Suite 200  
Charlotte, NC 28203  
Phone: 704-752-0610  
NC License No. F-0493 www.rsandh.com

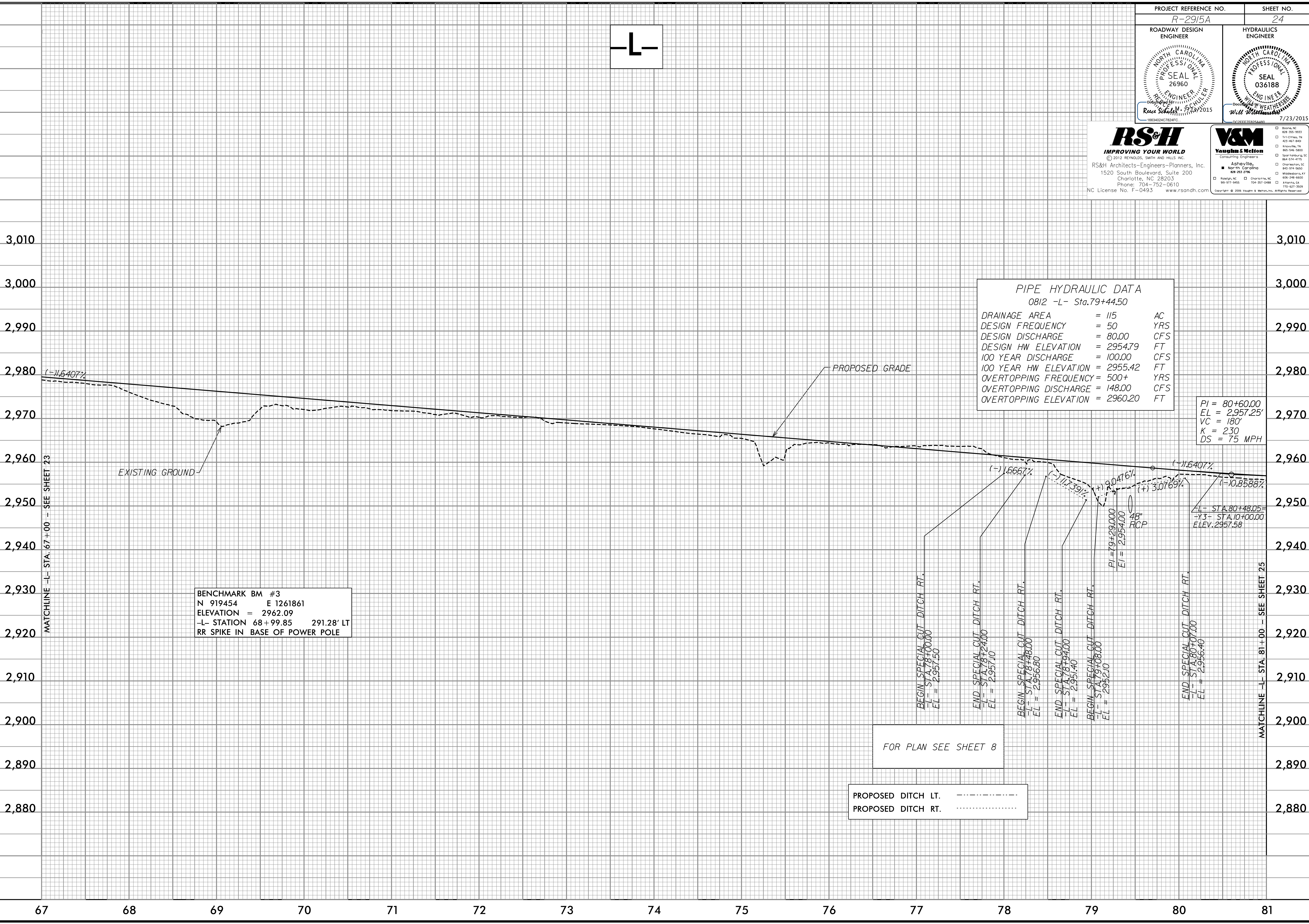
**V&M**  
Vaughan & Melton  
Consulting Engineers  
Asheville, North Carolina  
919-977-9455 704-357-0488  
4100 S. S. Moore Blvd., Suite 100  
Charlotte, NC 28217  
704-521-1900  
Copyright © 2006 Vaughan & Melton, Inc. All Rights Reserved.



**PIPE HYDRAULIC DATA**  
0812 -L- Sta.79+44.50

DRAINAGE AREA	= 115	AC
DESIGN FREQUENCY	= 50	YRS
DESIGN DISCHARGE	= 80.00	CFS
DESIGN HW ELEVATION	= 2954.79	FT
100 YEAR DISCHARGE	= 100.00	CFS
100 YEAR HW ELEVATION	= 2955.42	FT
OVERTOPPING FREQUENCY	= 500+	YRS
OVERTOPPING DISCHARGE	= 148.00	CFS
OVERTOPPING ELEVATION	= 2960.20	FT

PI = 80+60.00  
EL = 2957.25'  
VC = 180'  
K = 230  
DS = 75 MPH



**BENCHMARK BM #3**  
N 919454 E 1261861  
ELEVATION = 2962.09  
-L- STATION 68+99.85 291.28' LT  
RR SPIKE IN BASE OF POWER POLE

PROPOSED DITCH LT. - - - - -  
PROPOSED DITCH RT. . . . .

FOR PLAN SEE SHEET 8

5/14/99