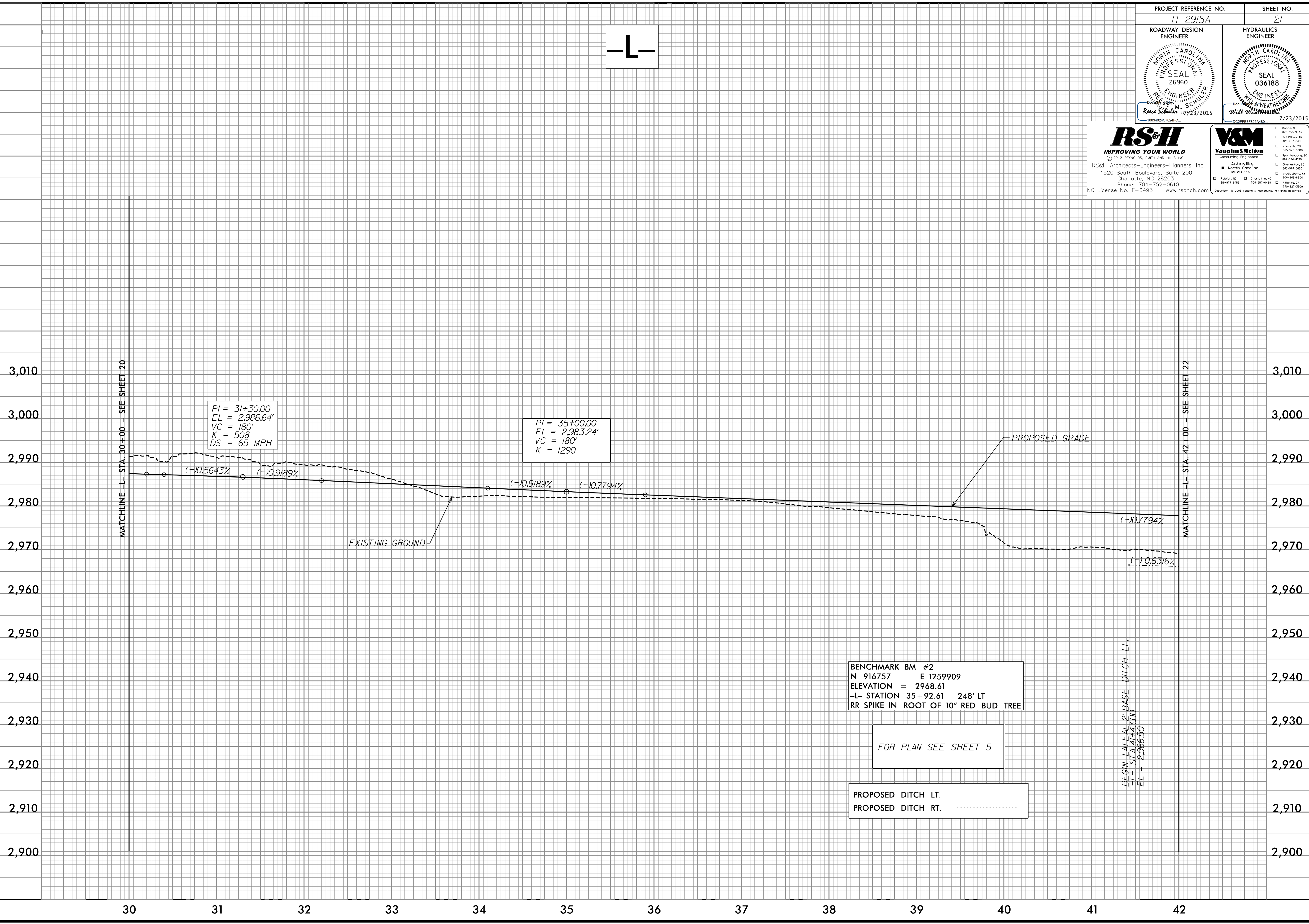


PROJECT REFERENCE NO. R-2915A	SHEET NO. 21
ROADWAY DESIGN ENGINEER Russ Schuler 16634024C7824FC 7/23/2015	HYDRAULICS ENGINEER Will Weathers 16634024C7824FC 7/23/2015

RS&H
IMPROVING YOUR WORLD
© 2012 REYNOLDS, SMITH AND HILLS INC.
RS&H Architects-Engineers-Planners, Inc.
1520 South Boulevard, Suite 200
Charlotte, NC 28203
Phone: 704-752-0610
NC License No. F-0493 www.rsandh.com

V&M
Vaughan & Melton
Consulting Engineers
Asheville, North Carolina
858-283-8788
958-977-9455
704-357-0488
704-621-1929
Copyright © 2006, Vaughn & Melton, Inc. All Rights Reserved.

-L-



5/14/99
MATCHLINE -L- STA. 30+00 - SEE SHEET 20
MATCHLINE -L- STA. 42+00 - SEE SHEET 22
BEGIN LATERAL BASE DITCH LT.
L- STA. 41+43.00
EL = 2,966.50