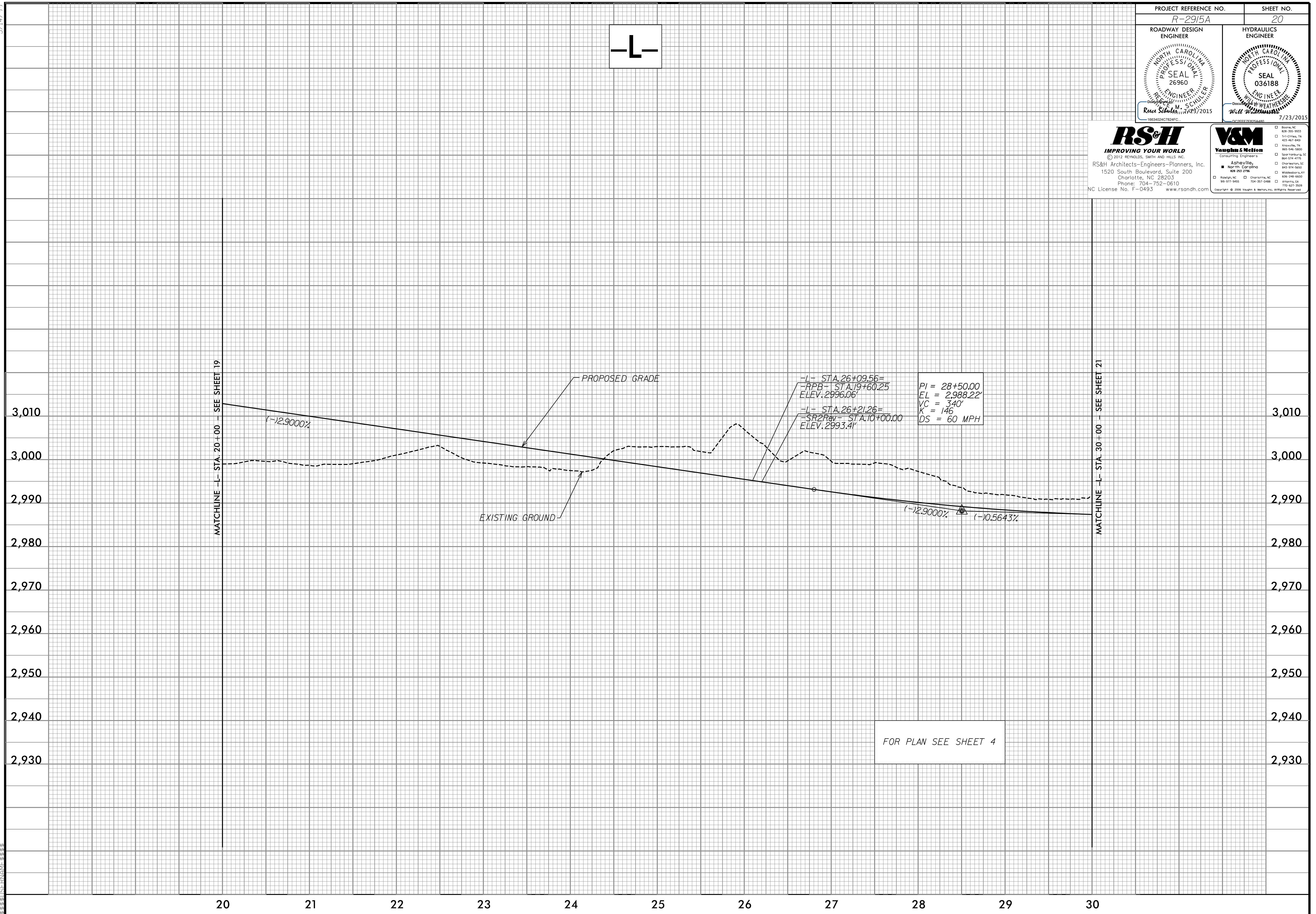


PROJECT REFERENCE NO. <b>R-2915A</b>	SHEET NO. <b>20</b>
ROADWAY DESIGN ENGINEER <b>Russ Schuster</b> Professional Seal SEAL 26960 7/23/2015	HYDRAULICS ENGINEER <b>Will Weathers</b> Professional Seal SEAL 036188 7/23/2015

**RS&H**  
IMPROVING YOUR WORLD  
© 2012 REYNOLDS, SMITH AND HILLS, INC.  
RS&H Architects-Engineers-Planners, Inc.  
1520 South Boulevard, Suite 200  
Charlotte, NC 28203  
Phone: 704-752-0610  
NC License No. F-0493 www.rsandh.com

**V&M**  
Vaughan & Melton  
Consulting Engineers  
Asheville, North Carolina  
919-977-9455 704-357-0488  
Copyright © 2006 Vaughan & Melton, Inc. All Rights Reserved.

-L-



5/14/99

MATCHLINE -L- STA. 20+00 - SEE SHEET 19

MATCHLINE -L- STA. 30+00 - SEE SHEET 21

FOR PLAN SEE SHEET 4