

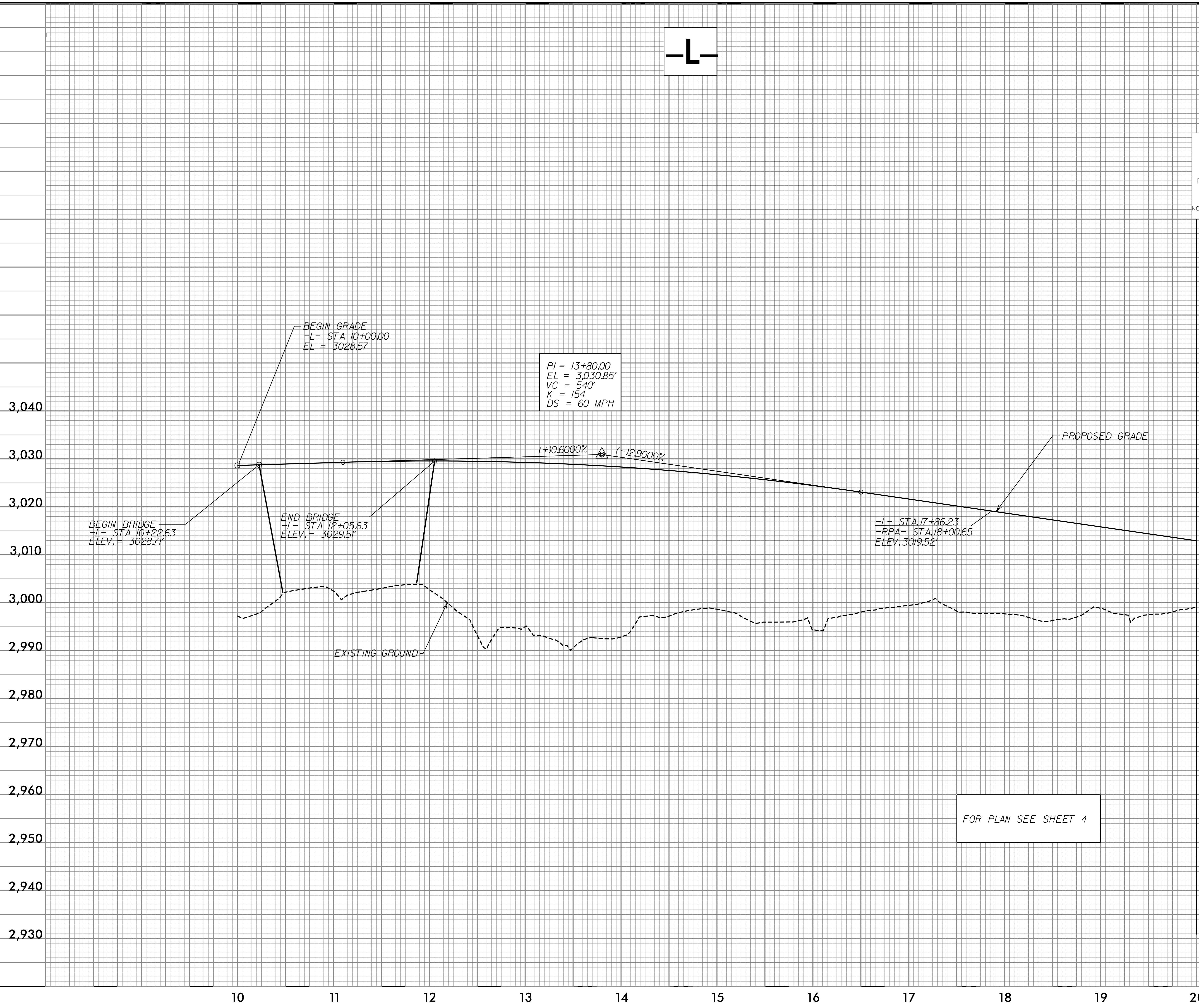
PROJECT REFERENCE NO. R-2915A	SHEET NO. 19
ROADWAY DESIGN ENGINEER ROBERT M. SCHULIER Professional Seal: SEAL 26960 Date: 7/23/2015	HYDRAULICS ENGINEER WILL WEATHERS Professional Seal: SEAL 036188 Date: 7/23/2015

RS&H
IMPROVING YOUR WORLD
© 2012 REYNOLDS, SMITH AND HILLS, INC.
RS&H Architects-Engineers-Planners, Inc.
1520 South Boulevard, Suite 200
Charlotte, NC 28203
Phone: 704-752-0610
NC License No. F-0493 www.rsandh.com

V&M
Vaughan & Melton
Consulting Engineers
Asheville, North Carolina
919-977-9455 704-357-0488
Charlotte, NC 28203
704-357-0488 704-357-1500
Copyright © 2006, Vaughan & Melton, Inc. All Rights Reserved.

-L-

5/14/99



MATCHLINE -L- STA. 20+00 - SEE SHEET 20

FOR PLAN SEE SHEET 4