

PROJECT REFERENCE NO. R-2915A	SHEET NO. 15
RW SHEET NO.	
ROADWAY DESIGN ENGINEER	HYDRAULICS ENGINEER

RS&H
IMPROVING YOUR WORLD
 © 2012 REMEDS, SOUTH AND HILLS, INC.
 RS&H Architects-Engineers-Planners, Inc.
 1520 South Boulevard, Suite 200
 Charlotte, NC 28203
 Phone: 704-752-0610
 NC License No. F-0493 www.rsandh.com

V&M
Vaughan & Melton
 Consulting Engineers
 Asheville, NC
 North Carolina
 608-253-2796
 Middleboro, Kentucky
 606-248-4400
 Spartanburg, South Carolina
 864-514-4775

10206	US 221	-L-	12024
17376			20188
175	1994		
395	3206		
	SR 1003	-Y9-	
YR 2015	130		
YR 2035	200		

NAD 83 CORS

-Y8- HORIZONTAL CURVE DATA

PI Sta 11+73.32
 $\Delta = 37^{\circ} 21' 26.0''$ (LT)
 $D = 28^{\circ} 38' 52.4''$
 $L = 130.40'$
 $T = 67.61'$
 $R = 200.00'$

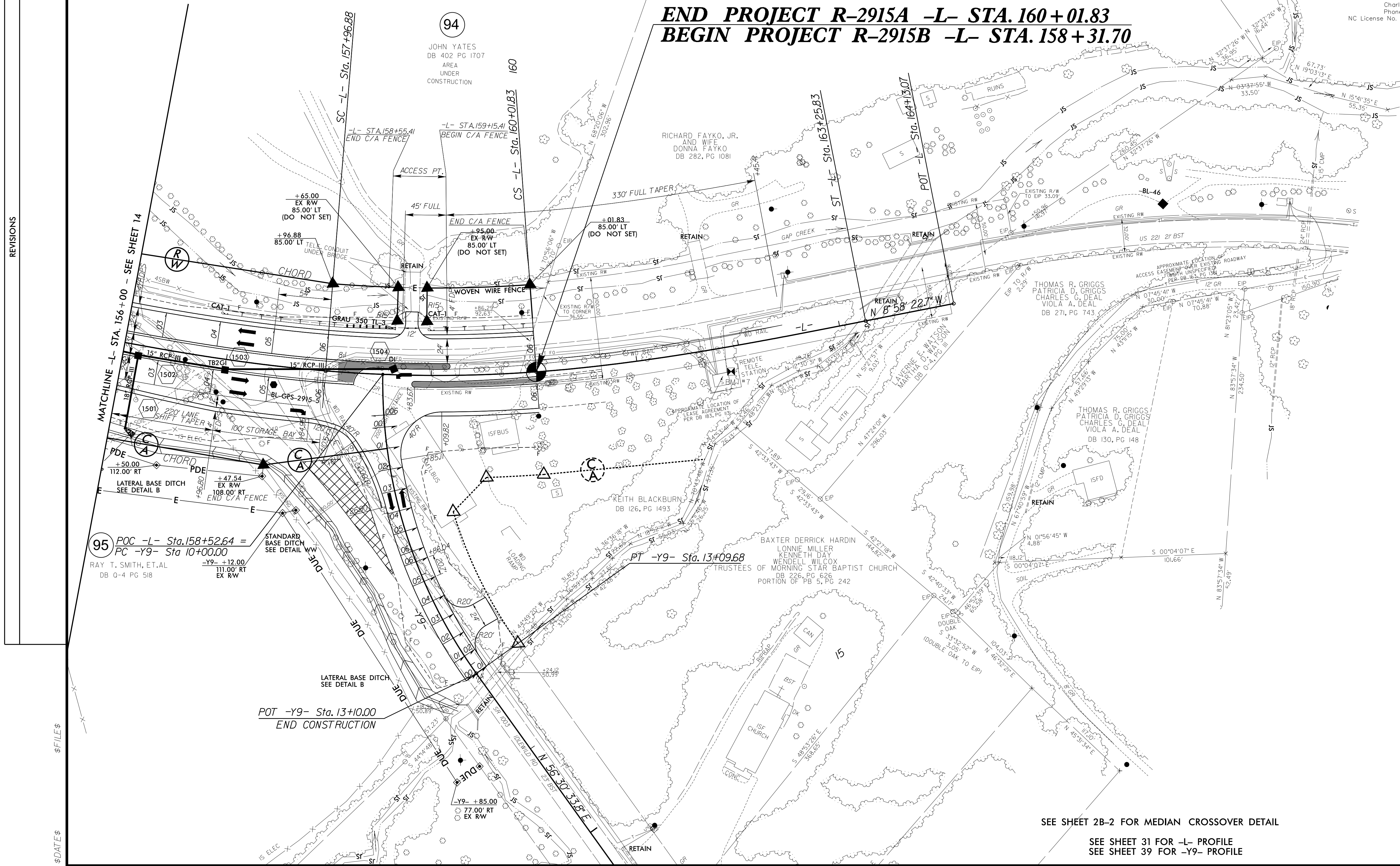
-Y9- HORIZONTAL CURVE DATA

PI Sta 11+60.32
 $\Delta = 36^{\circ} 35' 02.5''$ (LT)
 $D = 1^{\circ} 48' 48.8''$
 $L = 309.68'$
 $T = 160.32'$
 $R = 485.00'$
 $SE = 06$
 $RO = 124.08$

-L- HORIZONTAL CURVE DATA

PIs Sta 156+89.04 PI Sta 158+99.56 PIs Sta 161+09.99
 $\Theta_s = 6^{\circ} 58' 44.0''$ $\Delta = 8^{\circ} 49' 46.3''$ (LT) $\Theta_s = 6^{\circ} 58' 44.0''$
 $L_s = 324.00'$ $D = 4^{\circ} 18' 28.6''$ $L_s = 324.00'$
 $LT = 216.17'$ $L = 204.96'$ $LT = 216.17'$
 $ST = 108.15'$ $T = 102.68'$ $ST = 108.15'$
 $R = 1,330.00'$
 $SE = 06$
 $RO = 204.95$

END PROJECT R-2915A -L- STA. 160+01.83
BEGIN PROJECT R-2915B -L- STA. 158+31.70



95 POC -L- Sta. 158+52.64 =
 PC -Y9- Sta 10+00.00
 RAY T. SMITH, ET.AL
 DB 0-4 PG 518
 -Y9- +12.00
 111.00' RT
 EX RW

POT -Y9- Sta. 13+10.00
 END CONSTRUCTION

SEE SHEET 2B-2 FOR MEDIAN CROSSOVER DETAIL

SEE SHEET 31 FOR -L- PROFILE
 SEE SHEET 39 FOR -Y9- PROFILE

REVISIONS

\$FILES\$
\$DATES\$