

PROJECT REFERENCE NO. R-2915A		SHEET NO. 9	
RW SHEET NO.		HYDRAULICS ENGINEER	
ROADWAY DESIGN ENGINEER		SEAL 036188	

**V&M**  
Vaughan & Melton  
Consulting Engineers

Asheville, NC  
North Carolina  
828-253-2796

Boone, NC  
Tri-Cities, TN  
Knoxville, TN  
Spartanburg, SC  
Charlotte, NC  
Midwest, KY  
Atlanta, GA

Copyright © 2006 Vaughan & Melton, Inc. All Rights Reserved.

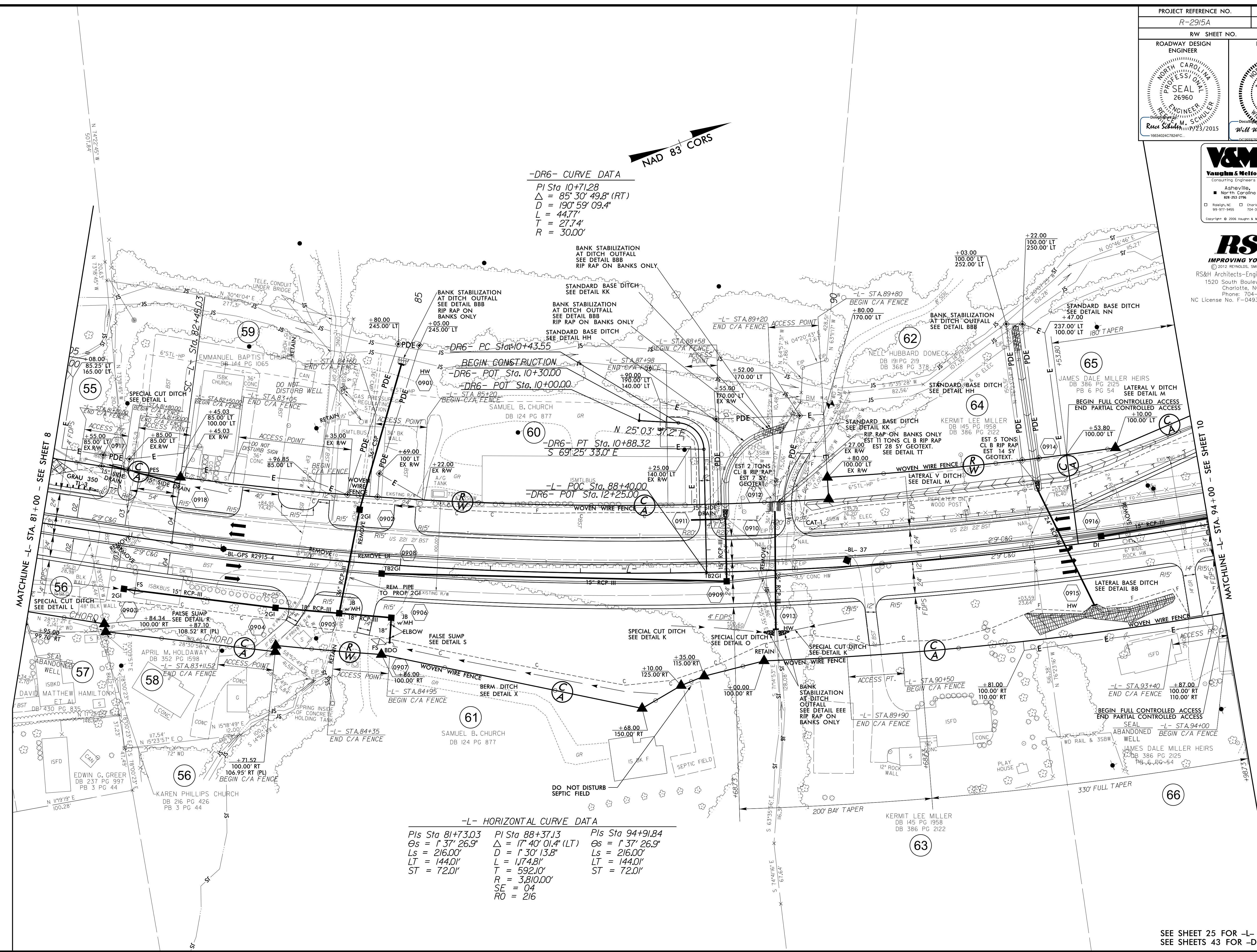
**RS&H**  
IMPROVING YOUR WORLD

© 2012 REYNOLDS, SMITH AND HILLS, INC.  
RS&H Architects-Engineers-Planners, Inc.  
1520 South Boulevard, Suite 200  
Charlotte, NC 28203  
Phone: 704-752-0610  
NC License No. F-0493 www.rsandh.com

**-DR6- CURVE DATA**  
 PI Sta 10+71.28  
 $\Delta = 85^{\circ} 30' 49.8''$  (RT)  
 D = 190' 59" 09.4"  
 L = 44.77'  
 T = 27.74'  
 R = 30.00'

**-L- HORIZONTAL CURVE DATA**

Pls Sta 81+73.03	PI Sta 88+37.13	Pls Sta 94+91.84
$\Delta s = 1^{\circ} 37' 26.9''$	$\Delta = 17^{\circ} 40' 01.4''$ (LT)	$\Delta s = 1^{\circ} 37' 26.9''$
Ls = 216.00'	D = 1' 30" 13.8"	Ls = 216.00'
LT = 144.01'	L = 1,174.81'	LT = 144.01'
ST = 72.01'	T = 592.10'	ST = 72.01'
	R = 3,810.00'	
	SE = 04	
	RO = 216	



REVISIONS

\$FILE\$  
\$DATE\$

SEE SHEET 25 FOR -L- PROFILE  
SEE SHEETS 43 FOR -DR6- PROFILE