

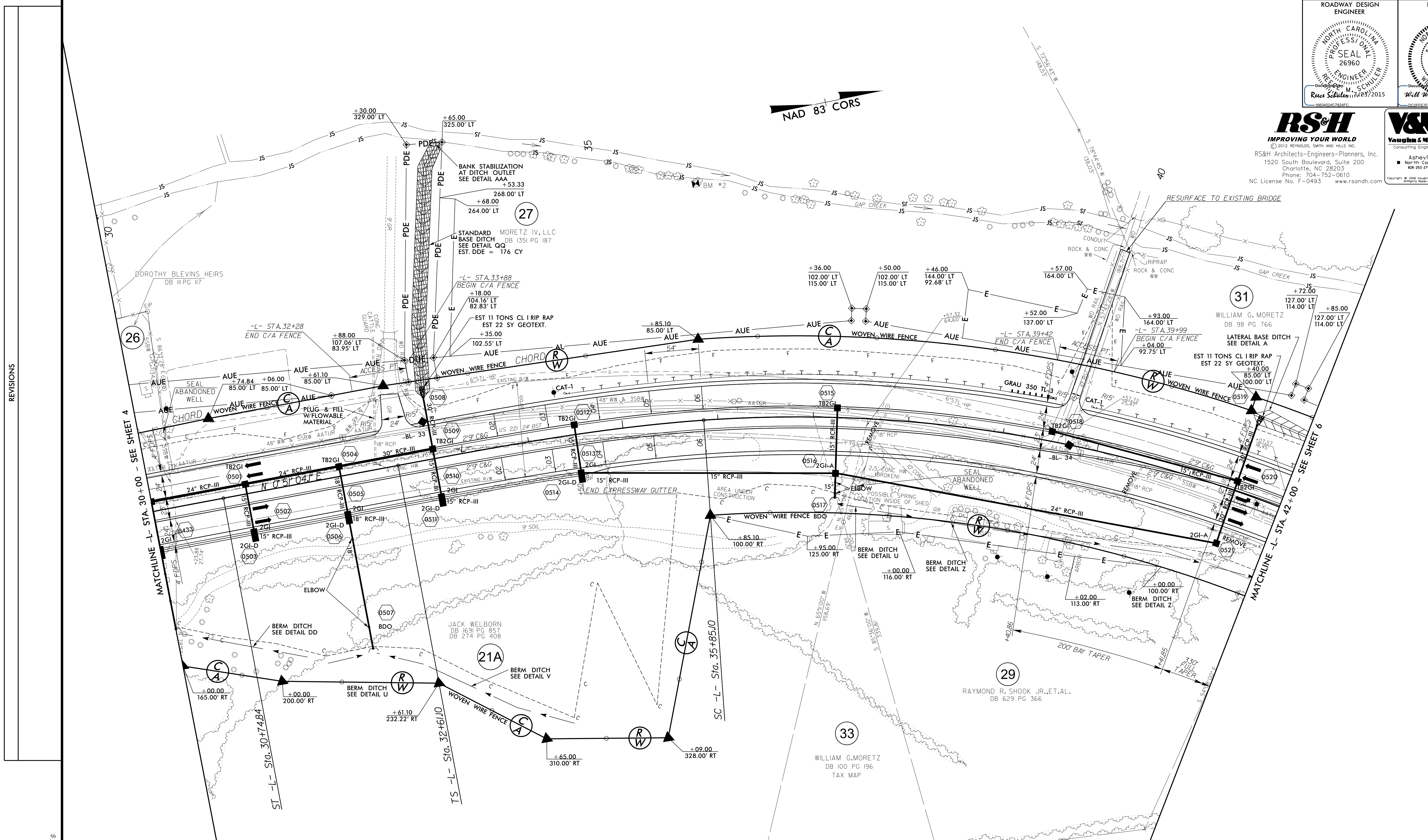
PROJECT REFERENCE NO. R-2915A		SHEET NO. 5	
RW SHEET NO.		HYDRAULICS ENGINEER	
ROADWAY DESIGN ENGINEER		ENGINEER	
R. Schuler, P.E. (09/2015)		W. L. Weather, P.E. (07/2015)	

**RS&H**  
IMPROVING YOUR WORLD

© 2012 KENNEDY, SMITH AND HILLS, INC.  
RS&H Architects-Engineers-Planners, Inc.  
1520 South Boulevard, Suite 200  
Charlotte, NC 28203  
Phone: 704-752-0610  
NC License No. F-0493 www.rsandh.com

**V&M**  
Vaughan & Melton  
Consulting Engineers

Asheville, NC 28800  
Knoxville, TN 37900  
Middleboro, MA 01800  
Spartanburg, SC 29500  
South Carolina, NC 28100



NAD 83 CORS

REVISIONS

\$FILE\$  
\$DATE\$

-L- HORIZONTAL CURVE DATA

PI Sta 27+43.15	PIs Sta 28+94.87	PIs Sta 34+77.26	PI Sta 40+73.85	PIs Sta 46+33.70
$\Delta = 3^{\circ}02'04.8"$ (RT)	$\Theta_s = 3^{\circ}19'11.0"$	$\Theta_s = 6^{\circ}37'47.8"$	$\Delta = 38^{\circ}29'20.0"$ (RT)	$\Theta_s = 6^{\circ}37'47.8"$
$D = 2^{\circ}27'32.6"$	$L_s = 270.00'$	$L_s = 324.00'$	$D = 4^{\circ}05'33.2"$	$L_s = 324.00'$
$L = 123.41'$	$LT = 180.03'$	$LT = 216.15'$	$L = 940.46'$	$LT = 216.15'$
$T = 61.72'$	$ST = 90.03'$	$ST = 108.14'$	$T = 488.75'$	$ST = 108.14'$
$R = 2,330.00'$			$R = 1,400.00'$	
$SE = 0.06$			$S = 0.06$	
$RO = 216$				

SEE SHEET 21 FOR -L- PROFILE