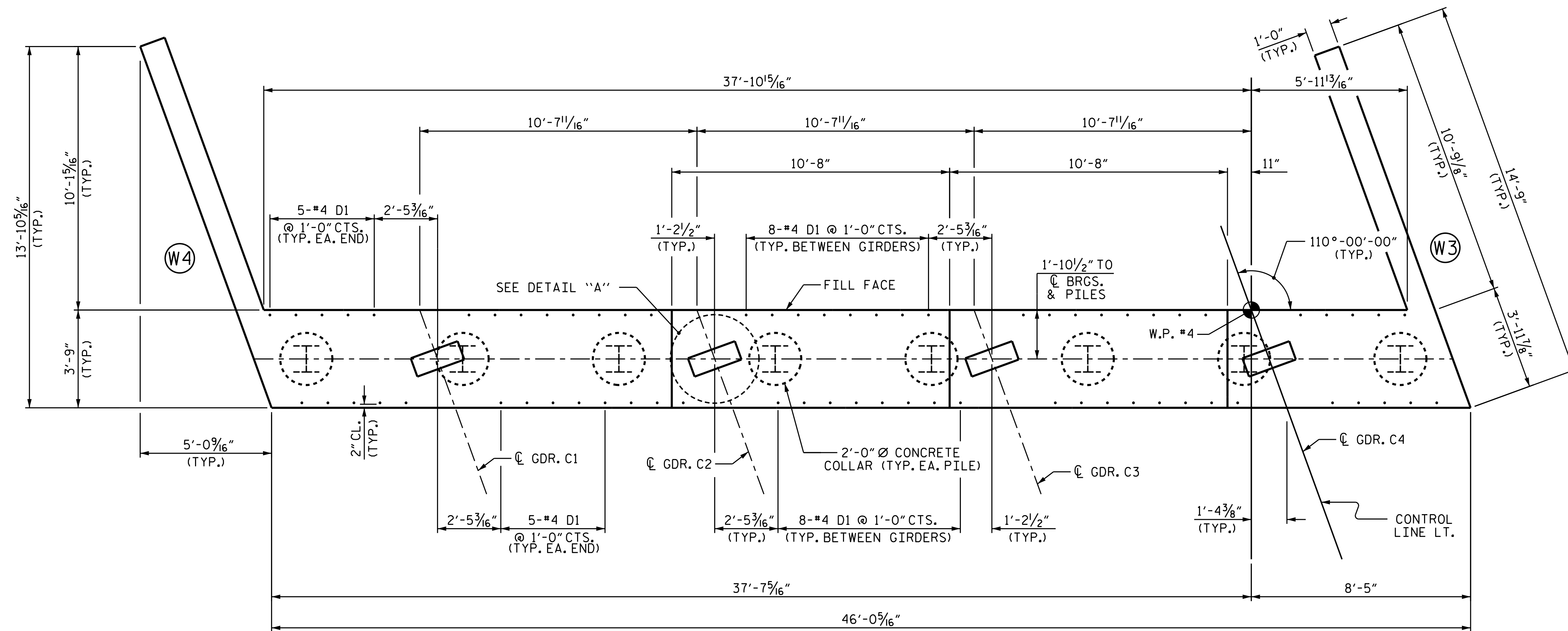


NOTES:

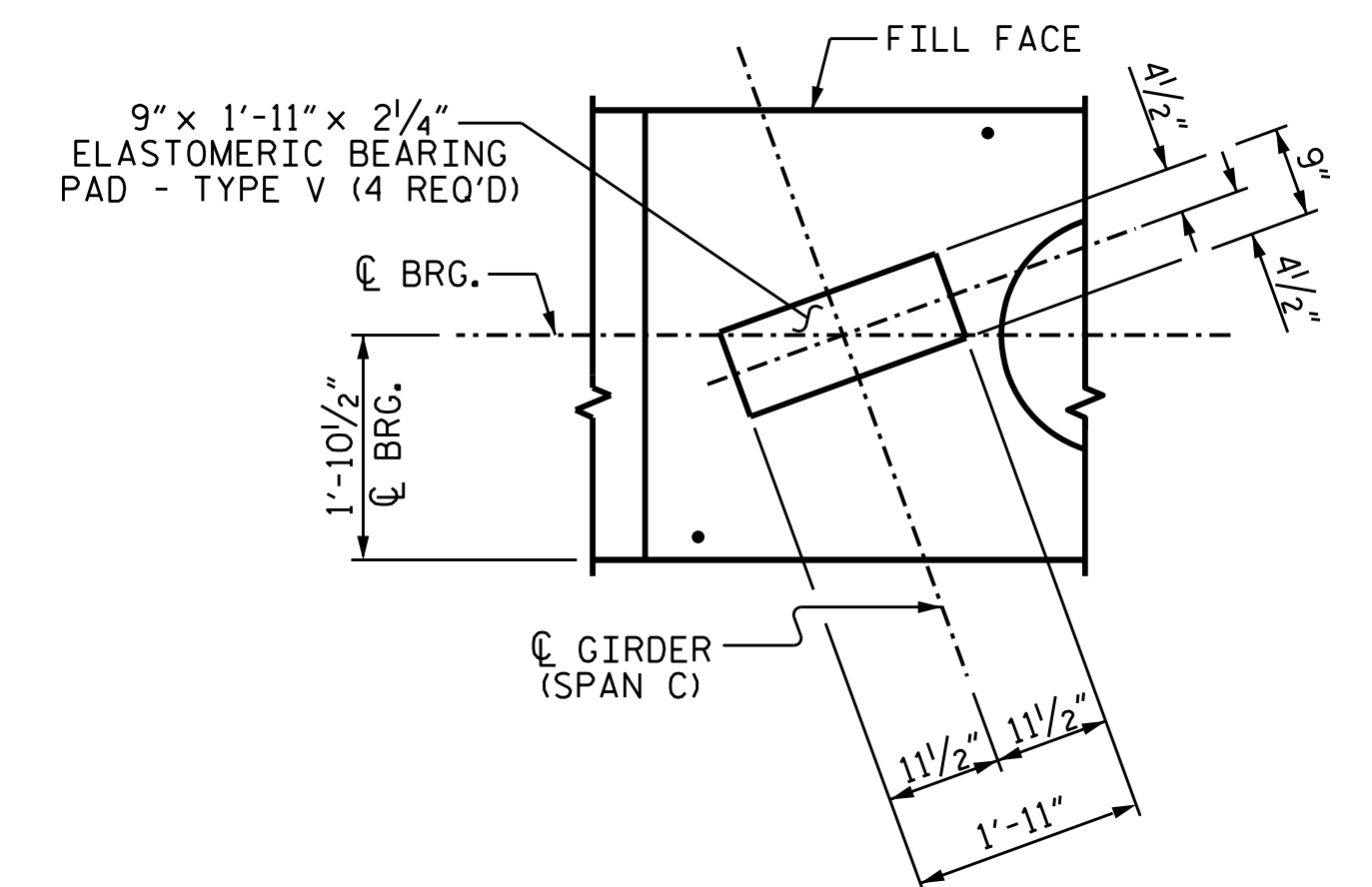
INSTALL THE 4" DIA. DRAIN PIPE THROUGH THE WING WALL AS REQUIRED FOR REINFORCED BRIDGE APPROACH FILLS. SEE THE ROADWAY PLANS. REINFORCING STEEL IN THE WING WALL MAY BE SHIFTED AS NECESSARY TO CLEAR THE DRAIN PIPE.

*4 D1 BARS MAY BE SHIFTED SLIGHTLY TO AVOID STIRRUPS IN CAP.

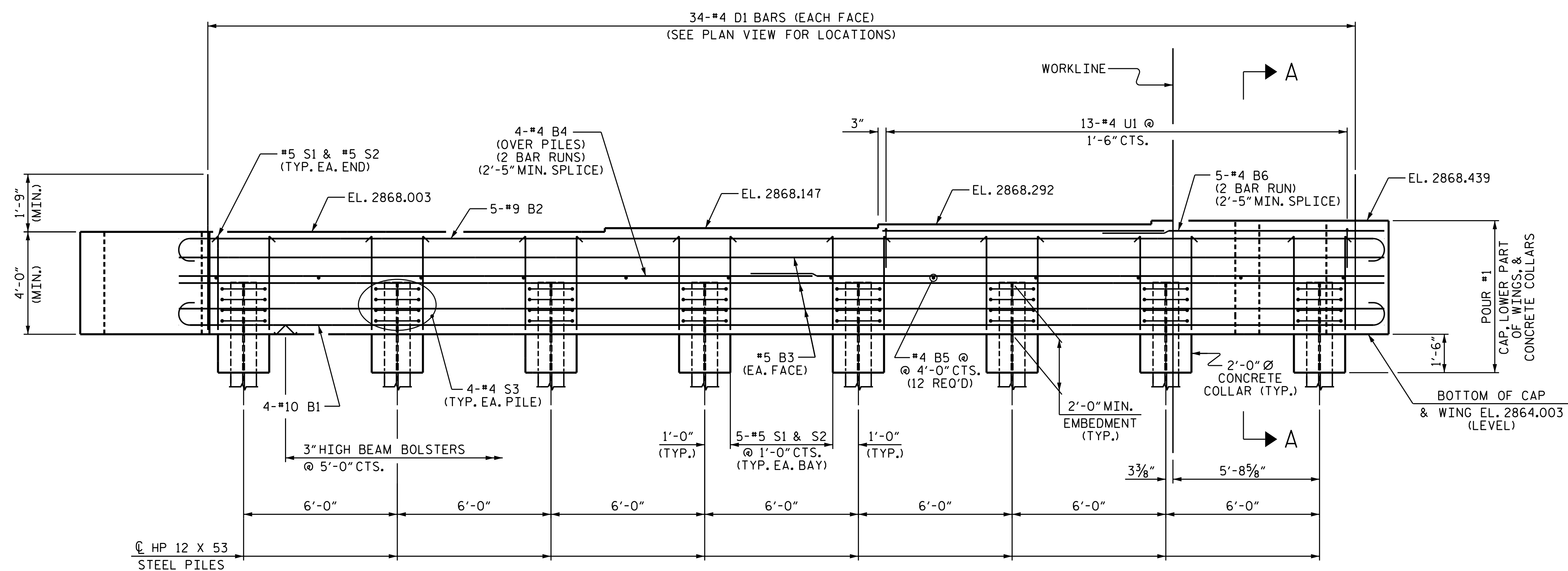
SEE SUPERSTRUCTURE SHEETS FOR UPPER PART OF INTEGRAL END BENT DETAILS.



PLAN



DETAIL "A"
(TYP. EA. GIRDER)



ELEVATION

PROJECT NO. R-2915B
ASHE COUNTY
 STATION: 242+67.42 -L-
 SHEET 1 OF 3

STATE OF NORTH CAROLINA
 DEPARTMENT OF TRANSPORTATION
 RALEIGH
 SUBSTRUCTURE
 INTEGRAL
 END BENT #2
 SBL

REVISIONS						SHEET NO.	
NO.	BY:	DATE:	NO.	BY:	DATE:	S04-30	
1			3			TOTAL SHEETS	
2			4			35	

DRAWN BY : T.J. KIRSCHBAUM DATE : 10/08/14
 CHECKED BY : E.E. DEETSREEK DATE : 11/10/14
 DESIGN ENGINEER OF RECORD : R.F. WERTMAN DATE : 11/13/14

PLANS PREPARED BY:
Gannett Fleming
 Excellence Delivered As Promised
 1121 Situs Court
 Suite 170
 Raleigh, NC 27606-4279
 (919) 859-4880
 NCLic. No. F-0270

