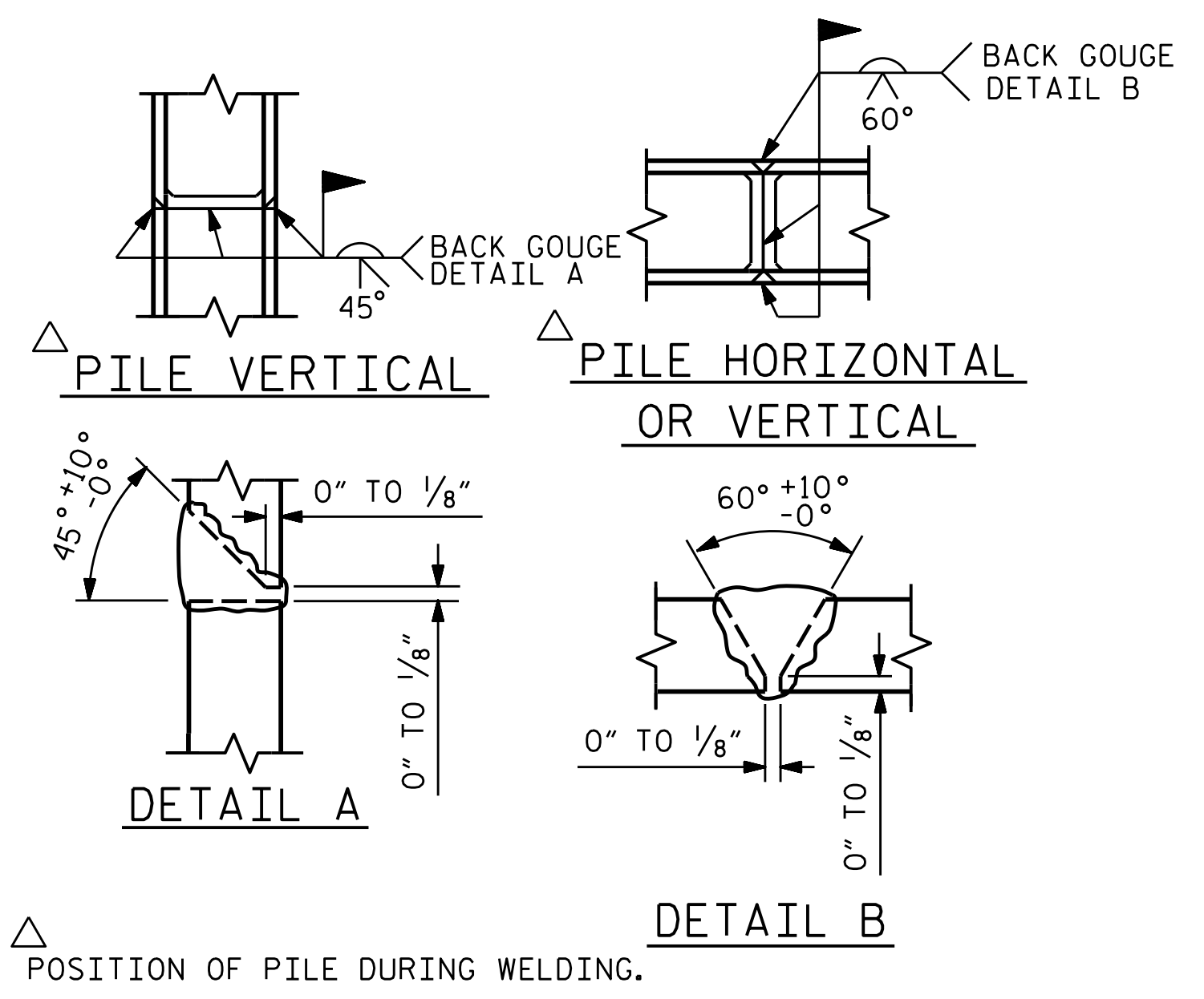


BAGGED STONE AND PIPE SHALL BE PLACED IMMEDIATELY AFTER COMPLETION OF END BENT EXCAVATION. PIPE MAY BE EITHER CONCRETE, CORRUGATED STEEL, CORRUGATED ALUMINUM ALLOY, OR CORRUGATED PLASTIC. PERFORATED PIPE WILL NOT BE ALLOWED.

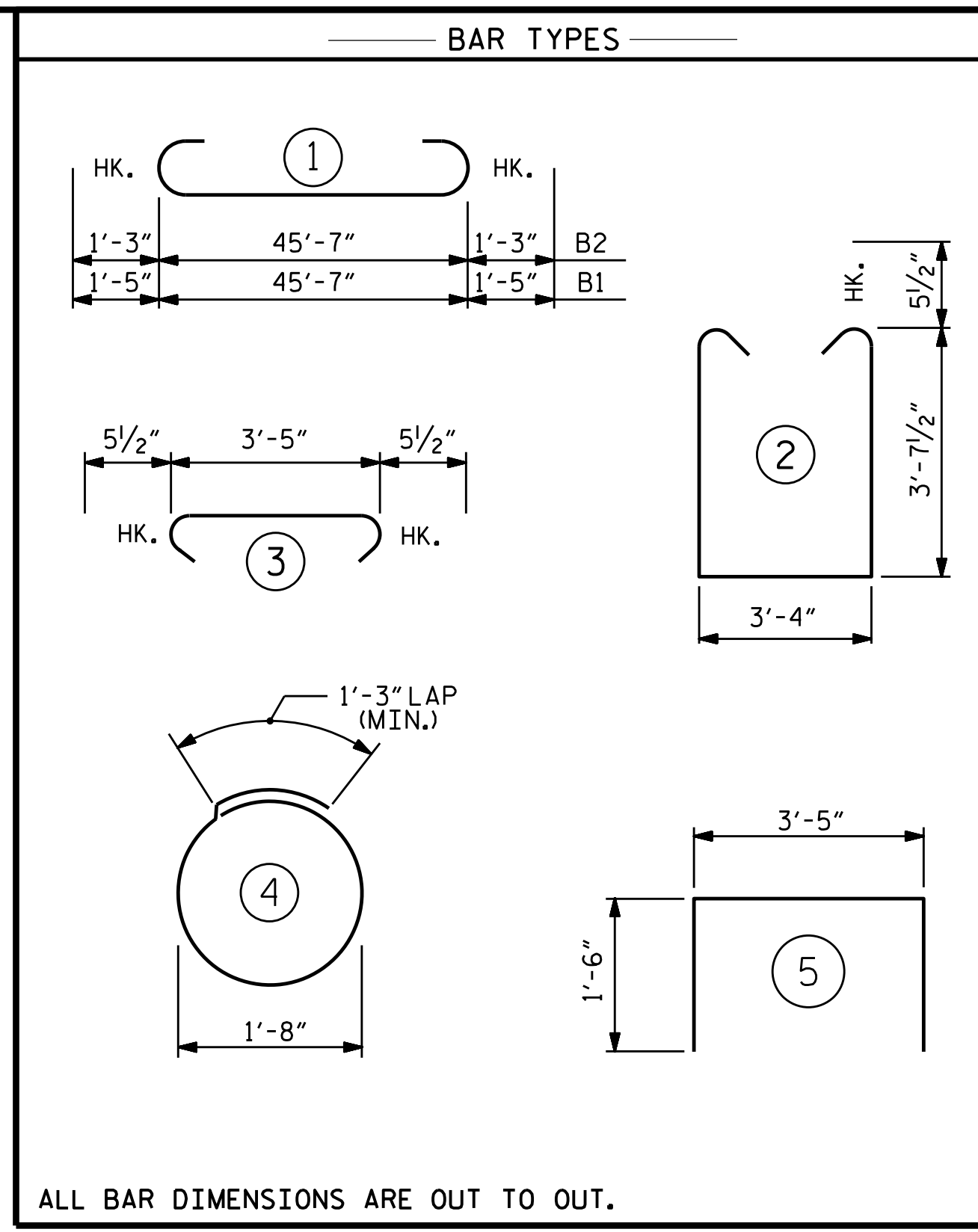
BAGGED STONE SHALL REMAIN IN PLACE UNTIL THE ENGINEER DIRECTS THAT IT BE REMOVED. THE CONTRACTOR SHALL REMOVE AND DISPOSE OF SILT ACCUMULATIONS AT BAGGED STONE WHEN SO DIRECTED BY THE ENGINEER. BAGS SHALL BE REMOVED AND REPLACED WHENEVER THE ENGINEER DETERMINES THAT THEY HAVE DETERIORATED AND LOST THEIR EFFECTIVENESS.

NO SEPARATE PAYMENT WILL BE MADE FOR THIS WORK AND THE ENTIRE COST OF THIS WORK SHALL BE INCLUDED IN THE UNIT CONTRACT PRICE BID FOR THE SEVERAL PAY ITEMS.

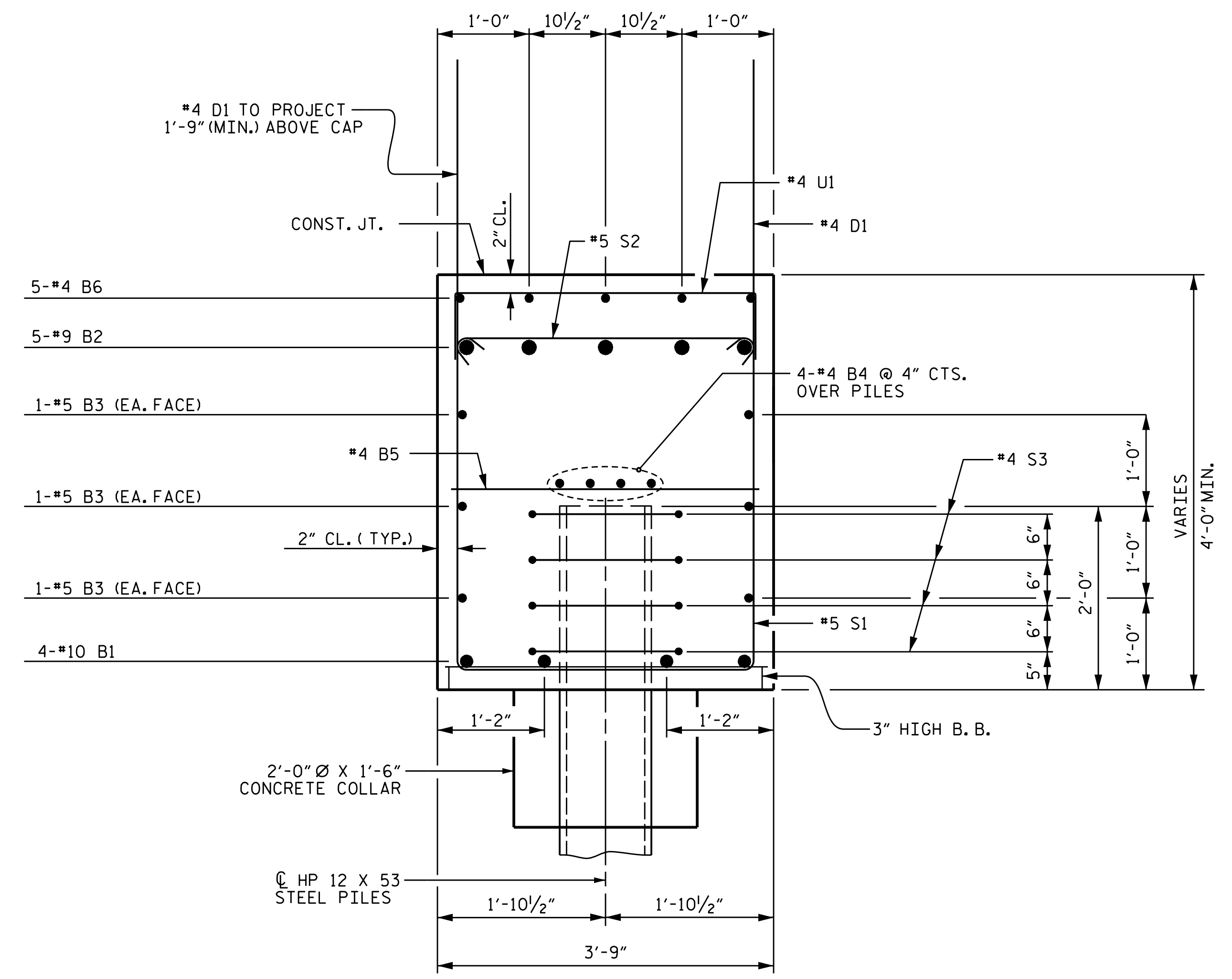
TEMPORARY DRAINAGE AT END BENT



PILE SPLICE DETAILS



BILL OF MATERIAL					
END BENT #1					
BAR	No.	SIZE	TYPE	LENGTH	WEIGHT
B1	4	#10	1	48'-5"	833
B2	5	#9	1	48'-1"	817
B3	6	#5	STR	45'-8"	286
B4	8	#4	STR	24'-1"	129
B5	12	#4	STR	3'-5"	27
B6	10	#4	STR	11'-0"	73
D1	68	#4	STR	6'-2"	280
H1	8	#5	STR	14'-1"	118
H2	8	#5	STR	14'-4"	120
H3	9	#5	STR	14'-8"	138
H4	9	#5	STR	14'-5"	135
S1	42	#5	2	11'-6"	504
S2	42	#5	3	4'-4"	190
S3	24	#4	4	6'-6"	104
U1	13	#4	5	6'-5"	56
V1	26	#5	STR	9'-6"	258
V2	26	#5	STR	10'-1"	273
REINFORCING STEEL					4341 LBS.
CLASS A CONCRETE					
POUR #1 (CAP, LOWER WINGS & COLLARS)					31.6 C.Y.
TOTAL					31.6 C.Y.
HP 12 X 53 STEEL PILES					
No. = 6					165 LIN. FT.



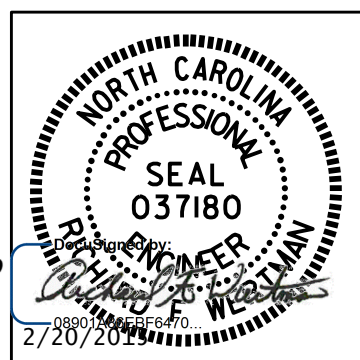
PROJECT NO. R-2915B
ASHE COUNTY
 STATION: 242+67.42 -L-
 SHEET 3 OF 3

STATE OF NORTH CAROLINA
 DEPARTMENT OF TRANSPORTATION
 RALEIGH
 SUBSTRUCTURE
 INTEGRAL
 END BENT #1
 SBL

DRAWN BY : T.J. KIRSCHBAUM DATE : 10/08/14
 CHECKED BY : E.E. DEETSCREEK DATE : 11/10/14
 DESIGN ENGINEER OF RECORD : R.F. WERTMAN DATE : 11/13/14

PLANS PREPARED BY:
Gannett Fleming
 Excellence Delivered As Promised

1121 Situs Court
 Suite 170
 Raleigh NC 27606-4279
 (919) 859-4880
 NCLic. No. F-0270



REVISIONS						SHEET NO.
NO.	BY:	DATE:	NO.	BY:	DATE:	S04-25
1			3			TOTAL SHEETS
2			4			35