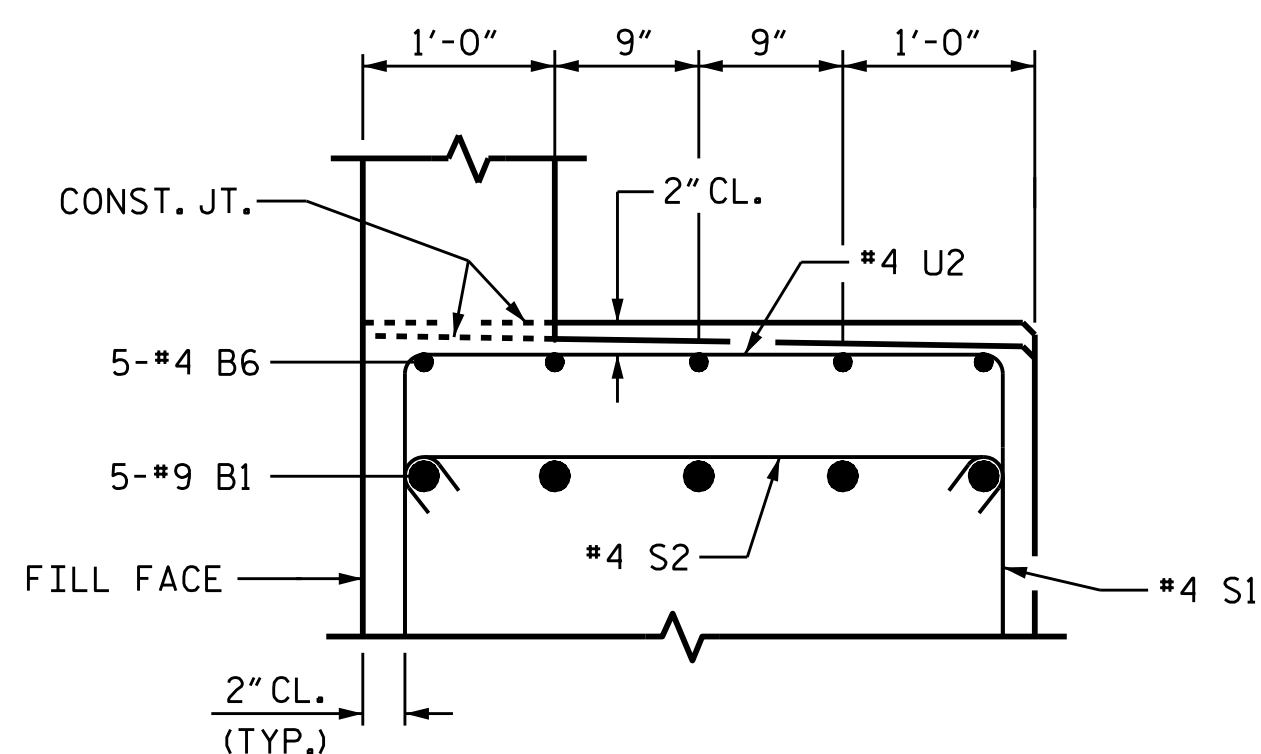


BAGGED STONE AND PIPE SHALL BE PLACED IMMEDIATELY AFTER COMPLETION OF END BENT EXCAVATION. PIPE MAY BE EITHER CONCRETE, CORRUGATED STEEL, CORRUGATED ALUMINUM ALLOY, OR CORRUGATED PLASTIC. PERFORATED PIPE WILL NOT BE ALLOWED.

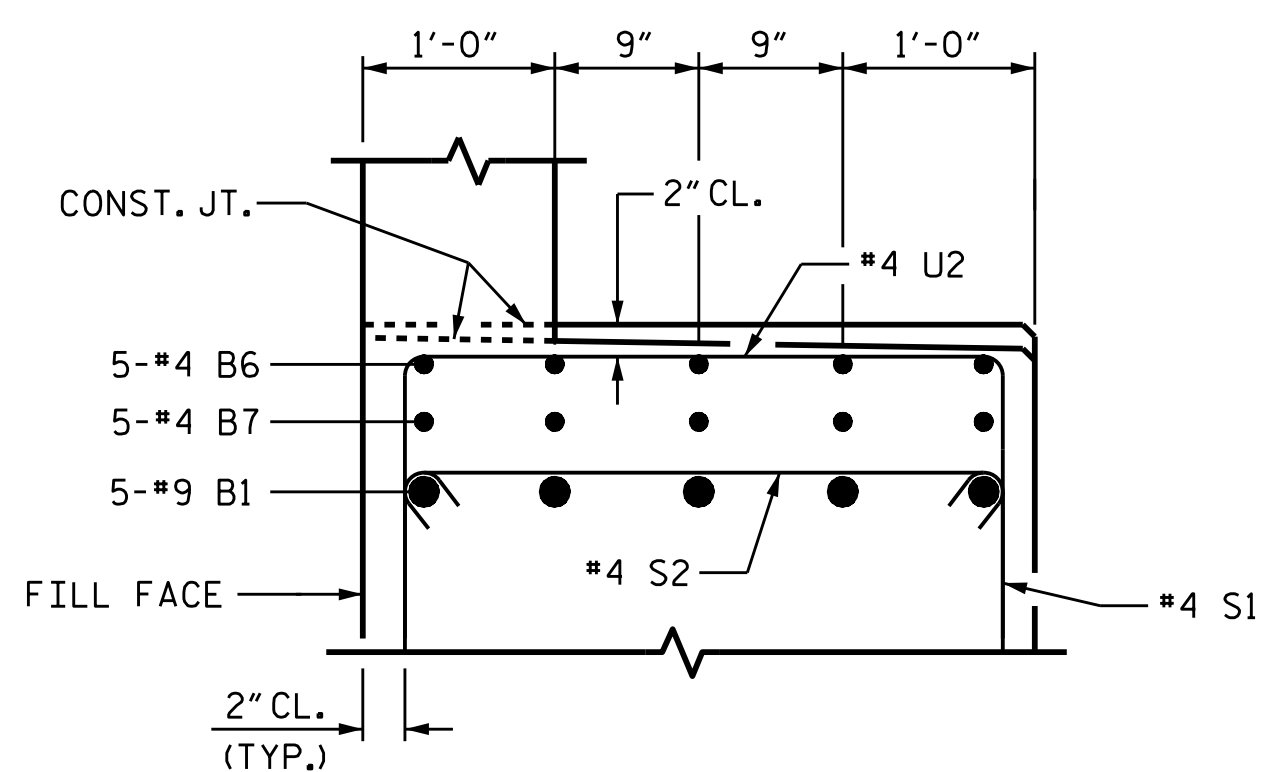
BAGGED STONE SHALL REMAIN IN PLACE UNTIL THE ENGINEER DIRECTS THAT IT BE REMOVED. THE CONTRACTOR SHALL REMOVE AND DISPOSE OF SILT ACCUMULATIONS AT BAGGED STONE WHEN SO DIRECTED BY THE ENGINEER. BAGS SHALL BE REMOVED AND REPLACED WHENEVER THE ENGINEER DETERMINES THAT THEY HAVE DETERIORATED AND LOST THEIR EFFECTIVENESS.

NO SEPARATE PAYMENT WILL BE MADE FOR THIS WORK AND THE ENTIRE COST OF THIS WORK SHALL BE INCLUDED IN THE UNIT CONTRACT PRICE BID FOR THE SEVERAL PAY ITEMS.

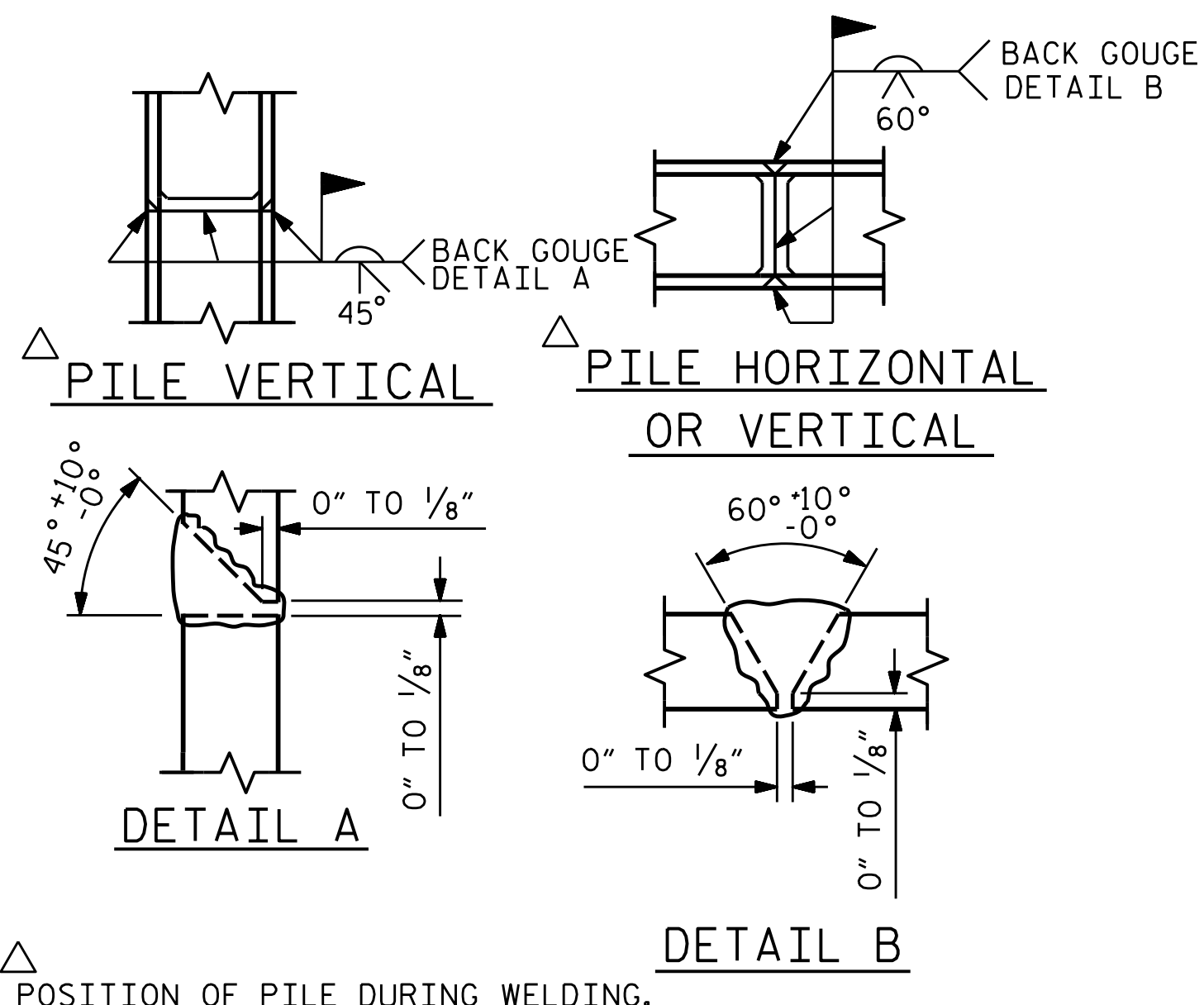
TEMPORARY DRAINAGE AT END BENT



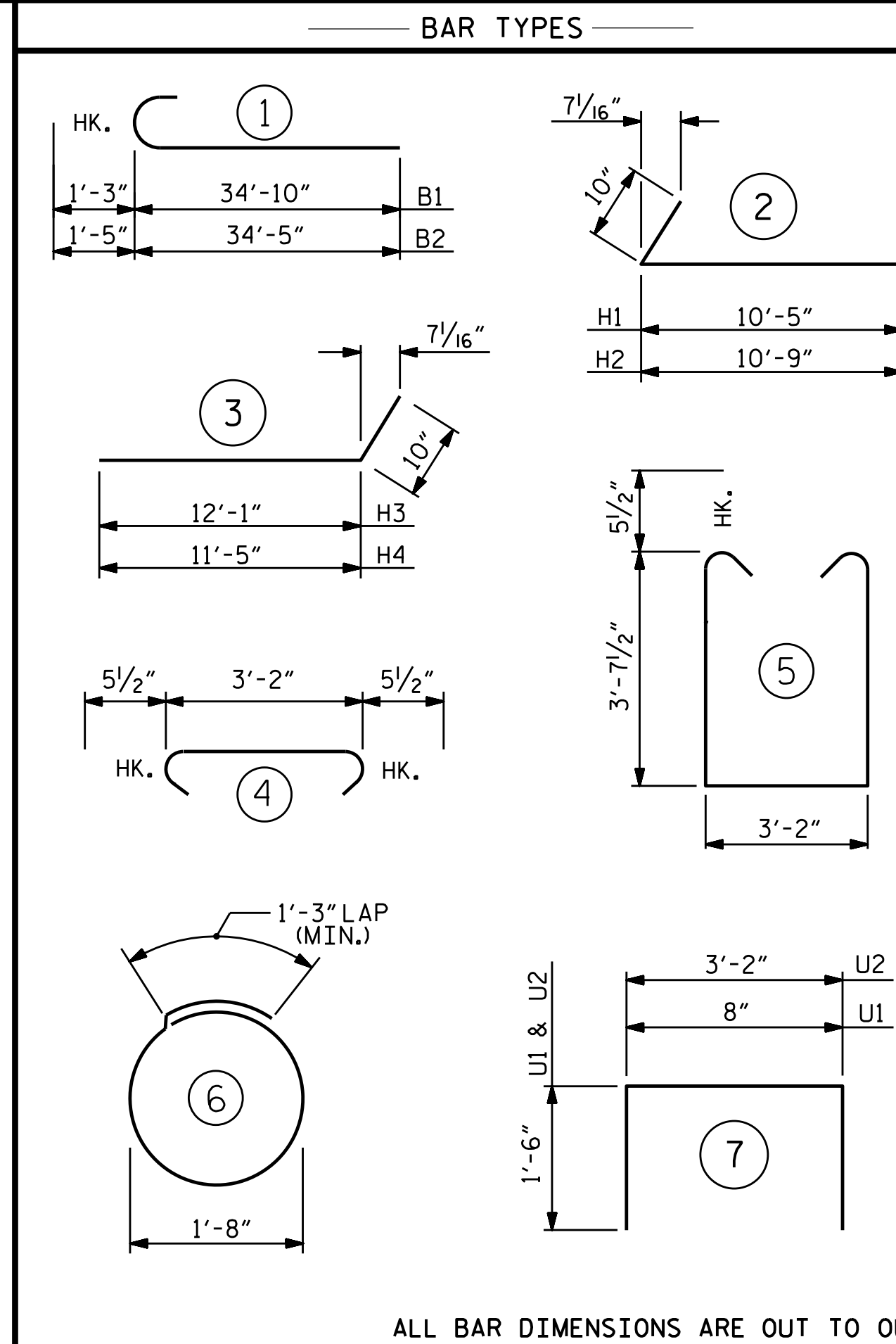
PARTIAL SECTION B-B
(TYP. @ BRG. C2 & C3)



PARTIAL SECTION C-C
(TYP. @ BRG. C1)



PILE SPLICE DETAILS
POSITION OF PILE DURING WELDING.



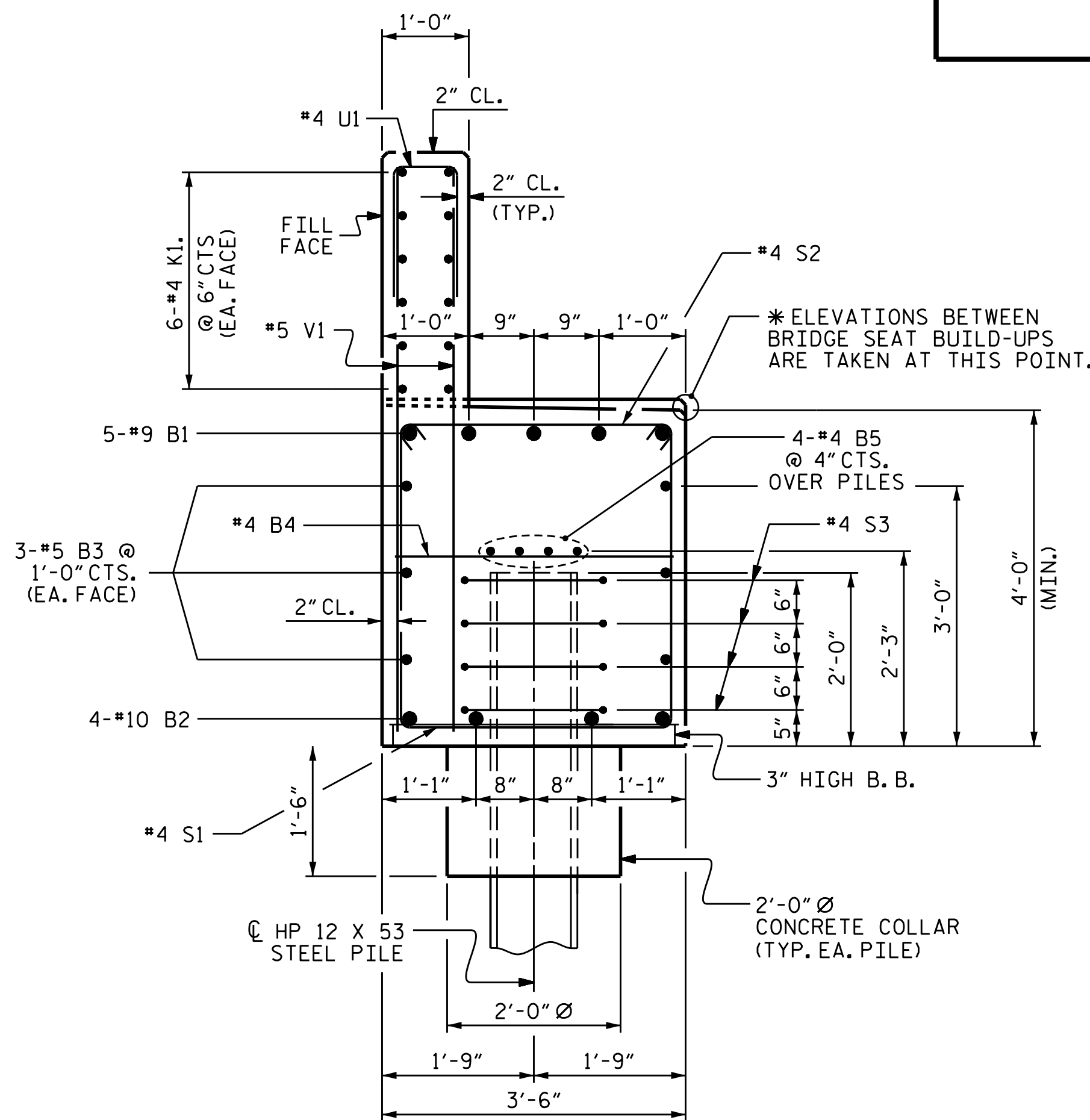
ALL BAR DIMENSIONS ARE OUT TO OUT.

BILL OF MATERIAL

END BENT #2

BAR	No.	SIZE	TYPE	LENGTH	WEIGHT
B1	10	#9	1	36'-1"	1227
B2	8	#10	1	35'-10"	1234
B3	12	#5	STR	31'-11"	399
B4	15	#4	STR	3'-2"	32
B5	12	#4	STR	21'-11"	176
B6	15	#4	STR	2'-0"	20
B7	10	#4	STR	12'-10"	86
H1	17	#5	2	11'-3"	199
H2	17	#5	2	11'-7"	205
H3	17	#5	3	12'-11"	229
H4	17	#5	3	12'-3"	217
K1	36	#4	STR	21'-11"	527
K2	3	#4	STR	3'-6"	7
K3	9	#4	STR	3'-7"	22
S1	68	#4	5	11'-4"	515
S2	68	#4	4	4'-1"	185
S3	28	#4	6	6'-6"	122
U1	55	#4	7	3'-8"	135
U2	21	#4	7	6'-2"	87
V1	108	#5	STR	6'-7"	742
V2	30	#4	STR	8'-9"	175
V3	32	#4	STR	8'-3"	176

REINFORCING STEEL	6,717 LBS.
CLASS A CONCRETE	
POUR #1 (CAP, LOWER WINGS & COLLARS)	36.9 C.Y.
POUR #2 (UPPER WINGS & BACKWALL)	11.1 C.Y.
TOTAL	48.0 C.Y.
HP 12 X 53 STEEL PILES	
No. = 7	140 LIN. FT.



SECTION A-A

PROJECT NO. R-2915B
ASHE COUNTY
STATION: 234+19.20 -L-

SHEET 3 OF 3

STATE OF NORTH CAROLINA
DEPARTMENT OF TRANSPORTATION
RALEIGH

SUBSTRUCTURE
END BENT #2
NBL

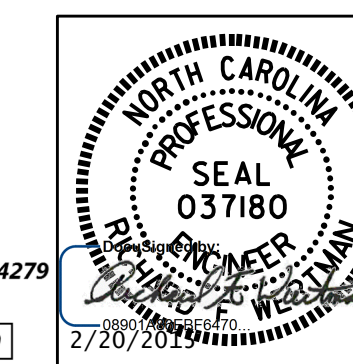
REVISIONS

NO.	BY:	DATE:	NO.	BY:	DATE:
1			3		
2			4		

SHEET NO.	S03-27
TOTAL SHEETS	30

DRAWN BY : T.J. KIRSCHBAUM DATE : 08/28/14
CHECKED BY : E.E. DEETSREEK DATE : 09/04/14
DESIGN ENGINEER OF RECORD : R.F. WERTMAN DATE : 09/05/14

PLANS PREPARED BY:
Gannett Fleming
Excellence Delivered As Promised
1121 Satus Court
Suite 170
Raleigh, NC 27606-4279
(919) 859-4880
NCLic. No. F-0270



STR. NO. 3