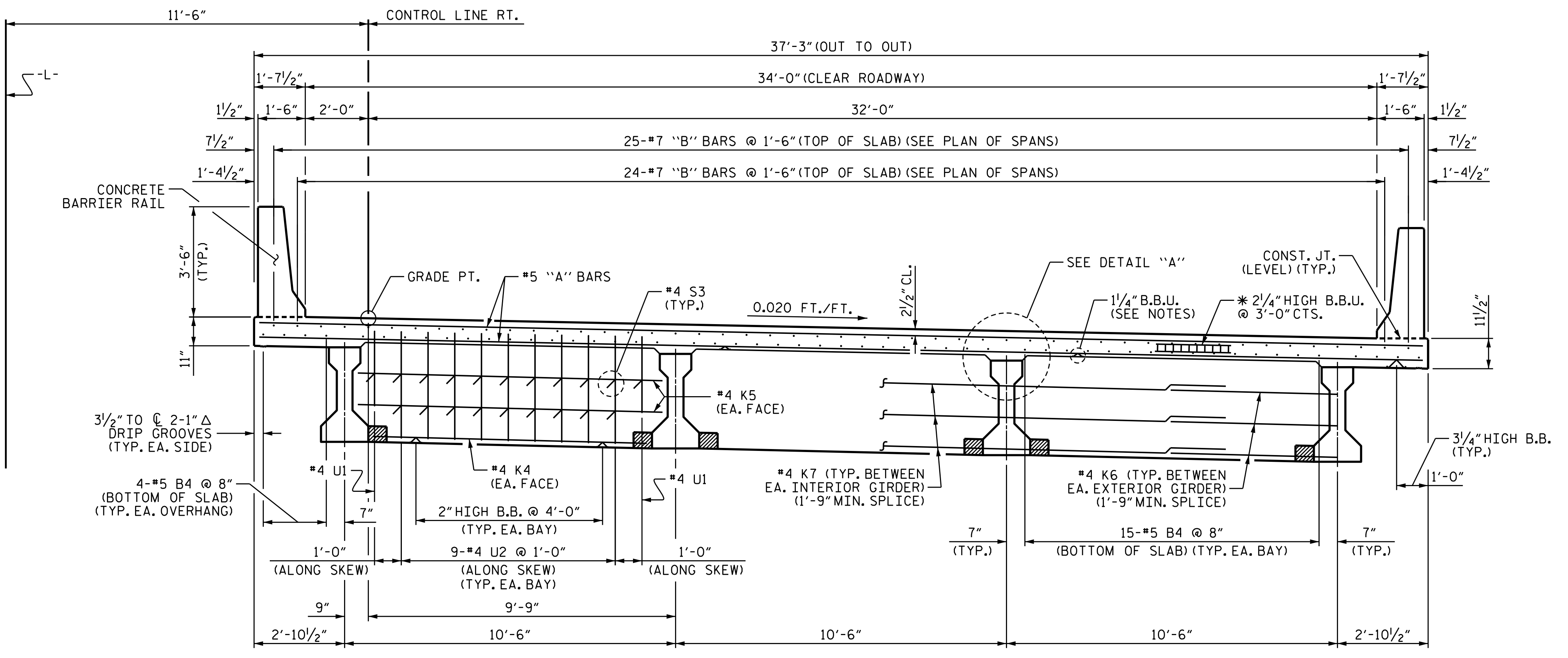
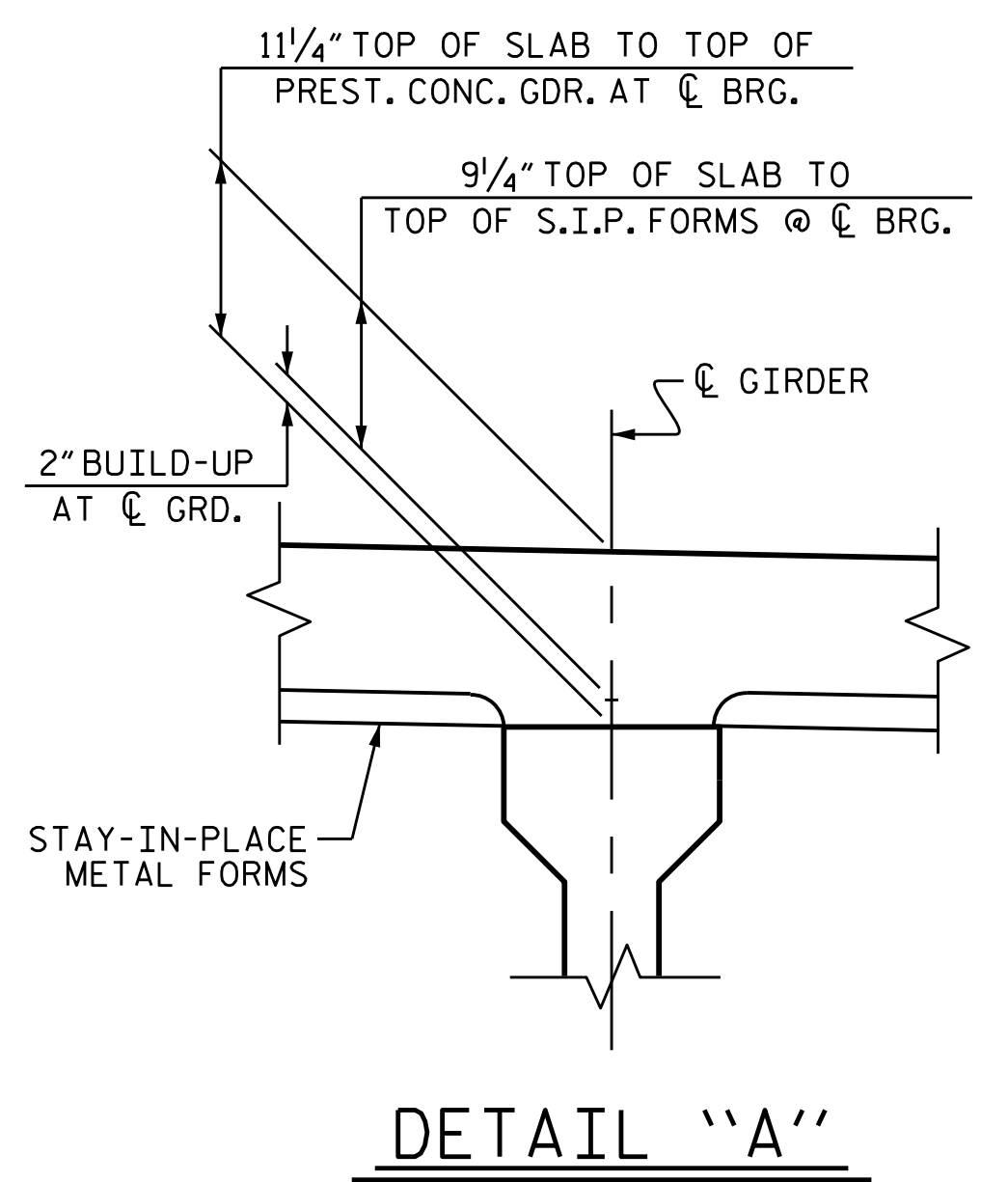


AT END BENT DIAPHRAGM AT INTERMEDIATE DIAPHRAGM
TYPICAL SECTION



TYPICAL SECTION @ BENT DIAPHRAGM

NOTES:
 LONGITUDINAL STEEL MAY BE SHIFTED SLIGHTLY, AS NECESSARY, TO AVOID INTERFERENCE WITH STIRRUPS IN PRESTRESSED CONCRETE GIRDERS.
 PREVIOUSLY CAST CONCRETE IN A CONTINUOUS UNIT SHALL HAVE ATTAINED A MINIMUM COMPRESSIVE STRENGTH OF 3,000 PSI BEFORE ADDITIONAL CONCRETE IS CAST IN THE UNIT.
 BARRIER RAIL IN A CONTINUOUS UNIT SHALL NOT BE CAST UNTIL ALL SLAB CONCRETE IN THE UNIT HAS BEEN CAST AND HAS REACHED A MINIMUM COMPRESSIVE STRENGTH OF 3,000 PSI.
 PROVIDE 1/4" HIGH BEAM BOLSTERS UPPER AT 4'-0" CTS. ATOP THE METAL STAY-IN-PLACE FORMS TO SUPPORT THE BOTTOM MAT OF "A" BARS. WHEN USING REMOVABLE FORMS, PROVIDE CONTINUOUS HIGH CHAIRS FOR METAL DECK (C.H.C.M.) @ 4'-0" CTS. WITH A HEIGHT TO SUPPORT THE BOTTOM MAT OF "A" BARS A CLEAR DISTANCE OF 2 1/2" ABOVE THE TOP OF THE REMOVABLE FORM.
 * USE THIS SIZE BAR SUPPORT IN THE AREAS WITH #4 "B" BARS. FOR OTHER AREAS WITH #6 "B" BARS, USE THE BAR SUPPORT AS SHOWN IN TYPICAL SECTION AT BENT.



DETAIL "A"

PROJECT NO. R-2915B
ASHE COUNTY
 STATION: 234+19.20 -L-
 SHEET 1 OF 2

STATE OF NORTH CAROLINA
 DEPARTMENT OF TRANSPORTATION
 RALEIGH

SUPERSTRUCTURE
TYPICAL SECTION
 NBL

DRAWN BY : T.J. KIRSCHBAUM DATE : 4/14/14
 CHECKED BY : R.F. WERTMAN DATE : 4/25/14
 DESIGN ENGINEER OF RECORD : R.F. WERTMAN DATE : 4/25/14

PLANS PREPARED BY:
Gannett Fleming
 Excellence Delivered As Promised

1121 Situs Court
 Suite 170
 Raleigh, NC 27606-4279
 (919) 859-4880
 NCLic. No. F-0270



REVISIONS		SHEET NO.	
NO.	BY:	DATE:	NO.
1			3
2			4

TOTAL SHEETS: 30