

PROJECT REFERENCE NO. <i>R-2915B</i>	SHEET NO. <i>EC-20/CONST II</i>
RW SHEET NO.	
ROADWAY DESIGN ENGINEER	HYDRAULICS ENGINEER
CDM Smith Camp Dresser & McKee 8425 Glenwood Avenue Suite 300 Raleigh, NC 27612-3229 NC CDA No. F-5412	SUNGATE DESIGN GROUP, P.A. 110 JONES FRANKLIN ROAD HARRISBORO, NORTH CAROLINA 27533 NC CDA No. C-9890

INSTALL MATTING FOR EROSION CONTROL IN THE PROPOSED DITCH LINE AND CUT SLOPE

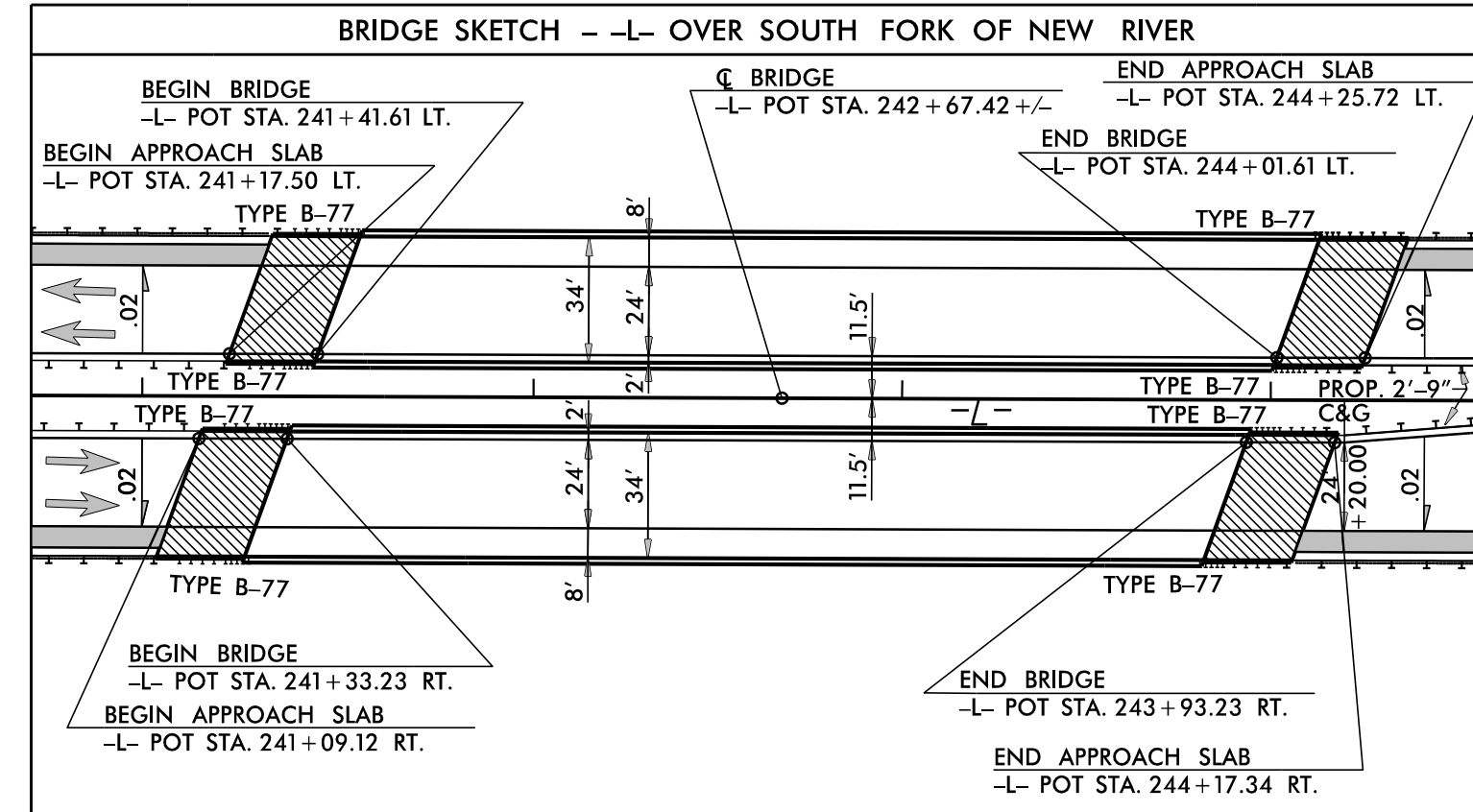
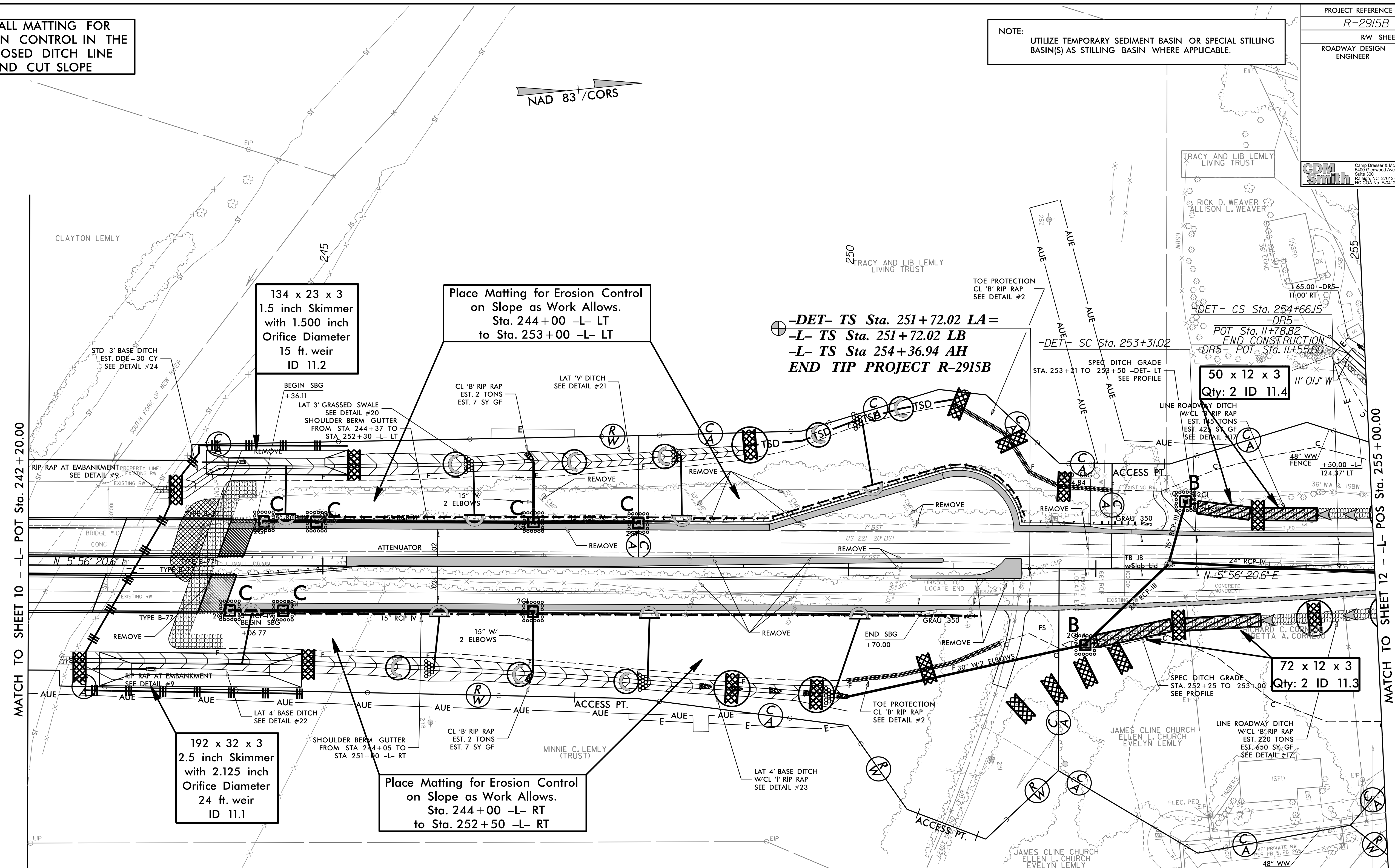
NOTE: UTILIZE TEMPORARY SEDIMENT BASIN OR SPECIAL STILLING BASIN(S) AS STILLING BASIN WHERE APPLICABLE.

NAD 83 / CORS

01/31/14 - RW REVISIONS: UPDATED PROPERTY OWNER NAME ON PARCEL 41. - PJS
 03/23/14 - RW REVISIONS: REVISED PROPOSED RW ON PARCELS 41, 43, 44, 45, 46, 53 AND 55; ADDED AUE ON PARCELS 42 AND 44; REVISED CA LIMITS TO PROVIDE DRIVEWAY ACCESS ON PARCEL 43; ADDED PARCEL NUMBER 55. - DJC
 01/05/15 - RW REVISIONS: UPDATED PROPERTY OWNER NAME ON PARCEL 39 AND 46. - PJS
 04/10/15 - RW REVISIONS: ADDED A TCE ON PARCEL 44. - CIT
 05/20/15 - RW REVISIONS: UPDATED PROPERTY OWNER NAMES AND DEED REFERENCES ON PARCEL 42 AND 47; REVISED THE FULL CA LIMITS FROM -L- STA. 257+50.00 TO STA. 255+15.00 LT.; AND ADDED AND ACCESS POINT FROM -L- STA. 255+15.00 TO STA. 255+65.00 LT. ON PARCELS 42. - DJC

MATCH TO SHEET 10 -L- POT Sta. 242+20.00

MATCH TO SHEET 12 -L- POS Sta. 255+00.00



SEE SHEET 16 FOR -L- PROFILE
 SEE SHEET 16 FOR -DET- PROFILE
 SEE SHEET 2B-2 FOR U-TURN BULB DETAILS
 SEE SHEETS 2D-1 THRU 2D-3 FOR DRAINAGE DETAILS
 SEE SHEETS S-1 THRU S-? FOR STRUCTURE PLANS

SEE SHEET 16 FOR -L- PROFILE
 SEE SHEET 16 FOR -DET- PROFILE
 SEE SHEET 2B-2 FOR U-TURN BULB DETAILS
 SEE SHEETS 2D-1 THRU 2D-3 FOR DRAINAGE DETAILS
 SEE SHEETS S-1 THRU S-? FOR STRUCTURE PLANS