

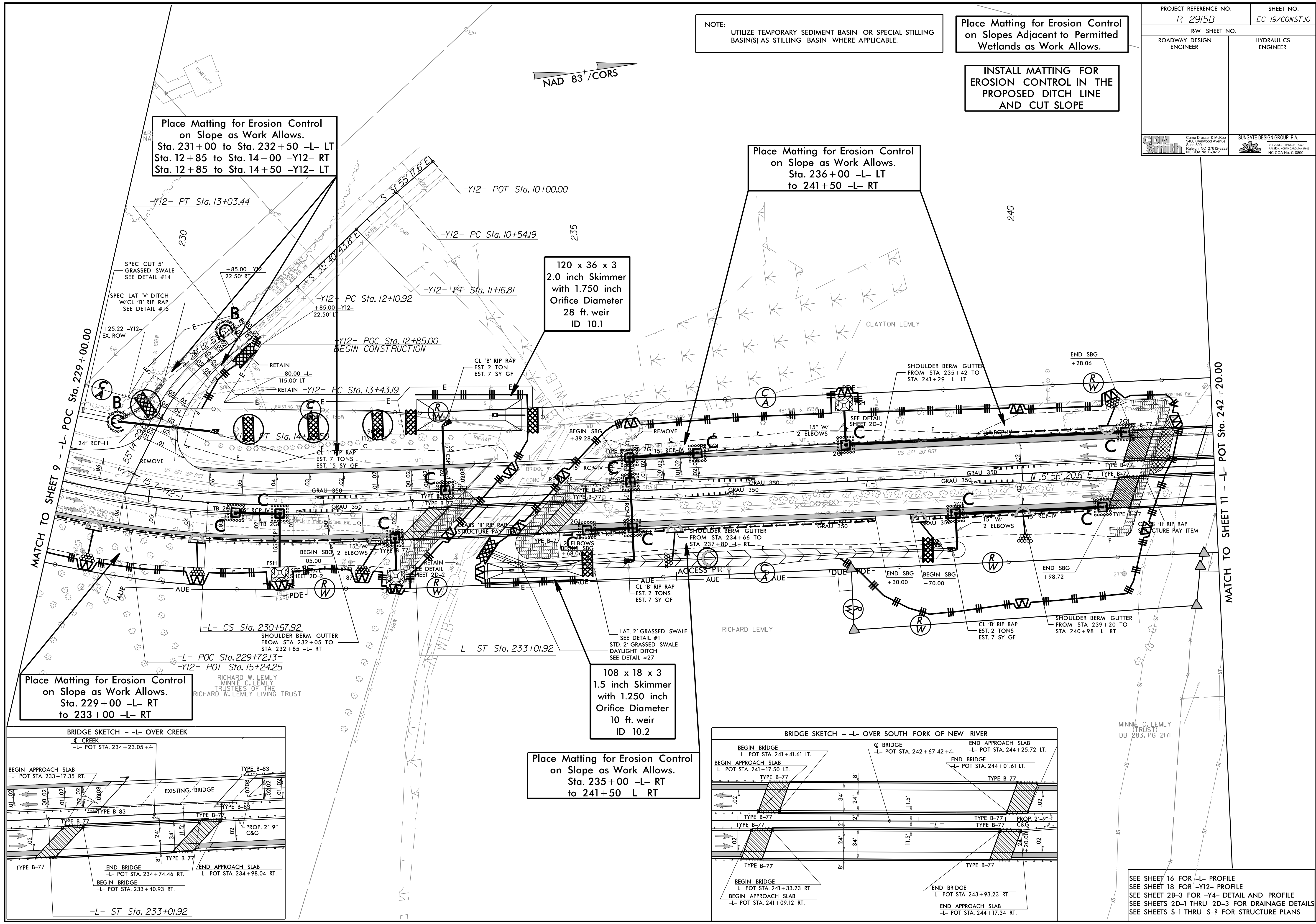
010515 - RW REVISIONS: UPDATED PROPERTY OWNER NAME ON PARCEL 39. - PJS

NOTE: UTILIZE TEMPORARY SEDIMENT BASIN OR SPECIAL STILLING BASIN(S) AS STILLING BASIN WHERE APPLICABLE.

Place Matting for Erosion Control on Slopes Adjacent to Permitted Wetlands as Work Allows.

INSTALL MATTING FOR EROSION CONTROL IN THE PROPOSED DITCH LINE AND CUT SLOPE

PROJECT REFERENCE NO. <i>R-2915B</i>	SHEET NO. <i>EC-19/CONST.10</i>
RW SHEET NO.	
ROADWAY DESIGN ENGINEER	HYDRAULICS ENGINEER
CDM Smith Camp Dresser & McKee 5425 Glenwood Avenue Suite 500 Raleigh, NC 27612-3229 NC CDA No. F-5412	SUNGATE DESIGN GROUP, P.A. 110 JONES FARM ROAD HILLSBORO, NC 27541 NC CDA No. G-3890

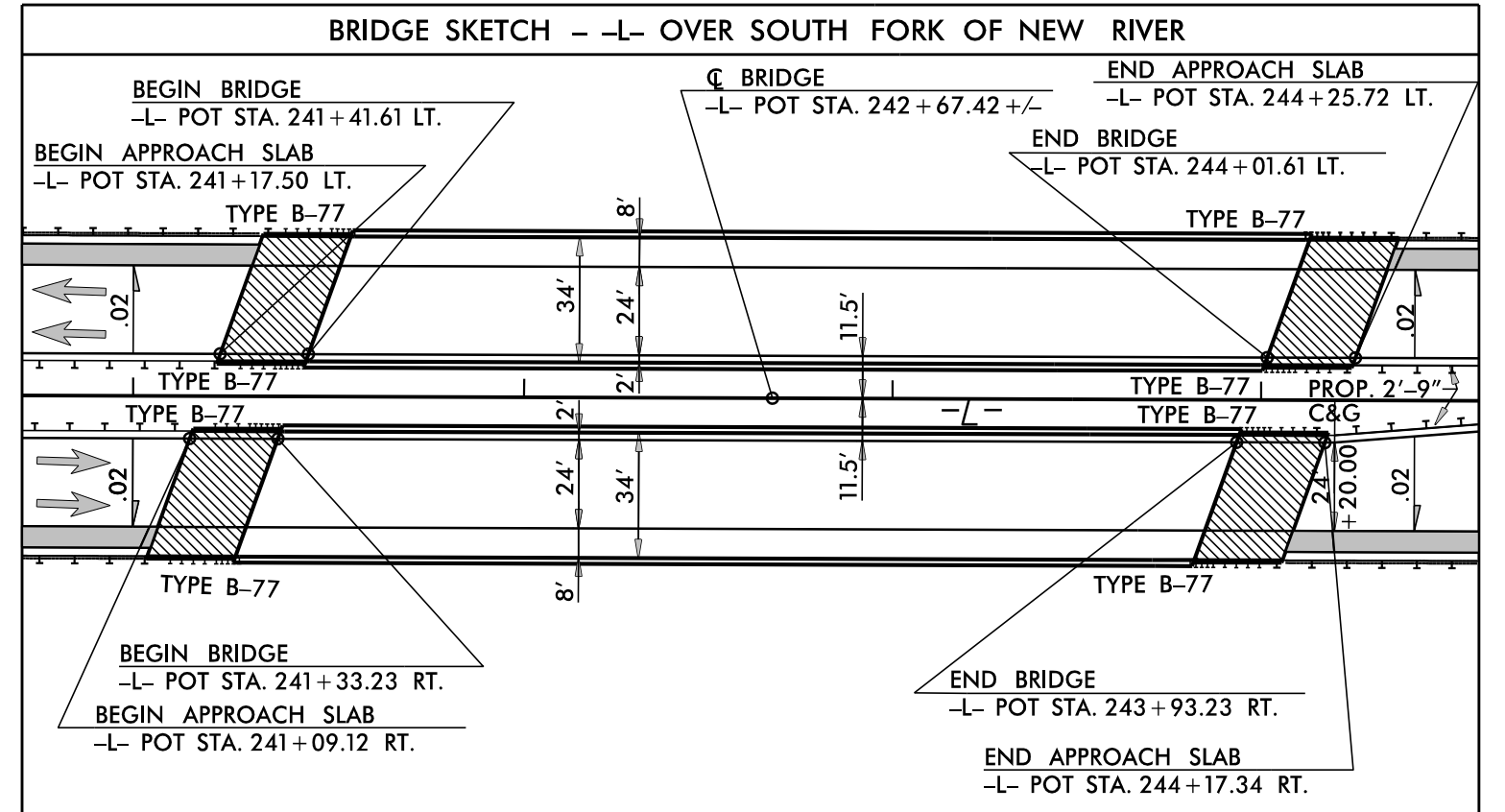
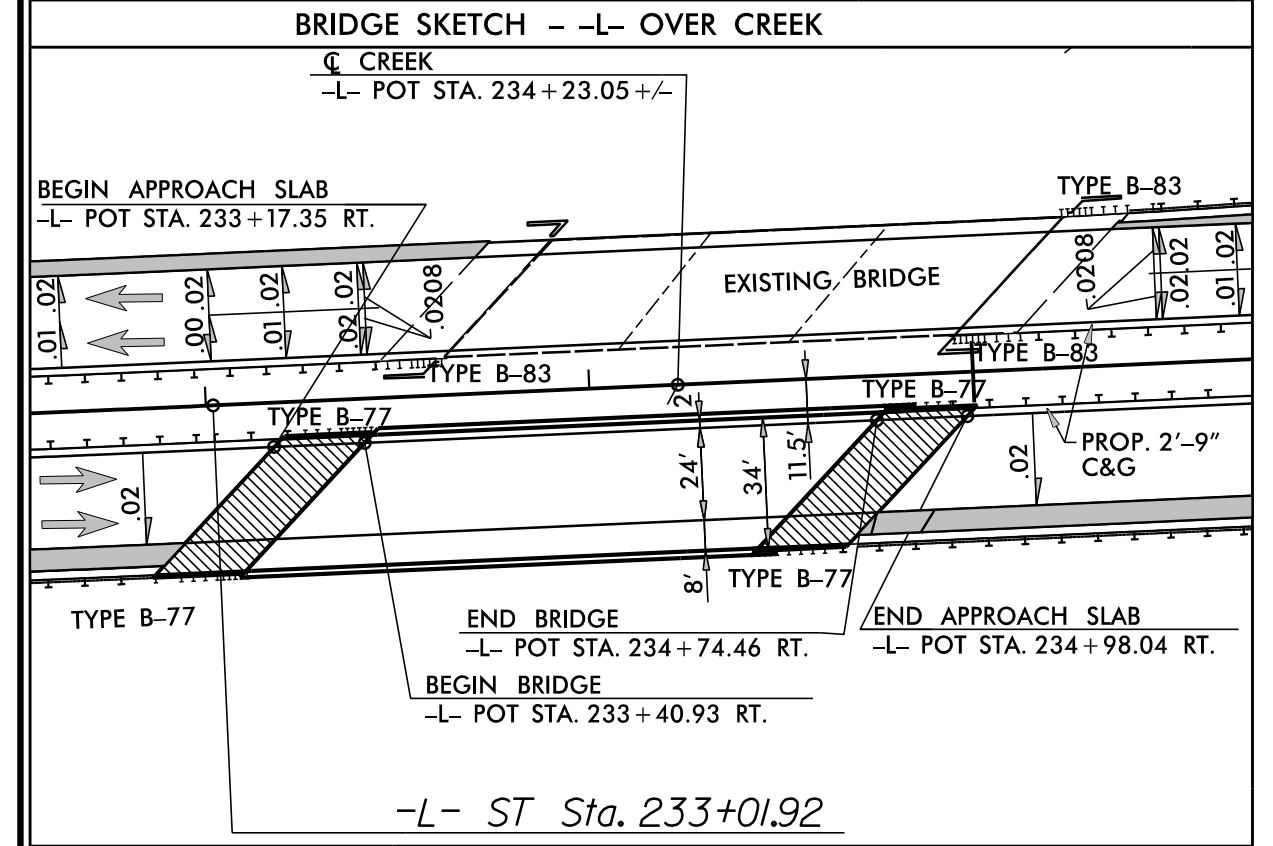


Place Matting for Erosion Control on Slope as Work Allows. Sta. 231+00 to Sta. 232+50 -L- LT Sta. 12+85 to Sta. 14+00 -Y12- RT Sta. 12+85 to Sta. 14+50 -Y12- LT

Place Matting for Erosion Control on Slope as Work Allows. Sta. 236+00 -L- LT to 241+50 -L- RT

Place Matting for Erosion Control on Slope as Work Allows. Sta. 229+00 -L- RT to 233+00 -L- RT

Place Matting for Erosion Control on Slope as Work Allows. Sta. 235+00 -L- RT to 241+50 -L- RT



SEE SHEET 16 FOR -L- PROFILE  
SEE SHEET 18 FOR -Y12- PROFILE  
SEE SHEET 2B-3 FOR -Y4- DETAIL AND PROFILE  
SEE SHEETS 2D-1 THRU 2D-3 FOR DRAINAGE DETAILS  
SEE SHEETS S-1 THRU S-9 FOR STRUCTURE PLANS