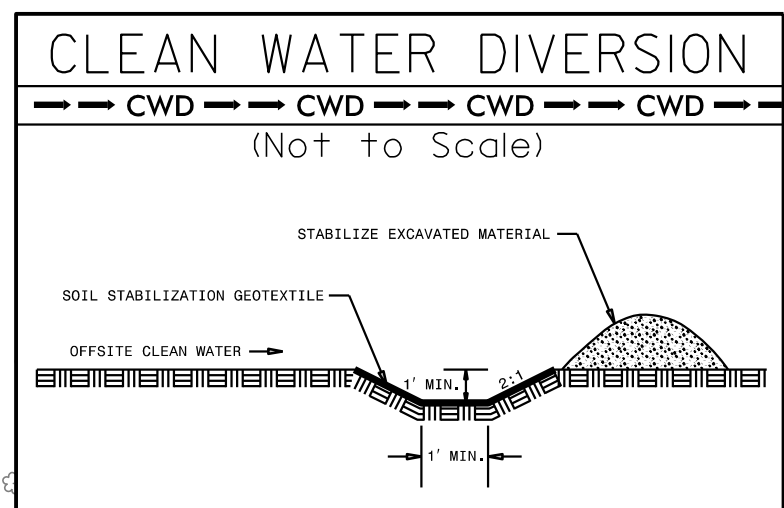


PROJECT REFERENCE NO.	SHEET NO.
R-2915B	EC-18/CONST.09
RW SHEET NO.	
ROADWAY DESIGN ENGINEER	HYDRAULICS ENGINEER
CDM Smith	SUNGATE DESIGN GROUP, P.A.

Place Matting for Erosion Control on Slopes Adjacent to Permitted Wetlands as Work Allows.

INSTALL MATTING FOR EROSION CONTROL IN THE PROPOSED DITCH LINE AND CUT SLOPE



70 x 16 x 3  
1.5 inch Skimmer  
with 0.875 inch  
Orifice Diameter  
8 ft. weir  
ID 9.4

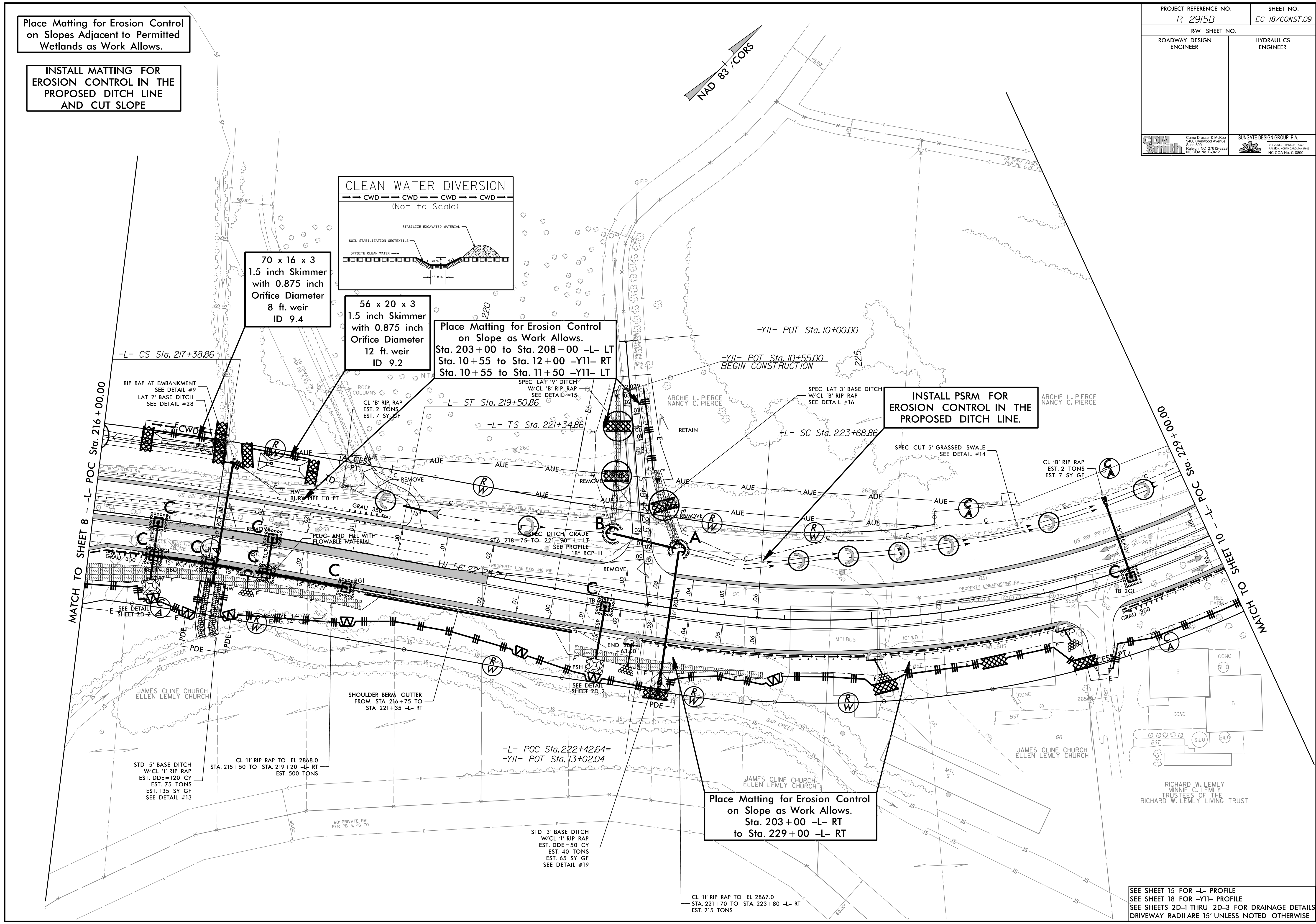
56 x 20 x 3  
1.5 inch Skimmer  
with 0.875 inch  
Orifice Diameter  
12 ft. weir  
ID 9.2

Place Matting for Erosion Control on Slope as Work Allows.  
Sta. 203+00 to Sta. 208+00 -L- LT  
Sta. 10+55 to Sta. 12+00 -Y11- RT  
Sta. 10+55 to Sta. 11+50 -Y11- LT

INSTALL PSRM FOR EROSION CONTROL IN THE PROPOSED DITCH LINE.

Place Matting for Erosion Control on Slope as Work Allows.  
Sta. 203+00 -L- RT  
to Sta. 229+00 -L- RT

060314 - RW REVISIONS: ADDED PDE FROM -L- STATION 222+38.00 TO 222+88.00 RIGHT ON PARCEL 36. - JBW  
09/08/14 - RW REVISIONS: REVISED DRIVEWAY OPENING FROM 11' +/- TO 30' +/- ON PARCEL 38. - DJC



SEE SHEET 15 FOR -L- PROFILE  
SEE SHEET 18 FOR -Y11- PROFILE  
SEE SHEETS 2D-1 THRU 2D-3 FOR DRAINAGE DETAILS  
DRIVEWAY RADII ARE 15' UNLESS NOTED OTHERWISE