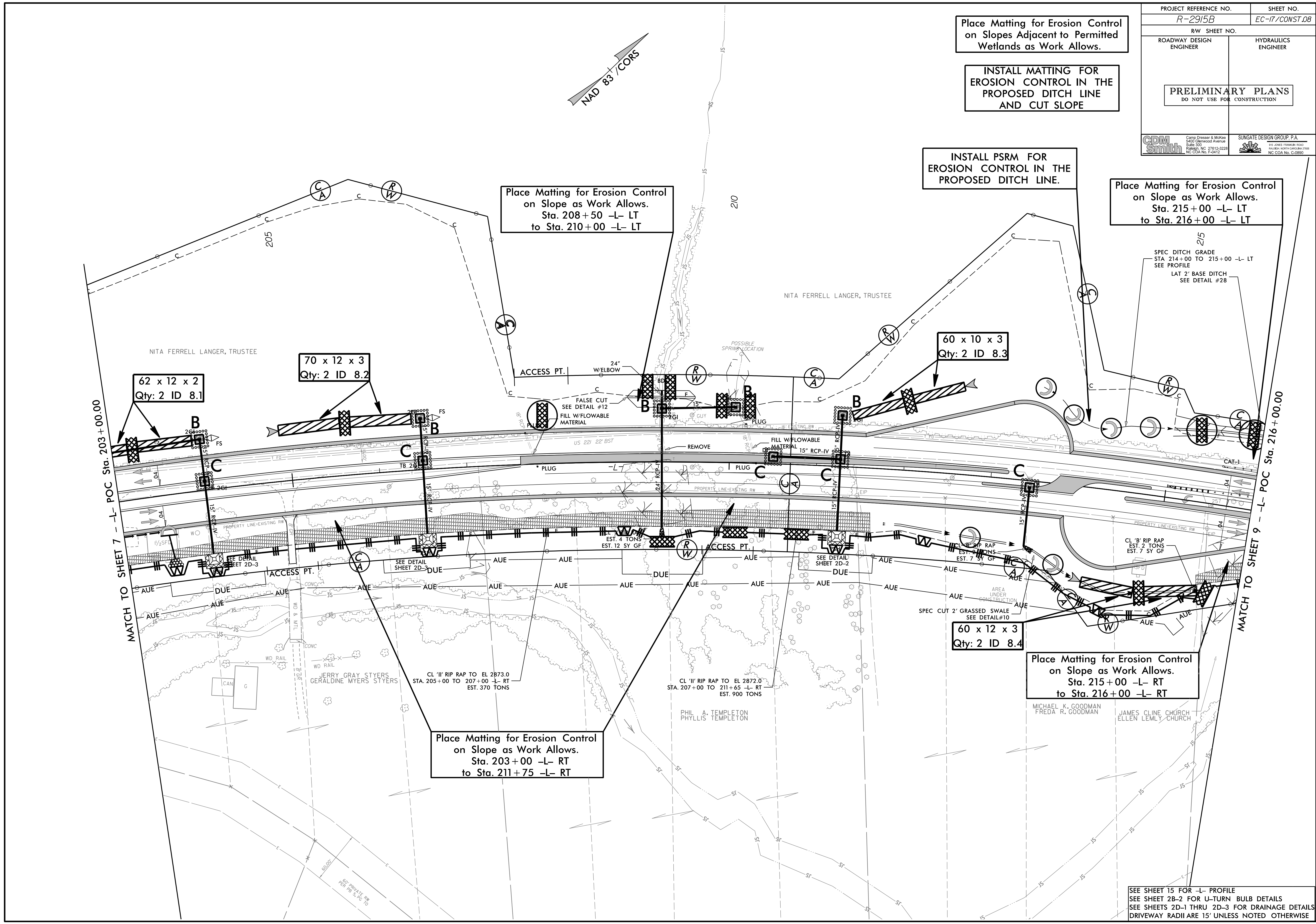


09/08/14 - RW REVISIONS: ADDED AN ACCESS POINT FROM -L- STA. 207+58.00 TO STA. 208+18.00 LT. ON PARCEL 30. - DJC

PROJECT REFERENCE NO. R-2915B	SHEET NO. EC-17/CONST.08
RW SHEET NO.	
ROADWAY DESIGN ENGINEER	HYDRAULICS ENGINEER
PRELIMINARY PLANS DO NOT USE FOR CONSTRUCTION	
CDM Smith Camp Dresser & McKee 5425 Glenwood Avenue Suite 300 Raleigh, NC 27612-3229 NC CDA No. F-5412	SUNGATE DESIGN GROUP, P.A. 110 JONES FARM ROAD HARRISBORO, NC 27533 NC CDA No. G-3890



SEE SHEET 15 FOR -L- PROFILE  
 SEE SHEET 2B-2 FOR U-TURN BULB DETAILS  
 SEE SHEETS 2D-1 THRU 2D-3 FOR DRAINAGE DETAILS  
 DRIVEWAY RADII ARE 15' UNLESS NOTED OTHERWISE