

010515 - RW REVISIONS: UPDATED PROPERTY OWNER NAME ON PARCEL 39. - PJS

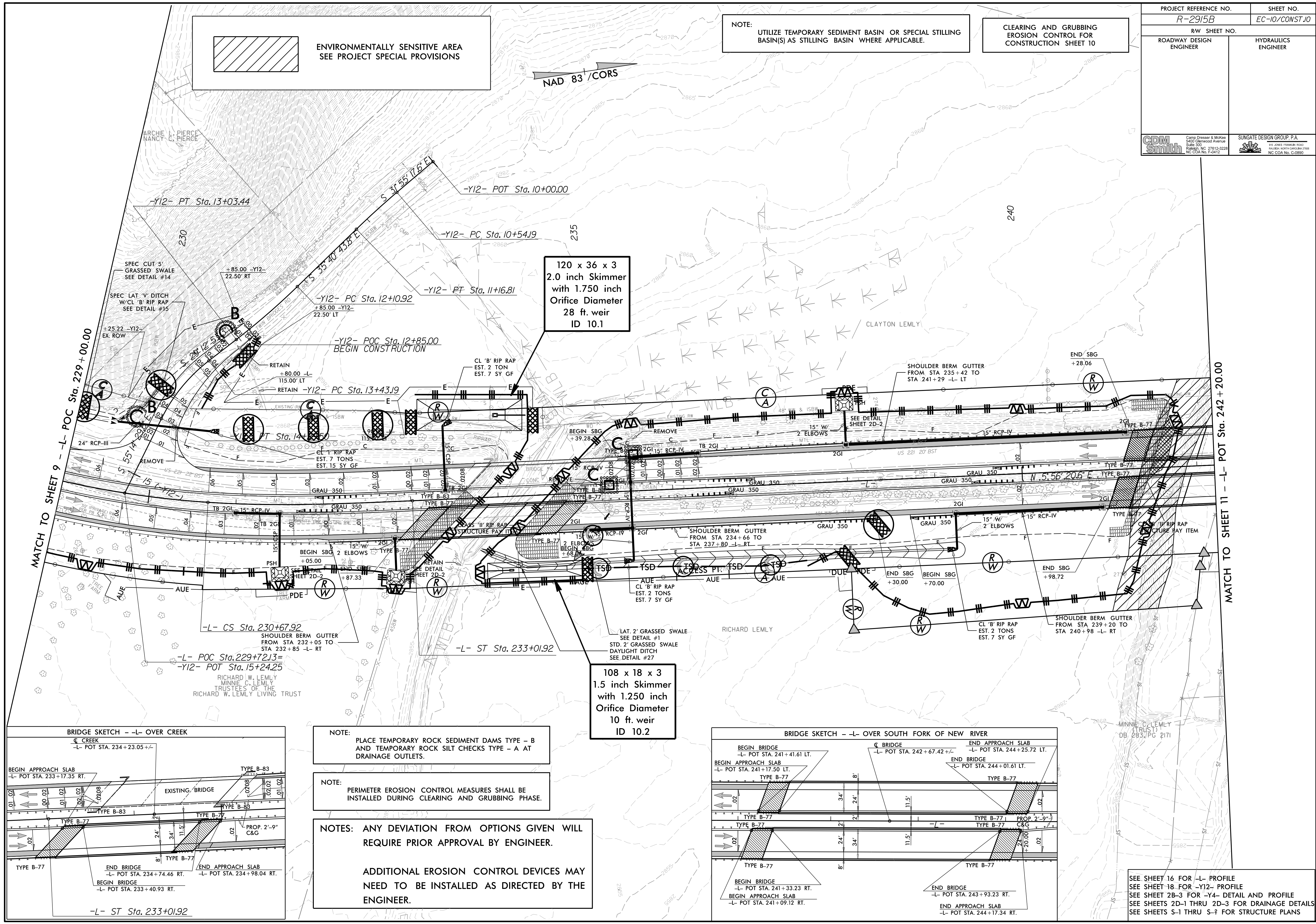
PROJECT REFERENCE NO. <i>R-2915B</i>	SHEET NO. <i>EC-10/CONST.10</i>
RW SHEET NO.	
ROADWAY DESIGN ENGINEER	HYDRAULICS ENGINEER
CDM Smith Camp Dresser & McKee 5425 Glenwood Avenue Suite 500 Raleigh, NC 27612-3229 NC CDA No. F-5412	SUNGATE DESIGN GROUP, P.A. 110 JONES FARM ROAD HUNTER HOOK, CAROLINA 27614 NC CDA No. G-9890

 ENVIRONMENTALLY SENSITIVE AREA
SEE PROJECT SPECIAL PROVISIONS

NOTE:
UTILIZE TEMPORARY SEDIMENT BASIN OR SPECIAL STILLING BASIN(S) AS STILLING BASIN WHERE APPLICABLE.

CLEARING AND GRUBBING
EROSION CONTROL FOR
CONSTRUCTION SHEET 10

NAD 83 / CORS

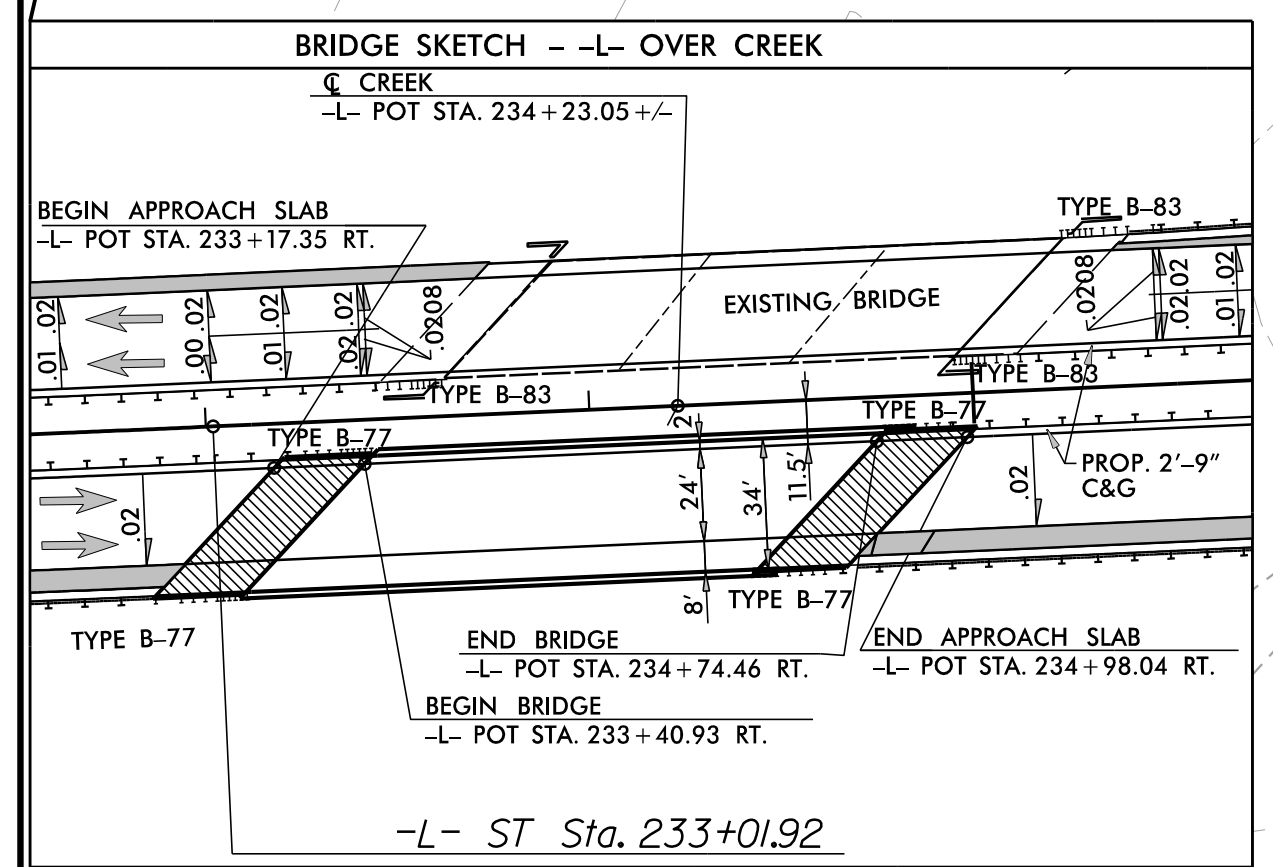


MATCH TO SHEET 9 - L- POC Sta. 229+00.00

MATCH TO SHEET 11 - L- POT Sta. 242+20.00

120 x 36 x 3
2.0 inch Skimmer
with 1.750 inch
Orifice Diameter
28 ft. weir
ID 10.1

108 x 18 x 3
1.5 inch Skimmer
with 1.250 inch
Orifice Diameter
10 ft. weir
ID 10.2

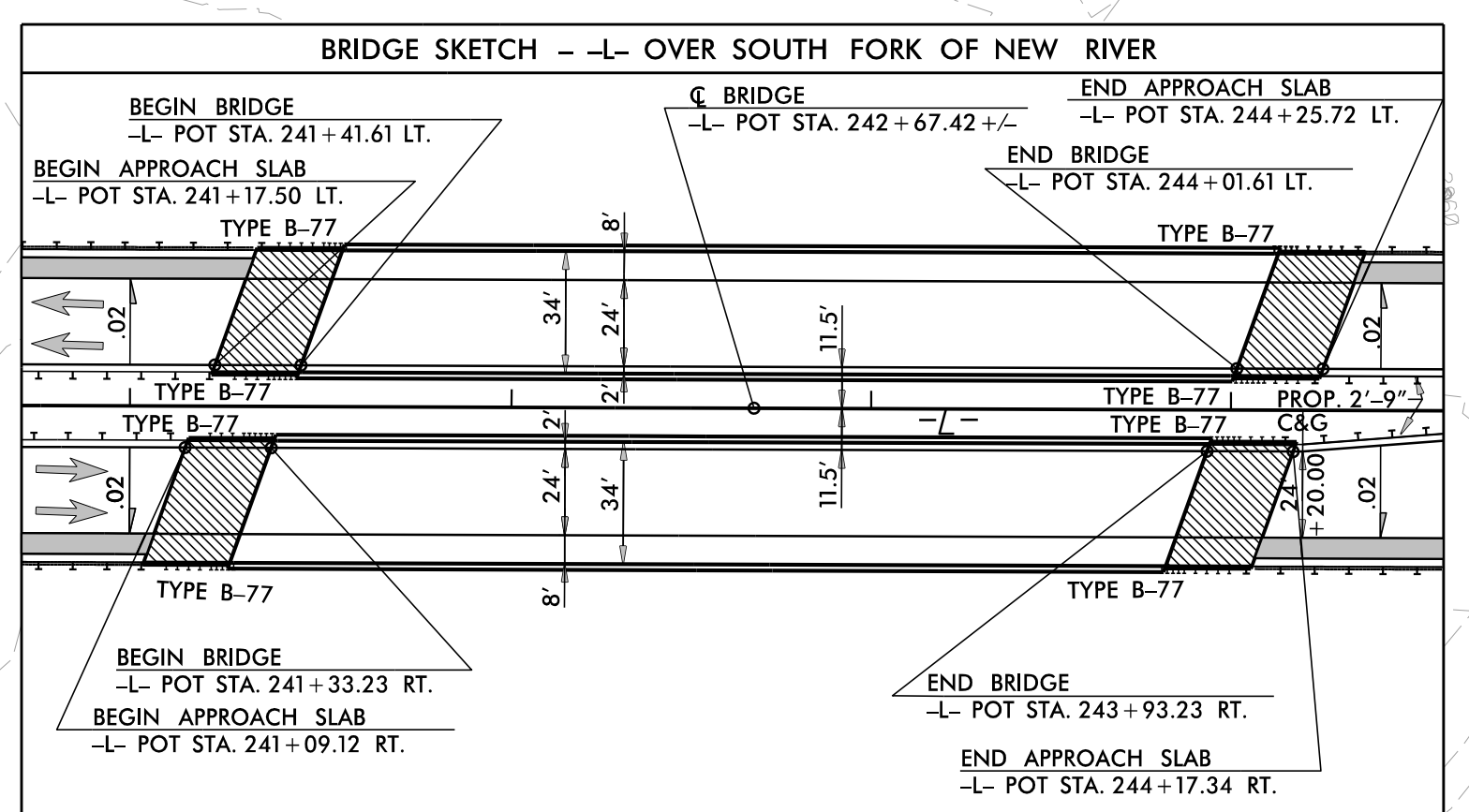


NOTE:
PLACE TEMPORARY ROCK SEDIMENT DAMS TYPE - B
AND TEMPORARY ROCK SILT CHECKS TYPE - A AT
DRAINAGE OUTLETS.

NOTE:
PERIMETER EROSION CONTROL MEASURES SHALL BE
INSTALLED DURING CLEARING AND GRUBBING PHASE.

NOTES: ANY DEVIATION FROM OPTIONS GIVEN WILL
REQUIRE PRIOR APPROVAL BY ENGINEER.

ADDITIONAL EROSION CONTROL DEVICES MAY
NEED TO BE INSTALLED AS DIRECTED BY THE
ENGINEER.



SEE SHEET 16 FOR -L- PROFILE
SEE SHEET 18 FOR -Y12- PROFILE
SEE SHEET 2B-3 FOR -Y4- DETAIL AND PROFILE
SEE SHEETS 2D-1 THRU 2D-3 FOR DRAINAGE DETAILS
SEE SHEETS S-1 THRU S-3 FOR STRUCTURE PLANS