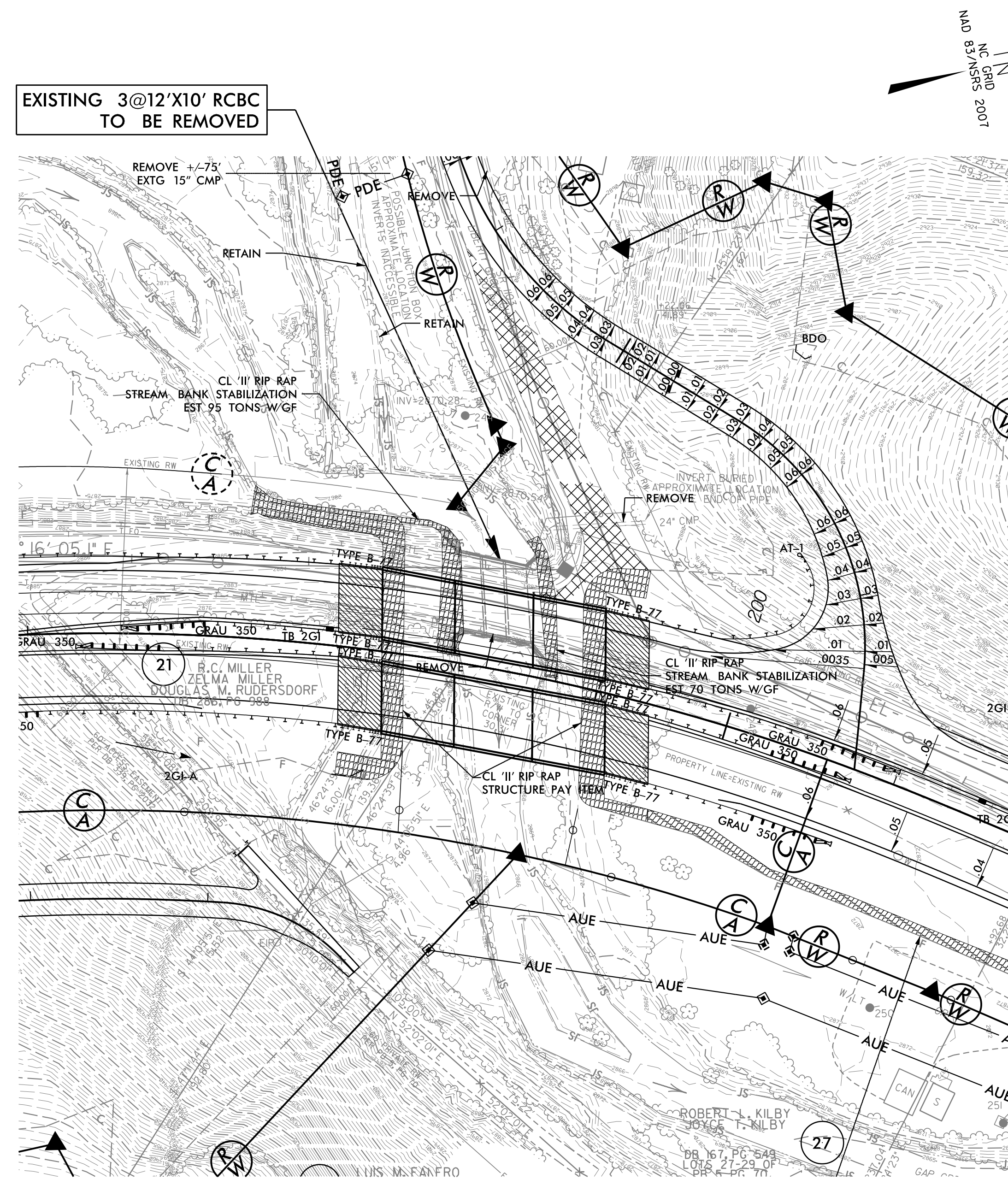


GAP CREEK CULVERT REMOVAL SEQUENCE STA. 198+65 -L-

PROJECT REFERENCE NO. <i>R-2915B</i>	SHEET NO. <i>EC-07A/CONST.07</i>
RW SHEET NO.	
ROADWAY DESIGN ENGINEER	HYDRAULICS ENGINEER

PHASE I

1. CONSTRUCT NORTH BOUND BRIDGE AND ROADWAY, UTILIZING TEMPORARY SHORING AS NEEDED.
2. SHIFT TRAFFIC TO NORTH BOUND BRIDGE.
3. REMOVE EXISTING 3@12'X10' RCBC.



PHASE II

1. INSTALL IMPERVIOUS DIKE #1 AND #2.
2. CONSTRUCT INTERIOR BRIDGE BENTS OF SOUTH BOUND BRIDGE.
3. INSTALL CL 'II' RIP RAP BANK STABILIZATION.
4. CONSTRUCT SOUTH BOUND BRIDGE.

