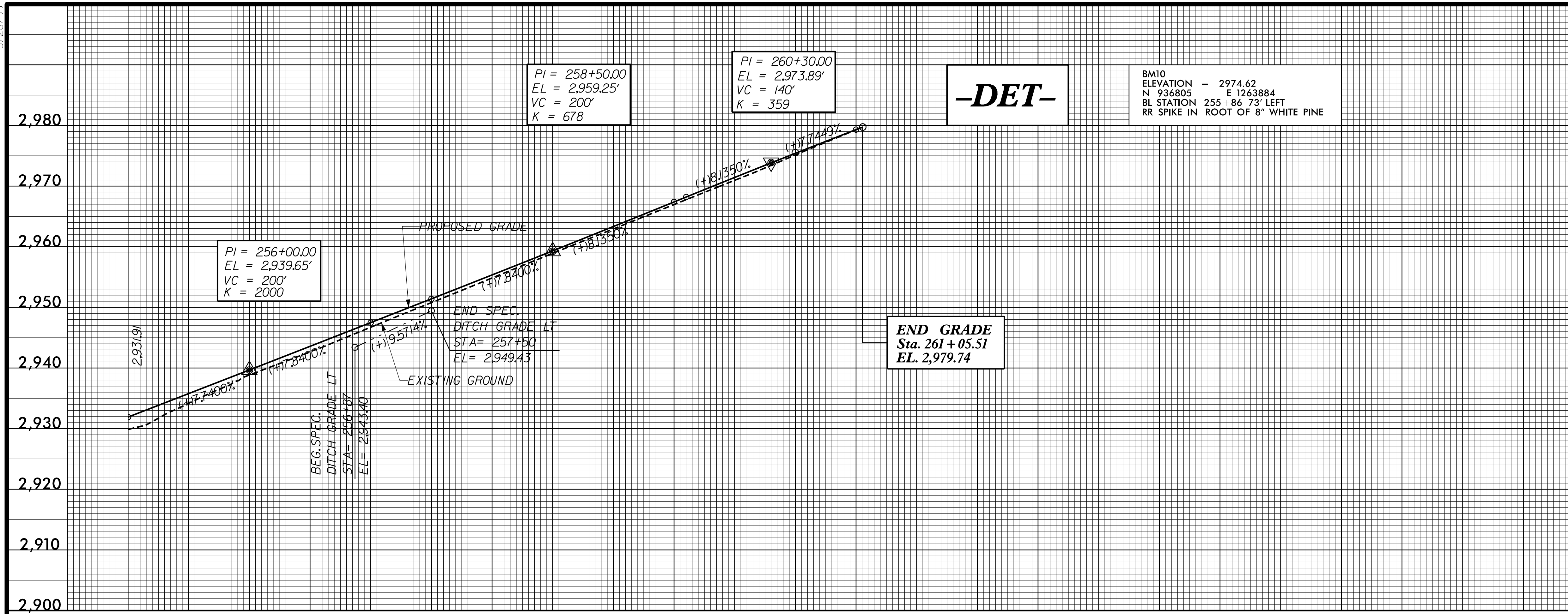


5/28/99

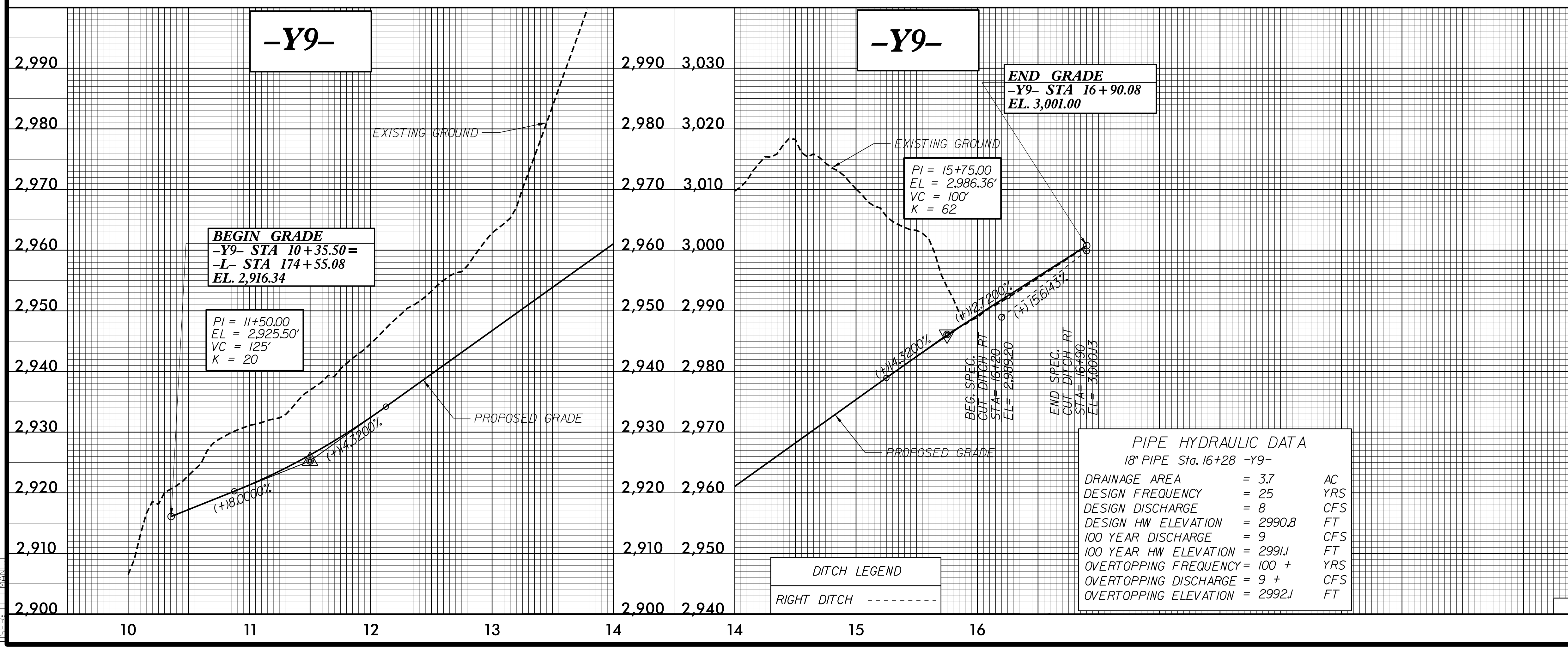
PROJECT REFERENCE NO. R-2915B	SHEET NO. 17
ROADWAY DESIGN ENGINEER	HYDRAULICS ENGINEER



2,960
2,950
2,940
2,930
2,920
2,910
2,900

SEE SHEET 12 FOR -DET-

6/26/2005 8:12:05 AM _PEL_17.DGN



2,990
2,980
2,970
2,960
2,950
2,940
2,930
2,920
2,910
2,900

3,030
3,020
3,010
3,000
2,990
2,980
2,970
2,960
2,950
2,940

SEE SHEET 5 & 6 FOR -Y9-

PIPE HYDRAULIC DATA
18" PIPE Sta. 16+28 -Y9-

DRAINAGE AREA	= 3.7	AC
DESIGN FREQUENCY	= 25	YRS
DESIGN DISCHARGE	= 8	CFS
DESIGN HW ELEVATION	= 2990.8	FT
100 YEAR DISCHARGE	= 9	CFS
100 YEAR HW ELEVATION	= 2991.1	FT
OVERTOPPING FREQUENCY	= 100 +	YRS
OVERTOPPING DISCHARGE	= 9 +	CFS
OVERTOPPING ELEVATION	= 2992.1	FT

DITCH LEGEND

RIGHT DITCH - - - - -