

5/28/19

PROJECT REFERENCE NO. R-2915B	SHEET NO. 16
ROADWAY DESIGN ENGINEER Douglas B. SAINWILLERS, PE 7/17/2015 SEAL 1460	HYDRAULICS ENGINEER W. Henry Wells, Jr. 7/17/2015 SEAL 9334
CDM Smith Camp Dresser & McKee 540 Glenwood Avenue Suite 300 Raleigh, NC 27612-3228 NC CDA No. F-0412	SONGATE DESIGN GROUP P.A. 1101 GOLF COURSE PARKWAY RALEIGH, NORTH CAROLINA 27615 NC CDA No. C-0880

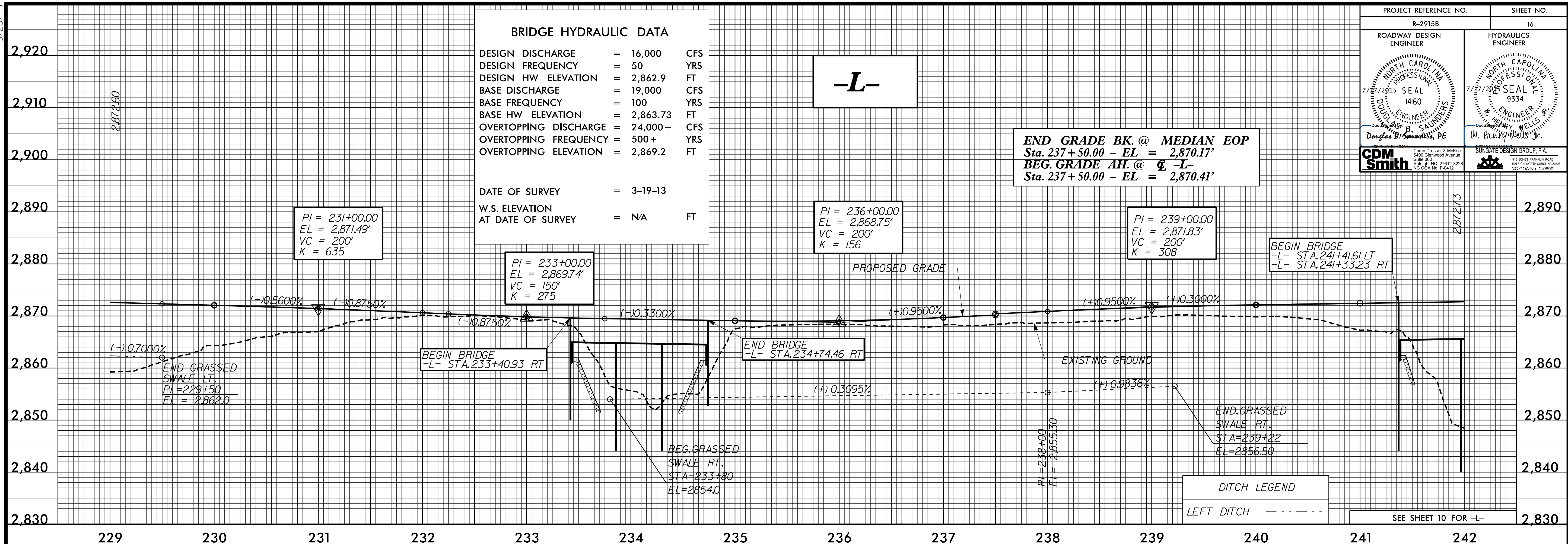
BRIDGE HYDRAULIC DATA

DESIGN DISCHARGE	= 16,000	CFS
DESIGN FREQUENCY	= 50	YRS
DESIGN HW ELEVATION	= 2,862.9	FT
BASE DISCHARGE	= 19,000	CFS
BASE FREQUENCY	= 100	YRS
BASE HW ELEVATION	= 2,863.73	FT
OVERTOPPING DISCHARGE	= 24,000+	CFS
OVERTOPPING FREQUENCY	= 500+	YRS
OVERTOPPING ELEVATION	= 2,869.2	FT

DATE OF SURVEY	= 3-19-13
W.S. ELEVATION AT DATE OF SURVEY	= NA FT

-L-

END GRADE BK. @ MEDIAN EOP
Sta. 237+50.00 - EL = 2,870.17'
BEG. GRADE AH. @ CL -L-
Sta. 237+50.00 - EL = 2,870.41'



DITCH LEGEND
LEFT DITCH - - - - -
SEE SHEET 10 FOR -L-

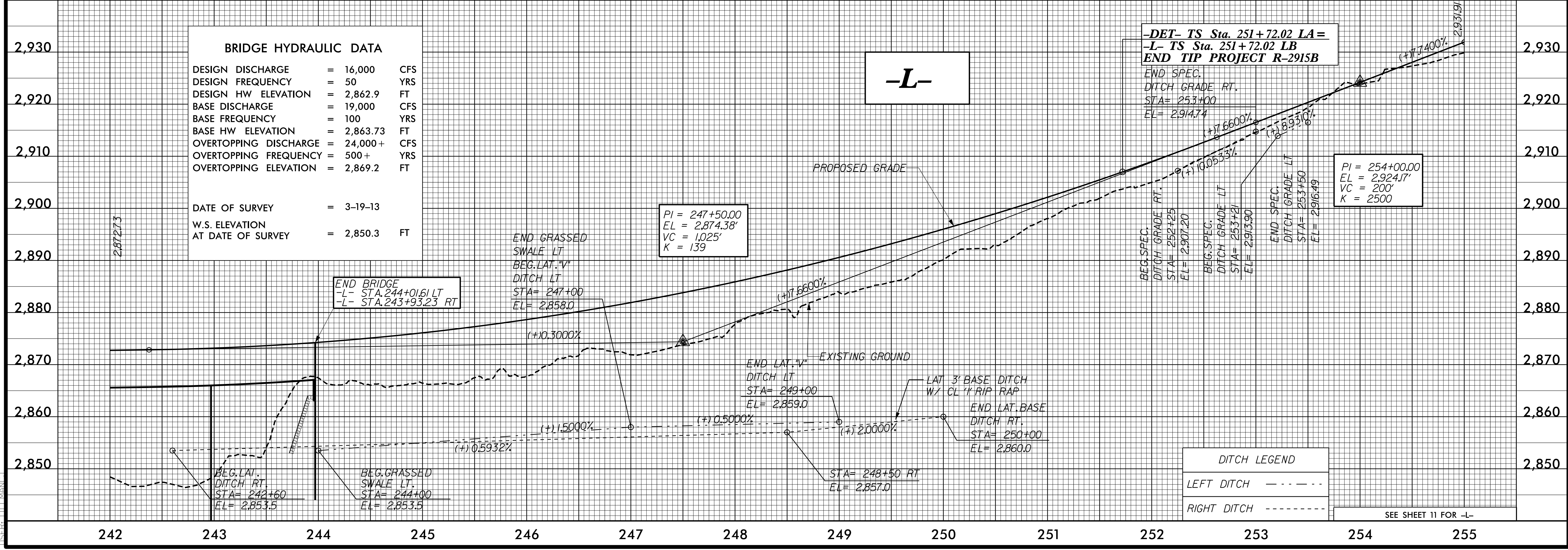
BRIDGE HYDRAULIC DATA

DESIGN DISCHARGE	= 16,000	CFS
DESIGN FREQUENCY	= 50	YRS
DESIGN HW ELEVATION	= 2,862.9	FT
BASE DISCHARGE	= 19,000	CFS
BASE FREQUENCY	= 100	YRS
BASE HW ELEVATION	= 2,863.73	FT
OVERTOPPING DISCHARGE	= 24,000+	CFS
OVERTOPPING FREQUENCY	= 500+	YRS
OVERTOPPING ELEVATION	= 2,869.2	FT

DATE OF SURVEY	= 3-19-13
W.S. ELEVATION AT DATE OF SURVEY	= 2,850.3 FT

-L-

-DET- TS Sta. 251+72.02 LA =
-L- TS Sta. 251+72.02 LB
END TIP PROJECT R-2915B
END SPEC.
DITCH GRADE RT.
STA = 253+00
EL = 2,914.74



DITCH LEGEND
LEFT DITCH - - - - -
RIGHT DITCH - - - - -
SEE SHEET 11 FOR -L-

7/14/2015 12:28:14 PM R-2915B.RVT_PEL-16.DGN