

5/28/99

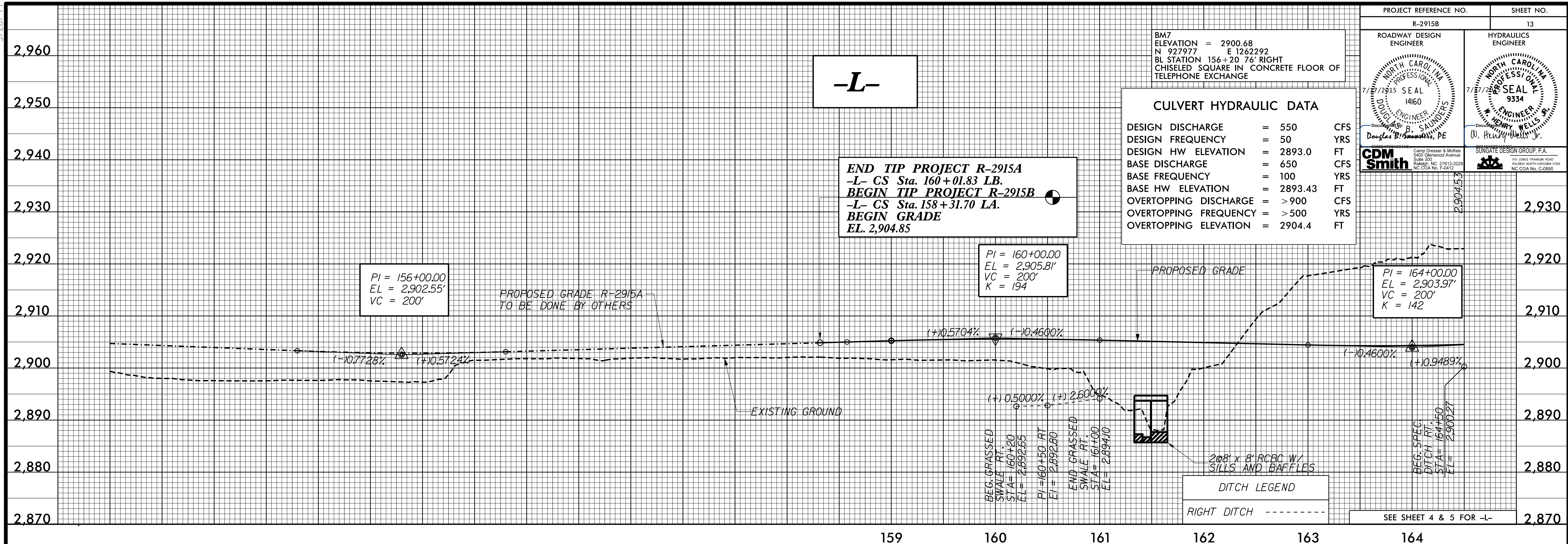
ROADWAY DESIGN ENGINEER	HYDRAULICS ENGINEER

--	--

BM7
ELEVATION = 2900.68
N 927977 E 1262292
BL STATION 156+20.76 RIGHT
CHISELED SQUARE IN CONCRETE FLOOR OF
TELEPHONE EXCHANGE

CULVERT HYDRAULIC DATA		
DESIGN DISCHARGE	= 550	CFS
DESIGN FREQUENCY	= 50	YRS
DESIGN HW ELEVATION	= 2893.0	FT
BASE DISCHARGE	= 650	CFS
BASE FREQUENCY	= 100	YRS
BASE HW ELEVATION	= 2893.43	FT
OVERTOPPING DISCHARGE	= > 900	CFS
OVERTOPPING FREQUENCY	= > 500	YRS
OVERTOPPING ELEVATION	= 2904.4	FT

END TIP PROJECT R-2915A
-L- CS Sta. 160+01.83 LB.
BEGIN TIP PROJECT R-2915B
-L- CS Sta. 158+31.70 LA.
BEGIN GRADE
EL. 2,904.85



6/26/2015 8:14:44 AM
R-2915B-F04-p13.dgn
USER: CHU-MANIC

