

SURVEY CONTROL SHEET R-2915B

BL POINT	DESC.	NORTH	EAST	ELEVATION	L STATION	OFFSET
BL46	BL -46	928402.6058	1262144.5944	2906.40	164+57.70	59.72 LT
BL47	BL -47	929326.9840	1262283.2690	2910.77	173+86.62	21.84 LT
BL48	BL -48	929833.8683	1262134.0936	2912.87	179+30.93	18.77 LT
BL49	BL -49	930252.5771	1261808.4631	2904.69	184+62.04	52.22 LT
BL50	BL -50	930705.0036	1261535.6732	2897.84	189+78.77	56.31 LT
BL51	BL -51	931116.0346	1261433.0556	2890.72	193+82.19	74.07 LT
BL52	BL -52	931641.1471	1261537.6793	2881.92	198+92.50	62.93 LT
BL53	BL -53	932216.8529	1261999.6996	2876.74	206+18.26	5.40 RT
BL54	BL -54	932765.6058	1262461.6063	2874.49	213+30.49	49.96 LT
BL55	BL -55	933354.5662	1263260.6930	2871.17	223+21.60	61.35 LT
BL56	BL -56	933897.1980	1263665.8120	2870.83	230+36.98	17.88 LT
BL57	BL -57	934899.1246	1263792.5538	2870.93	240+49.66	7.77 LT
BL58	BL -58	935740.1689	1263880.7456	2884.86	248+95.32	7.08 LT

BY6 POINT	DESC.	NORTH	EAST	ELEVATION	Y10 STATION	OFFSET
BY680	BY6-80	931624.6900	1260669.6512	2913.15	OUTSIDE PROJECT LIMITS	
BY681	BY6-81	931641.1471	1261537.6793	2881.92	15+36.22	122.93 RT

BY7 POINT	DESC.	NORTH	EAST	ELEVATION	Y13 STATION	OFFSET
BY782	BY7-82	936407.6723	1263268.6732	2888.19	OUTSIDE PROJECT LIMITS	
BY783	BY7-83	936468.4871	1263464.0511	2903.80	OUTSIDE PROJECT LIMITS	
BY784	BY7-84	936429.4463	1263916.1701	2937.49	12+75.74	20.96 RT

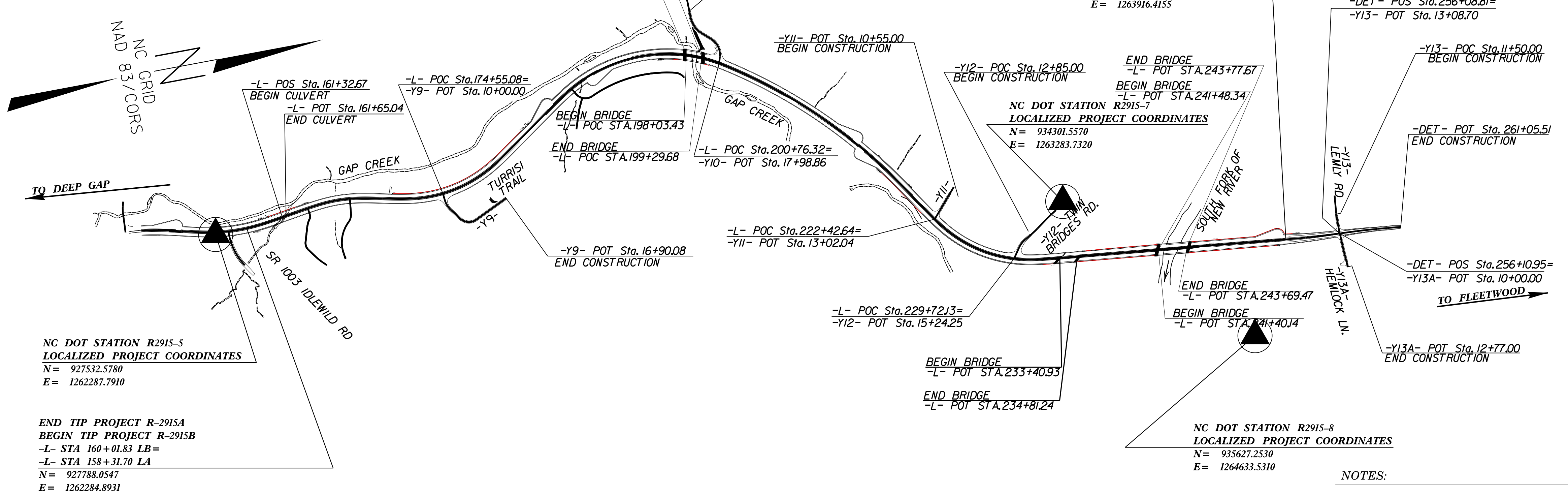
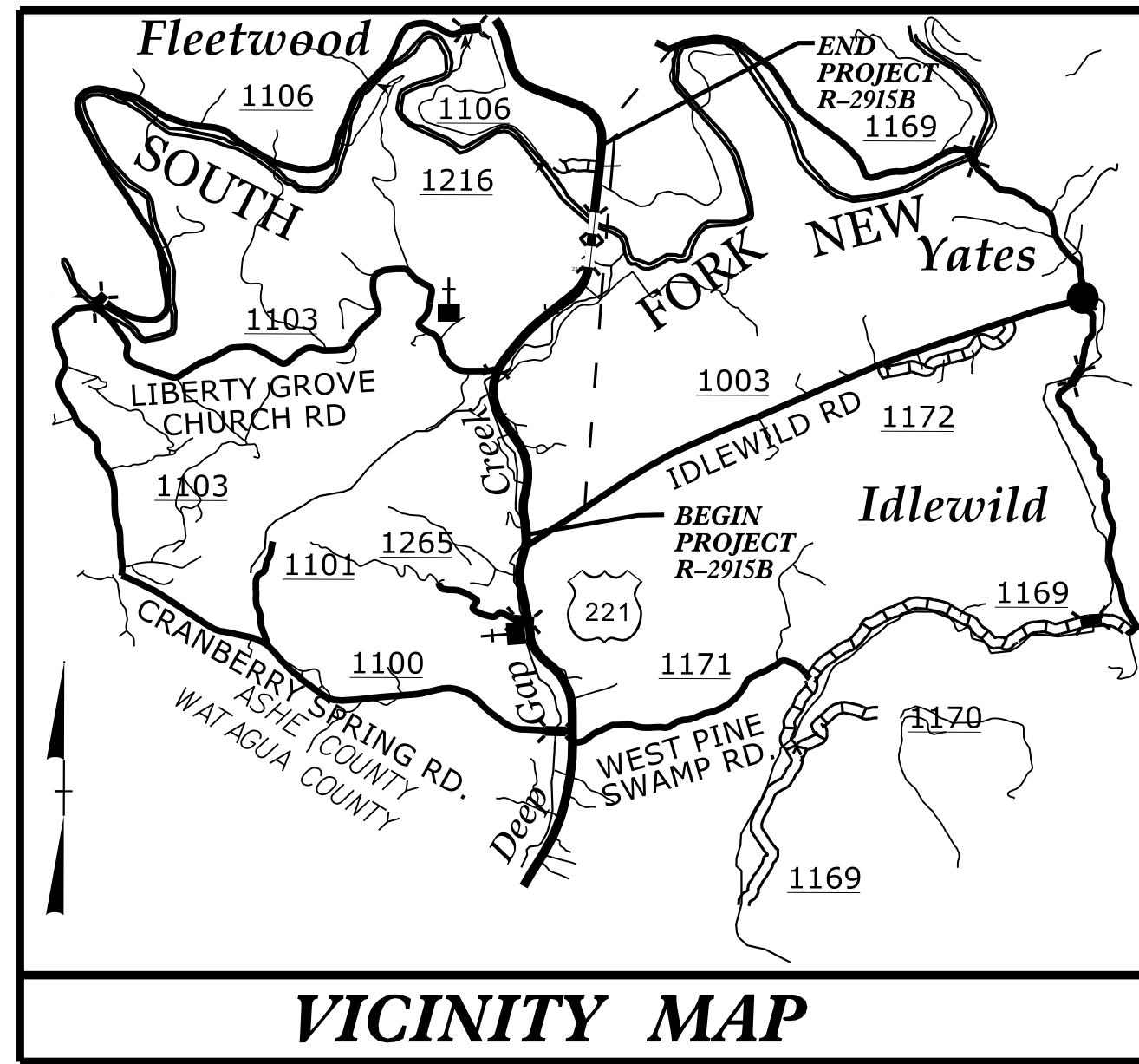
.....

BM7 ELEVATION = 2900.68
N 927977 E 1262292
L STATION 160+18.00 24 RIGHT
CHISELED SQUARE IN CONCRETE FLOOR OF
TELEPHONE EXCHANGE
.....

BM8 ELEVATION = 2881.14
N 930658 E 1261410
L STATION 189+80.00 191 LEFT
RR SPIKE IN 30" WHITE PINE
.....

BM9 ELEVATION = 2871.28
N 932968 E 1262584
L STATION 215+49.00 130 LEFT
RR SPIKE IN ROOT OF 24" FORKED CHERRY
TREE
.....

BM10 ELEVATION = 2974.62
N 936805 E 1263884
L STATION 161+56.00
N 10°39'23.54" E DIST 8848.34
RR SPIKE IN ROOT OF 8" WHITE PINE
.....



NC DOT STATION R2915-5
LOCALIZED PROJECT COORDINATES
N = 927532.5780
E = 1262287.7910

END TIP PROJECT R-2915A
BEGIN TIP PROJECT R-2915B
-L- STA 160+01.83 LB=
-L- STA 158+31.70 LA=
N = 927788.0547
E = 1262284.8931

NC DOT STATION R2915-6
LOCALIZED PROJECT COORDINATES
N = 926551.4520
E = 1265372.0870

NC DOT STATION R2915-8
LOCALIZED PROJECT COORDINATES
N = 935627.2530
E = 1264633.5310

DATUM DESCRIPTION

THE LOCALIZED COORDINATE SYSTEM DEVELOPED FOR THIS PROJECT IS BASED ON THE STATE PLANE COORDINATES ESTABLISHED BY NCDOT FOR MONUMENT "R2915-15"
WITH NAD 83/CORS STATE PLANE GRID COORDINATES OF
NORTHING: 954880.7810(±) EASTING: 1254012.2870(±)
ELEVATION: 3097.5210(±)
THE AVERAGE COMBINED GRID FACTOR USED ON THIS PROJECT (GROUND TO GRID) IS: 0.99991292
THE N.C. LAMBERT GRID BEARING AND LOCALIZED HORIZONTAL GROUND DISTANCE FROM "R2915-15" TO -L- STATION 158+31.70 IS
S 16°58'47" E 28327.5827
ALL LINEAR DIMENSIONS ARE LOCALIZED HORIZONTAL DISTANCES
VERTICAL DATUM USED IS NAVD 88

- NOTES:
- THE SITE CALIBRATION SHOWN IS BASED UPON A NETWORK TIED TO THE HARN (HIGH ACCURACY REFERENCE NETWORK) NAD 83/95 ADJUSTMENT. THIS CALIBRATION WILL ALLOW THE END USER TO WORK WITHIN THE SAME COORDINATE SYSTEM WHEN USING RTK (REAL TIME KINEMATIC) GPS AND A LOCAL BASE STATION. IF ANOTHER SYSTEM SUCH AS VRS (VIRTUAL REFERENCE STATION) IS USED, ADDITIONAL FIELD TIES MAY BE NEEDED TO REDUCE POSSIBLE ERRORS, OR BIASES.
 - THE CONTROL DATA FOR THIS PROJECT CAN BE FOUND ELECTRONICALLY BY SELECTING PROJECT CONTROL DATA AT:
[HTTPS://CONNECT.NCDOT.GOV/RESOURCES/LOCATION/](https://connect.ncdot.gov/resources/location/)
THE FILES TO BE FOUND ARE AS FOLLOWS:
R2915B_LS_GPSCALIB.HTML
R2915B_LS_WGS84.TXT
R2915B_LS_LOCAL.TXT
R2915B_LS_CONTROL.TXT
THE WGS84 AND LOCAL FILES ARE COMMA DELIMITED AND CAN BE USED TO REPRODUCE THE SITE CALIBRATION FOR THE END USER'S GPS EQUIPMENT. IF FURTHER INFORMATION IS NEEDED, PLEASE CONTACT THE LOCATION AND SURVEYS UNIT.
- © INDICATES GEODETIC CONTROL MONUMENTS USED OR SET FOR HORIZONTAL PROJECT CONTROL BY THE NCDOT LOCATION AND SURVEYS UNIT.
PROJECT CONTROL ESTABLISHED USING GLOBAL POSITIONING SYSTEM.
SEE GPS CALIBRATION SHEET FOR HORIZONTAL AND VERTICAL COORDINATE VALUES.

NOTE: DRAWING NOT TO SCALE

6/2/09

29 JUL 2015 10:43 02915B_LS-1C-1.dgn