

**This electronic collection of documents is provided  
for the convenience of the user  
and is Not a Certified Document –**

**The documents contained herein were originally issued  
and sealed by the individuals whose names and license  
numbers appear on each page, on the dates appearing  
with their signature on that page.**

**This file or an individual page  
shall not be considered a certified document.**

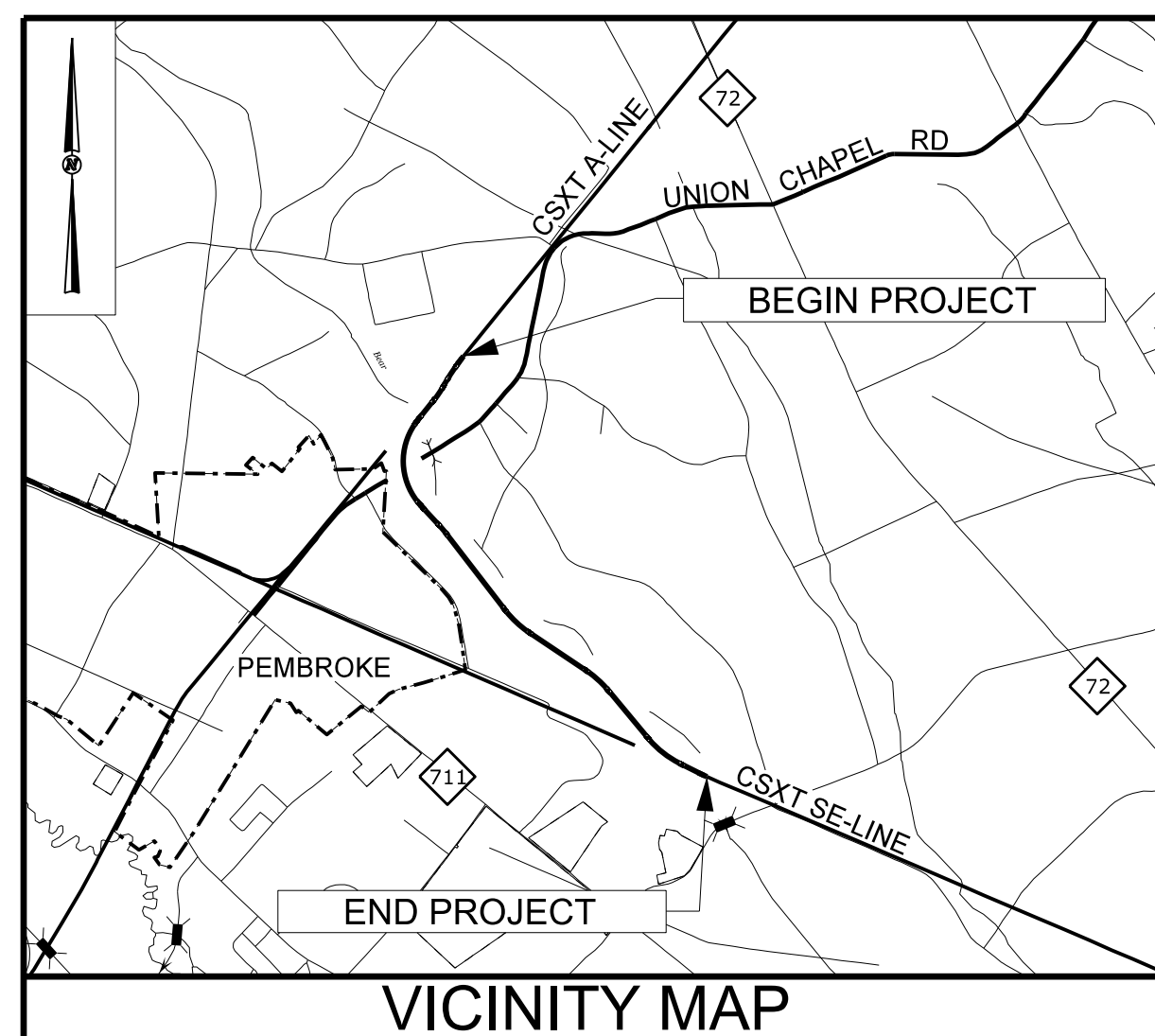
STATE	STATE PROJECT REFERENCE NO.	SHEET NO.	TOTAL SHEETS
N.C.	P-4900A	UO-01	4

STATE OF NORTH CAROLINA  
NCDOT RAIL DIVISION

# ROBESON COUNTY

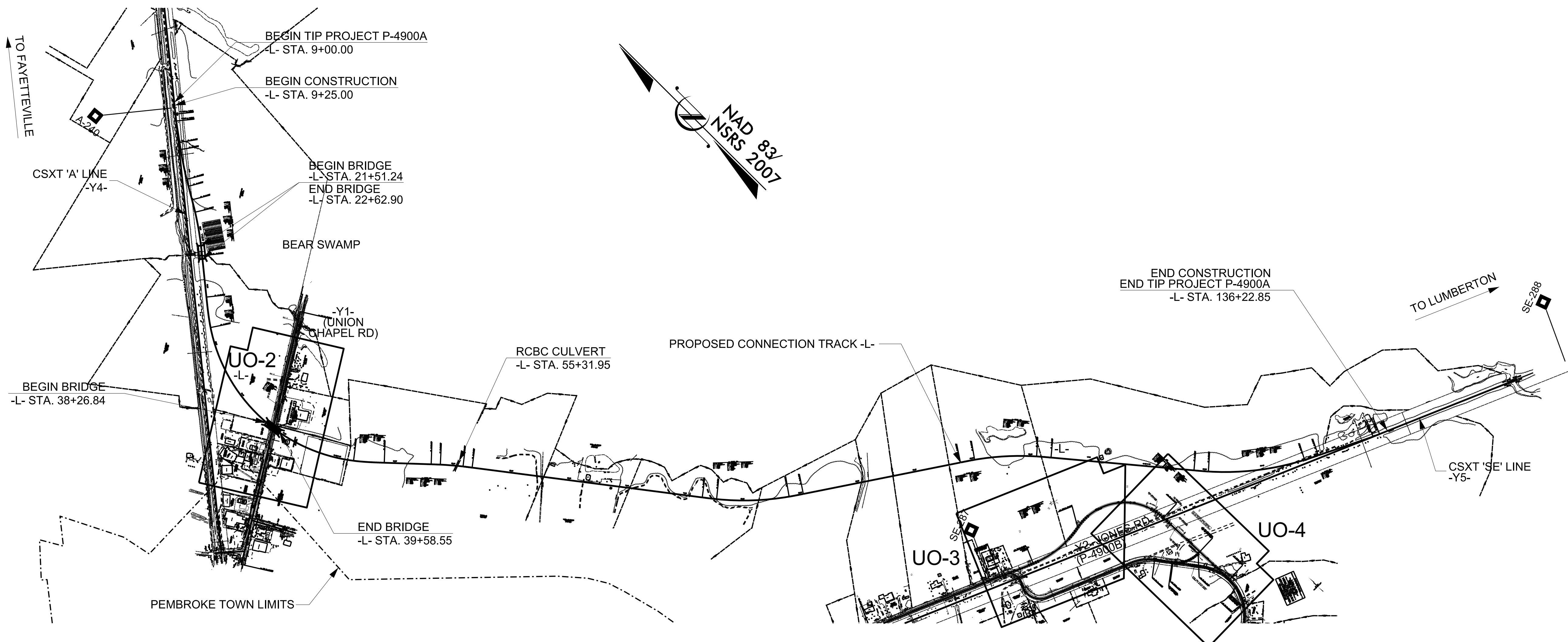
**LOCATION: RAIL GRADE SEPARATION OVER SR 1563 (UNION CHAPEL RD)  
& GRADE CROSSING RELOCATION ON SR 1571 (JONES RD).**

**TYPE OF WORK: UTILITY BY OTHERS**

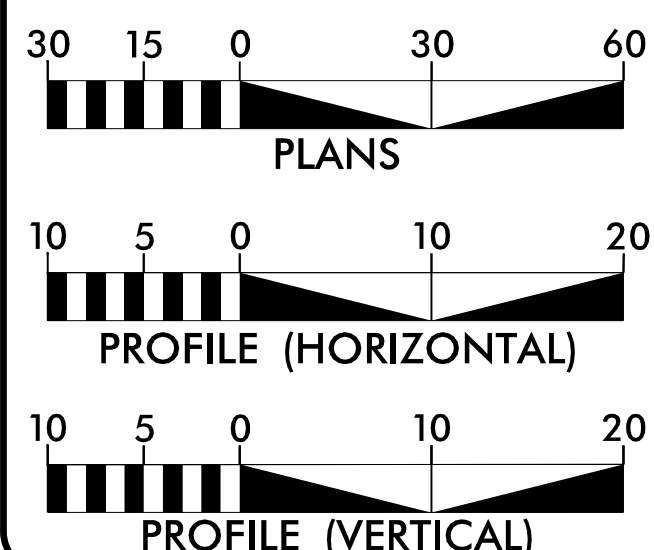


**TIP PROJECT: P-4900A**

**CONTRACT: C203632**



**GRAPHIC SCALES**



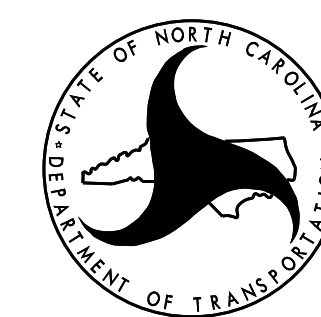
**INDEX OF SHEETS**

**SHEET NO.**

- UO-1
- UO-2
- UO-3
- UO-4

**UTILITY OWNERS ON THIS PROJECT:**

- POWER - DUKE ENERGY
- POWER - LUMBEE RIVER EMC
- PHONE - AT&T
- CATV - TIME WARNER
- GAS - PNG



NORTH CAROLINA DEPARTMENT OF TRANSPORTATION

# RAIL DIVISION

UTILITY DESIGN BY:

**M A Engineering Consultants, Inc.**  
598 East Chatham Street Suite 137 Cary, NC 27511  
Phone: 919.297.0220

Prepared for:

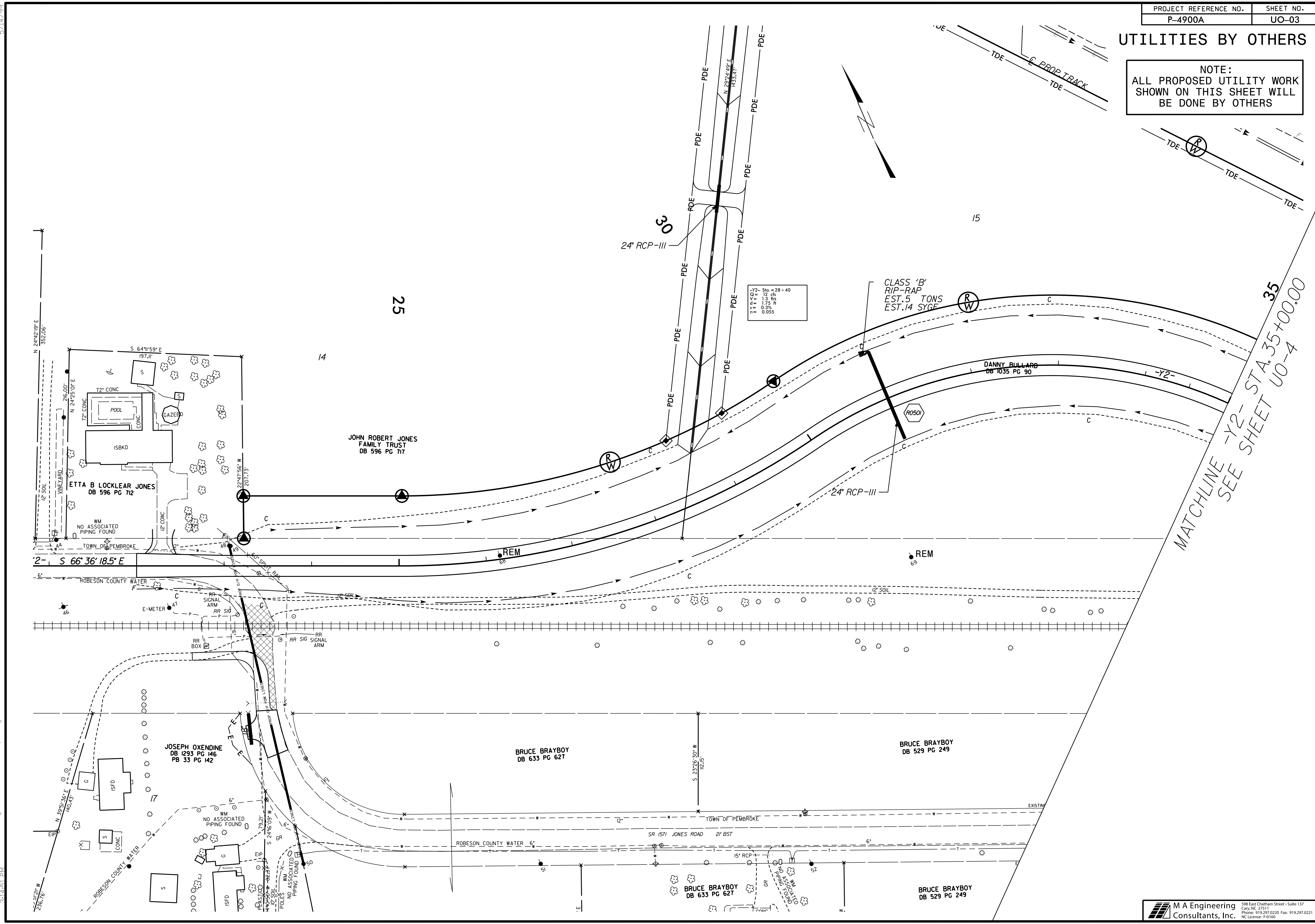
**ENGINEERING & SAFETY BRANCH**

MAIL: 1556 MAIL SERVICE CENTER RALEIGH, NC 27699-1556  
DELIVERY: 860 CAPITAL BOULEVARD RALEIGH, NC 27603  
PHONE: (919) 715-8803  
FAX: (919) 715-8804



### UTILITIES BY OTHERS

NOTE:  
ALL PROPOSED UTILITY WORK  
SHOWN ON THIS SHEET WILL  
BE DONE BY OTHERS



-Y2- Sta. = 28 + 40  
G = 12.45  
V = 1.3 Hs  
d = 1.75 H  
s = 0.3%  
n = 0.055

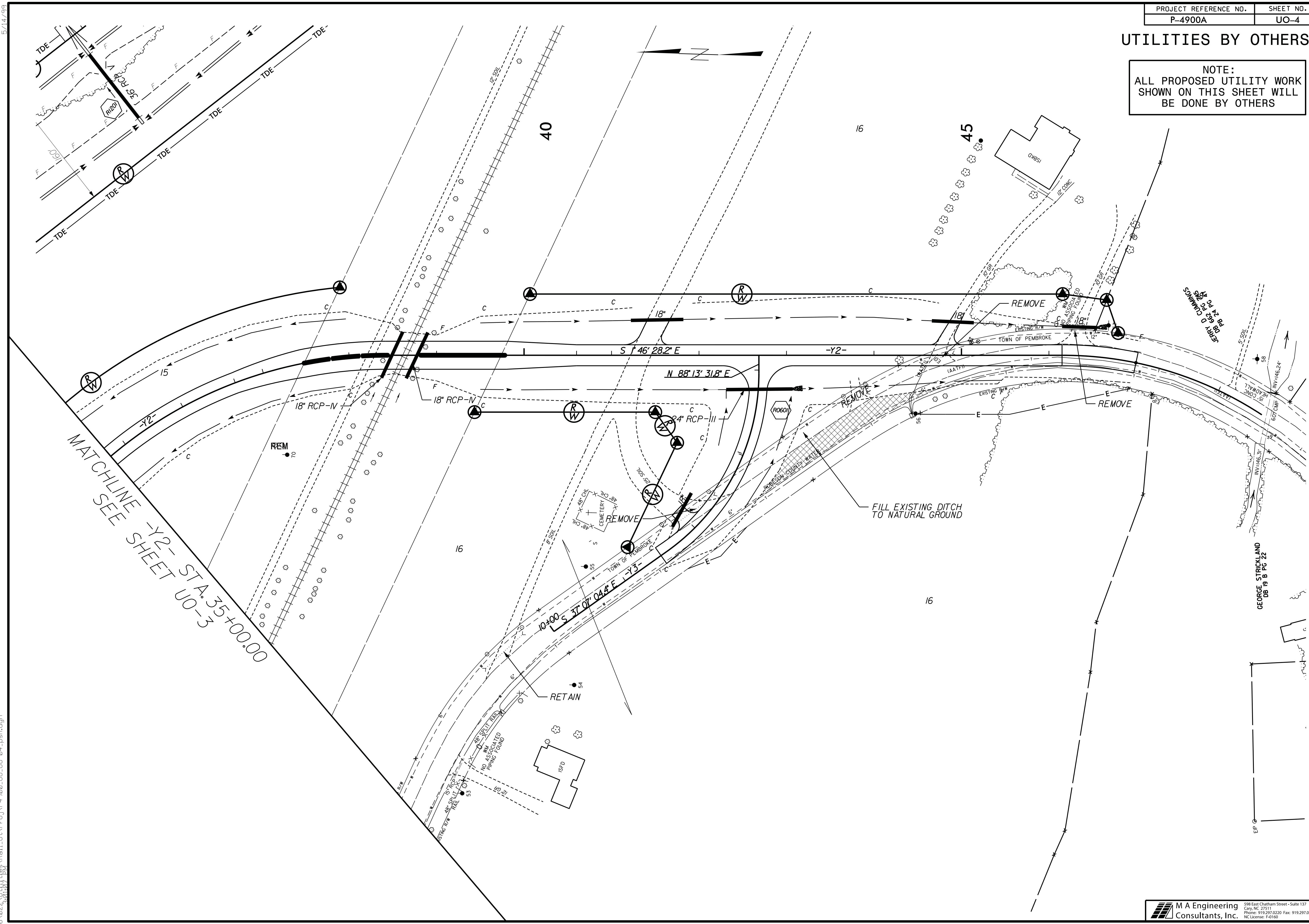
CLASS 'B'  
RIP-RAP  
EST. 5 TONS  
EST. 14 SYGE

MATCHLINE  
SEE SHEET UO-4  
-Y2- STA. 35+00.00

5/14/99  
  
 \0696\022\19 2015\Rail\_Lit\Proc\4900\_UO\_UO-03\_psh.dgn  
 1/19/2015 11:51:53 AM

### UTILITIES BY OTHERS

NOTE:  
ALL PROPOSED UTILITY WORK  
SHOWN ON THIS SHEET WILL  
BE DONE BY OTHERS



MATCHLINE -Y2- STA. 35+00.00  
SEE SHEET UO-3

5/14/99

1/19/2015  
\\0656.022\Uo\Utilities\Rail\_Ut\Proj\4900\_UO\_UO-04\_psh.dgn