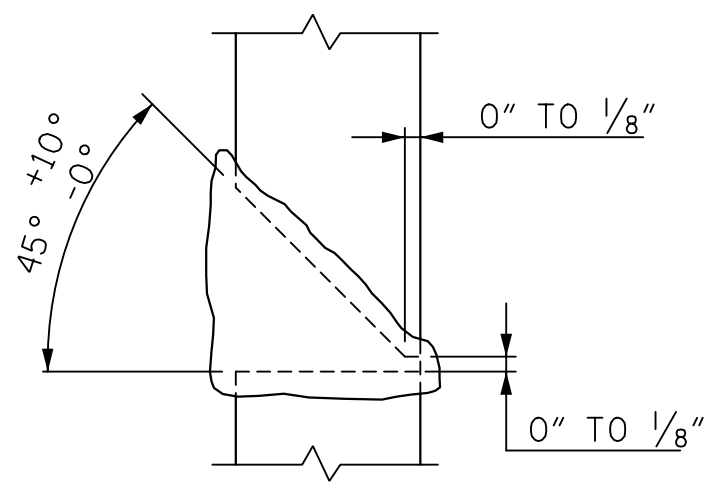
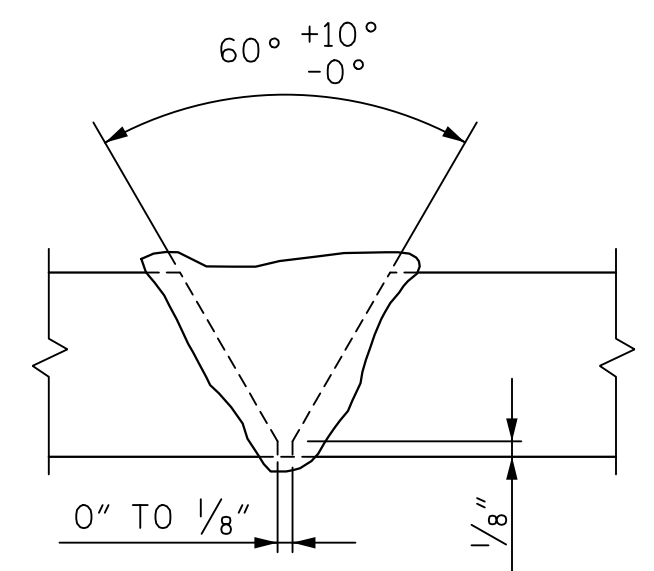


* PILE VERTICAL

* PILE HORIZONTAL OR VERTICAL

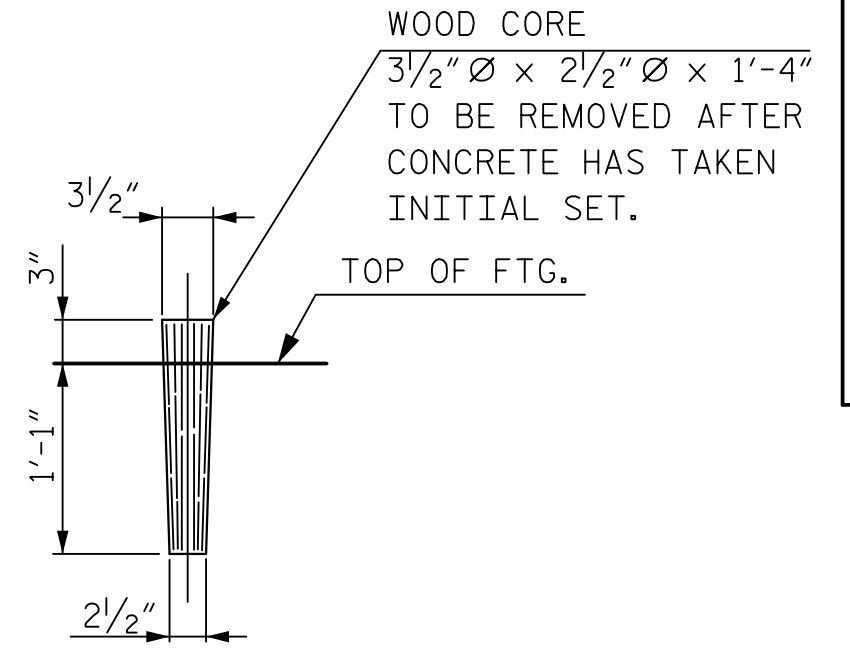


DETAIL "A"



DETAIL "B"

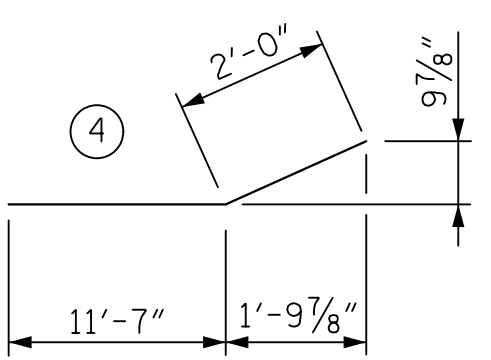
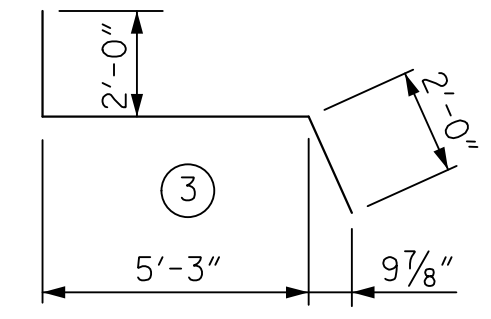
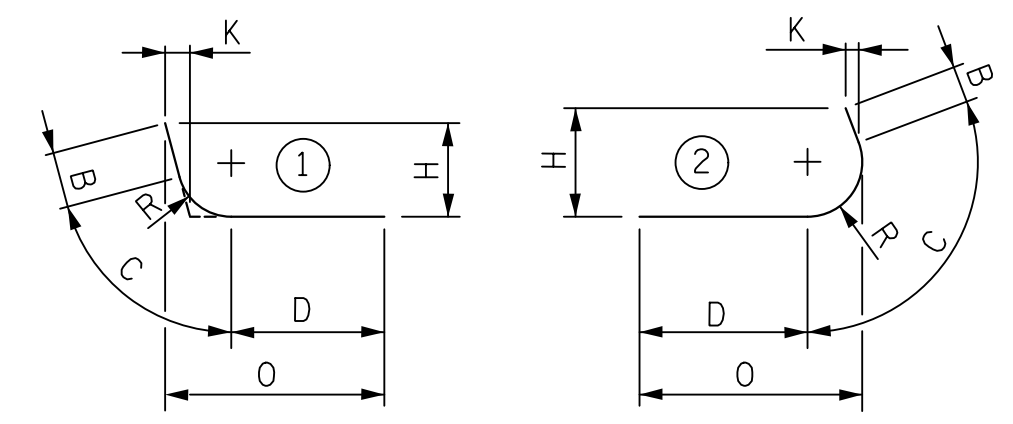
* POSITION OF PILE DURING WELDING
PILE SPLICE DETAILS



DETAIL OF WOOD CORE FOR ANCHOR BOLT HOLES

BAR TYPES							
MARK	B	C	D	H	K	O	R
H1	6'-3"	1'-9/16"	13'-1 1/2"	6'-7 3/16"	2'-11 3/4"	17'-1 1/2"	1'-6 3/8"
H2	6'-7"	2'-6 5/16"	13'-2 1/16"	7'-3 5/16"	3'-3 1/16"	17'-11 1/16"	2'-3"
H3	2'-5"	3'-0 9/16"	8'-8 7/16"	4'-4 3/16"	1'-1 1/2"	10'-2 3/16"	1'-6 3/8"
H4	2'-1"	4'-5 3/4"	8'-8 1/4"	5'-0 3/16"	1'-0 5/8"	10'-11 1/4"	2'-3"

NOTE: "D" IS PARALLEL TO WINGWALL.



T1	1'-2"	14'-8"	1'-2"
T2	1'-2"	14'-5"	1'-2"
T3	1'-2"	13'-8"	1'-2"
T4	1'-2"	11'-5"	1'-2"
T5	1'-2"	9'-3"	1'-2"
T6	1'-2"	7'-0"	1'-2"
T7	1'-2"	4'-4"	1'-2"
T8	1'-2"	4'-11"	1'-2"
T9	1'-2"	2'-9"	1'-2"
T10	1'-2"	36'-10"	1'-2"
T11	1'-2"	36'-8"	1'-2"
T12	1'-2"	36'-0"	1'-2"
T13	1'-2"	34'-1"	1'-2"
S1	11"		
S2	1'-3"		
S3	1'-9"		
S4	2'-2"		
S5	2'-7"		
S6	3'-1"		
S7	3'-6"		
S8	4'-0"		
S9	4'-5"		
S10	4'-10"		
S11	10'-1"		
S12	7'-10"		
S13	5'-7"		
S14	3'-5"		

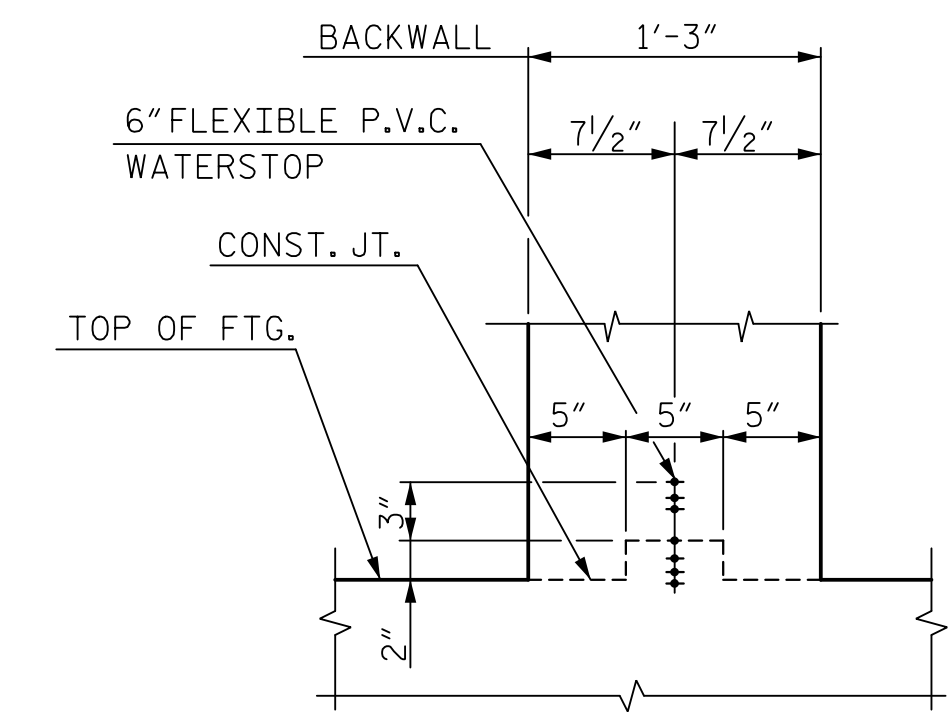
ALL BAR DIMENSIONS ARE OUT TO OUT

BILL OF REINFORCING

ABUTMENT 1											
BAR	NO.	SIZE	TYPE	LENGTH	WEIGHT	BAR	NO.	SIZE	TYPE	LENGTH	WEIGHT
H1	12	5	1	21'-2"	265	T1	58	7	6	17'-0"	2,015
H2	12	5	1	22'-4"	280	T2	2	7	6	16'-9"	68
H3	12	5	2	14'-2"	177	T3	4	7	6	16'-0"	131
H4	12	5	2	15'-3"	191	T4	4	7	6	13'-9"	112
						T5	4	7	6	11'-7"	95
K1	12	5	STR.	31'-11"	399	T6	4	7	6	9'-4"	76
K2	6	5	3	9'-3"	58	T7	2	7	6	6'-8"	27
K3	6	5	4	13'-7"	85	T8	2	7	6	7'-3"	30
						T9	2	7	6	5'-1"	21
S1	23	5	5	3'-11"	94	T10	24	7	6	39'-2"	1,921
S2	1	5	5	4'-3"	4	T11	2	7	6	39'-0"	159
S3	1	5	5	4'-9"	5	T12	2	7	6	38'-4"	157
S4	1	5	5	5'-2"	5	T13	2	7	6	36'-5"	149
S5	1	5	5	5'-7"	6	T14	2	7	STR.	33'-1"	135
S6	1	5	5	6'-1"	6	T15	2	7	STR.	36'-10"	151
S7	1	5	5	6'-6"	7	T16	2	7	STR.	15'-2"	62
S8	1	5	5	7'-0"	7	T17	2	7	STR.	13'-3"	54
S9	1	5	5	7'-5"	8	V1	46	7	STR.	8'-6"	799
S10	1	5	5	7'-10"	8	V2	23	5	STR.	8'-6"	204
S11	1	5	5	13'-1"	14	V3	29	7	STR.	14'-2"	840
S12	1	5	5	10'-10"	11	V4	57	5	STR.	14'-2"	842
S13	1	5	5	8'-7"	9	V5	6	5	STR.	10'-10"	68
S14	1	5	5	6'-5"	7	V6	14	5	STR.	8'-4"	122

QUANTITIES

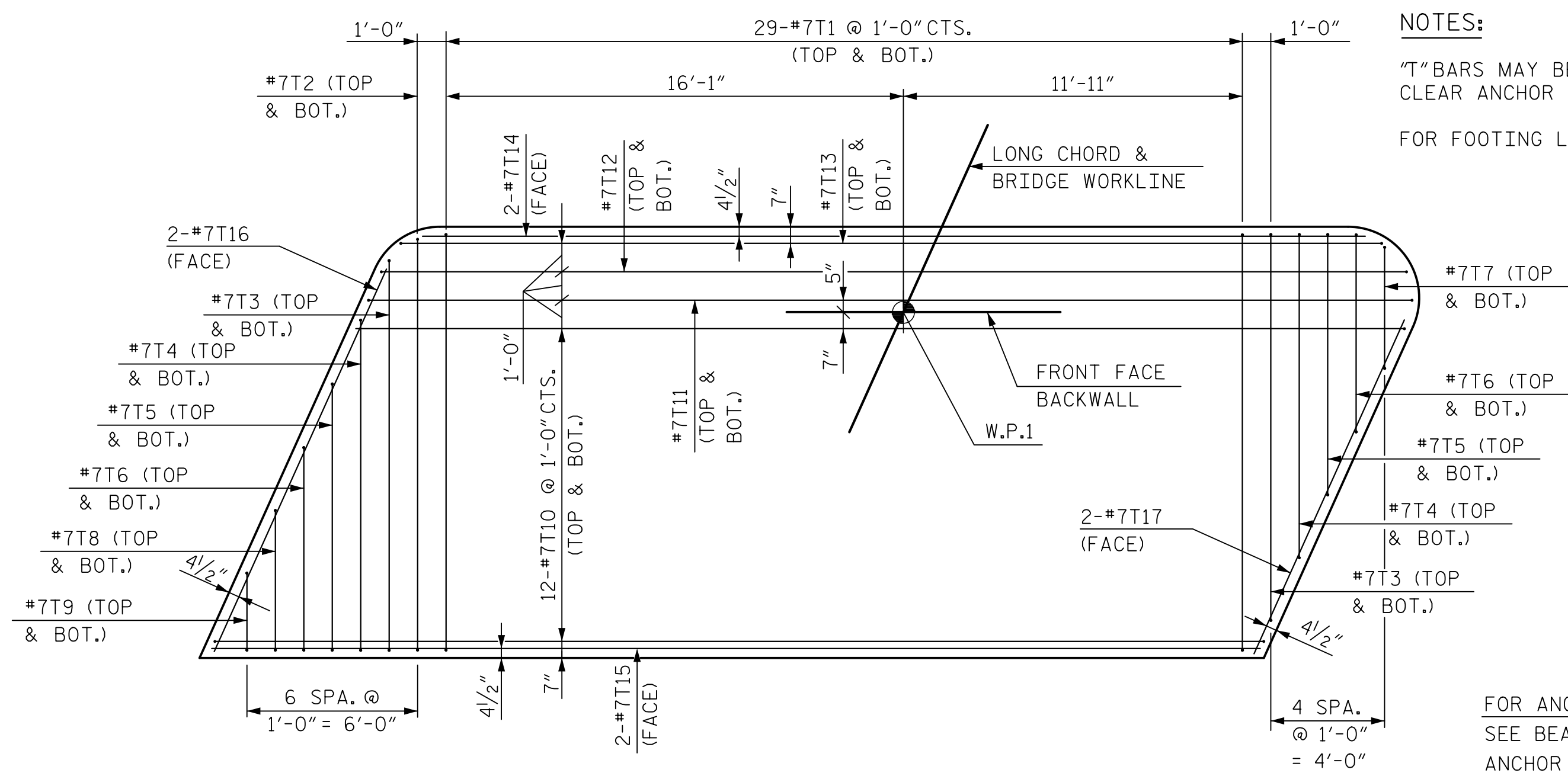
ITEM	TOTAL
REINFORCING STEEL	LBS. 9,884
CAST-IN-PLACE CONCRETE (4,000 PSI):	
POUR 1 - FOOTING	CU. YDS. 94.0
POUR 2 - BACKWALL & WINGS	CU. YDS. 29.7
TOTAL	CU. YDS. 123.7
HP 12 X 53 STEEL PILES	NO. 15
	L.F. 1,200



WATERSTOP DETAIL

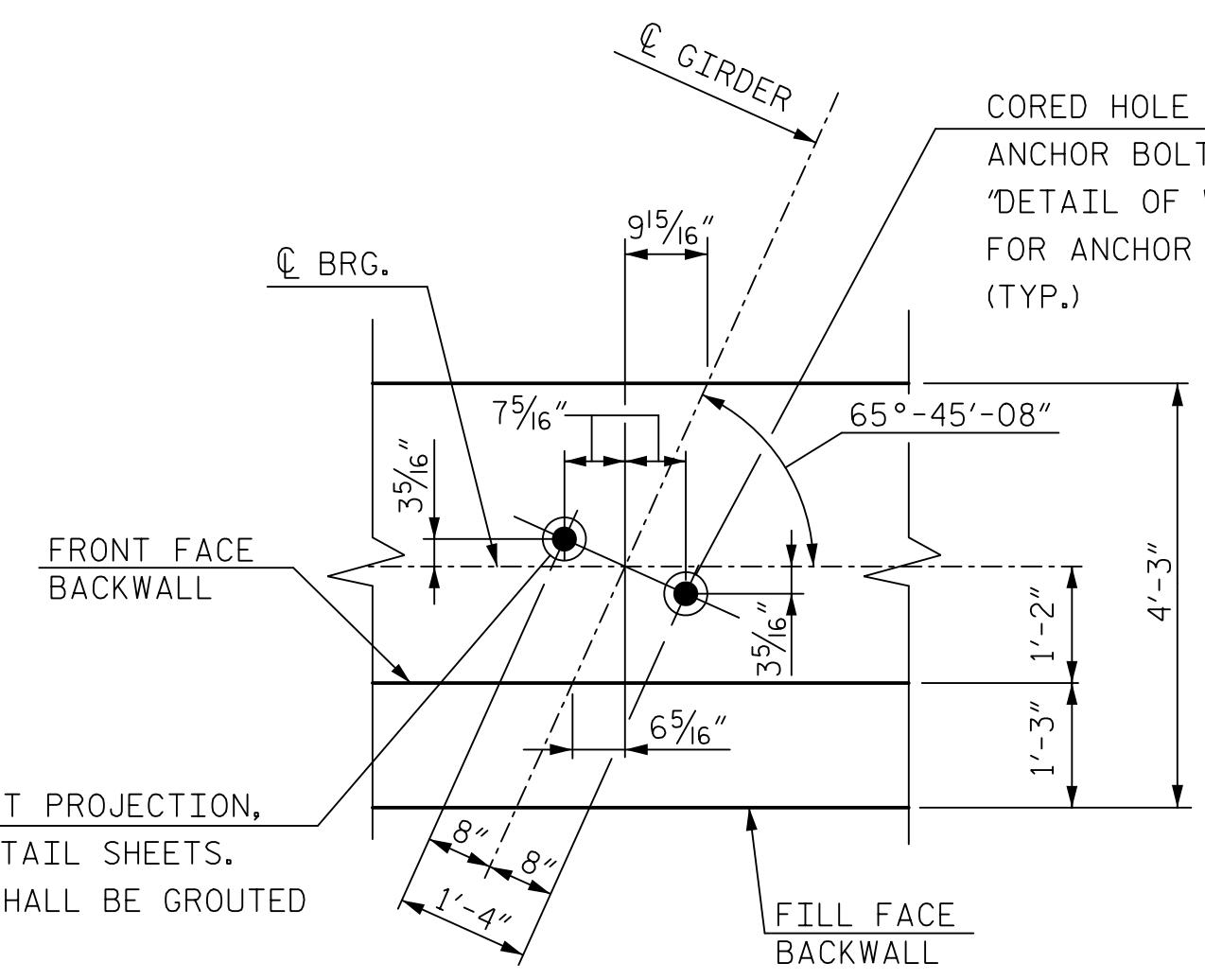
NOTES:

"T" BARS MAY BE SHIFTED SLIGHTLY AS NECESSARY TO CLEAR ANCHOR BOLTS.
FOR FOOTING LAYOUT AND DIMENSIONS, SEE SHEET 1 OF 3.

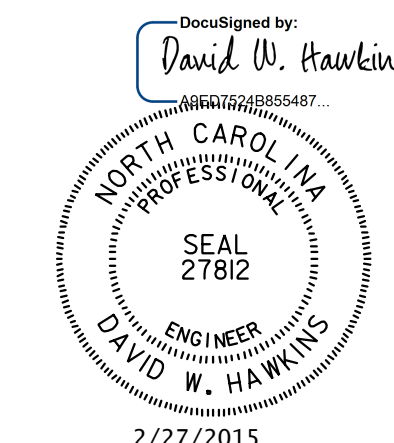
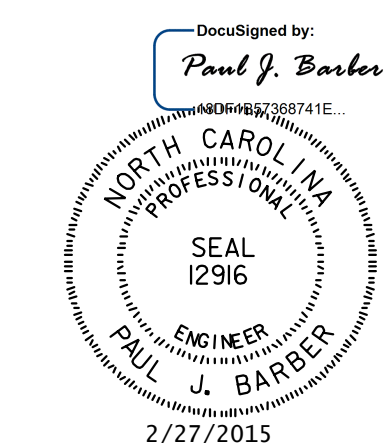


FOOTING REINFORCING PLAN

FOR ANCHOR BOLT PROJECTION, SEE BEARING DETAIL SHEETS.
ANCHOR BOLTS SHALL BE GROUTED IN PLACE.



ANCHOR BOLT LAYOUT DETAIL



PROJECT NO. P-4900A
ROBESON COUNTY
STATION: POC 38+93.36 -L-
MILE POST: 0.55
SHEET 3 OF 3

STATE OF NORTH CAROLINA
DEPARTMENT OF TRANSPORTATION
RALEIGH
SUBSTRUCTURE
ABUTMENT 1

REVISIONS						SHEET NO.
NO.	BY:	DATE:	NO.	BY:	DATE:	S-41
1			3			TOTAL SHEETS 54
2			4			

HNTB HNTB NORTH CAROLINA, P.C.
License No. C-1554
343 E. Six Forks Rd., Suite 200, Raleigh, N.C. 27609

DRAWN BY M. WRIGHT DATE 7/14
CHECKED BY D. RAGAN DATE 9/14 DWG. NO. 22