

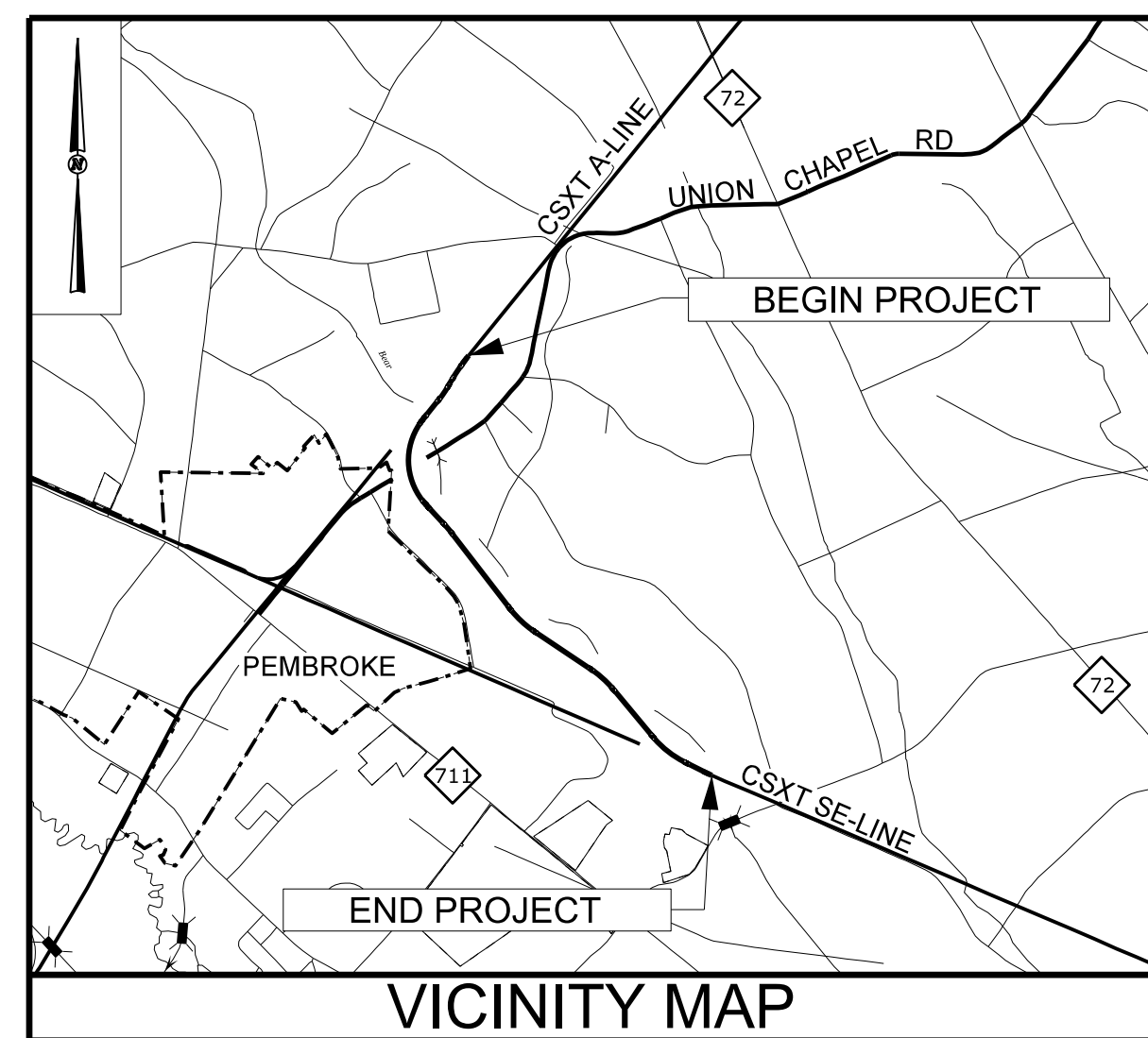
STATE	STATE PROJECT REFERENCE NO.	SHEET NO.	TOTAL SHEETS
N.C.	P-4900A	UO-01	4

STATE OF NORTH CAROLINA
NCDOT RAIL DIVISION

ROBESON COUNTY

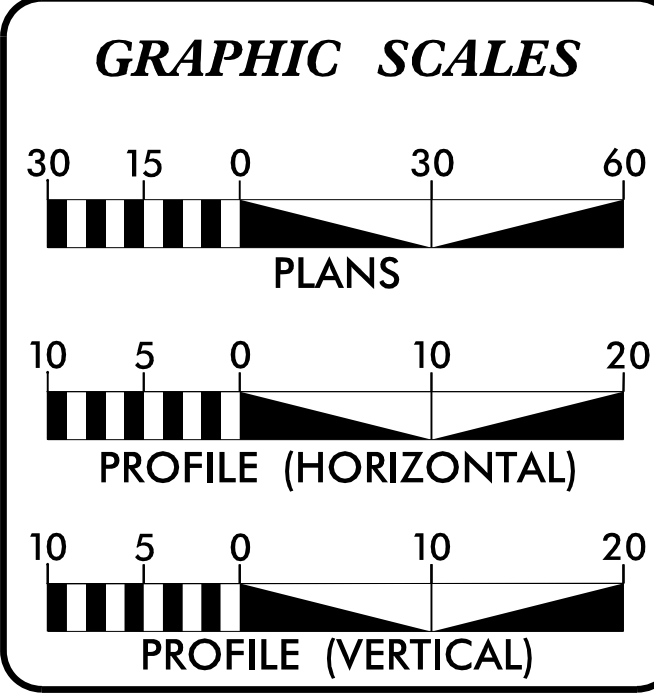
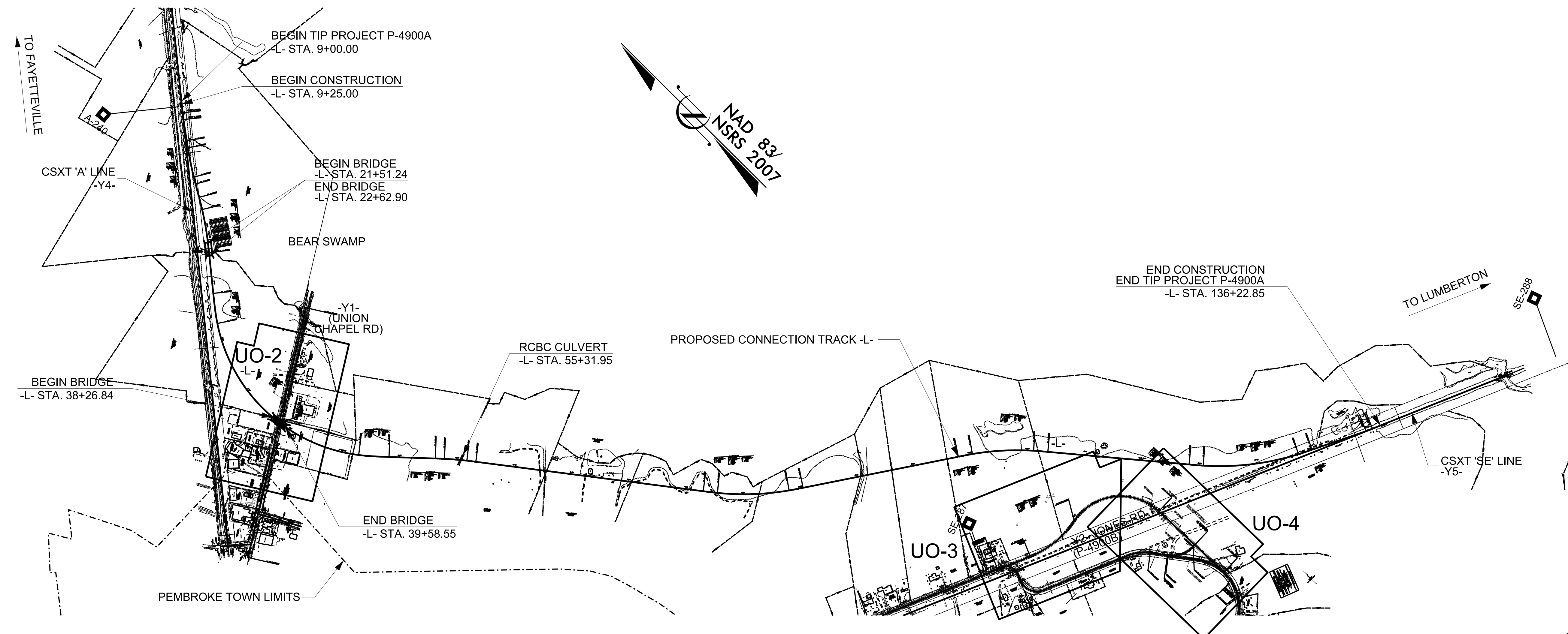
**LOCATION: RAIL GRADE SEPARATION OVER SR 1563 (UNION CHAPEL RD)
& GRADE CROSSING RELOCATION ON SR 1571 (JONES RD).**

TYPE OF WORK: UTILITY BY OTHERS



TIP PROJECT: P-4900A

CONTRACT: C203632



INDEX OF SHEETS

SHEET NO.
UO-1
UO-2
UO-3
UO-4

- UTILITY OWNERS ON THIS PROJECT:**
- POWER - DUKE ENERGY
 - POWER - LUMBEE RIVER EMC
 - PHONE - AT&T
 - CATV - TIME WARNER
 - GAS - PNG

RAIL DIVISION

NORTH CAROLINA DEPARTMENT OF TRANSPORTATION

RAIL DIVISION

UTILITY DESIGN BY:

M A Engineering Consultants, Inc.

598 East Chatham Street Suite 137 Cary, NC 27511
Phone: 919.297.0220

Prepared for:

ENGINEERING & SAFETY BRANCH

MAIL: 1556 MAIL SERVICE CENTER RALEIGH, NC 27699-1556
DELIVERY: 860 CAPITAL BOULEVARD RALEIGH, NC 27603
PHONE: (919) 715-8803
FAX: (919) 715-8804

2/16/2015 P:\JOBS\0696\022\Ufiii\Rail_Ut\Proj\P4900_UO_UO-01_tsh.dgn 9:43:37 AM