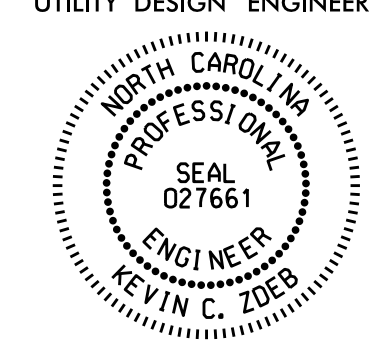
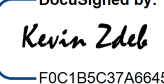
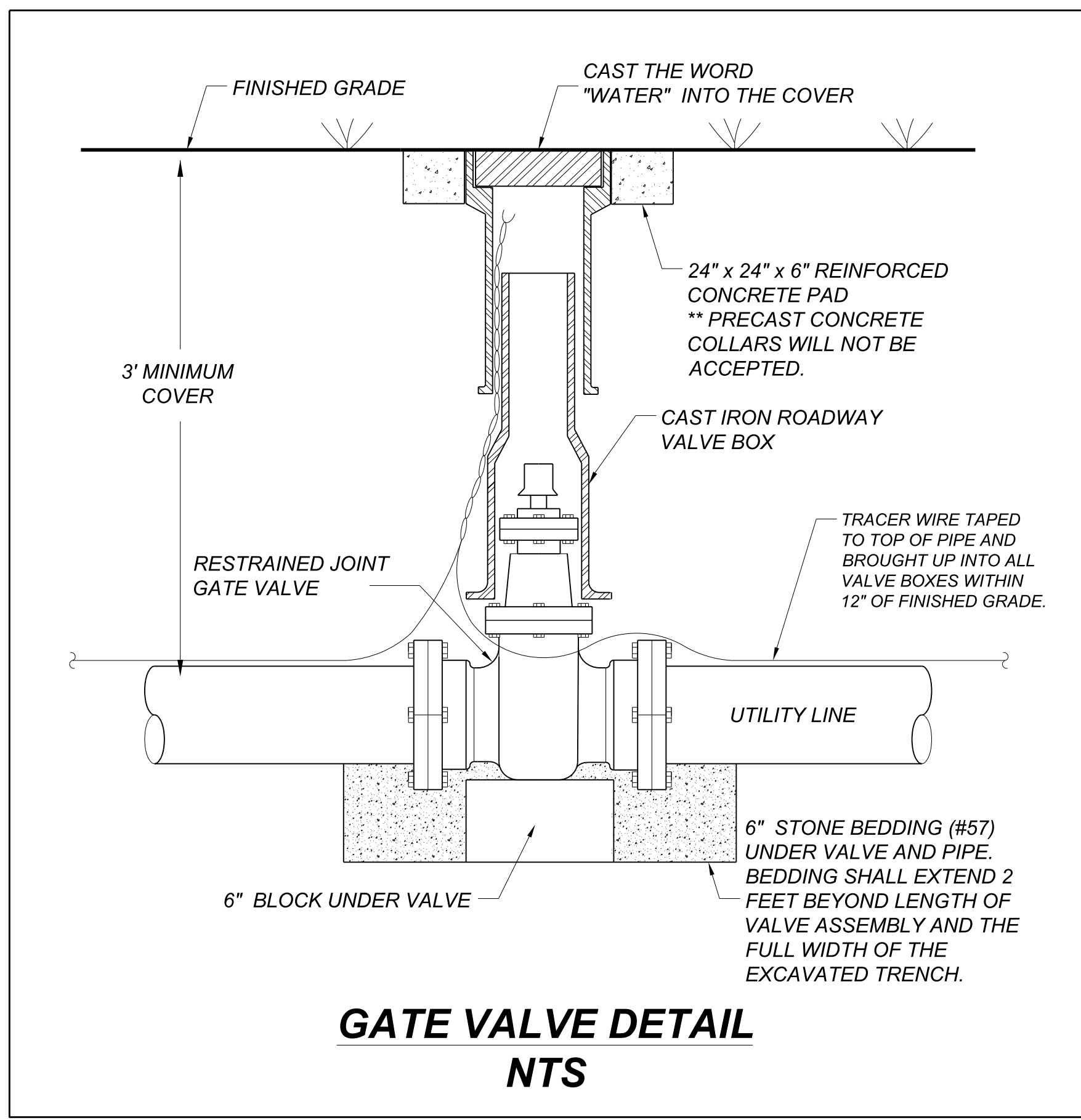
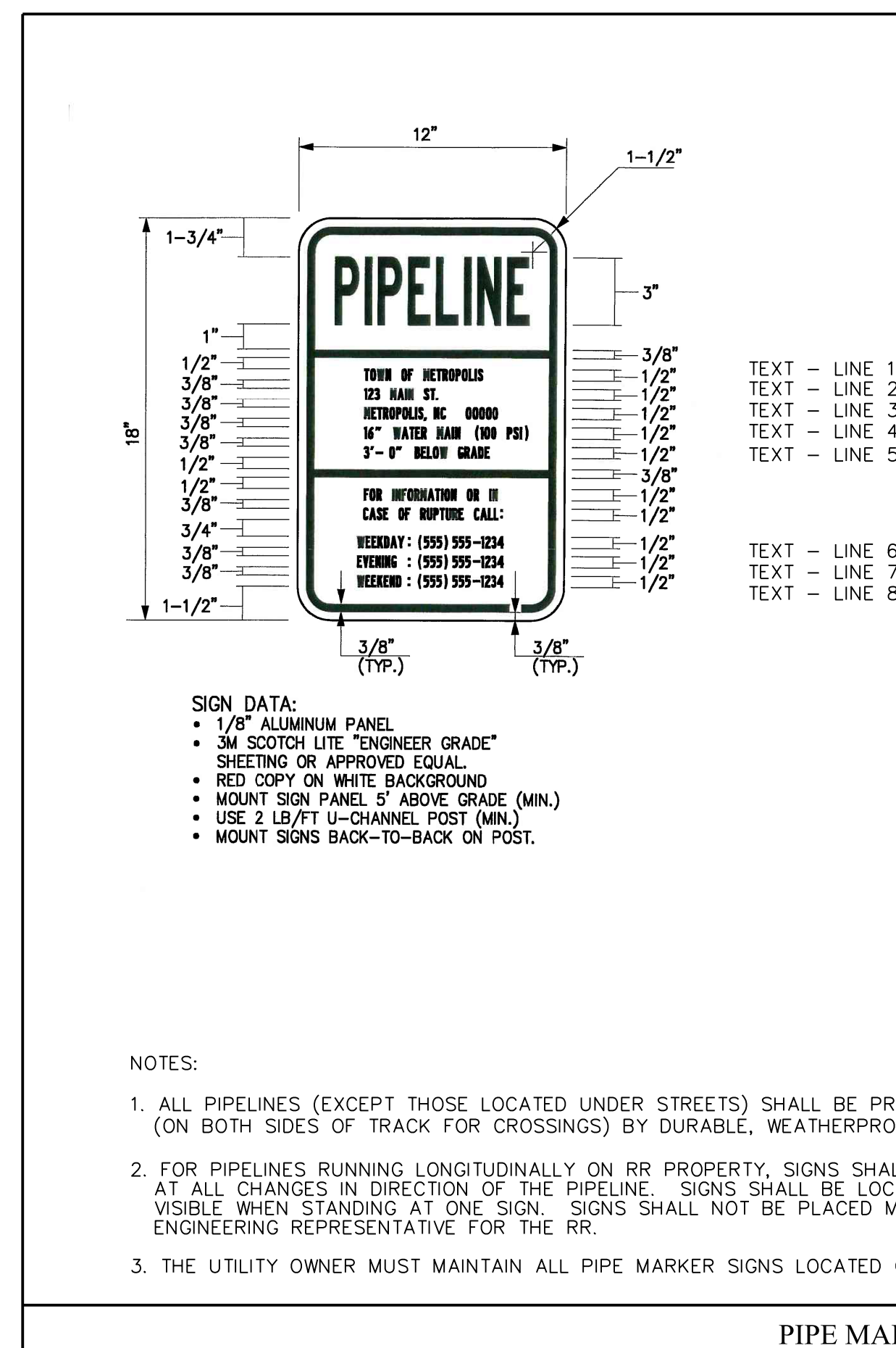


PROJECT REFERENCE NO. P-4900A	SHEET NO. UC-3D
UTILITY DESIGN ENGINEER	
	
DocuSigned by:  1/21/2015	
M A Engineering Consultants, Inc.	



**GATE VALVE DETAIL
NTS**



TEXT NOTES FOR VARIOUS UTILITY OWNERS:

A. ROBESON COUNTY.
 LINE 1: ROBESON COUNTY.
 LINE 2: 176 LEGEND ROAD
 LINE 3: LUMBERTON, NC 28358
 LINE 4: 6" WATER MAIN (150 PSI)
 LINE 5: 3'-0" BELOW GRADE
 LINE 6: (910) 671-3485
 LINE 7: (336) 671-3485
 LINE 8: (336) 671-3485

NOTES:
 1. LINE 5: CONTRACTOR SHALL NOTE THE AS-BUILT DEPTH (TO TOP OF CASING OR PIPE) AT THE SIGN LOCATION.

B. TOWN OF PEMBROKE
 LINE 1: TOWN OF PEMBROKE
 LINE 2: 100 UNION CHAPEL ROAD
 LINE 3: PEMBROKE, NC 28372
 LINE 4: 12" WATER MAIN (150 PSI)
 LINE 5: 3'-0" BELOW GRADE
 LINE 6: (910) 521-2458
 LINE 7: (910) 521-2458
 LINE 8: (910) 521-2458

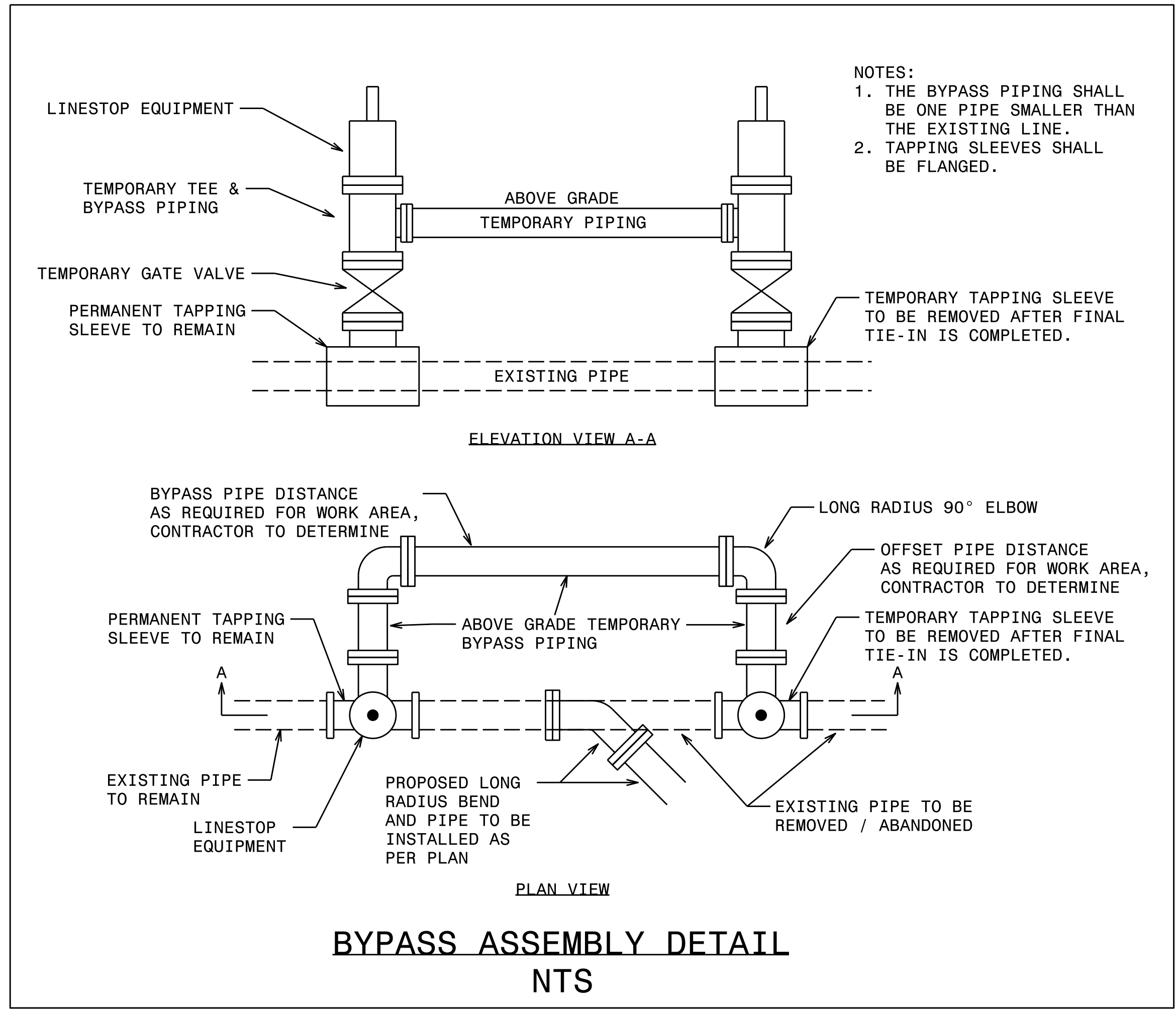
NOTES:
 1. LINE 5: CONTRACTOR SHALL NOTE THE AS-BUILT DEPTH (TO TOP OF CASING OR PIPE) AT THE SIGN LOCATION.

C. TOWN OF PEMBROKE
 LINE 1: TOWN OF PEMBROKE
 LINE 2: 100 UNION CHAPEL ROAD
 LINE 3: PEMBROKE, NC 28372
 LINE 4: 4" FORCE MAIN (150 PSI)
 LINE 5: 3'-0" BELOW GRADE
 LINE 6: (910) 521-2458
 LINE 7: (910) 521-2458
 LINE 8: (910) 521-2458

NOTES:
 1. LINE 5: CONTRACTOR SHALL NOTE THE AS-BUILT DEPTH (TO TOP OF CASING OR PIPE) AT THE SIGN LOCATION.

NOTES:
 1. ALL PIPELINES (EXCEPT THOSE LOCATED UNDER STREETS) SHALL BE PROMINENTLY MARKED AT THE RIGHT-OF-WAY LINES (ON BOTH SIDES OF TRACK FOR CROSSINGS) BY DURABLE, WEATHERPROOF SIGNS LOCATED OVER THE CENTERLINE OF THE PIPE.
 2. FOR PIPELINES RUNNING LONGITUDINALLY ON RR PROPERTY, SIGNS SHALL BE PLACED OVER THE PIPE (OR OFFSET AND APPROPRIATELY MARKED) AT ALL CHANGES IN DIRECTION OF THE PIPELINE. SIGNS SHALL BE LOCATED SO THAT THE NEXT ADJACENT MARKER IN EITHER DIRECTION IS VISIBLE WHEN STANDING AT ONE SIGN. SIGNS SHALL NOT BE PLACED MORE THAN 500 FEET APART UNLESS OTHERWISE SPECIFIED BY THE ENGINEERING REPRESENTATIVE FOR THE RR.
 3. THE UTILITY OWNER MUST MAINTAIN ALL PIPE MARKER SIGNS LOCATED ON THE RR RIGHT-OF-WAY.

PIPE MARKER SIGN



**BYPASS ASSEMBLY DETAIL
NTS**

I:\31005\0696\022\Util\Titles\Ra1.L\U\Proj\4900.UC-UC-03D.deta1.dgn
 5/17/2015 2:07:03 PM