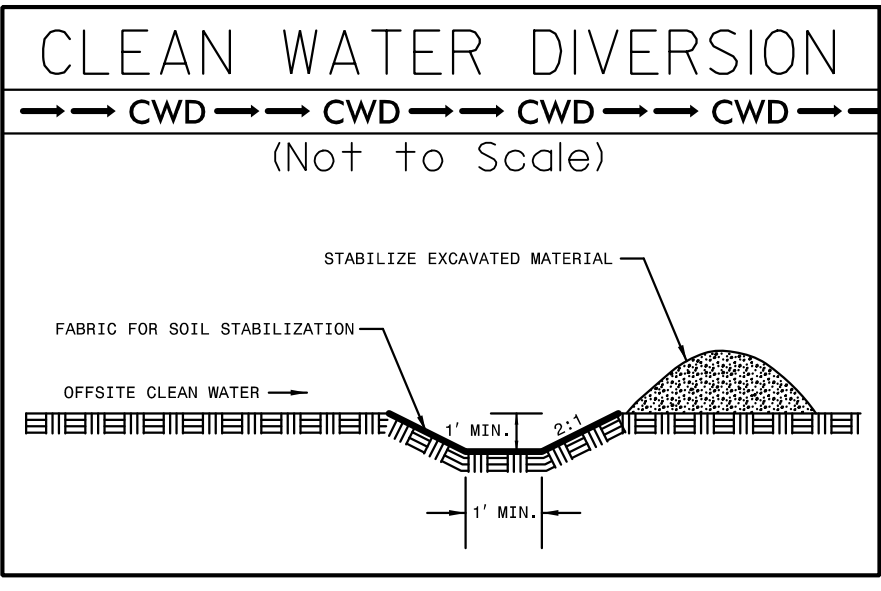
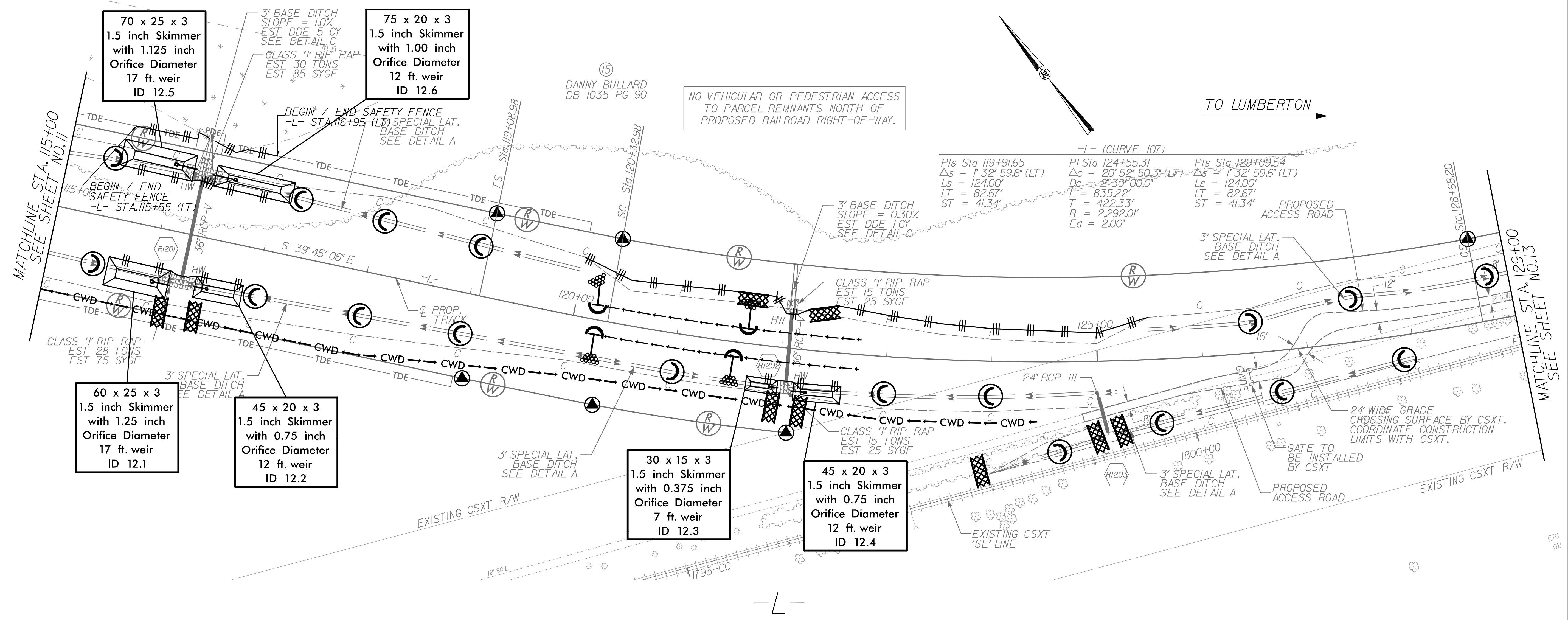


DATE: JANUARY 19, 2015



TO FAYETTEVILLE

TO LUMBERTON



70 x 25 x 3
 1.5 inch Skimmer
 with 1.125 inch
 Orifice Diameter
 17 ft. weir
 ID 12.5

75 x 20 x 3
 1.5 inch Skimmer
 with 1.00 inch
 Orifice Diameter
 12 ft. weir
 ID 12.6

60 x 25 x 3
 1.5 inch Skimmer
 with 1.25 inch
 Orifice Diameter
 17 ft. weir
 ID 12.1

45 x 20 x 3
 1.5 inch Skimmer
 with 0.75 inch
 Orifice Diameter
 12 ft. weir
 ID 12.2

30 x 15 x 3
 1.5 inch Skimmer
 with 0.375 inch
 Orifice Diameter
 7 ft. weir
 ID 12.3

45 x 20 x 3
 1.5 inch Skimmer
 with 0.75 inch
 Orifice Diameter
 12 ft. weir
 ID 12.4

-L- (CURVE 107)
 PIs Sta 119+91.65 PI Sta 124+55.31 PIs Sta 129+09.54
 $\Delta s = 1' 32' 59.6''$ (LT) $\Delta c = 20' 52' 50.3''$ (LF) $\Delta s = 1' 32' 59.6''$ (LT)
 $L_s = 124.00'$ $D_c = 2' 30'' 00.0''$ $L_s = 124.00'$
 $LT = 82.67'$ $L = 835.22'$ $LT = 82.67'$
 $ST = 41.34'$ $T = 422.33'$ $ST = 41.34'$
 $R = 2,292.01'$ $Ea = 2.00'$