

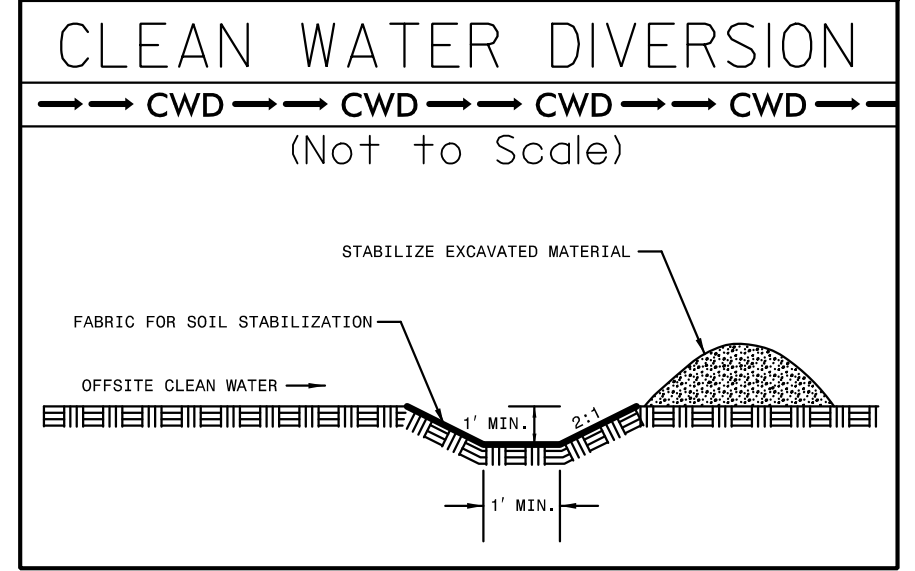
PROJECT REFERENCE NO.		SHEET NO.	
P-4900A		EC-20/CONST.10	
RW SHEET NO.			
RAILROAD DESIGN ENGINEER		HYDRAULICS ENGINEER	

DATE: JANUARY 19, 2015

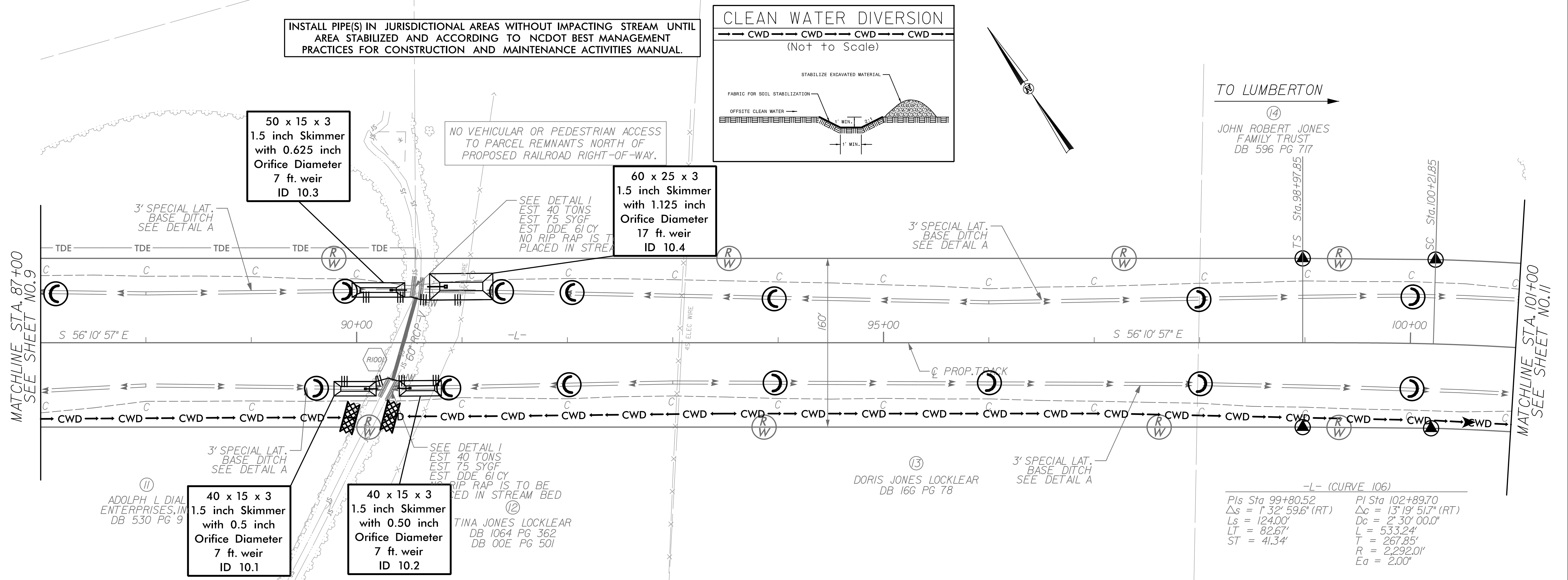
TO FAYETTEVILLE

TO LUMBERTON

INSTALL PIPE(S) IN JURISDICTIONAL AREAS WITHOUT IMPACTING STREAM UNTIL AREA STABILIZED AND ACCORDING TO NCDOT BEST MANAGEMENT PRACTICES FOR CONSTRUCTION AND MAINTENANCE ACTIVITIES MANUAL.



NO VEHICULAR OR PEDESTRIAN ACCESS TO PARCEL REMNANTS NORTH OF PROPOSED RAILROAD RIGHT-OF-WAY.



MATCHLINE STA. 87+00  
SEE SHEET NO.9

MATCHLINE STA. 101+00  
SEE SHEET NO.11

50 x 15 x 3  
1.5 inch Skimmer  
with 0.625 inch  
Orifice Diameter  
7 ft. weir  
ID 10.3

60 x 25 x 3  
1.5 inch Skimmer  
with 1.125 inch  
Orifice Diameter  
17 ft. weir  
ID 10.4

40 x 15 x 3  
1.5 inch Skimmer  
with 0.5 inch  
Orifice Diameter  
7 ft. weir  
ID 10.1

40 x 15 x 3  
1.5 inch Skimmer  
with 0.50 inch  
Orifice Diameter  
7 ft. weir  
ID 10.2

-L- (CURVE 106)  
Pls Sta 99+80.52 PI Sta 102+89.70  
 $\Delta s = 1' 32' 59.6''$  (RT)  $\Delta c = 13' 19' 51.7''$  (RT)  
Ls = 124.00' L = 533.24'  
LT = 82.67' T = 267.85'  
ST = 41.34' R = 2,292.01'  
Ea = 2.00'

-L-