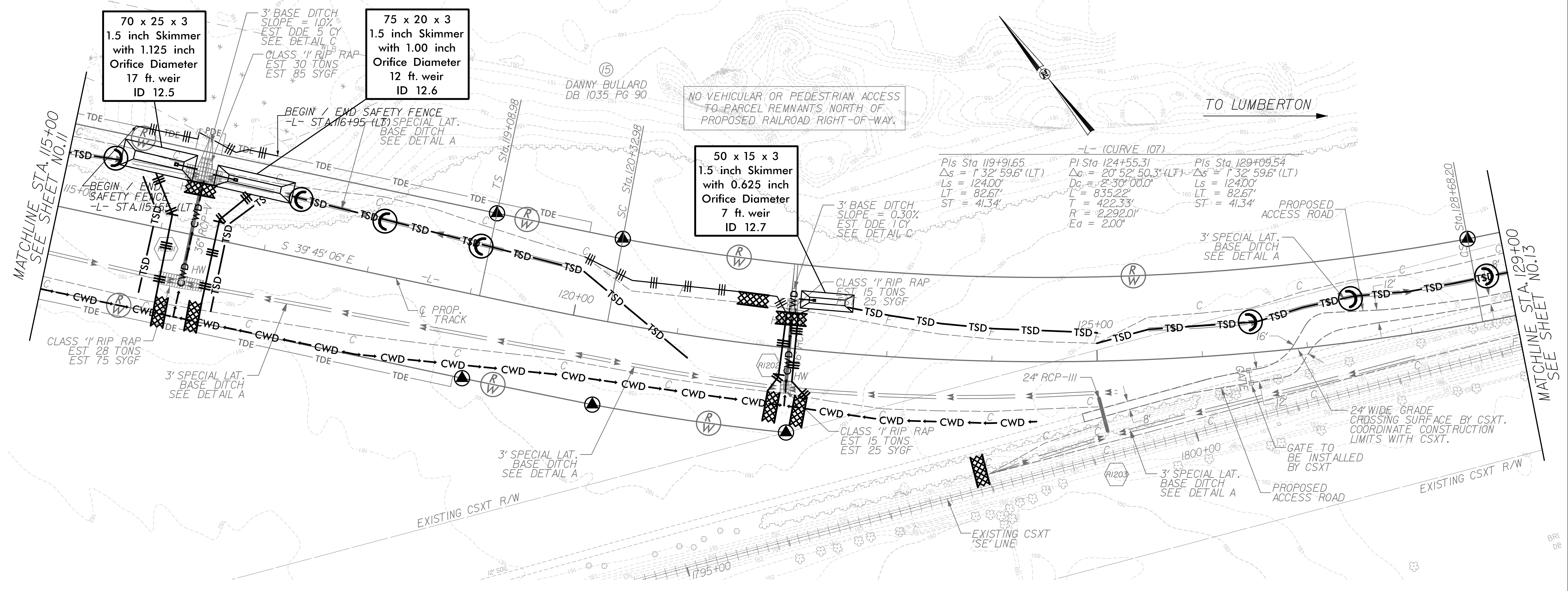


TO FAYETTEVILLE

TO LUMBERTON



70 x 25 x 3  
 1.5 inch Skimmer  
 with 1.125 inch  
 Orifice Diameter  
 17 ft. weir  
 ID 12.5

75 x 20 x 3  
 1.5 inch Skimmer  
 with 1.00 inch  
 Orifice Diameter  
 12 ft. weir  
 ID 12.6

50 x 15 x 3  
 1.5 inch Skimmer  
 with 0.625 inch  
 Orifice Diameter  
 7 ft. weir  
 ID 12.7

NO VEHICULAR OR PEDESTRIAN ACCESS  
 TO PARCEL REMNANTS NORTH OF  
 PROPOSED RAILROAD RIGHT-OF-WAY.

-(CURVE 107)  
 PIs Sta 119+91.65 PI Sta 124+55.31 PI Sta 129+09.54  
 $\Delta s = 1' 32' 59.6''$  (LT)  $\Delta s = 20' 52' 50.34''$  (LF)  $\Delta s = 1' 32' 59.6''$  (LT)  
 $Ls = 124.00'$   $Dc = 2' 30'' 00.0'$   $Ls = 124.00'$   
 $LT = 82.67'$   $L = 835.22'$   $LT = 82.67'$   
 $ST = 41.34'$   $T = 422.33'$   $ST = 41.34'$   
 $R = 2292.01'$   $Ea = 2.00'$