

P-4900A (PEMBROKE) CULVERT PHASING BEAR SWAMP TRIBUTARY

HNTB HNTB NORTH CAROLINA, P.C.
343 E. Six Forks Road, Suite 200
Raleigh, North Carolina 27609
NC License No: C-1554

PROJECT REFERENCE NO. SHEET NO.

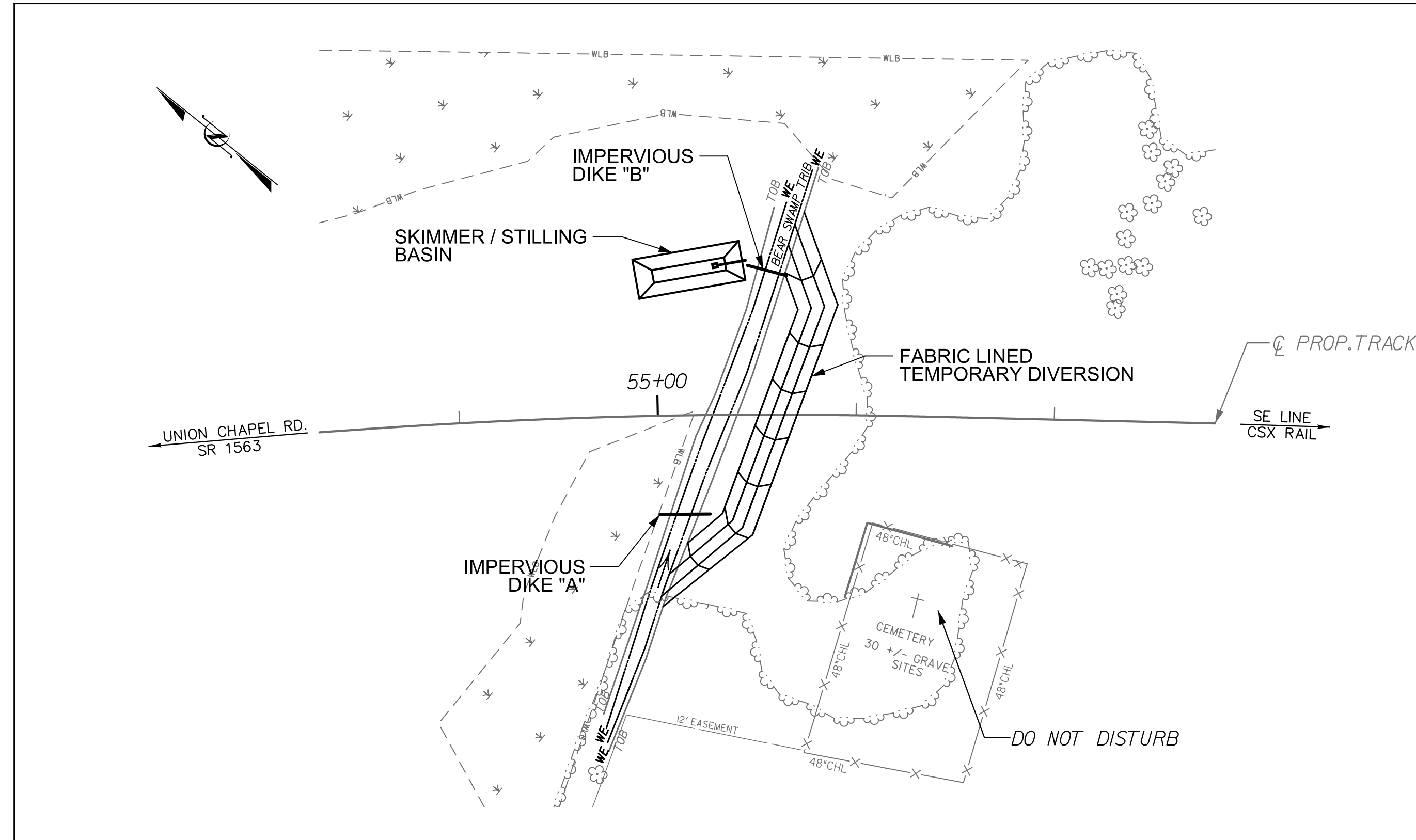
P-4900A EC-07A

RW SHEET NO.

DATE: January 19, 2015

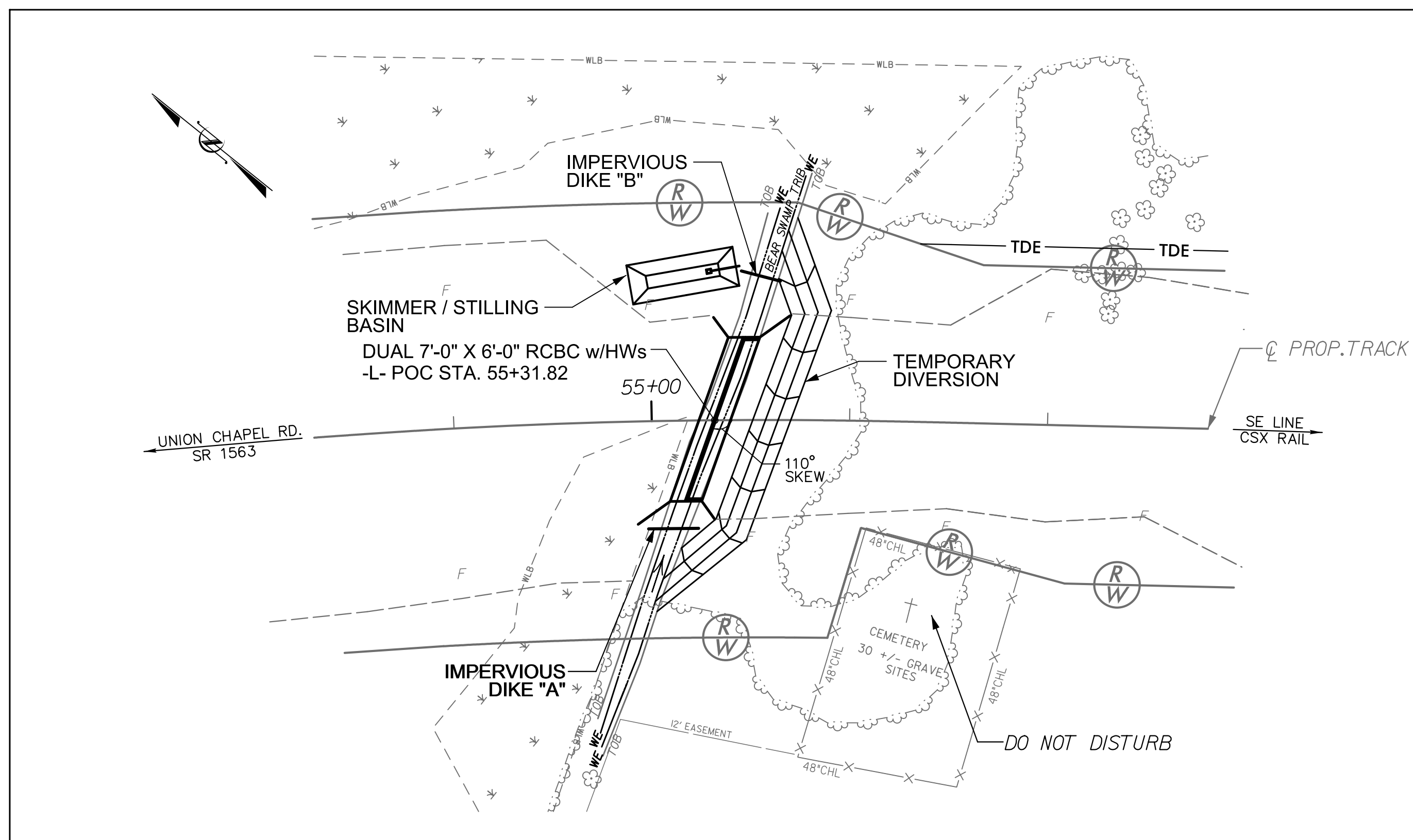
RAILROAD DESIGN ENGINEER

HYDRAULICS ENGINEER



PHASE I

1. INSTALL IMPERVIOUS DIKES "A" AND "B" AS SHOWN.
2. INSTALL TEMPORARY DIVERSION, WITH 2' BASE AND 2:1 SIDE SLOPES, AS SHOWN AND DIVERT BEAR SWAMP TRIBUTARY AROUND THE CONSTRUCTION AREA. LINE TEMPORARY DIVERSION WITH SOIL STABILIZATION GEOTEXTILE FABRIC.
3. DEWATER CONSTRUCTION AREA INTO SPECIAL SKIMMER / STILLING BASIN.



PHASE II

1. CONSTRUCT REINFORCED CONCRETE BOX CULVERT. LINE DOWNSTREAM CHANNEL BANKS WITH CLASS I RIP RAP AS SHOWN.
2. UPON COMPLETION OF CULVERT, REMOVE TEMPORARY DIRVERSION AND DIKES.

REVISIONS

REVISION #1 DATED 7/31/15: NEW SHEET