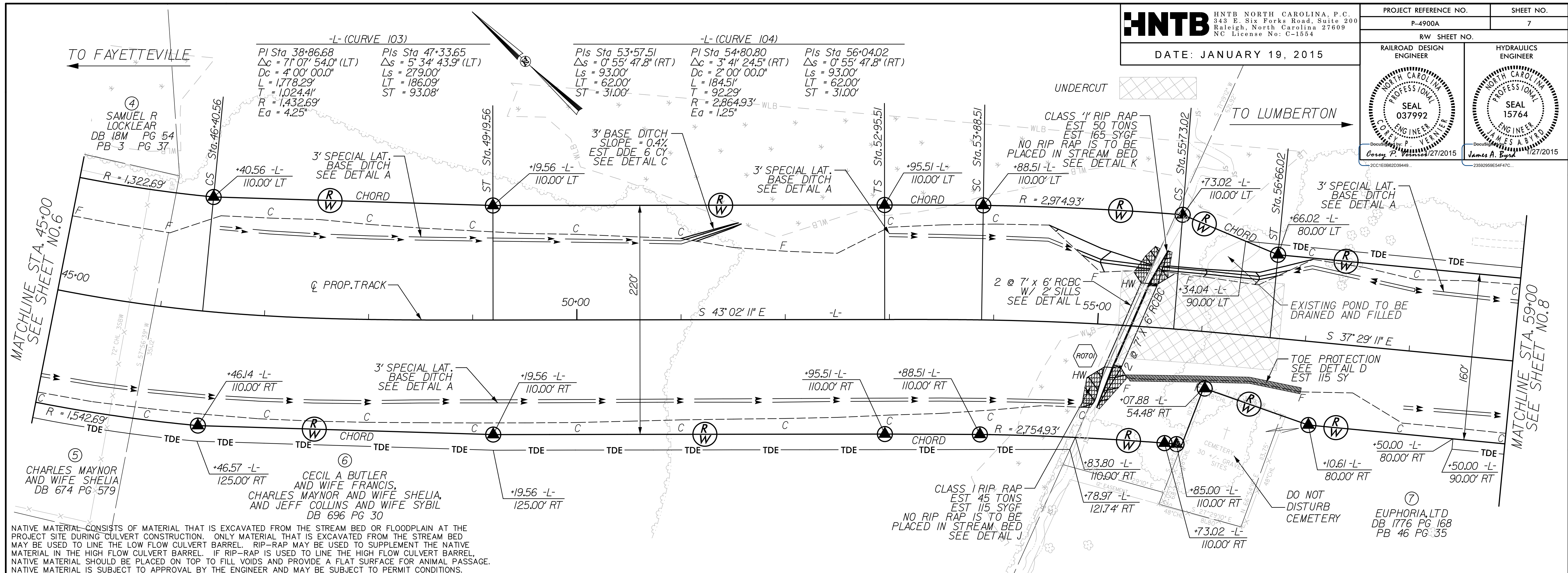
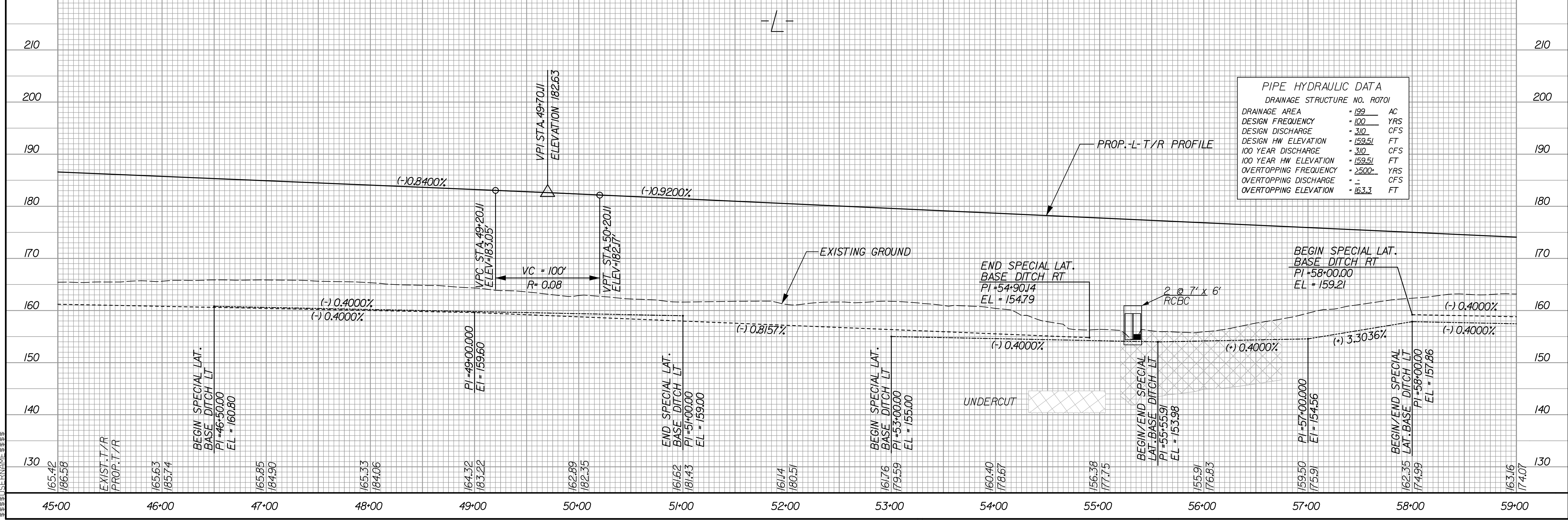


PROJECT REFERENCE NO. P-4900A	SHEET NO. 7
RW SHEET NO.	
RAILROAD DESIGN ENGINEER	HYDRAULICS ENGINEER



NATIVE MATERIAL CONSISTS OF MATERIAL THAT IS EXCAVATED FROM THE STREAM BED OR FLOODPLAIN AT THE PROJECT SITE DURING CULVERT CONSTRUCTION. ONLY MATERIAL THAT IS EXCAVATED FROM THE STREAM BED MAY BE USED TO LINE THE LOW FLOW CULVERT BARREL. RIP-RAP MAY BE USED TO SUPPLEMENT THE NATIVE MATERIAL IN THE HIGH FLOW CULVERT BARREL. IF RIP-RAP IS USED TO LINE THE HIGH FLOW CULVERT BARREL, NATIVE MATERIAL SHOULD BE PLACED ON TOP TO FILL VOIDS AND PROVIDE A FLAT SURFACE FOR ANIMAL PASSAGE. NATIVE MATERIAL IS SUBJECT TO APPROVAL BY THE ENGINEER AND MAY BE SUBJECT TO PERMIT CONDITIONS.



9:29:07 AM
 W:\embrace\psh_07.dgn
 \$\$\$\$
 \$\$\$\$
 \$\$\$\$