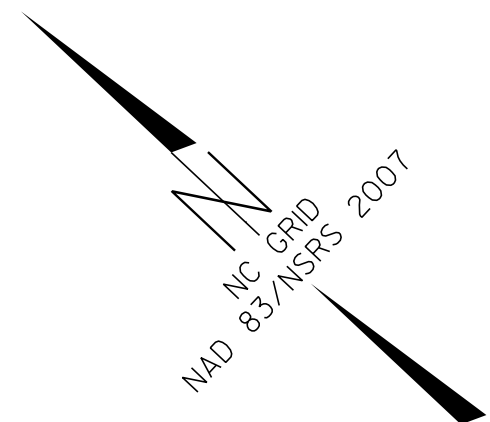


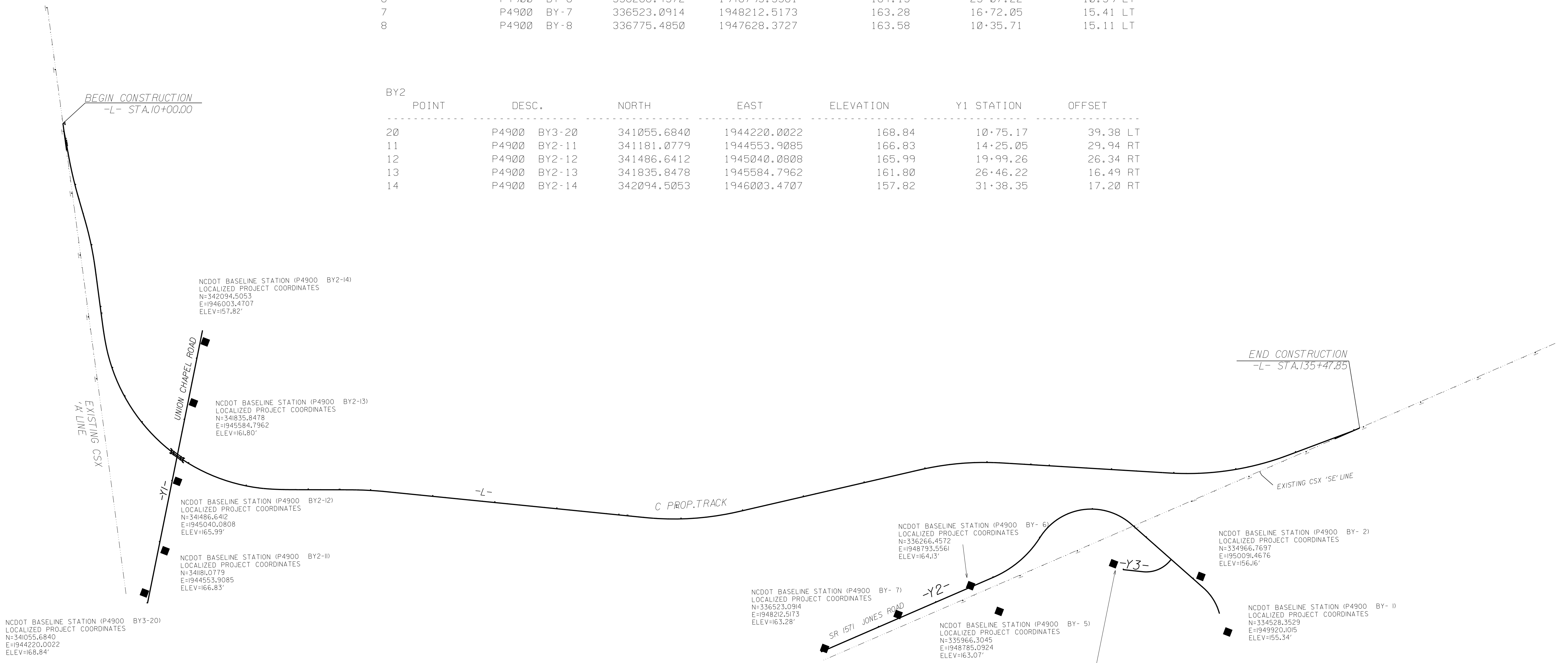
SURVEY CONTROL SHEET P-4900A

PROJECT REFERENCE NO. P-4900A	SHEET NO. I-B
Location and Surveys	



BY	POINT	DESC.	NORTH	EAST	ELEVATION	Y2 STATION	OFFSET
	1	P4900 BY-1	334528.3529	1949920.1015	155.34	OUTSIDE PROJECT LIMITS	
	2	P4900 BY-2	334966.7697	1950091.4676	156.16	45+40.79	35.04 LT
	3	P4900 BY-3	335534.4356	1949685.3764	163.79	39+60.82	353.28 RT
	4	P4900 BY-4	335809.4216	1949072.9187	163.84	26+78.72	323.53 RT
	5	P4900 BY-5	335966.3045	1948785.0924	163.07	24+18.64	268.25 RT
	6	P4900 BY-6	336266.4572	1948793.5561	164.13	23+07.22	10.59 LT
	7	P4900 BY-7	336523.0914	1948212.5173	163.28	16+72.05	15.41 LT
	8	P4900 BY-8	336775.4850	1947628.3727	163.58	10+35.71	15.11 LT

BY2	POINT	DESC.	NORTH	EAST	ELEVATION	Y1 STATION	OFFSET
	20	P4900 BY3-20	341055.6840	1944220.0022	168.84	10+75.17	39.38 LT
	11	P4900 BY2-11	341181.0779	1944553.9085	166.83	14+25.05	29.94 RT
	12	P4900 BY2-12	341486.6412	1945040.0808	165.99	19+99.26	26.34 RT
	13	P4900 BY2-13	341835.8478	1945584.7962	161.80	26+46.22	16.49 RT
	14	P4900 BY2-14	342094.5053	1946003.4707	157.82	31+38.35	17.20 RT



NCDOT BASELINE STATION (P4900 BY3-20)
LOCALIZED PROJECT COORDINATES
N=341055.6840
E=1944220.0022
ELEV=168.84'

NCDOT BASELINE STATION (P4900 BY2-14)
LOCALIZED PROJECT COORDINATES
N=342094.5053
E=1946003.4707
ELEV=157.82'

NCDOT BASELINE STATION (P4900 BY2-13)
LOCALIZED PROJECT COORDINATES
N=341835.8478
E=1945584.7962
ELEV=161.80'

NCDOT BASELINE STATION (P4900 BY2-12)
LOCALIZED PROJECT COORDINATES
N=341486.6412
E=1945040.0808
ELEV=165.99'

NCDOT BASELINE STATION (P4900 BY2-11)
LOCALIZED PROJECT COORDINATES
N=341181.0779
E=1944553.9085
ELEV=166.83'

NCDOT BASELINE STATION (P4900 BY- 7)
LOCALIZED PROJECT COORDINATES
N=336523.0914
E=1948212.5173
ELEV=163.28'

NCDOT BASELINE STATION (P4900 BY- 8)
LOCALIZED PROJECT COORDINATES
N=336775.4850
E=1947628.3727
ELEV=163.58'

NCDOT BASELINE STATION (P4900 BY- 6)
LOCALIZED PROJECT COORDINATES
N=336266.4572
E=1948793.5561
ELEV=164.13'

NCDOT BASELINE STATION (P4900 BY- 5)
LOCALIZED PROJECT COORDINATES
N=335966.3045
E=1948785.0924
ELEV=163.07'

NCDOT BASELINE STATION (P4900 BY- 3)
LOCALIZED PROJECT COORDINATES
N=335534.4356
E=1949685.3764
ELEV=163.79'

NCDOT BASELINE STATION (P4900 BY- 2)
LOCALIZED PROJECT COORDINATES
N=334966.7697
E=1950091.4676
ELEV=156.16'

NCDOT BASELINE STATION (P4900 BY- 1)
LOCALIZED PROJECT COORDINATES
N=334528.3529
E=1949920.1015
ELEV=155.34'

DATUM DESCRIPTION

THE LOCALIZED COORDINATE SYSTEM DEVELOPED FOR THIS PROJECT IS BASED ON THE STATE PLANE COORDINATES ESTABLISHED BY NCGS FOR MONUMENT "PROSPECT" WITH NAD 83/NSRS 2007 STATE PLANE GRID COORDINATES OF NORTHING: 372029.5512(ft) EASTING: 1938868.6682(ft) ELEVATION: 198.92(ft)

THE AVERAGE COMBINED GRID FACTOR USED ON THIS PROJECT (GROUND TO GRID) IS: 0.99991840

THE N.C. LAMBERT GRID BEARING AND LOCALIZED HORIZONTAL GROUND DISTANCE FROM "PROSPECT" TO L- STATION 10+00.00 IS N 15° 18' 43.77" W 28949.9515'

ALL LINEAR DIMENSIONS ARE LOCALIZED HORIZONTAL DISTANCES VERTICAL DATUM USED IS NAVD 88

- NOTES:**
- THE CONTROL DATA FOR THIS PROJECT CAN BE FOUND ELECTRONICALLY BY SELECTING PROJECT CONTROL DATA AT: [HTTPS://CONNECT.NCDOT.GOV/RESOURCES/LOCATION/](https://connect.ncdot.gov/resources/location/) THE FILES TO BE FOUND ARE AS FOLLOWS: TIP###_LS_CONTROL_DATE.HTML
 - SITE CALIBRATION INFORMATION HAS NOT BEEN PROVIDED FOR THIS PROJECT. IF FURTHER INFORMATION IS NEEDED, PLEASE CONTACT THE LOCATION AND SURVEYS UNIT.
 - INDICATES GEODETIC CONTROL MONUMENTS USED OR SET FOR HORIZONTAL PROJECT CONTROL BY THE NCDOT LOCATION AND SURVEYS UNIT. PROJECT CONTROL ESTABLISHED USING GLOBAL POSITIONING SYSTEM. NETWORK ESTABLISHED FROM EXISTING HARN MONUMENTATION SEE GPS CALIBRATION SHEET FOR HORIZONTAL AND VERTICAL COORDINATE VALUES.

NOTE: DRAWING NOT TO SCALE