

**This electronic collection of documents is provided
for the convenience of the user
and is Not a Certified Document –**

**The documents contained herein were originally issued
and sealed by the individuals whose names and license
numbers appear on each page, on the dates appearing
with their signature on that page.**

**This file or an individual page
shall not be considered a certified document.**

TIP PROJECT: U-3315

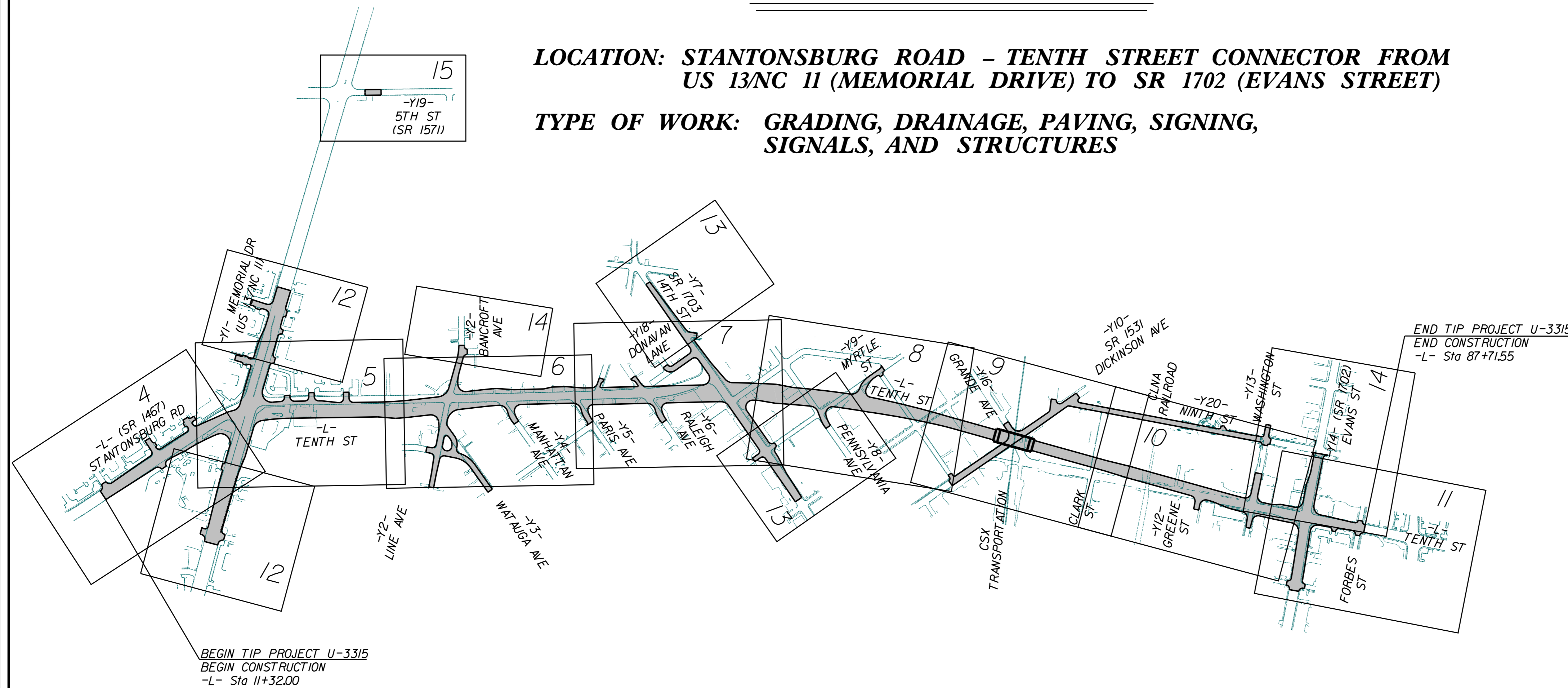
CONTRACT: C203513

J. Jason Pace
 LEVEL IIIA NAME
 3579
 LEVEL IIIA CERTIFICATION NO.

STATE OF NORTH CAROLINA
 DIVISION OF HIGHWAYS
 PLAN FOR PROPOSED
 HIGHWAY EROSION CONTROL
 PITT COUNTY

**LOCATION: STANTONSBURG ROAD - TENTH STREET CONNECTOR FROM
 US 13/NC 11 (MEMORIAL DRIVE) TO SR 1702 (EVANS STREET)**

**TYPE OF WORK: GRADING, DRAINAGE, PAVING, SIGNING,
 SIGNALS, AND STRUCTURES**

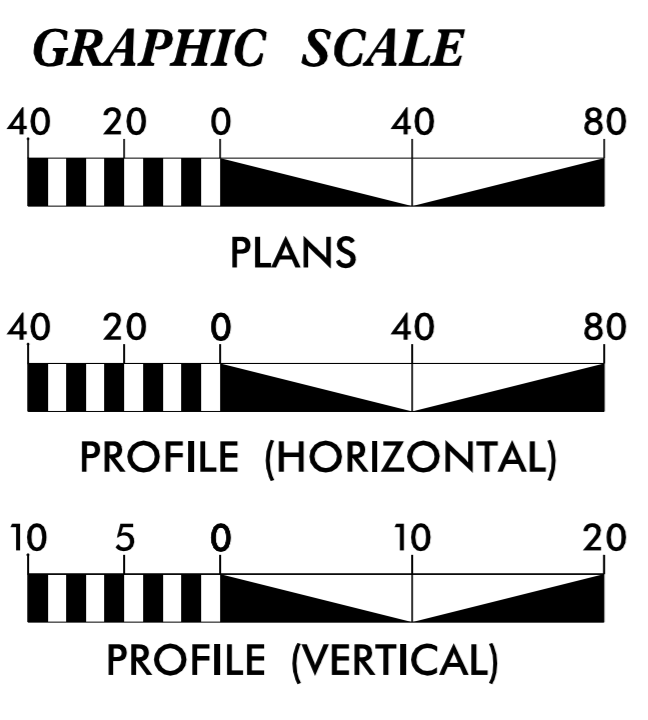


STATE	STATE PROJECT REFERENCE NO.	SHEET NO.	TOTAL SHEETS
N.C.	U-3315	EC-1	
STATE PROJ. NO.	F.A. PROJ. NO.	DESCRIPTION	
35781.1.2	HPPSTP-0220(53)	P.E.	
35781.2.1	HPPSTP-0220(53)	RIGHT-OF-WAY	
35781.2.1	HPPSTP-0220(53)	UTILITIES	
35781.3.FDI	STP-0220(72)	CONSTRUCTION	

EROSION AND SEDIMENT CONTROL MEASURES

Std. #	Description	Symbol
1630.05	Temporary Silt Ditch	TD
1630.05	Temporary Diversion	TD
1605.01	Temporary Silt Fence	III III III
1606.01	Special Sediment Control Fence	▲▲▲▲▲
1622.01	Temporary Berms and Slope Drains	—
1630.02	Silt Basin Type B	▨
1633.01	Temporary Rock Silt Check Type-A	▨
	Temporary Rock Silt Check Type-A with Matting and Polyacrylamide (PAM)	▨
1633.02	Temporary Rock Silt Check Type-B	▨
	Wattle/Coir Fiber Wattle	—
	Wattle/Coir Fiber Wattle with Polyacrylamide (PAM)	—
1634.01	Temporary Rock Sediment Dam Type-A	▨
1634.02	Temporary Rock Sediment Dam Type-B	▨
1635.01	Rock Pipe Inlet Sediment Trap Type-A	⊓
1635.02	Rock Pipe Inlet Sediment Trap Type-B	⊓
1630.04	Stilling Basin	▭
1630.06	Special Stilling Basin	▭
	Rock Inlet Sediment Trap:	
1632.01	Type A	A
1632.02	Type B	B
1632.03	Type C	C
	Skimmer Basin	▭
	Tiered Skimmer Basin	▭
	Infiltration Basin	▭

THIS PROJECT HAS
 BEEN DESIGNED TO
 SENSITIVE WATERSHED
 STANDARDS.



ROADSIDE ENVIRONMENTAL UNIT
 DIVISION OF HIGHWAYS
 STATE OF NORTH CAROLINA

THESE EROSION AND SEDIMENT CONTROL PLANS COMPLY
 WITH THE REGULATIONS SET FORTH BY THE
 NCG-010000 GENERAL CONSTRUCTION PERMIT EFFECTIVE AUGUST 3, 2011
 ISSUED BY THE NORTH CAROLINA DEPARTMENT OF ENVIRONMENT AND
 NATURAL RESOURCES DIVISION OF WATER QUALITY.

PLANS PREPARED FOR THE NCDOT BY:
Kimley»Horn
 2012 STANDARD SPECIFICATIONS

Roadway Standard Drawings

The following roadway english standards as appear in "Roadway Standard Drawings"- Roadway Design Unit - N. C. Department of Transportation - Raleigh, N. C., dated January 2012 and the latest revision thereto are applicable to this project and by reference hereby are considered a part of these plans.

1604.01 Railroad Erosion Control Detail	1632.01 Rock Inlet Sediment Trap Type A
1605.01 Temporary Silt Fence	1632.02 Rock Inlet Sediment Trap Type B
1606.01 Special Sediment Control Fence	1632.03 Rock Inlet Sediment Trap Type C
1607.01 Gravel Construction Entrance	1633.01 Temporary Rock Silt Check Type A
1622.01 Temporary Berms and Slope Drains	1633.02 Temporary Rock Silt Check Type B
1630.01 Riser Basin	1634.01 Temporary Rock Sediment Dam Type A
1630.02 Silt Basin Type B	1634.02 Temporary Rock Sediment Dam Type B
1630.03 Temporary Silt Ditch	1635.01 Rock Pipe Inlet Sediment Trap Type A
1630.04 Stilling Basin	1635.02 Rock Pipe Inlet Sediment Trap Type B
1630.05 Temporary Diversion	1640.01 Coir Fiber Baffle
1630.06 Special Stilling Basin	1645.01 Temporary Stream Crossing
1631.01 Matting Installation	

BORROW PIT DEWATERING BASIN DETAIL

PROJECT REFERENCE NO. U-3315	SHEET NO. EC-2
R/W SHEET NO.	
ROADWAY DESIGN ENGINEER	HYDRAULICS ENGINEER

GENERAL NOTES:

DETERMINE BORROW PIT DEWATERING BASIN SIZE USING $V = 8.0203 * Q * T$, WHERE V IS VOLUME (FT³), Q IS PUMP FLOW RATE (GPM), AND T IS DEWATERING TIME (HR). USE MAXIMUM FLOW RATE OF 1000 GPM AND A MINIMUM DEWATERING TIME OF 2 HOURS.

RISER SHALL BE A NON-PERFORATED, SMOOTH OR CORRUGATED MATERIAL WITH A FLASHBOARD OPTION.

CONSTRUCT THE COIR FIBER BAFFLE IN ACCORDANCE WITH ROADWAY STANDARD DRAWING 1640.01 AND WITH MATERIAL THAT MEETS THE SPECIFICATIONS OF ROADWAY STANDARD 1640-14.

PROVIDE 5' STEEL POSTS OF THE SELF-FASTENER ANGLE STEEL TYPE. INSTALL STEEL POSTS WITH NO MORE THAN 3' OF THE POST APPEARING ABOVE THE GROUND.

ATTACH THE COIR FIBER MAT TO THE STEEL POSTS WITH WIRE OR OTHER ACCEPTABLE MEANS AND STAPLED INTO THE BOTTOM AND SIDE SLOPES OF THE BASIN WITH 12" STAPLES.

INSTALL TYPE 2 GEOTEXTILE ON SIDESLOPES AND BOTTOM OF BASIN AT INLET AS SHOWN IN THE DETAIL.

USE THE TYPICAL SECTION SHOWN FOR THE BORROW PIT DEWATERING BASIN AS A GUIDE. THE BASIN MAY HAVE ANY TYPE CONFIGURATION AS LONG AS SUFFICIENT VOLUME IS PROVIDED AND PROVISIONS ARE MADE FOR A NON-PERFORATED RISER.

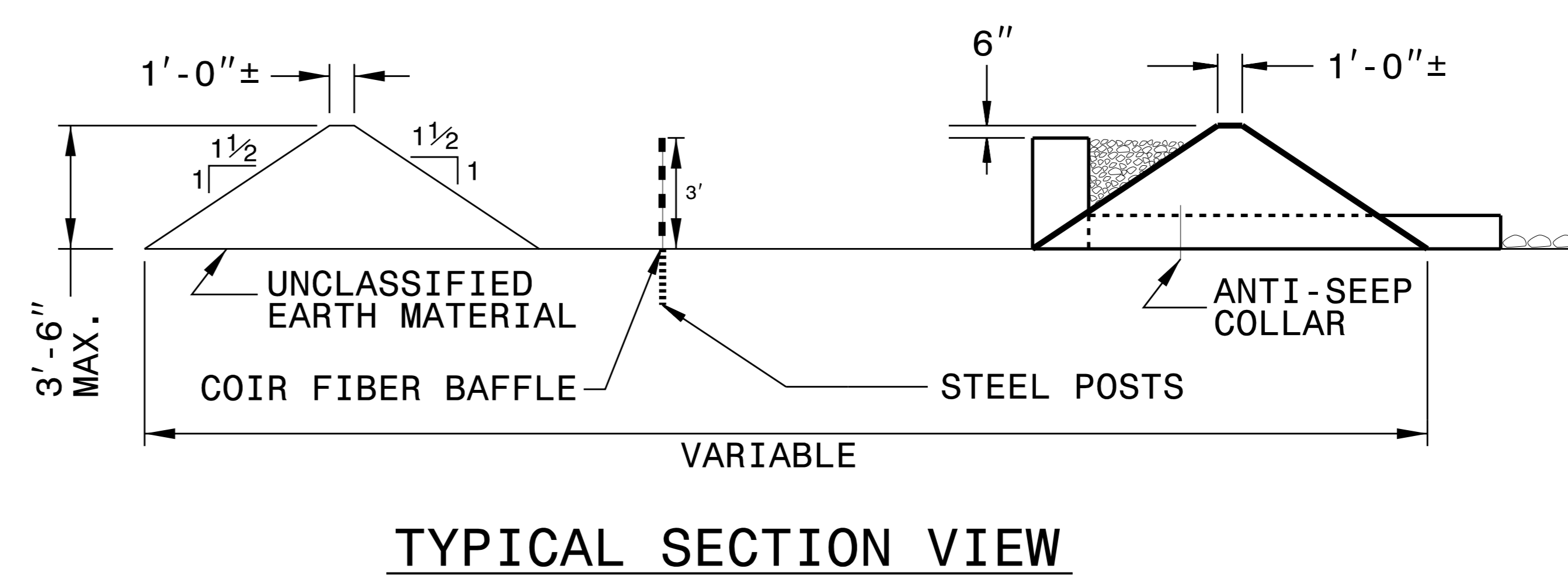
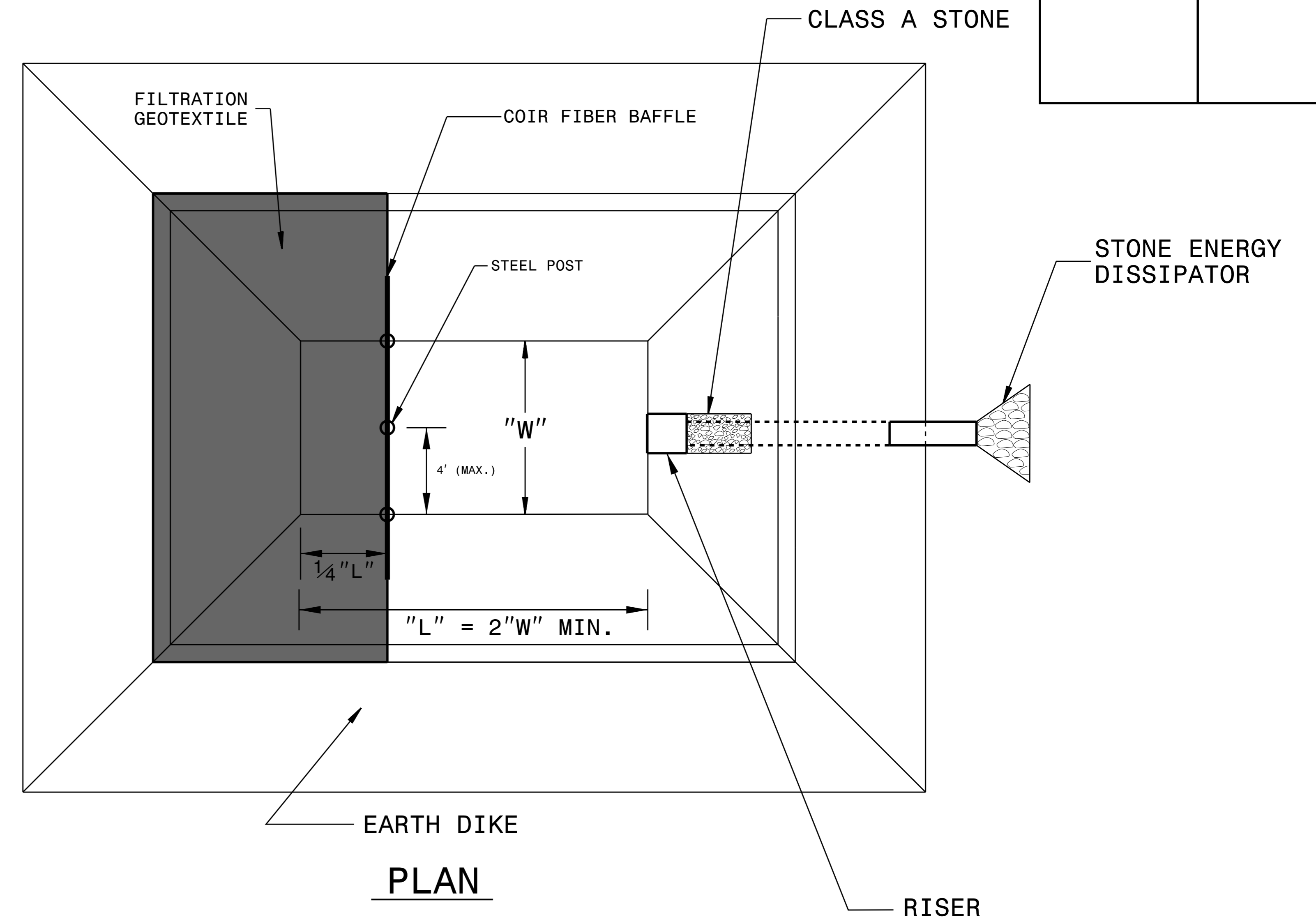
DO NOT EXCEED 3½ FT. IN HEIGHT FOR THE EARTH DIKES REQUIRED FOR BORROW PIT DEWATERING BASIN.

THE BORROW PIT DEWATERING BASIN SIZE IS VARIABLE AND DEPENDENT ON SPECIFIC SITE REQUIREMENTS AS WELL AS PROPOSED CONSTRUCTION OPERATIONS.

SUBMIT THE SIZE, LOCATION AND RISER PIPE MATERIAL FOR APPROVAL PRIOR TO CONSTRUCTION.

PUMP THE EFFLUENT INTO THE BORROW PIT DEWATERING BASIN TO A MAXIMUM DEPTH OF 6 IN. BELOW TOP OF EARTH DIKE.

PROVIDE A STONE ENERGY DISSIPATOR PAD AT THE OUTLET OF THE PUMP DISCHARGE HOSE AND OUTLET OF THE RISER BARREL IN ACCORDANCE WITH ROADWAY STANDARD DRAWING 876.02 FOR OUTLET W/O DITCH.



NOT TO SCALE

DIVISION OF HIGHWAYS
STATE OF NORTH CAROLINA

PROJECT REFERENCE NO.	SHEET NO.
<i>U-3315</i>	<i>EC-3</i>
ROADWAY DESIGN ENGINEER	HYDRAULICS ENGINEER

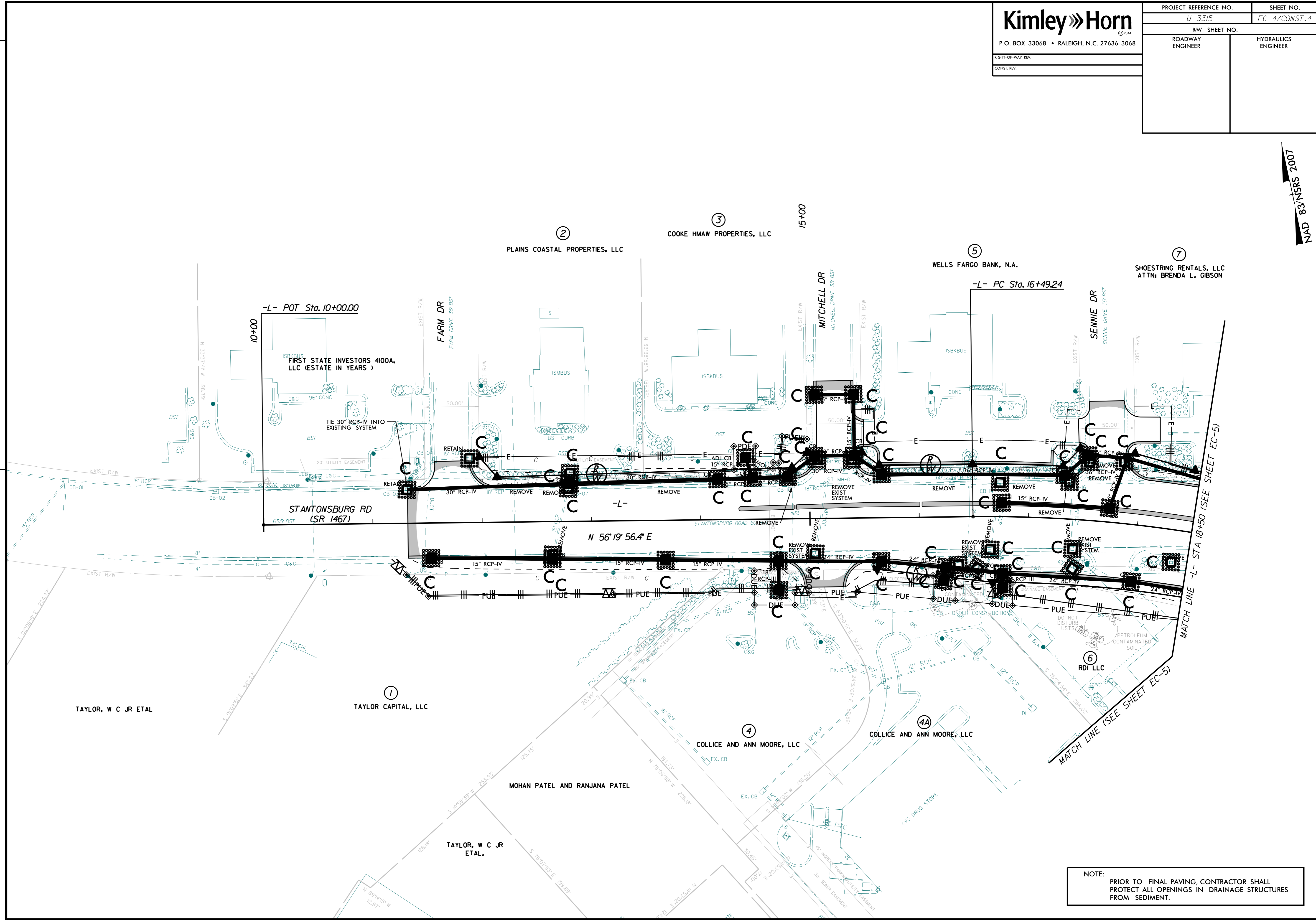
SOIL STABILIZATION TIMEFRAMES

<i>SITE DESCRIPTION</i>	<i>STABILIZATION TIME</i>	<i>TIMEFRAME EXCEPTIONS</i>
PERIMETER DIKES, SWALES, DITCHES AND SLOPES	7 DAYS	NONE
HIGH QUALITY WATER (HQW) ZONES	7 DAYS	NONE
SLOPES STEEPER THAN 3:1	7 DAYS	IF SLOPES ARE 10' OR LESS IN LENGTH AND ARE NOT STEEPER THAN 2:1, 14 DAYS ARE ALLOWED.
SLOPES 3:1 OR FLATTER	14 DAYS	7 DAYS FOR SLOPES GREATER THAN 50' IN LENGTH.
ALL OTHER AREAS WITH SLOPES FLATTER THAN 4:1	14 DAYS	NONE, EXCEPT FOR PERIMETERS AND HQW ZONES.

PROJECT REFERENCE NO. U-3315	SHEET NO. EC-4/CONST. 4
R/W SHEET NO.	HYDRAULICS ENGINEER
ROADWAY ENGINEER	

REVISIONS

NAD 83/NSRS 2007

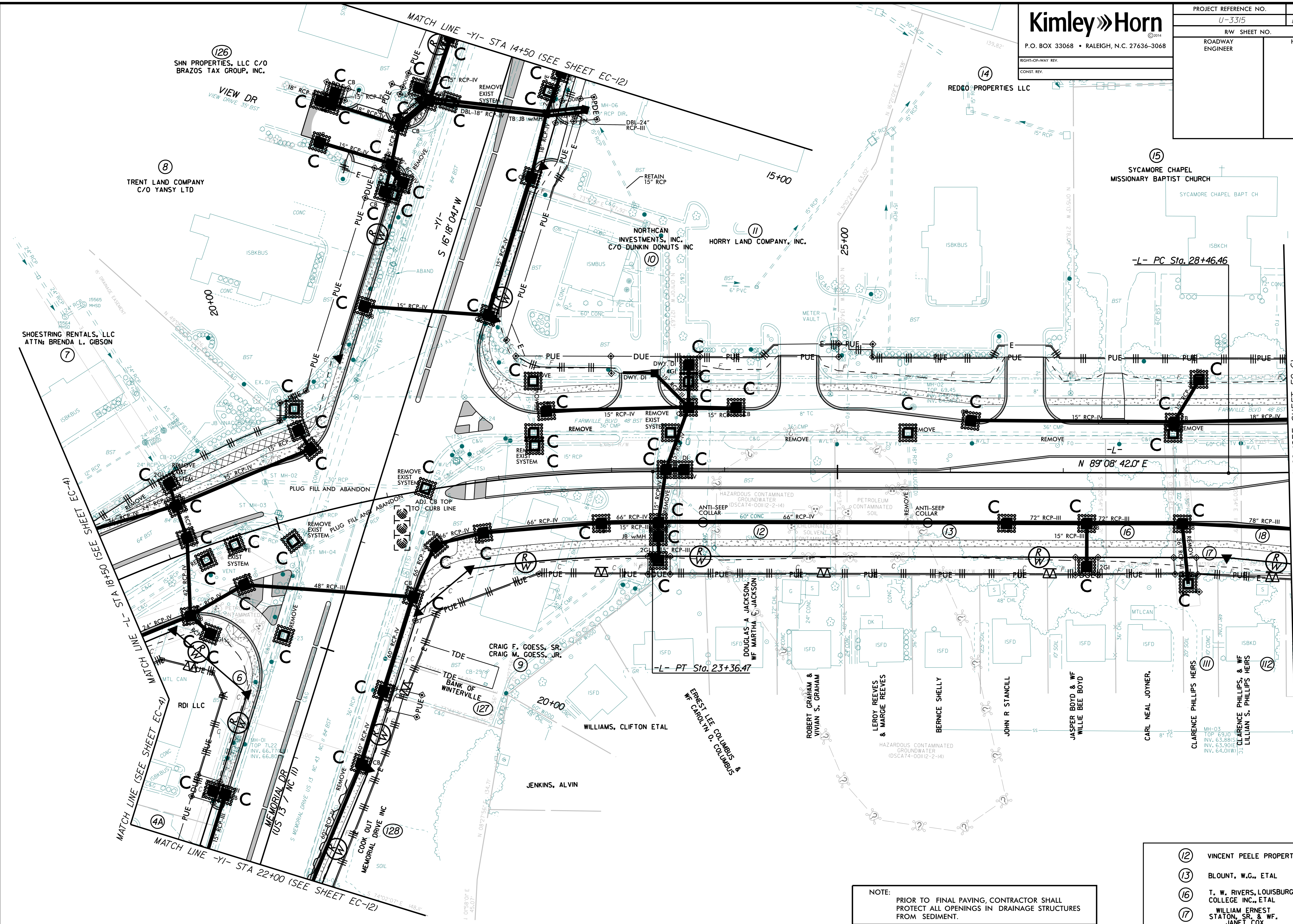


NOTE:
PRIOR TO FINAL PAVING, CONTRACTOR SHALL
PROTECT ALL OPENINGS IN DRAINAGE STRUCTURES
FROM SEDIMENT.

PROJECT REFERENCE NO. U-3315	SHEET NO. EC-5/CONST. 5
R/W SHEET NO.	HYDRAULICS ENGINEER
ROADWAY ENGINEER	

NAD 83/NSRS 2007

REVISIONS



NOTE:
PRIOR TO FINAL PAVING, CONTRACTOR SHALL PROTECT ALL OPENINGS IN DRAINAGE STRUCTURES FROM SEDIMENT.

- (12) VINCENT PEELE PROPERTIES, LLC
- (13) BLOUNT, W.G., ETAL
- (16) T. W. RIVERS, LOUISBURG COLLEGE INC., ETAL
- (17) WILLIAM ERNEST STATON, SR. & WF. JANET COX
- (18) PHILLIP RAY COX

Kimley»Horn

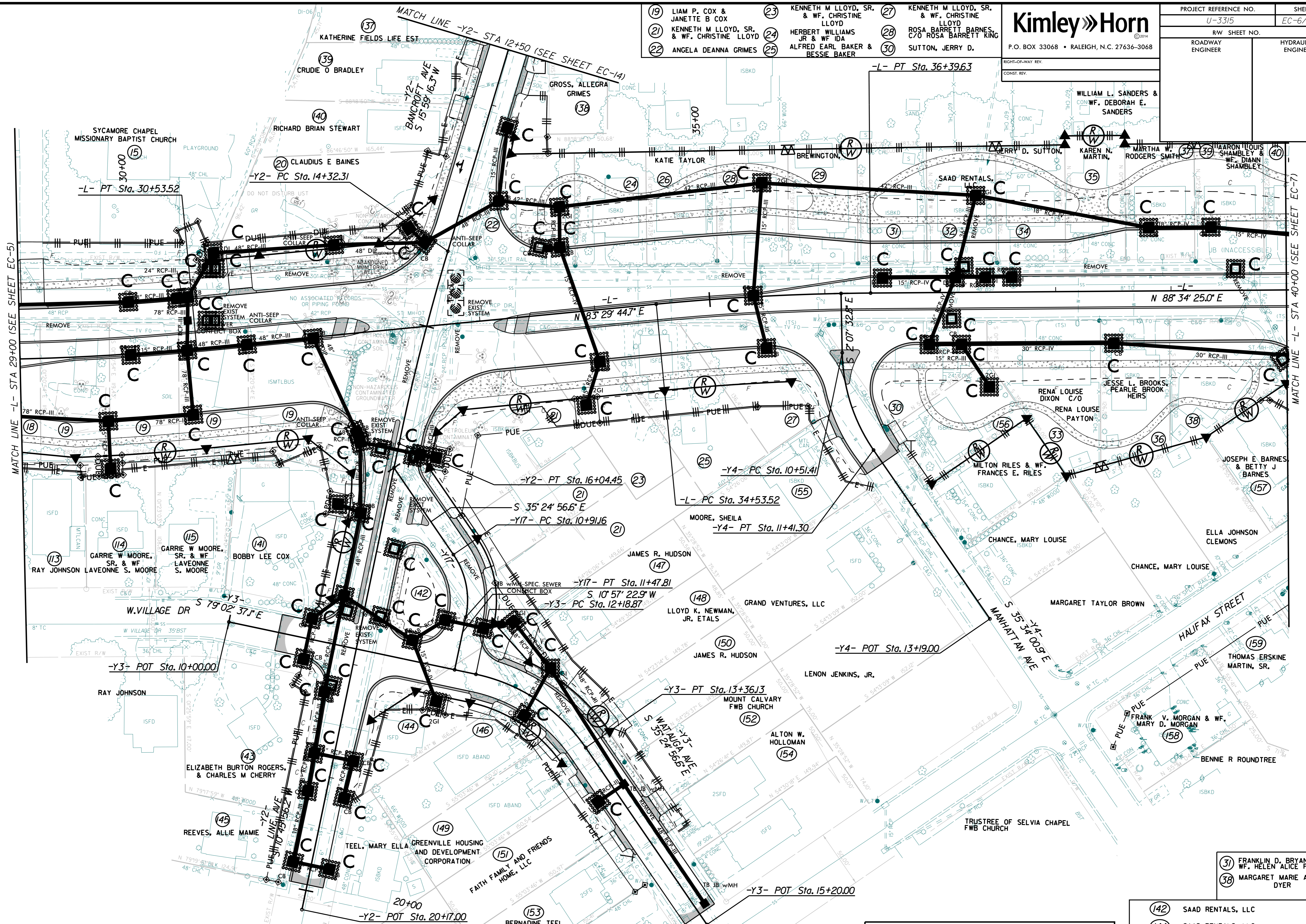
P.O. BOX 33068 • RALEIGH, N.C. 27636-3068

PROJECT REFERENCE NO.	SHEET NO.
U-3315	EC-6/CONST.6
RW SHEET NO.	HYDRAULICS ENGINEER
ROADWAY ENGINEER	

- | | | |
|---|--|---|
| (19) LIAM P. COX & JANETTE B COX | (23) KENNETH M LLOYD, SR. & WF. CHRISTINE LLOYD | (27) KENNETH M LLOYD, SR. & WF. CHRISTINE LLOYD |
| (21) KENNETH M LLOYD, SR. & WF. CHRISTINE LLOYD | (24) HERBERT WILLIAMS JR & WF IDA ALFRED EARL BAKER & BESSIE BAKER | (28) ROSA BARRETT BARNES, C/O ROSA BARRETT KING |
| (22) ANGELA DEANNA GRIMES | (25) | (30) SUTTON, JERRY D. |

REVISIONS

NAD 83 NSRS 2007



NOTE:
PRIOR TO FINAL PAVING, CONTRACTOR SHALL PROTECT ALL OPENINGS IN DRAINAGE STRUCTURES FROM SEDIMENT.

- | |
|--|
| (31) FRANKLIN D. BRYAN & WF. HELEN ALICE F.R. BRYAN |
| (38) MARGARET MARIE ADAMS DYER |
| (142) SAAD RENTALS, LLC |
| (144) SAAD RENTALS, LLC |
| (146) GREENVILLE HOUSING AND DEVELOPMENT CORPORATION |
| (156) LASHELL MOORING SADLER, ADRIENNE MOORING & TERRY MOORING CONGLETON |

- 40 WILLIAM L. SANDERS & WF. DEBORAH E. SANDERS
- 41 BOYD, BOBBY E.
- 43 CARL FODUS CHERRY, & MAMIE CHERRY
- 45 TURNAGE, LULA J.
- 51 WILLIE LEE MOORE & WF. ALICE P. MOORE
- 52 BOBBY R. BOWEN & BLANCHE H. WILSON
- 53 BOBBY R. BOWEN, SR MARSHALL L. BOWEN
- 54 BOBBY R. BOWEN & BLANCHE H. WILSON
- 171 JONATHAN SUTTON & TODD SUTTON

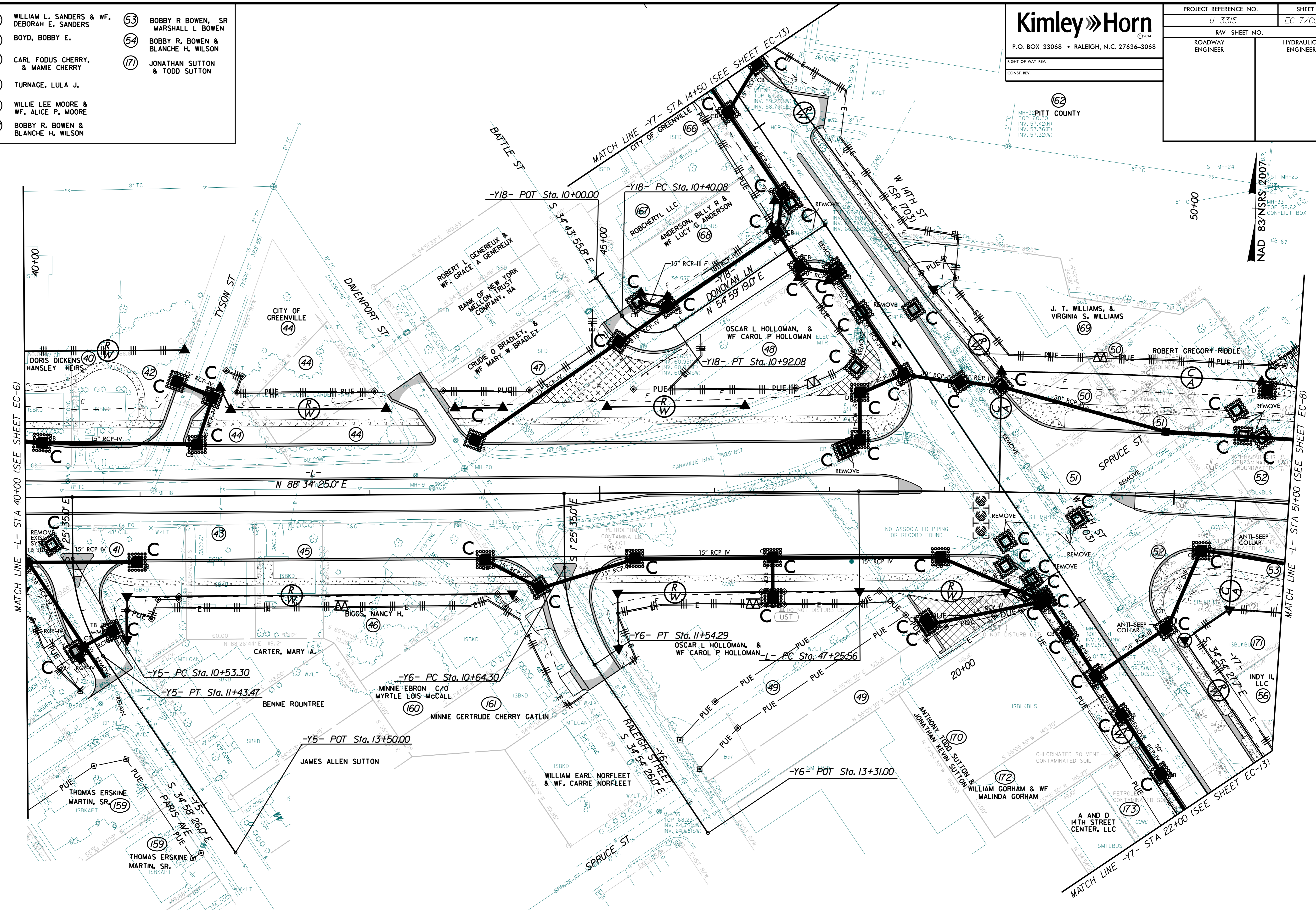
Kimley»Horn

P.O. BOX 33068 • RALEIGH, N.C. 27636-3068

RIGHT-OF-WAY REV.
CONST. REV.

PROJECT REFERENCE NO. U-3315	SHEET NO. EC-7/CONST. 7
R/W SHEET NO.	HYDRAULICS ENGINEER
ROADWAY ENGINEER	ENGINEER

REVISIONS

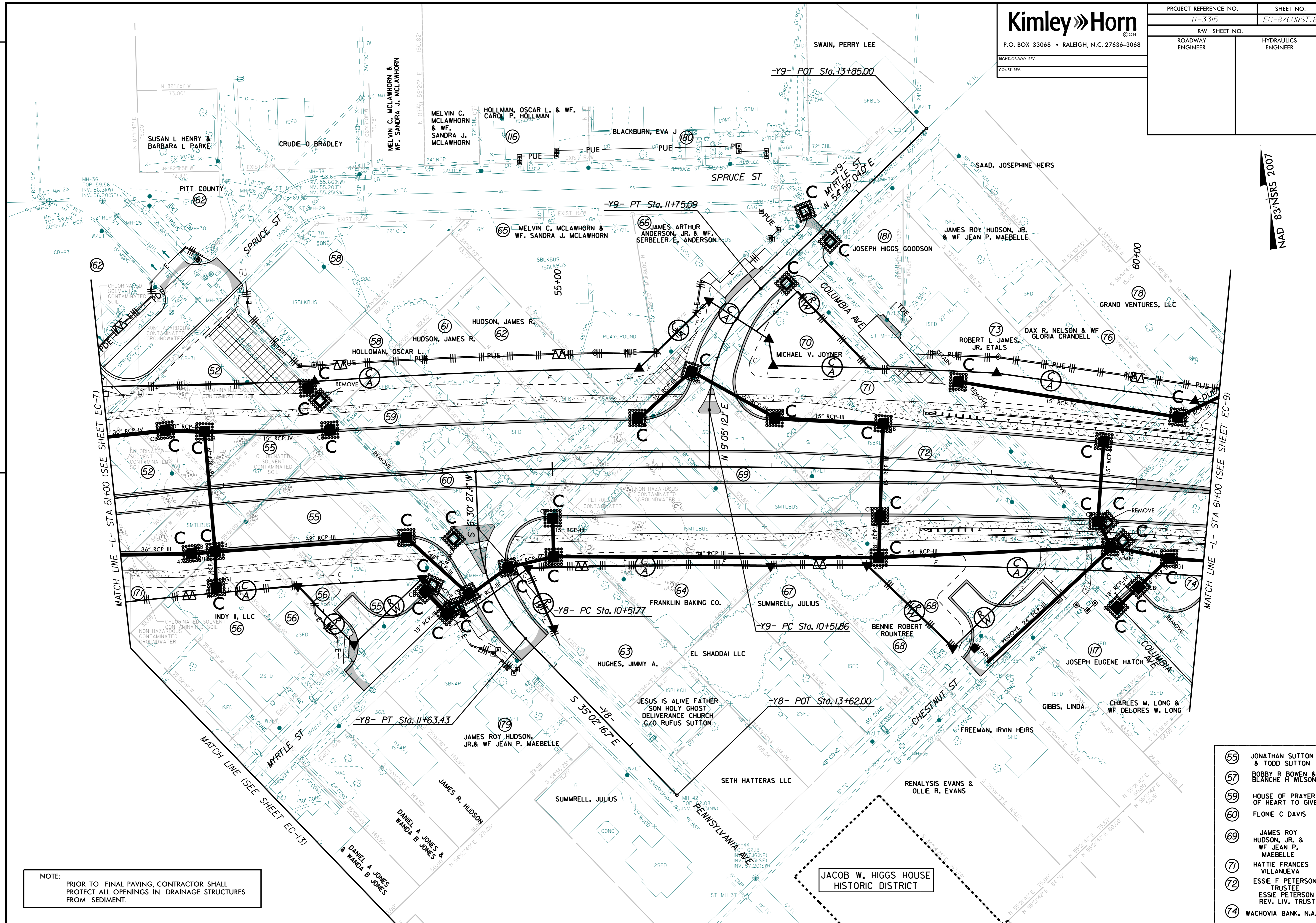


NOTE:
PRIOR TO FINAL PAVING, CONTRACTOR SHALL PROTECT ALL OPENINGS IN DRAINAGE STRUCTURES FROM SEDIMENT.

PROJECT REFERENCE NO.	SHEET NO.
U-3315	EC-8/CONST. 8
R/W SHEET NO.	HYDRAULICS ENGINEER
ROADWAY ENGINEER	

NAD 83/NSRS 2007

REVISIONS

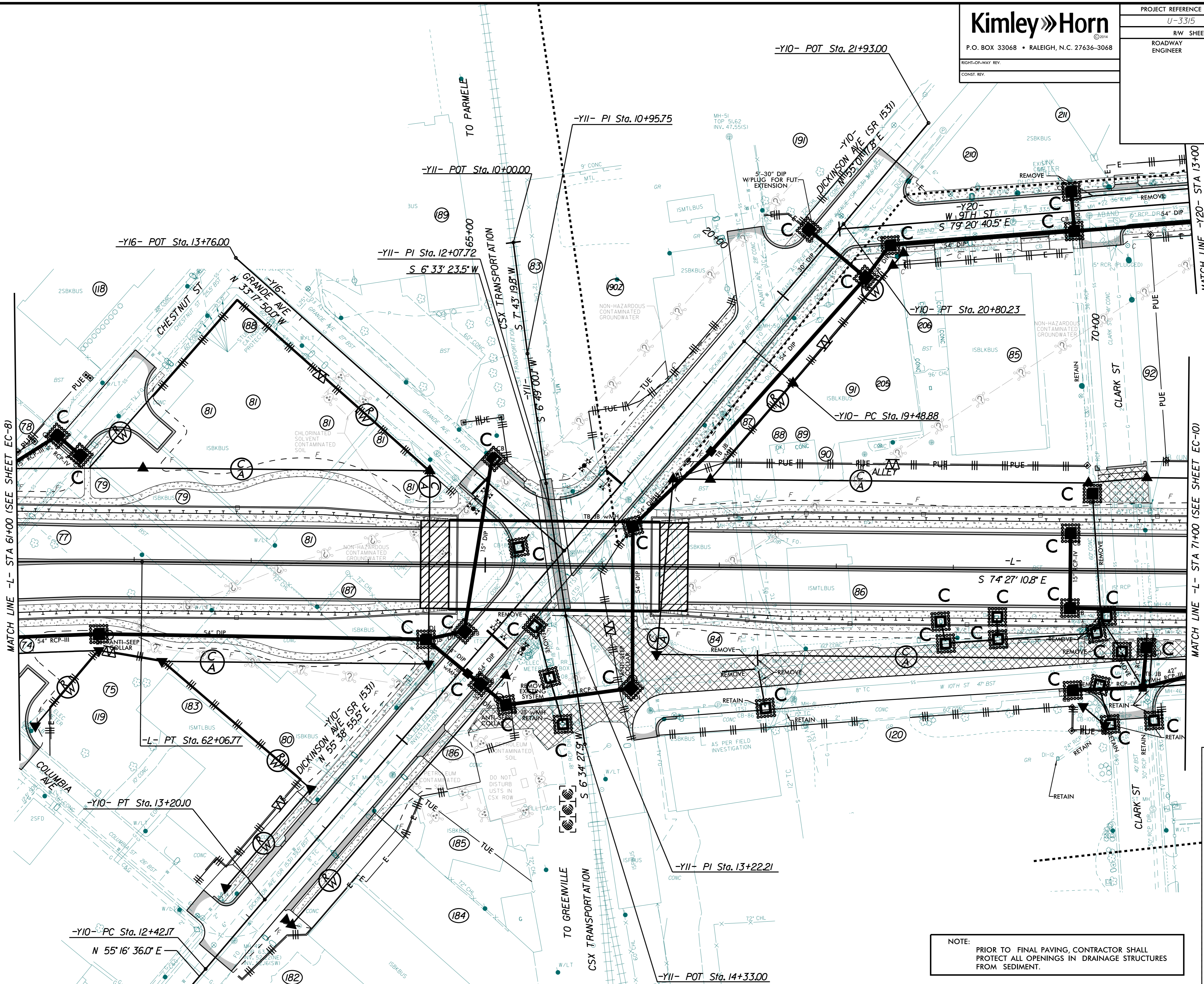


NOTE:
PRIOR TO FINAL PAVING, CONTRACTOR SHALL
PROTECT ALL OPENINGS IN DRAINAGE STRUCTURES
FROM SEDIMENT.

- 55 JONATHAN SUTTON & TODD SUTTON
- 57 BOBBY R BOWEN & BLANCHE H WILSON
- 59 HOUSE OF PRAYER-OF HEART TO GIVE
- 60 FLONIE C DAVIS
- 69 JAMES ROY HUDSON, JR. & Wf JEAN P. MAEBELLE
- 71 HATTIE FRANCES VILLANUEVA
- 72 ESSIE F PETERSON TRUSTEE
ESSIE PETERSON REV. LIV. TRUST
- 74 WACHOVIA BANK, N.A.

PROJECT REFERENCE NO. U-3315	SHEET NO. EC-9/CONST. 9
R/W SHEET NO.	HYDRAULICS ENGINEER
ROADWAY ENGINEER	

REVISIONS



SCALE 8" = 200'

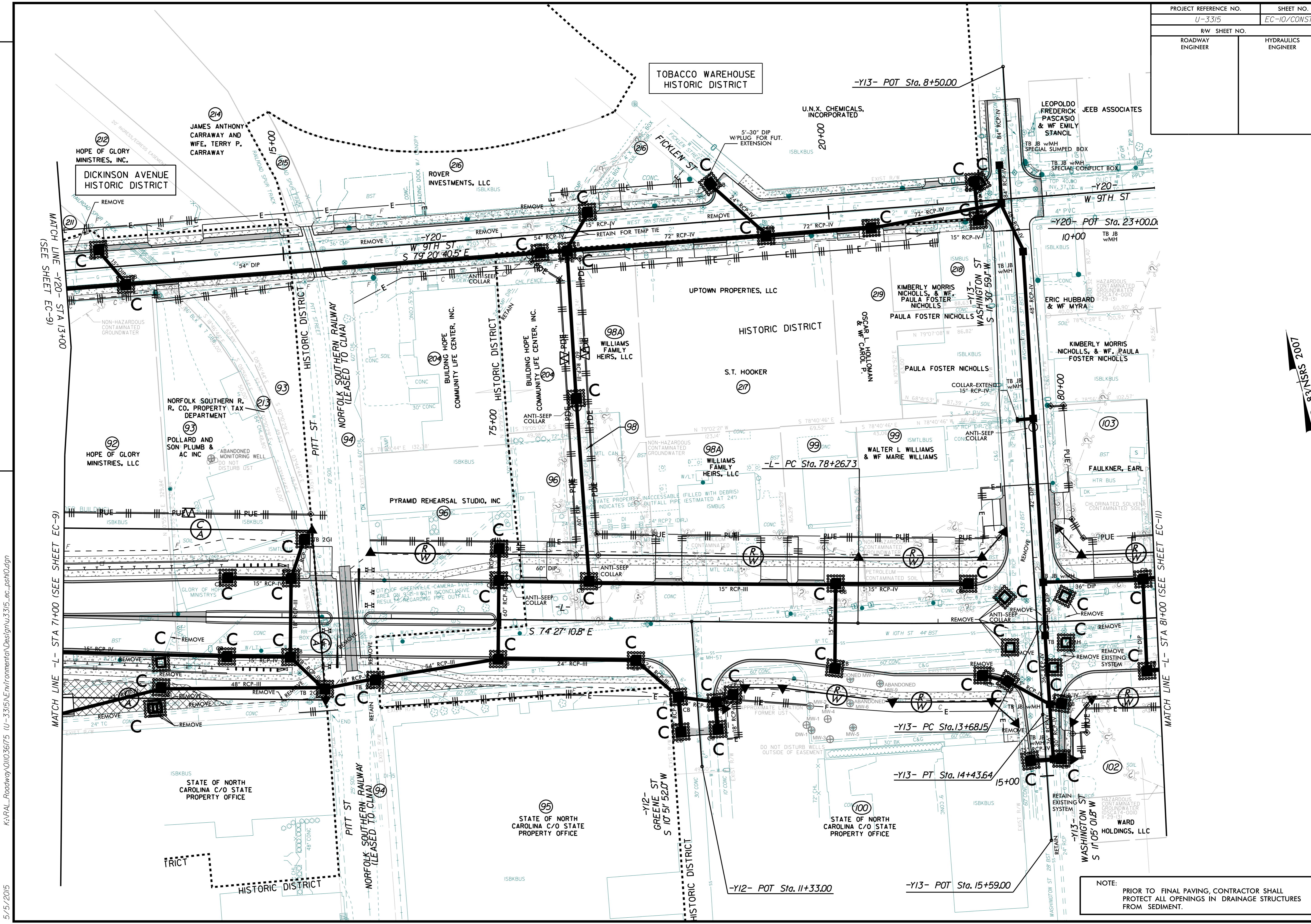
MATCH LINE -L- STA 71+00 (SEE SHEET EC-10)

- (74) WACHOVIA BANK, N.A.
- (77) SAAD, GEORGE JR.
- (78) GRAND VENTURES, LLC
- (79) PUGH'S TIRE & SERVICE CENTER, INC.
- (84) DEREK A. SANDERSON & WF. DIANNE S. SANDERSON
- (86) MOORE, WILLIAM PHILIP JR
- (88) CHARLES A LAWRENCE & MARY B ATKESON
- (89) BREAKTHROUGH REVIVAL CENTER
- (12) STATE OF NORTH CAROLINA C70 PROPERTY OFFICE
- (186) CITY OF GREENVILLE
- (187) WILTON LEE GATLIN JOSEPHINE GATLIN

NOTE:
PRIOR TO FINAL PAVING, CONTRACTOR SHALL PROTECT ALL OPENINGS IN DRAINAGE STRUCTURES FROM SEDIMENT.

PROJECT REFERENCE NO.	SHEET NO.
U-3315	EC-10/CONST.10
RW SHEET NO.	HYDRAULICS ENGINEER
ROADWAY ENGINEER	

REVISIONS



MATCH LINE -Y20- STA 13+00
(SEE SHEET EC-9)

MATCH LINE -L- STA 7+00 (SEE SHEET EC-9)

MATCH LINE -L- STA 81+00 (SEE SHEET EC-11)

NOTE:
PRIOR TO FINAL PAVING, CONTRACTOR SHALL PROTECT ALL OPENINGS IN DRAINAGE STRUCTURES FROM SEDIMENT.

K:\RAL_Roadway\01036715 U-3315\Environmental\Design\3315_ec_psh0.dgn

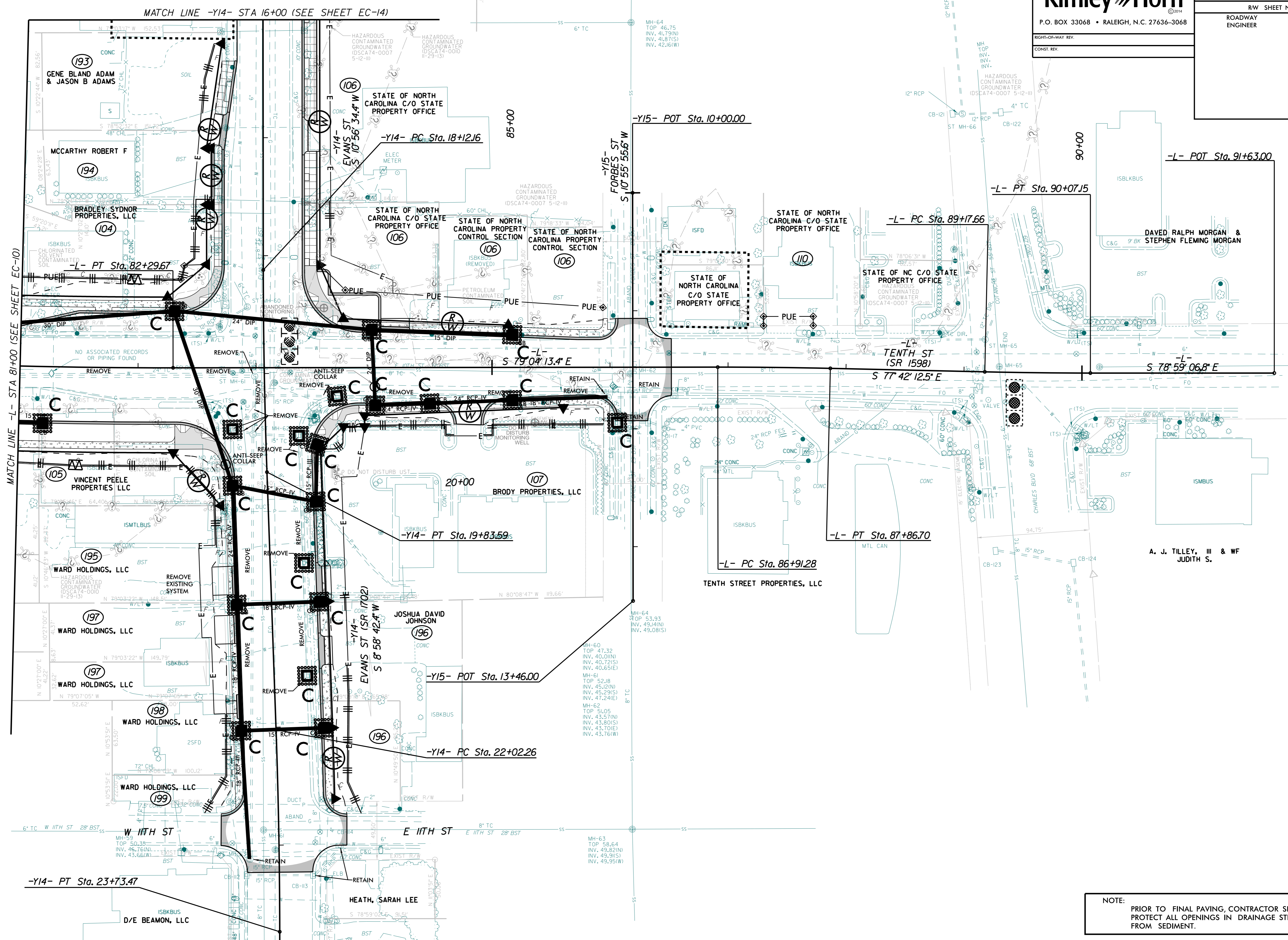
5/5/2015

2007 CSRS/8/28/AM

PROJECT REFERENCE NO.	SHEET NO.
U-3315	EC-11/CONST.11
RW SHEET NO.	
ROADWAY ENGINEER	HYDRAULICS ENGINEER

NAD 83 N/SRS 2007

REVISIONS



NOTE: PRIOR TO FINAL PAVING, CONTRACTOR SHALL PROTECT ALL OPENINGS IN DRAINAGE STRUCTURES FROM SEDIMENT.

REVISIONS

Kimley»Horn

P.O. BOX 33068 • RALEIGH, N.C. 27636-3068

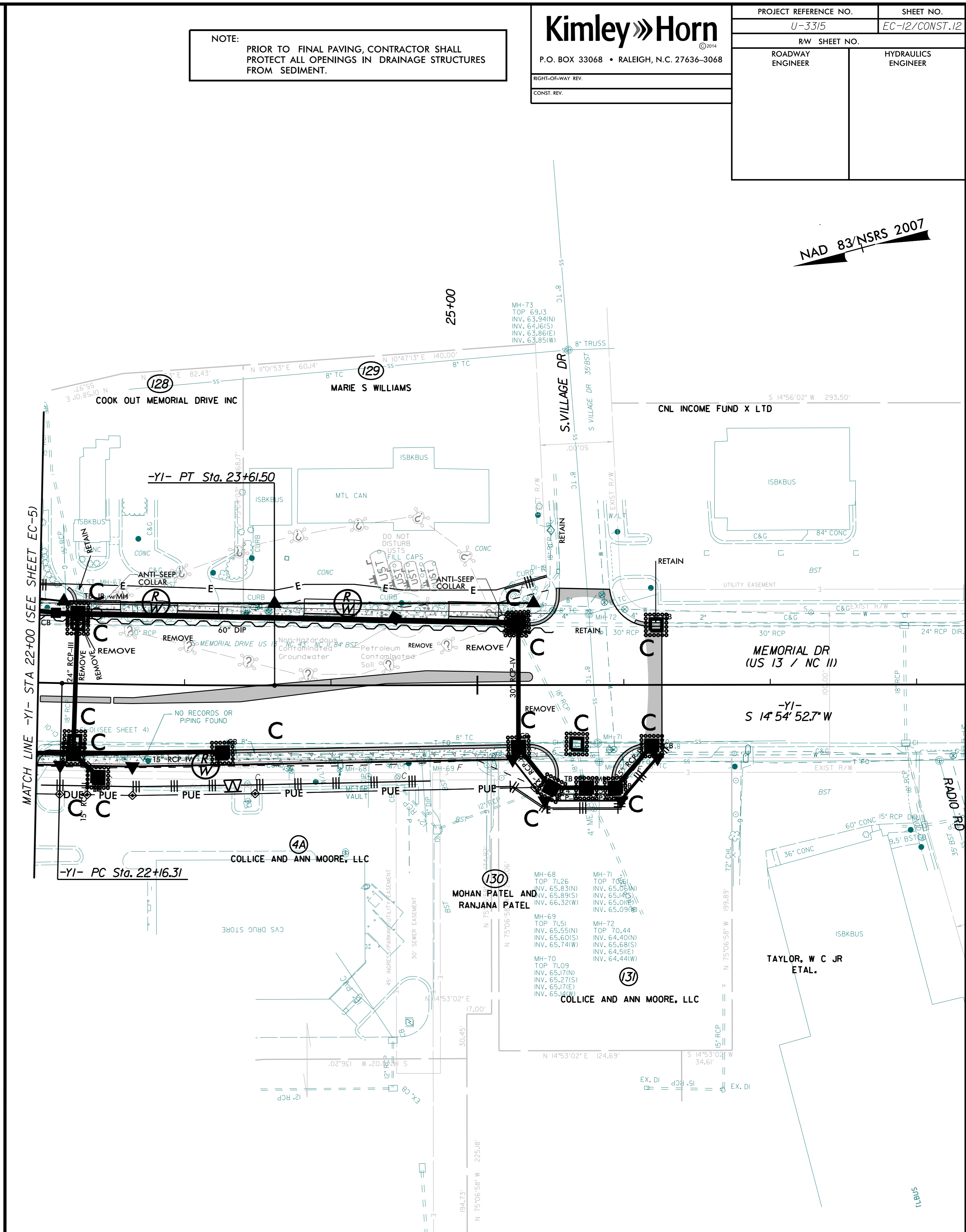
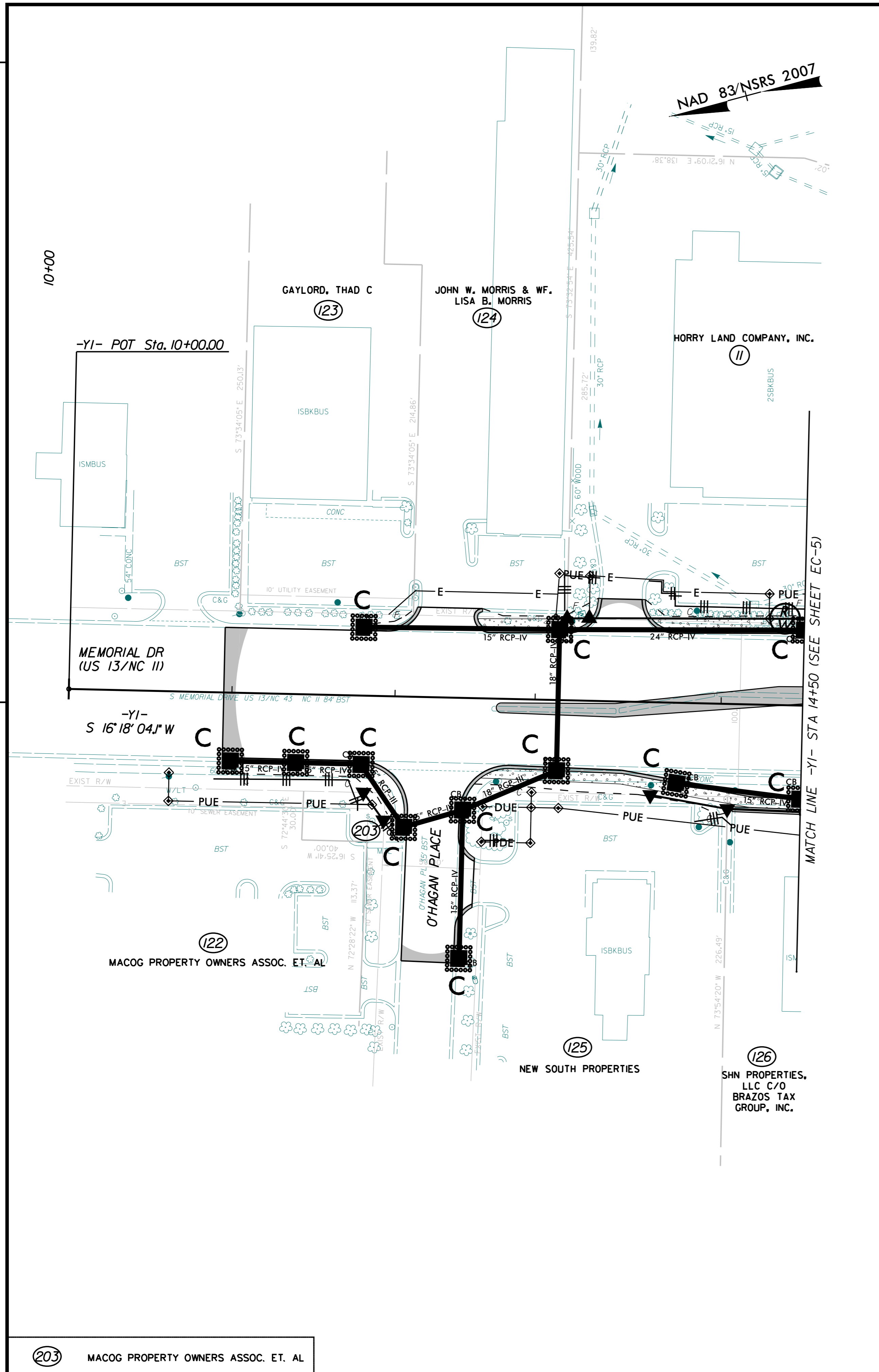
RIGHT-OF-WAY REV.

CONST. REV.

PROJECT REFERENCE NO.	SHEET NO.
U-3315	EC-12/CONST.12
R/W SHEET NO.	HYDRAULICS ENGINEER
ROADWAY ENGINEER	

NOTE:
PRIOR TO FINAL PAVING, CONTRACTOR SHALL PROTECT ALL OPENINGS IN DRAINAGE STRUCTURES FROM SEDIMENT.

NAD 83/NSRS 2007



203 MACOG PROPERTY OWNERS ASSOC. ET. AL

12/11

REVISIONS

Kimley»Horn

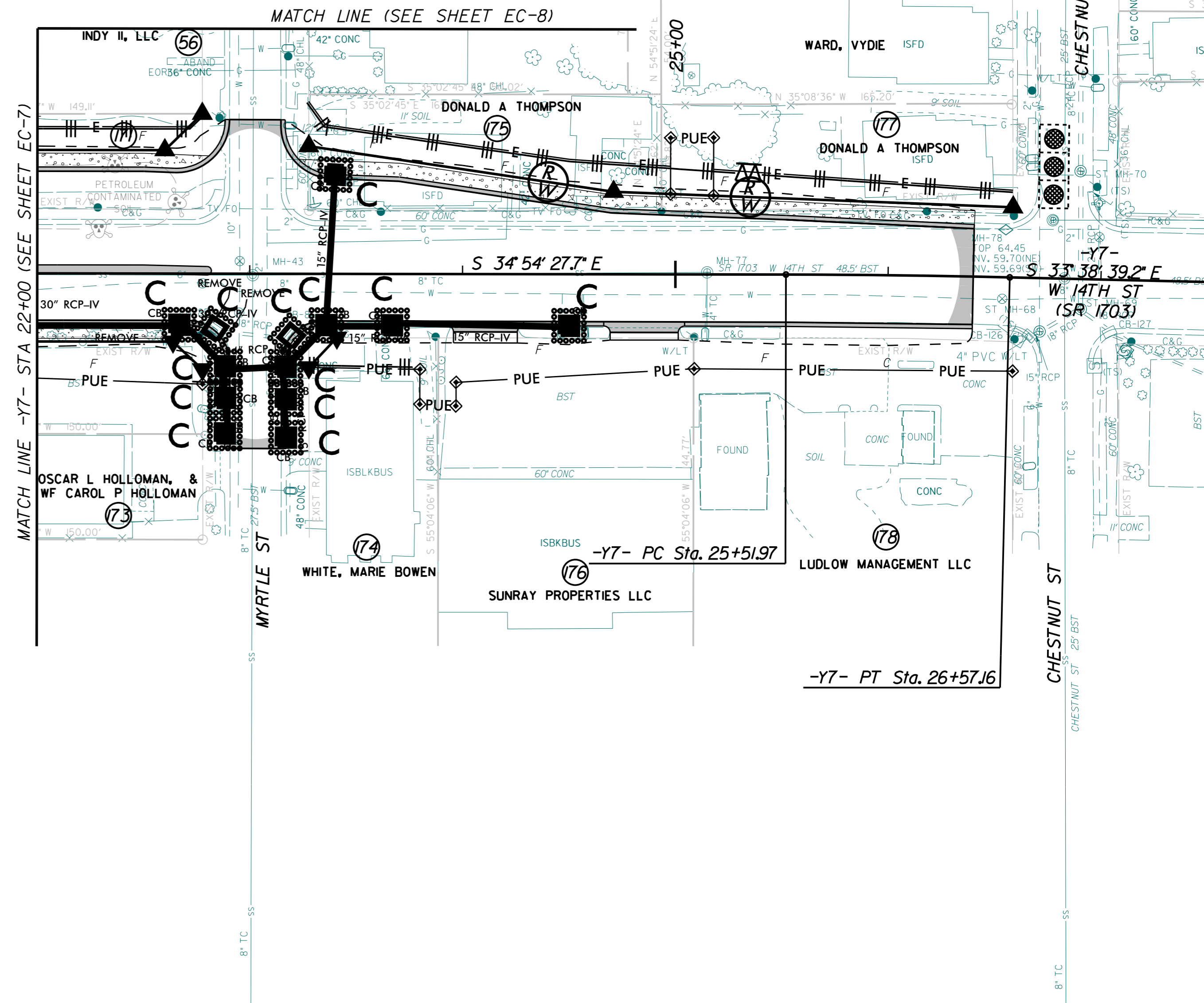
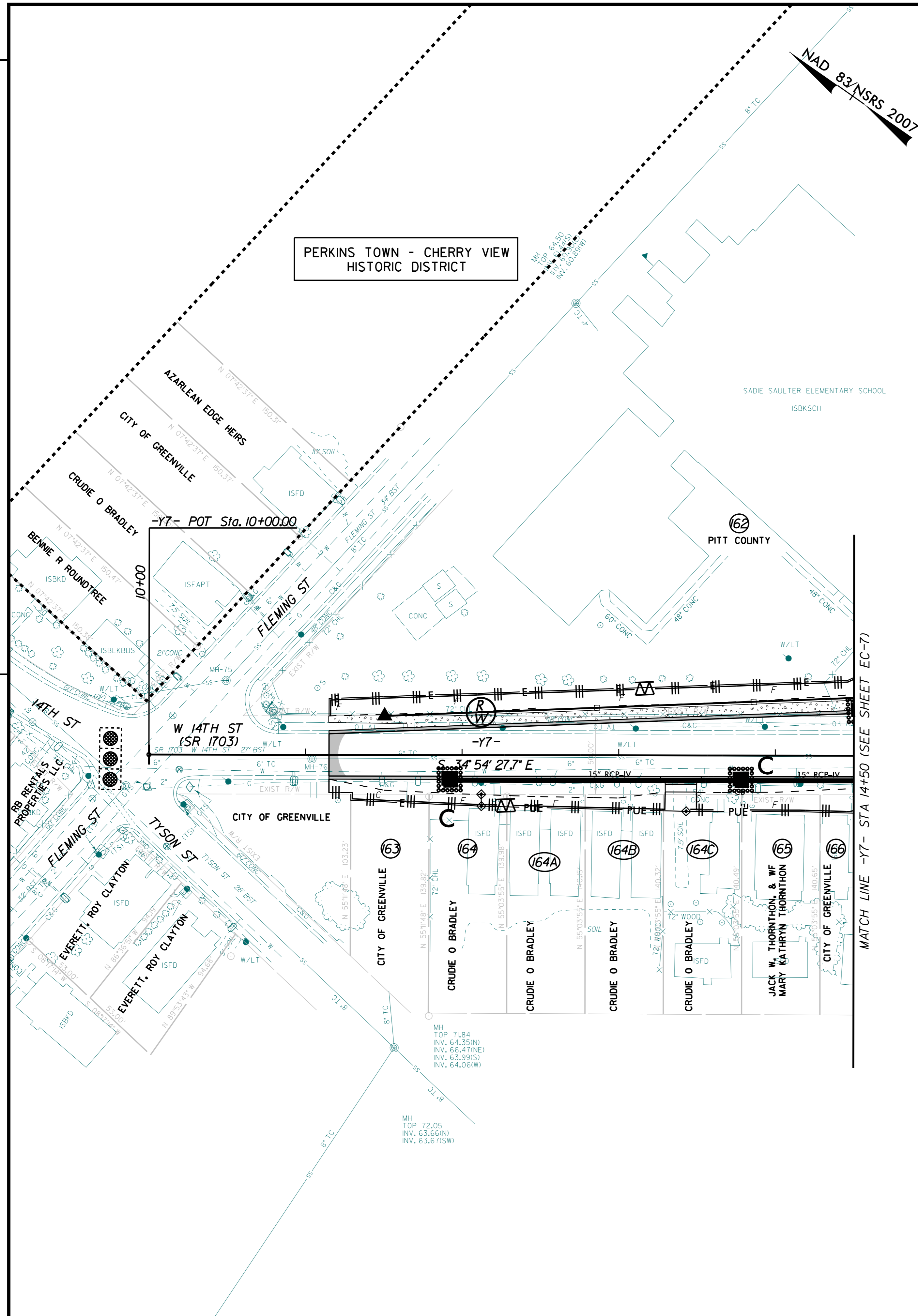
P.O. BOX 33068 • RALEIGH, N.C. 27636-3068

RIGHT-OF-WAY REV.
CONST. REV.

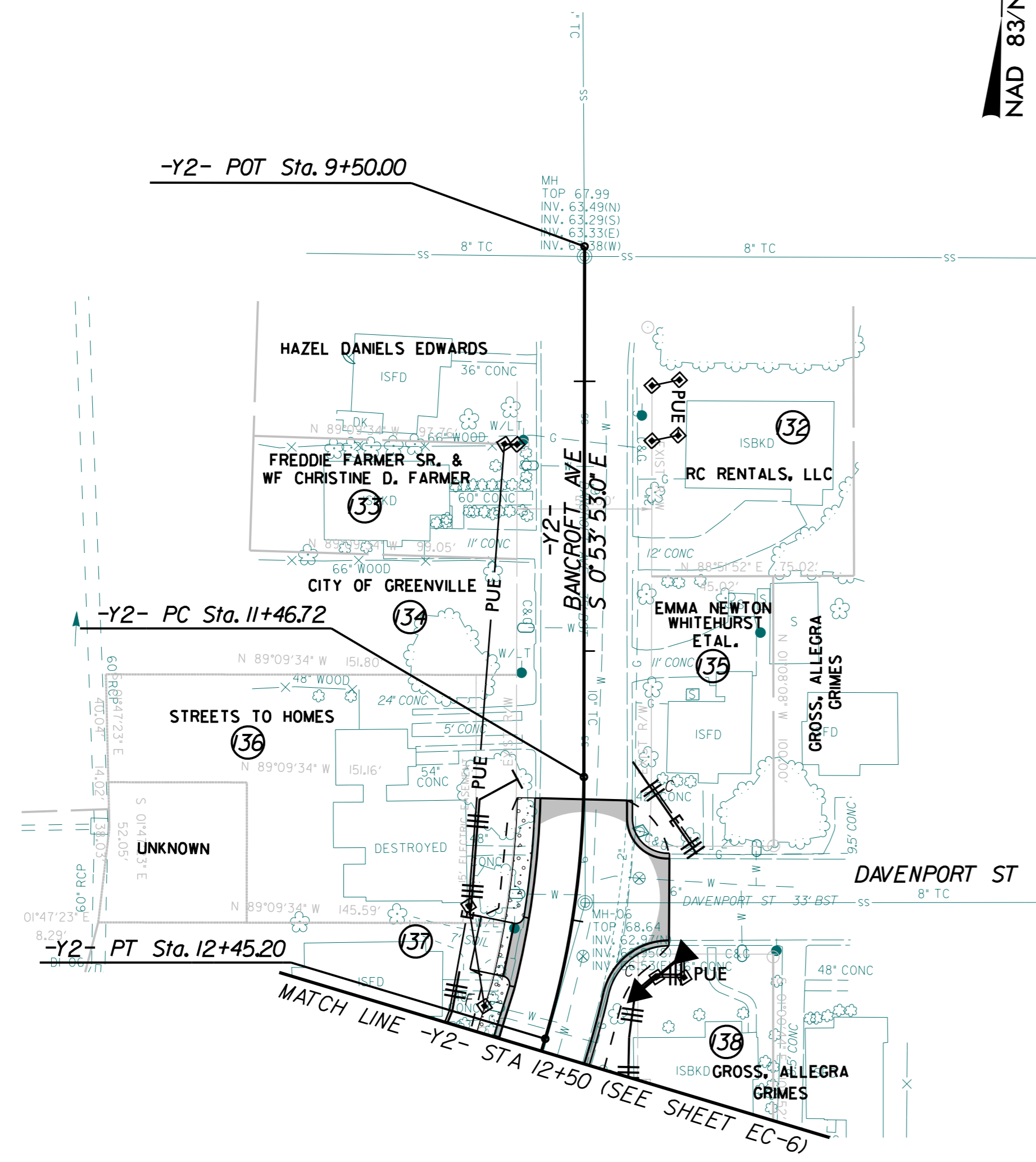
PROJECT REFERENCE NO. U-3315	SHEET NO. EC-13/CONST.13
R/W SHEET NO.	HYDRAULICS ENGINEER
ROADWAY ENGINEER	

NAD 83/NSRS 2007

PERKINS TOWN - CHERRY VIEW
HISTORIC DISTRICT



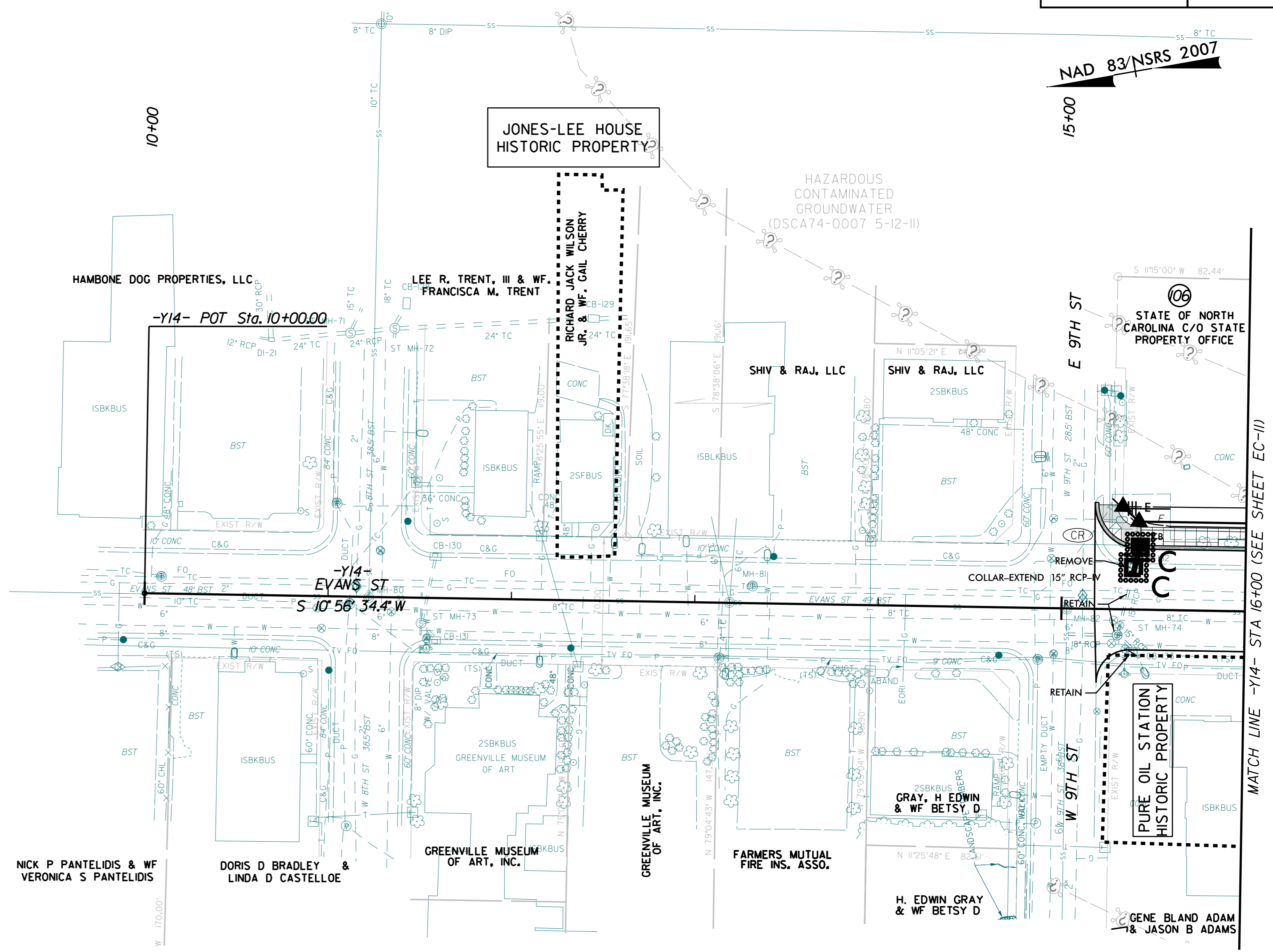
REVISIONS



NOTE:
PRIOR TO FINAL PAVING, CONTRACTOR SHALL
PROTECT ALL OPENINGS IN DRAINAGE STRUCTURES
FROM SEDIMENT.

PROJECT REFERENCE NO.		SHEET NO.	
U-3315		EC-14/CONST.14	
R/W SHEET NO.		HYDRAULICS ENGINEER	
ROADWAY ENGINEER		CONST. REV.	

Kimley»Horn
P.O. BOX 33068 • RALEIGH, N.C. 27636-3068

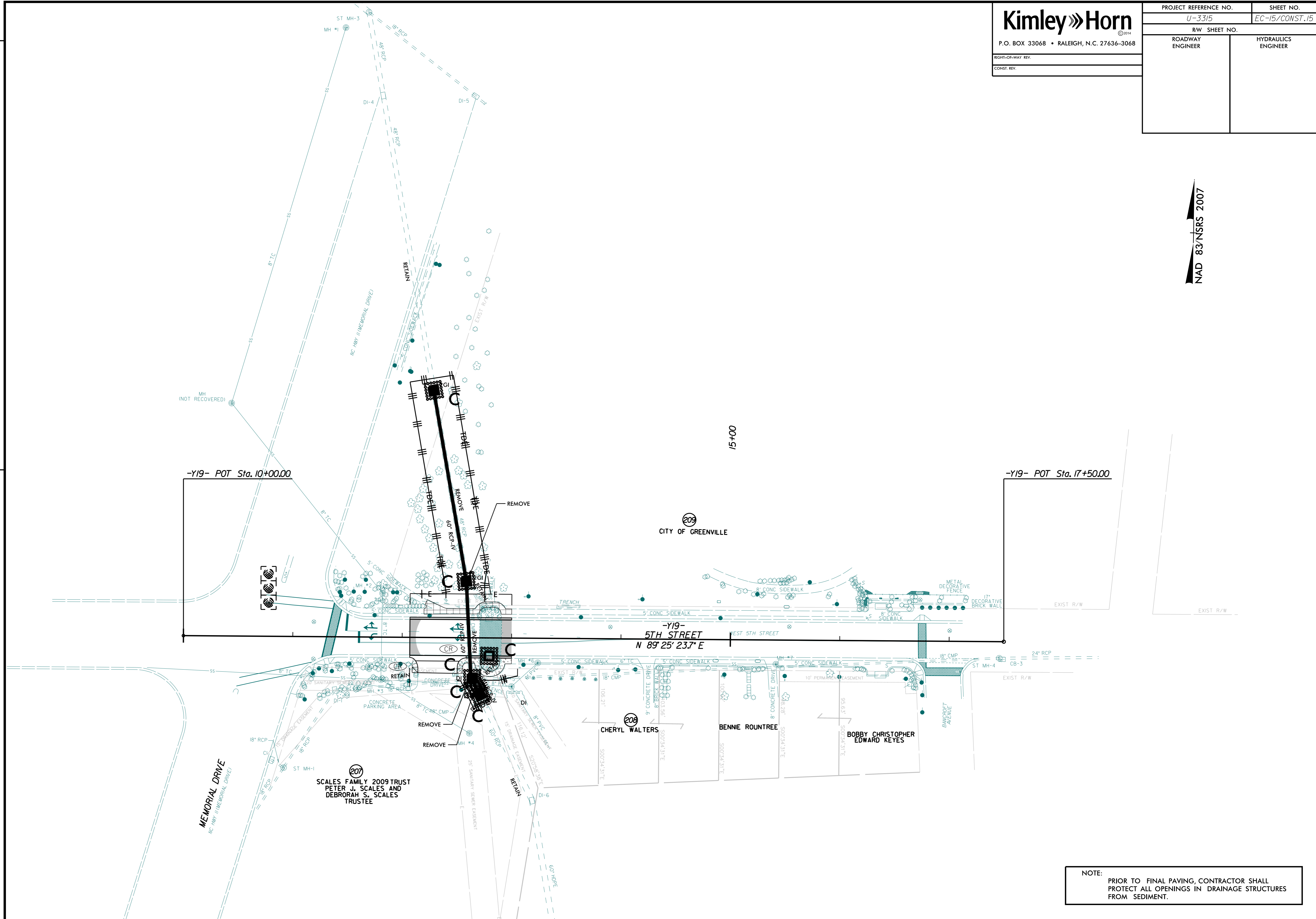


MATCH LINE -Y14- STA 16+00 (SEE SHEET EC-11)

PROJECT REFERENCE NO.	SHEET NO.
U-3315	EC-15/CONST.15
R/W SHEET NO.	HYDRAULICS ENGINEER
ROADWAY ENGINEER	HYDRAULICS ENGINEER

REVISIONS

NAD 83/NSRS 2007



NOTE: PRIOR TO FINAL PAVING, CONTRACTOR SHALL PROTECT ALL OPENINGS IN DRAINAGE STRUCTURES FROM SEDIMENT.