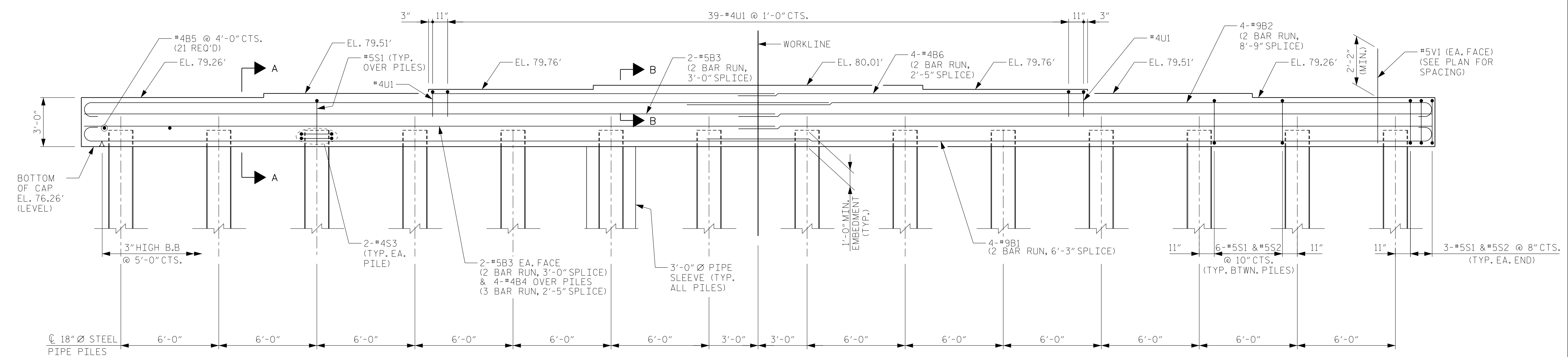


PLAN

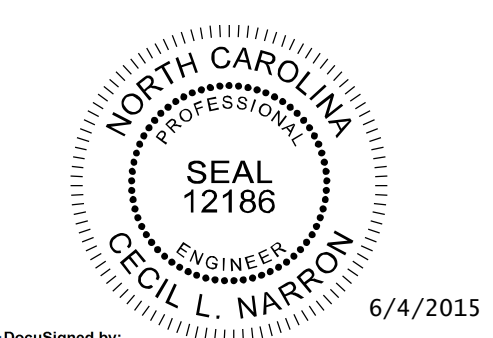


ELEVATION

NOTES

- SEE NOTES ON "END BENT 1 (INTEGRAL)" SHEET 1 OF 2.
- FOR TEMPORARY DRAINAGE DETAILS SEE "END BENT 1 (INTEGRAL)" SHEET 2 OF 3.
- FOR 18" STEEL PILE DETAILS SEE "END BENT 1 (INTEGRAL)" SHEET 3 OF 3.

PROJECT NO. U-3315
PITT COUNTY
 STATION: 65+56.61 -L-
16+96.14 -Y10-
 SHEET 1 OF 2



Kimley»Horn
 333 Fayetteville Street, Suite 600
 Raleigh, NC 27601-1772
 Phone (919) 835-1494
 NC LICENSE # F-0102

STATE OF NORTH CAROLINA DEPARTMENT OF TRANSPORTATION RALEIGH						SHEET NO. S-27
SUBSTRUCTURE END BENT 2 (INTEGRAL)						
REVISIONS						TOTAL SHEETS 33
NO.	BY:	DATE:	NO.	BY:	DATE:	
1			3			
2			4			

K:\B01_Structures\Bridges\NC\011036175_U3315-10th.St-Greenville\Cad\egm\SZ1.dgn 6/4/2015

DRAWN BY: <u>J. I. KIMBLE</u>	DATE: <u>5/15</u>
CHECKED BY: <u>J. C. WILSON</u>	DATE: <u>5/15</u>
DESIGN ENGINEER OF RECORD: <u>C.L. NARRON</u>	DATE: <u>5/15</u>