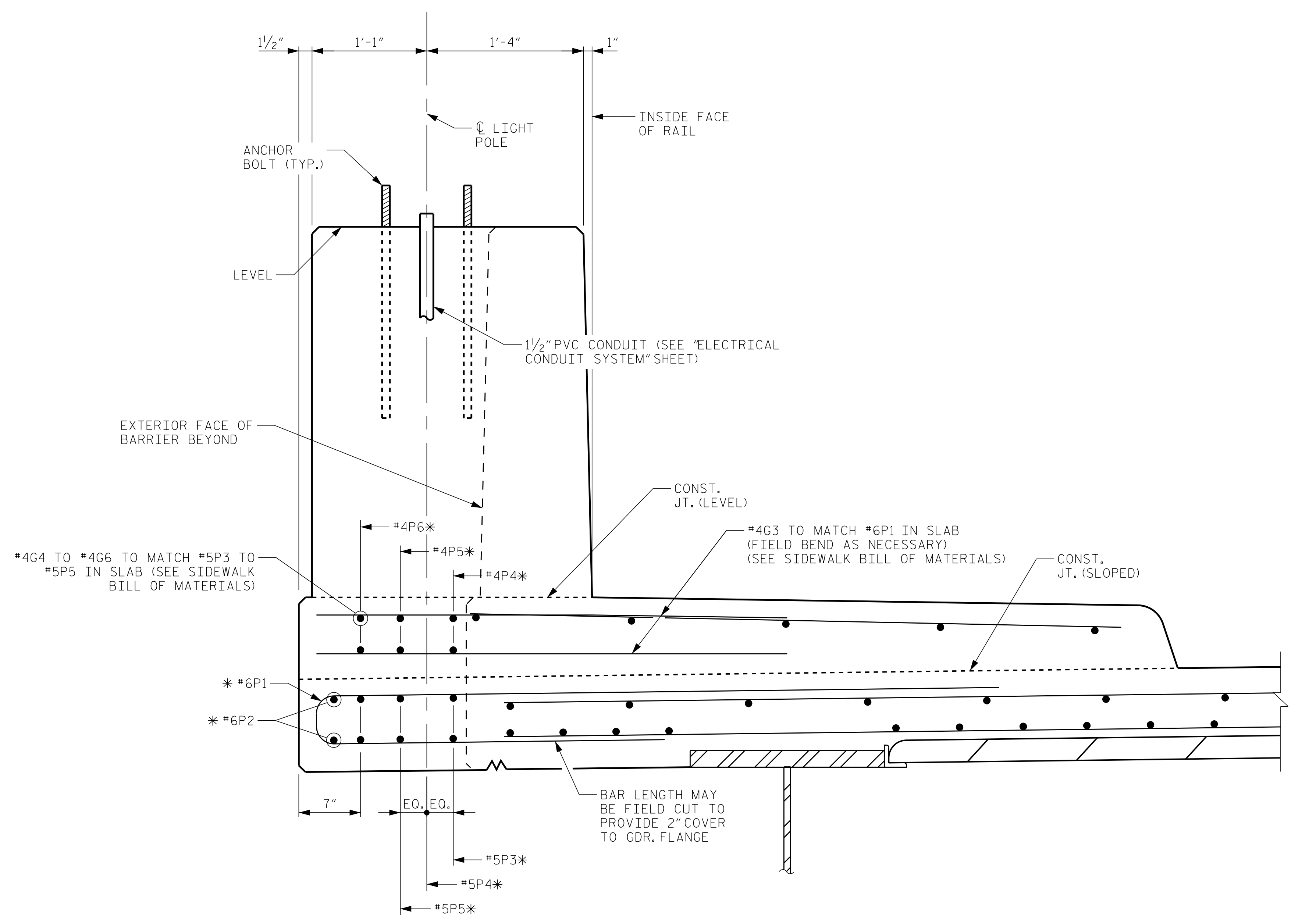


LIGHT POLE BASE PLAN

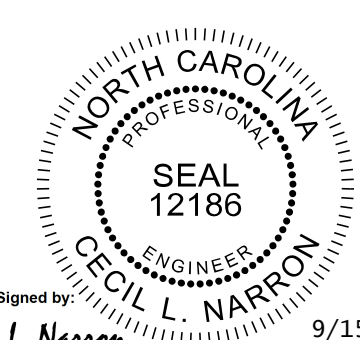


SECTION A-A

NOTES

- TYPICAL DECK, SIDEWALK, AND VERTICAL CONCRETE BARRIER RAIL REINFORCING NOT SHOWN FOR CLARITY.
- CONTRACTOR SHALL COORDINATE WITH THE CITY TO DETERMINE LIGHT POLE ANCHOR BOLT CONFIGURATION REQUIRED. SUBMIT LIGHT POLE SHOP DRAWINGS SHOWING ANCHOR BOLT CONFIGURATION AND LIGHT POLE DETAILS TO ENGINEER FOR APPROVAL.
- \* FOR "P" BARS IN LIGHT POLE BASE, SEE SUPERSTRUCTURE BILL OF MATERIALS.

PROJECT NO. U-3315  
PITT COUNTY  
 STATION: 65+56.61 -L-  
16+96.14 -Y10-  
 SHEET 1 OF 2



**Kimley»Horn**  
 333 Fayetteville Street, Suite 600  
 Raleigh, NC 27601-1772  
 Phone (919) 835-1494  
 NC LICENSE # F-0102

STATE OF NORTH CAROLINA DEPARTMENT OF TRANSPORTATION RALEIGH					
SUPERSTRUCTURE LIGHT POLE DETAILS					
REVISIONS					SHEET NO.
NO.	BY:	DATE:	NO.	BY:	DATE:
1			3		
2			4		
					S-21
					TOTAL SHEETS
					33

K:\BIDI-Structures\Bridges\NA\011036175-103315-10th.St.-Greenville.Cov\Vgn\S21.dgn 9/12/2014

DRAWN BY: <u>J. I. KIMBLE</u>	DATE: <u>9/14</u>
CHECKED BY: <u>J. C. WILSON</u>	DATE: <u>9/14</u>
DESIGN ENGINEER OF RECORD: <u>C.L. NARRON</u>	DATE: <u>9/14</u>