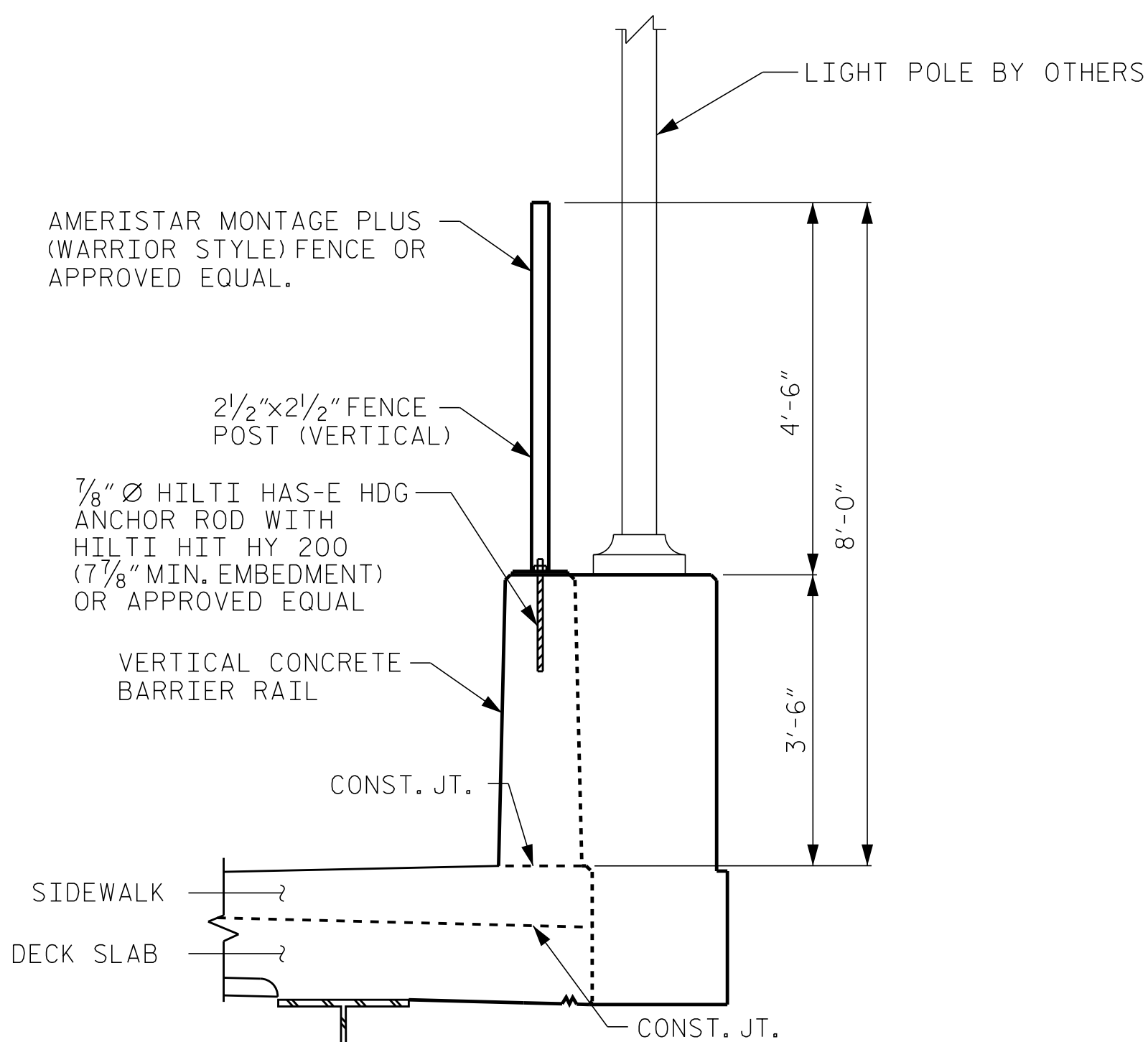
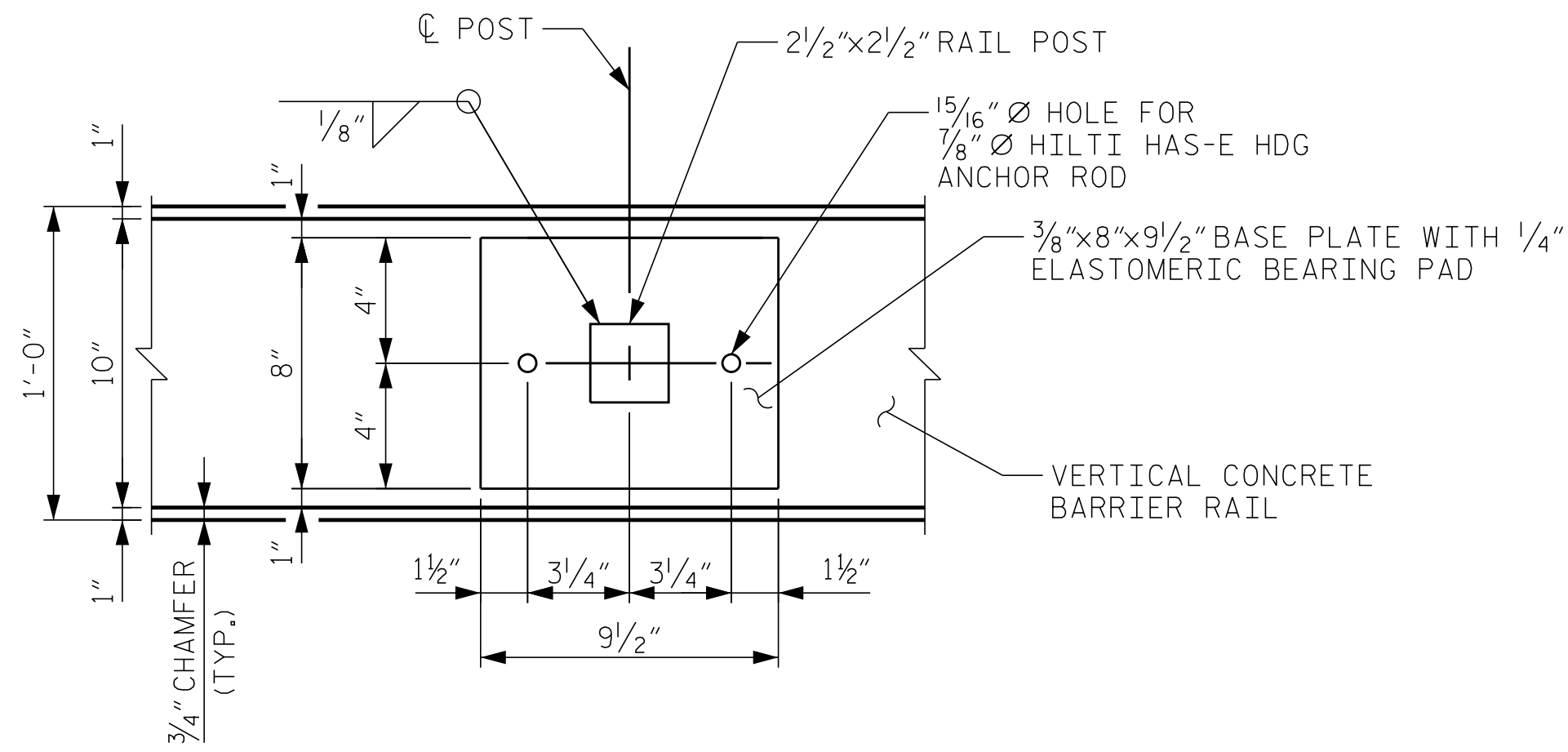


PARTIAL ELEVATION

PAY LENGTH = 356.7 LIN. FT.



SECTION THRU FENCE



BASE PLATE DETAIL

NOTES

- ORNAMENTAL STEEL FENCE SHALL BE AMERISTAR MONTAGE PLUS (WARRIOR STYLE) OR APPROVED EQUAL.
- ORNAMENTAL STEEL FENCE SHALL BE BLACK.
- ALL BOLTS SHALL BE HILTI 7/8" Ø HAS-E HDG ANCHOR ROD WITH HILTI HIT HY 200 (7/8" MIN. EMBEDMENT) OR APPROVED EQUAL.
- POST SHALL BE SPACED TO BE A MINIMUM OF 1'-6" FROM BARRIER RAIL EXPANSION JOINT.
- * GATE SHALL BE CENTERED ABOUT EACH LIGHT POLE. VERIFY POST SPACING WITH MANUFACTURER'S RECOMMENDATIONS.
- GATE SHALL BE LOCKABLE.
- FOR ORNAMENTAL FENCE DETAILS, SEE SPECIAL PROVISIONS.

K:\BIDI-Structures\Bridges\NC\01036175-03315-10th.St.-Greenville.Cov\Vgn\18.dgn 9/25/2014

PROJECT NO. U-3315
PITT COUNTY
 STATION: 65+56.61 -L-
16+96.14 -Y10-

Kimley»Horn
 333 Fayetteville Street, Suite 600
 Raleigh, NC 27601-1772
 Phone (919) 835-1494
 NC LICENSE # F-0102

STATE OF NORTH CAROLINA DEPARTMENT OF TRANSPORTATION RALEIGH					
SUPERSTRUCTURE ORNAMENTAL FENCE DETAILS					
REVISIONS					SHEET NO.
NO.	BY:	DATE:	NO.	BY:	DATE:
1			3		
2			4		
					S-18
					TOTAL SHEETS
					33

DRAWN BY: <u>J. I. KIMBLE</u>	DATE: <u>9/14</u>
CHECKED BY: <u>J. C. WILSON</u>	DATE: <u>9/14</u>
DESIGN ENGINEER OF RECORD: <u>C.L. NARRON</u>	DATE: <u>9/14</u>

This document, together with the concepts and designs presented herein, is an integral part of the contract. It is intended only for the specific project and site and shall not be used for any other project or site without the written authorization and approval of Kimley-Horn and Associates, Inc. No part of this document shall be reproduced or transmitted in any form or by any means, electronic or mechanical, including photocopying, recording, or by any information storage and retrieval system, without the prior written permission of Kimley-Horn and Associates, Inc.