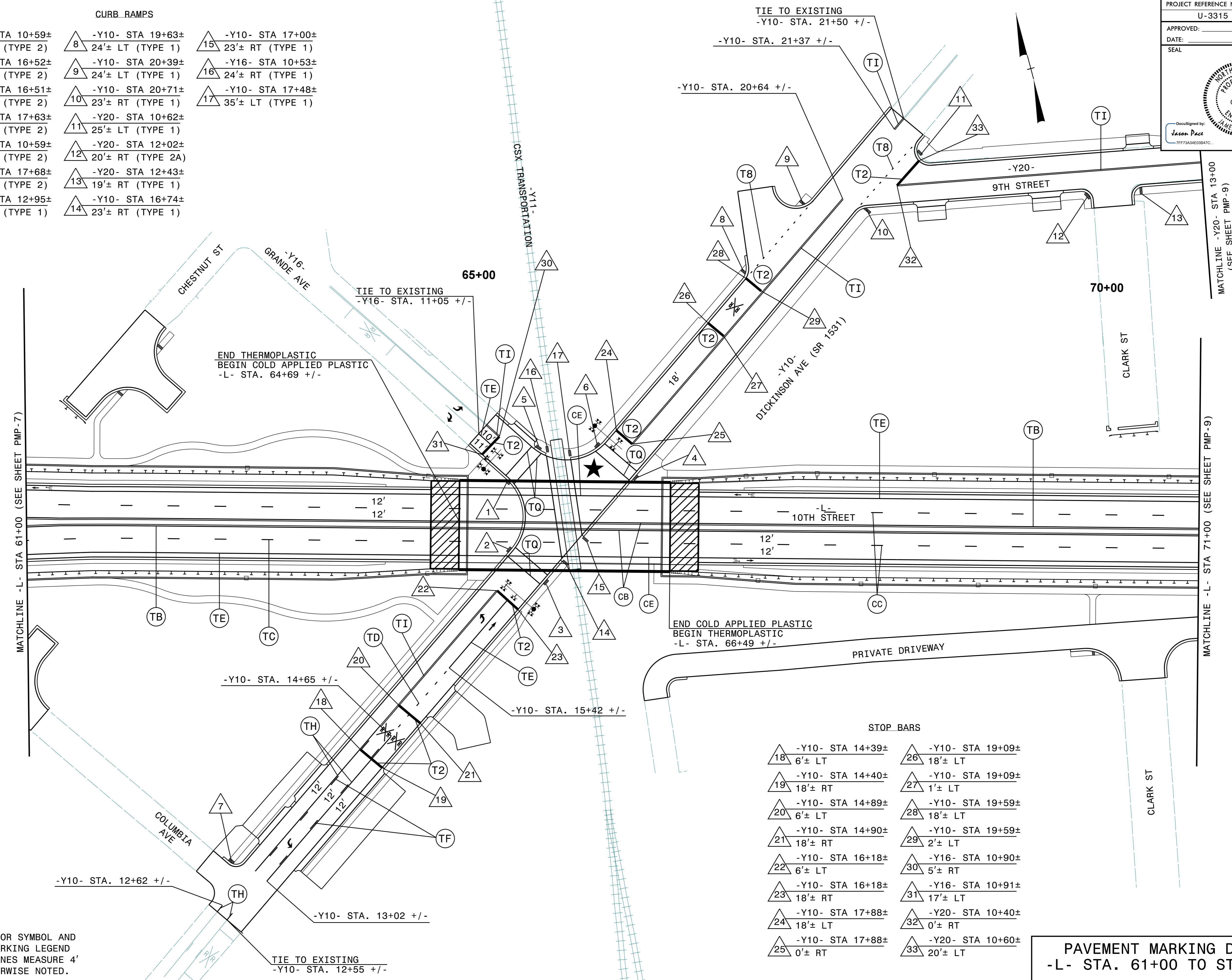


**CURB RAMPS**

|  |  |   |
|--|--|---|
| 1 -Y16- STA 10+59±<br>19'± LT (TYPE 2) | 8 -Y10- STA 19+63±<br>24'± LT (TYPE 1)   | 15 -Y10- STA 17+00±<br>23'± RT (TYPE 1) |
| 2 -Y10- STA 16+52±<br>20'± LT (TYPE 2) | 9 -Y10- STA 20+39±<br>24'± LT (TYPE 1)   | 16 -Y16- STA 10+53±<br>24'± RT (TYPE 1) |
| 3 -Y10- STA 16+51±<br>21'± RT (TYPE 2) | 10 -Y10- STA 20+71±<br>23'± RT (TYPE 1)  | 17 -Y10- STA 17+48±<br>35'± LT (TYPE 1) |
| 4 -Y10- STA 17+63±<br>21'± RT (TYPE 2) | 11 -Y20- STA 10+62±<br>25'± LT (TYPE 1)  |   |
| 5 -Y16- STA 10+59±<br>19'± RT (TYPE 2) | 12 -Y20- STA 12+02±<br>20'± RT (TYPE 2A) |   |
| 6 -Y10- STA 17+68±<br>22'± LT (TYPE 2) | 13 -Y20- STA 12+43±<br>19'± RT (TYPE 1)  |   |
| 7 -Y10- STA 12+95±<br>27'± LT (TYPE 1) | 14 -Y10- STA 16+74±<br>23'± RT (TYPE 1)  |   |



**STOP BARS**

|                                |                                |
|--------------------------------|--------------------------------|
| 18 -Y10- STA 14+39±<br>6'± LT  | 26 -Y10- STA 19+09±<br>18'± LT |
| 19 -Y10- STA 14+40±<br>18'± RT | 27 -Y10- STA 19+09±<br>1'± LT  |
| 20 -Y10- STA 14+89±<br>6'± LT  | 28 -Y10- STA 19+59±<br>18'± LT |
| 21 -Y10- STA 14+90±<br>18'± RT | 29 -Y10- STA 19+59±<br>2'± LT  |
| 22 -Y10- STA 16+18±<br>6'± LT  | 30 -Y16- STA 10+90±<br>5'± RT  |
| 23 -Y10- STA 16+18±<br>18'± RT | 31 -Y16- STA 10+91±<br>17'± LT |
| 24 -Y10- STA 17+88±<br>18'± LT | 32 -Y20- STA 10+40±<br>0'± RT  |
| 25 -Y10- STA 17+88±<br>0'± RT  | 33 -Y20- STA 10+60±<br>20'± LT |

**NOTES:**  
 1. SEE PMP-3 FOR SYMBOL AND PAVEMENT MARKING LEGEND  
 2. ALL BIKE LANES MEASURE 4' UNLESS OTHERWISE NOTED.

**PAVEMENT MARKING DETAIL**  
 -L- STA. 61+00 TO STA 71+00

K:\RAI\_Roadway\01036175\_U-3315\Traffic\Signing\CADD\Signing\_Layout\Plans\Proposed\U3315\_sgn\_pmp08.dgn 5/6/2015