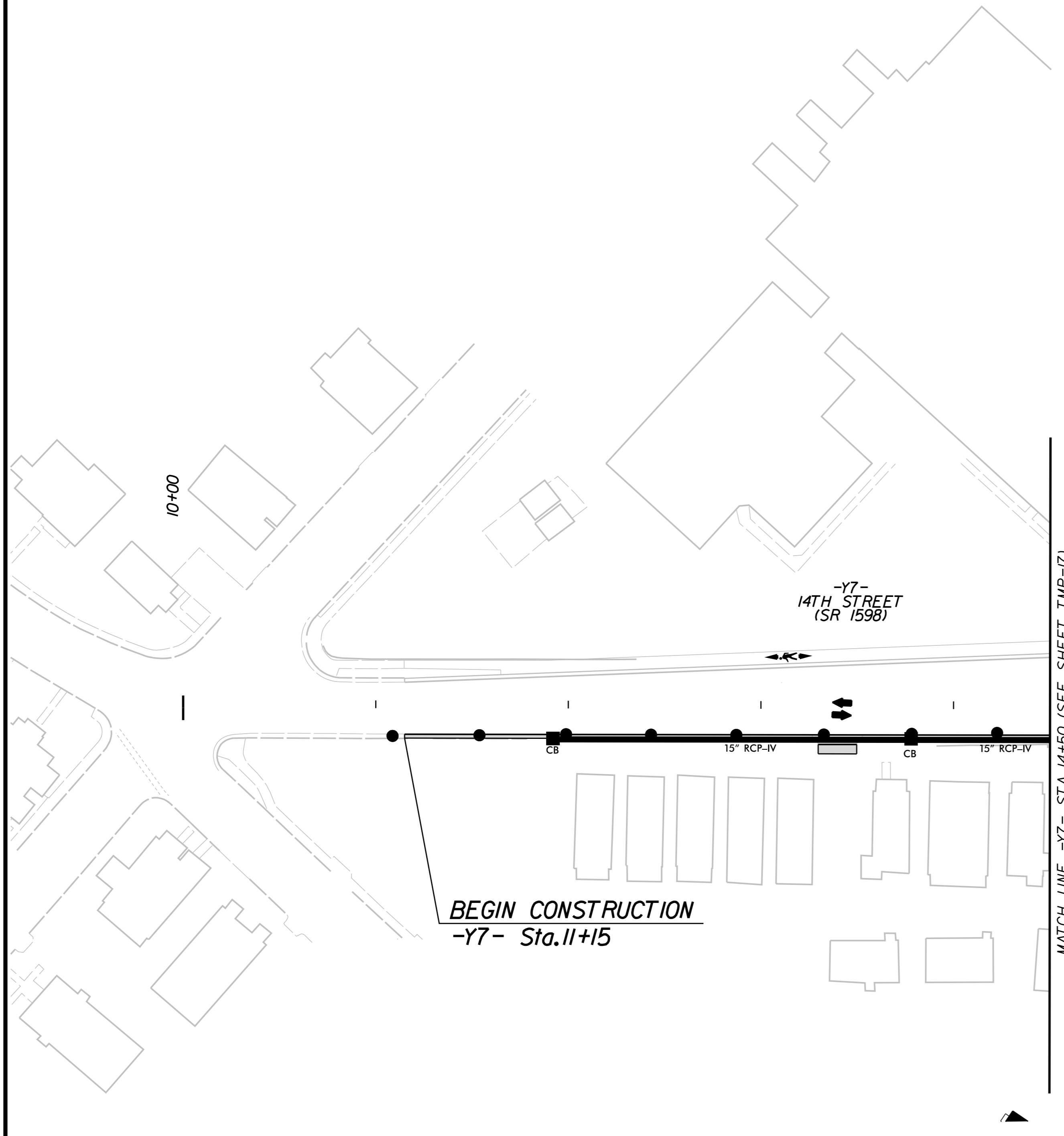


NAD 83/NSRS 2007

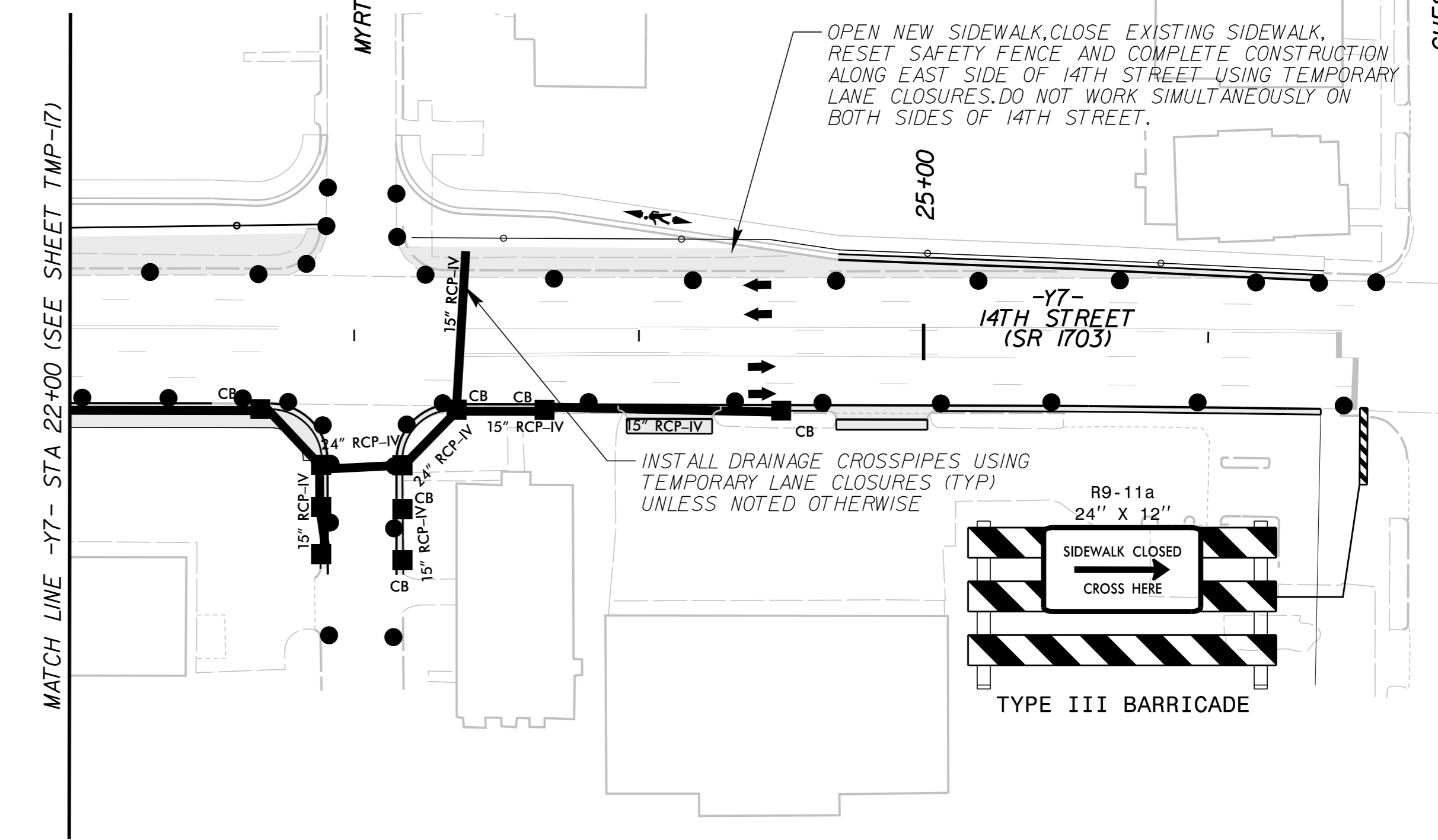
NAD 83/NSRS 2007

K:\RAL_Roadway\01036175_U-3315\TrafficControl\CP\Sheets\U3315_TMP_psf123.dgn
11/4/2014



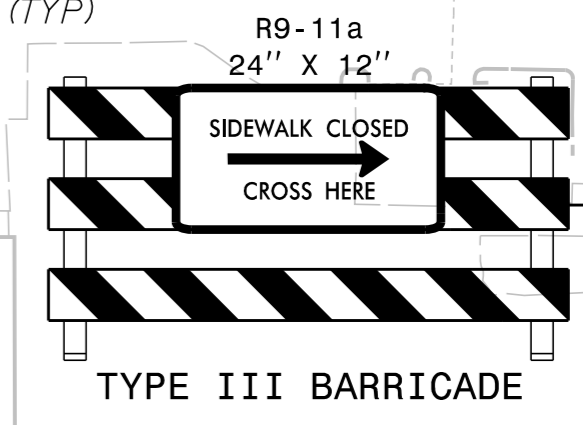
BEGIN CONSTRUCTION
-Y7- Sta. 11+15

MATCH LINE -Y7- STA 14+50 (SEE SHEET TMP-17)



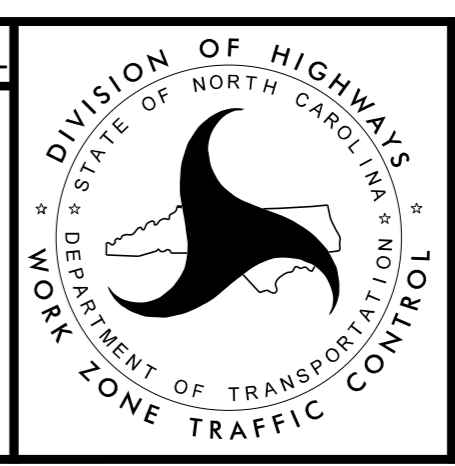
OPEN NEW SIDEWALK, CLOSE EXISTING SIDEWALK, RESET SAFETY FENCE AND COMPLETE CONSTRUCTION ALONG EAST SIDE OF 14TH STREET USING TEMPORARY LANE CLOSURES. DO NOT WORK SIMULTANEOUSLY ON BOTH SIDES OF 14TH STREET.

INSTALL DRAINAGE CROSSPIPES USING TEMPORARY LANE CLOSURES (TYP) UNLESS NOTED OTHERWISE



- WORK AREA
- PAVEMENT REMOVAL
- WEDGING

APPROVED: Jason Pace DATE: 11/9/2014



Kimley»Horn

TRAFFIC CONTROL PHASE 2