

NOTE:
 ONE TREATMENT SYSTEM FOOTPRINT WILL BE IN EACH NON-HAZARDOUS SOURCE ZONE AND ONE STORAGE TANK(S) FOOTPRINT WILL BE IN EACH HAZARDOUS SOURCE ZONE

s:\000aaatest\CAD\000_NEW-PLAN-ETC_JAN-2013.dgn

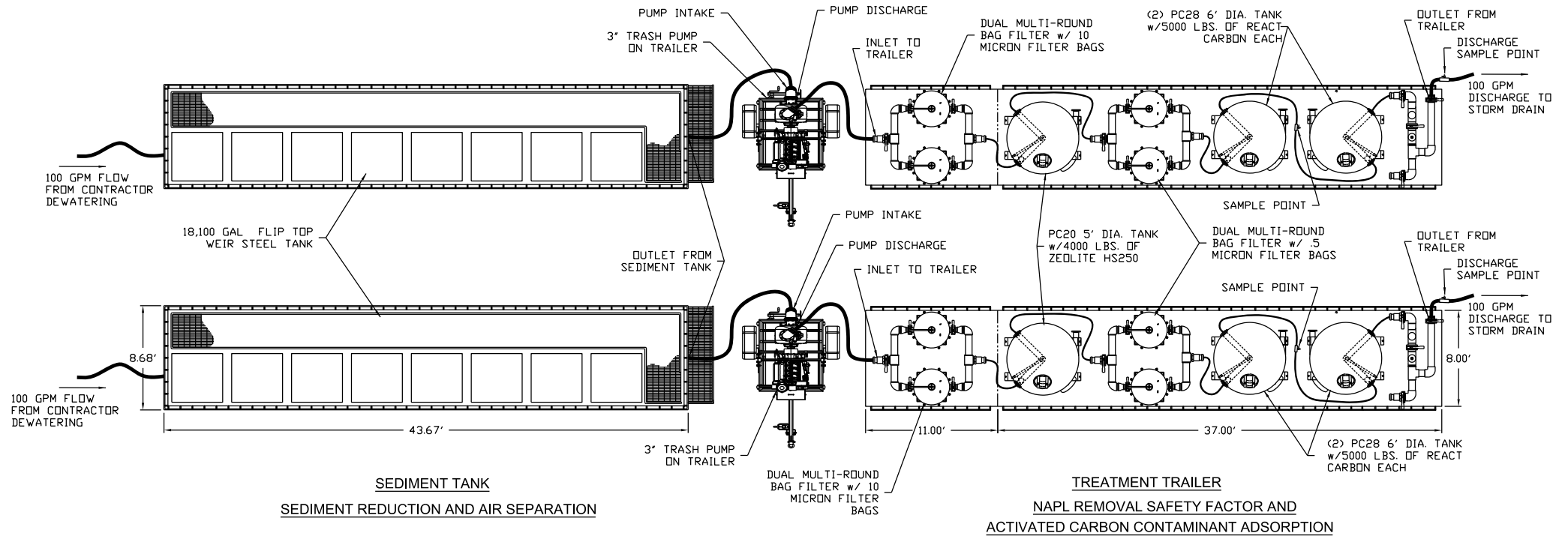
- NOTES:**
1. USGS TOPOGRAPHICAL QUADRANGLES PROVIDED BY TERRAIN NAVIGATOR PRO
 2. PROPOSED ALIGNMENTS PROVIDED BY NCDOT
 3. ALL OFFSET STATIONING APPROXIMATED +/- 10 FT.

CONTAMINANT CONCENTRATION TABLE

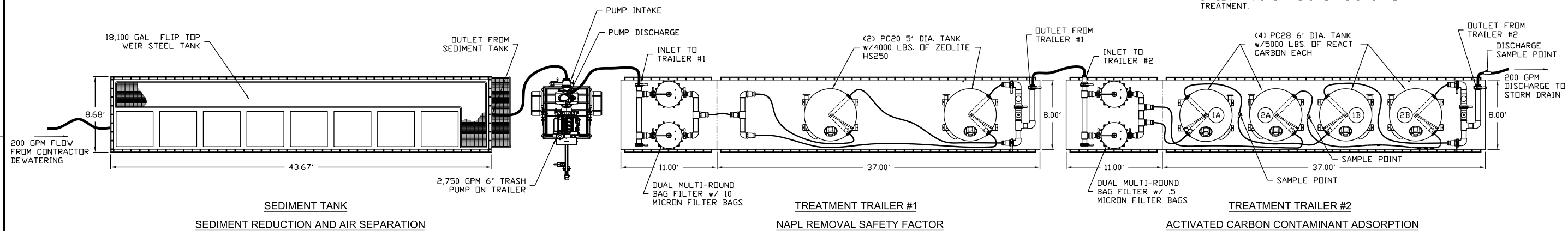
Flow rate: 200 gpm (max)
 Project duration: 6 months
 Water temperature: 55 °F (assumed)

Contaminant	Maximum Detected Conc. (ug/L)	Design Influent Conc. (a) (ug/L)	Effluent Criteria (b) (ug/L)
1,2,4-Trimethylbenzene	18,400 ^(c)	1,840	-
1,3,5-Trimethylbenzene	5,170	517	215
1-Methylnaphthene	51.4	5.14	2.6
2-Methylnaphthene	131	13.1	80
4-Isopropyltoluene	492	49.2	-
Anthracene	15.4	1.54	0.05
Benzene	2,330	233	51
Benzo(a)anthracene	49.6	4.96	0.0311 ^(c)
Benzo(a)pyrene	43.8	4.38	0.0311 ^(c)
Benzo(b)fluoranthene	54.9	5.49	0.0311 ^(c)
Benzo(g,h,i)perylene	24.4	2.44	-
Benzo(k)fluoranthene	24.2	2.42	0.0311 ^(c)
Bis(2-ethylhexyl)phthalate	11.7	1.17	2.2
Chrysene	47.5	4.75	0.0311 ^(c)
cis-1,2-Dichloroethene	71.3	7.13	-
Dibenzo(a,h)anthracene	8.55	0.855	0.0311 ^(c)
Dibenzofuran	8.12	0.812	-
Ethylbenzene	6,450	645	97
Indeno(1,2,3-cd)pyrene	24.3	2.43	0.0311 ^(c)
Isopropylbenzene	660	66	250
MTBE	26.6	2.66	1,500
Naphthalene	2,680	268	12
Phenanthrene	69.4	6.94	0.7
sec-Butylbenzene	15.2	1.52	-
Tetrachloroethene	196	19.6	3.3
Toluene	16,400 ^(d)	1,640	11
Trichloroethene	30.2	3.02	30
Xylenes	33,200 ^(d)	3,320	670

(a) Based on 10% of the maximum detected concentrations.
 (b) Based on the Surface Water Standards (Lower of FAF and HH).
 (c) Total PAHs including benzo(a)anthracene, benzo(a)pyrene, benzo(b)fluoranthene, benzo(k)fluoranthene, chrysene, dibenz(a,h)anthracene, and indeno(1,2,3-cd)pyrene.
 (d) Free phase product is likely to be present.
Bold values indicate the exceedance of the discharge limits.

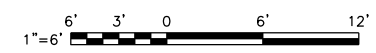


DUAL 100 GPM SCHEMATIC TREATMENT DIAGRAM OPTION



200 GPM SCHEMATIC TREATMENT DIAGRAM OPTION

NOTE: CARBON TREATMENT PROCESS: TANKS (1A) AND (1B) PARALLEL FLOW WITH TANKS (2A) AND (2B). SAMPLING POINTS BETWEEN (A) AND (B) TANKS TO DETERMINE WHEN TANKS (A) NEED REPLACED. CARBON TANKS (B) ARE SAFETY BACK-UP FOR TREATMENT.



NOT FOR CONSTRUCTION							
STATE PROJECT: U-3315 WBS ELEMENT: 35781.1.2	GROUNDWATER TREATMENT SYSTEM						
NCDOT STANTONSURG ROAD / TENTH STREET CONNECTOR FROM MEMORIAL DR. (US13) TO EVANS STREET GREENVILLE, N.C.							
SCALE: AS NOTED							
214092							
SHEET 2 OF 2							